

CORNER RECORD

Assessor's Parcel No. 020-271-07

City of Larkspur County of Marin California

Brief Legal Description: Lot 12 in Block G, 2 RM 90 Marin County Records

CORNER TYPE

**COORDINATES
(Optional)**

Lot in Existing Subdivision

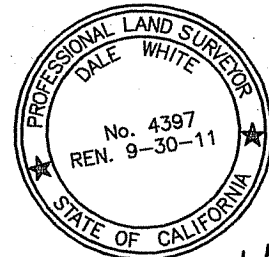
None

Corners - None Found. Reestablished corners based on monuments shown on 9 RS 30 and 35 RS 06. Set front corners. Set reference monuments to rear corners as shown on Page 2 of this Corner Record.

Description of Monuments reset: Monuments set in the front of this lot and the 5 foot offset monuments at the rear of the lot are three-quarter inch iron pipes and tags - LS 4397.

SURVEYOR'S STATEMENT

This Corner Record was prepared by me or under my direction in conformance with the Land Surveyor's Act on June 15, 2010.



Signed Dale White LS 4397

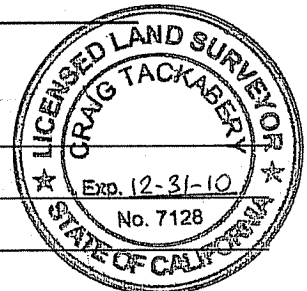
7-21-10

COUNTY SURVEYOR'S STATEMENT

This Corner Record was received JUNE 21, 20 10, and examined and filed AUGUST 3, 20 10.

Signed [Signature] Title COUNTY SURVEYOR

County Surveyor's Comments _____

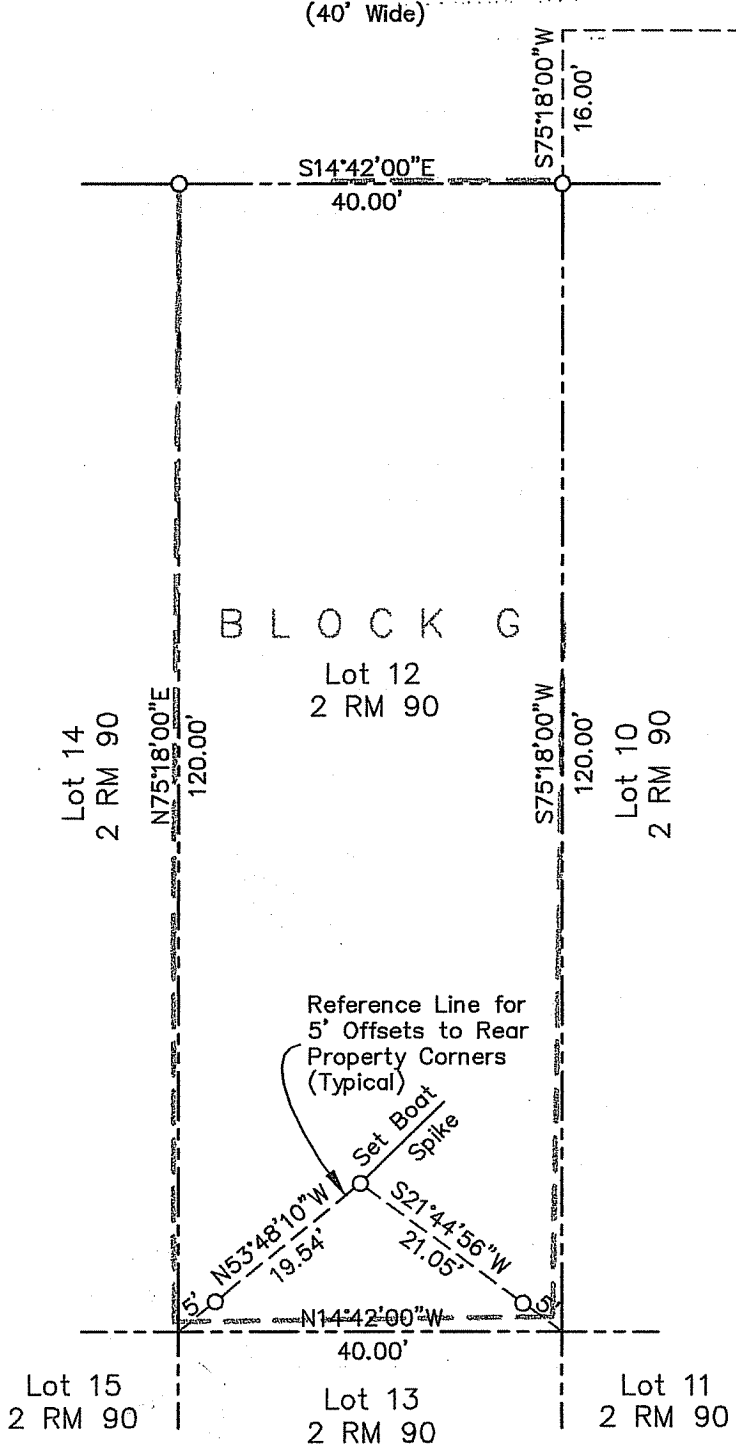




Scale: 1" = 20'

Holcomb Avenue

(40' Wide)



N14°42'00"W
636.00'

Fd. Street Mon.
Per 9 RS 30

Basis of Bearings

N75°18'00"E
312.16' Meas.

Baltimore Avenue

Fd. Street Mon.
In Sidewalk
Per 9 RS 30

Legend

- Property Line
- Existing Fence
- Set 3/4" Iron Pipe And Tag LS 4397 Unless Otherwise Noted

Property Corner Survey

Lot 12, 2 RM 90
Marin County Records

427 Holcomb Avenue
Larkspur, CA
APN 020-271-07

Corner Record
Page 2 of 2