

CORNER RECORD

Agency Index

CR22-003

Document Number

020-243-06

City of Larkspur

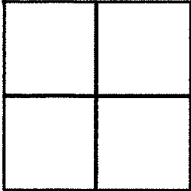
County of

MARIN

, California

Brief Legal Description

Lot 15, Block 10, 3 RM 83 "Amended Map of the Town of Larkspur"



CORNER TYPE

Government Corner Control
Meander Property
Rancho Other

Date of Survey 11/24/2021

COORDINATES (Optional)

N. _____ E. _____
Elevation _____
Units Metric U.S. Survey Foot
Horizontal Datum _____
Zone _____ Epoch Date _____
Vertical Datum _____

Complies with Public Resources Code §§8801-8819
 Complies with Public Resources Code §§8890-8902

PLS Act Ref: 8765(d) 8771 8773 Other:

Corner/Monument: Left as found Established Rebuilt Pre-Construction
 Found and tagged Reestablished Referenced Post-Construction

Narrative of corner identified and monument as found, set, reset, replaced, or removed:

See sheet #2 for description (s):

SURVEYOR'S STATEMENT

This Corner Record was prepared by me or under my direction in conformance with the Professional Land Surveyors' Act on December 21, 2021

Signed [Signature] P.L.S. or R.C.E. No. 6649



COUNTY SURVEYOR'S STATEMENT

This Corner Record was received DECEMBER 27, 2021
and examined and filed JANUARY 26, 2022

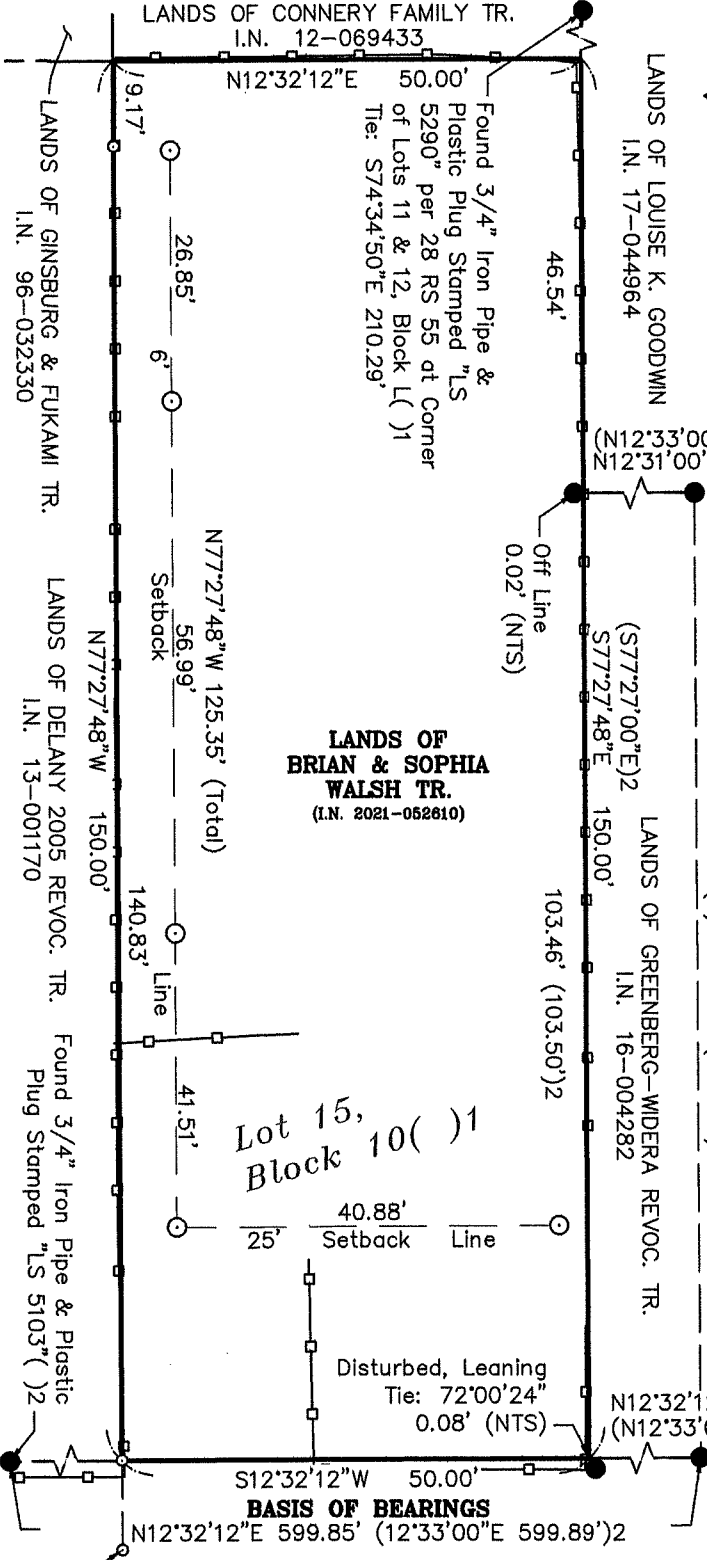
Signed [Signature] P.L.S. ~~NO.~~ No. 8176

Title COUNTY SURVEYOR

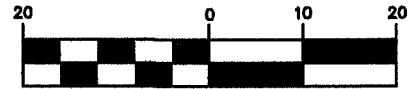


County Surveyor's Comment _____

All distances shown are in feet and decimals thereof



GRAPHIC SCALE



(IN FEET)

LEGEND

- Found 5/8" Rebar & Plastic Cap, Stamped "LS 8708"()2 (UNO)
- Set Nail & 3/4" Brass Tag in Top Fence Runner, Stamped "LS 6649" (UNO)
- ⊙ Set 8" Mag Hub & 1-1/2" Brass Washer, Stamped "L.A. Stevens, LS 6649"

UNO Unless Noted Otherwise

⚡ / NTS Not To Scale

— □ Wood Fence

()1 3 RM 83

()2 2013 M 31

WARD ST.
(60' R / W) 2



Lawrence A. Stevens, PLS 6649

CORNER RECORD

LANDS OF BRIAN & SOPHIA WALSH TR. (Lot 15, Block 10, 3 RM 83)

CITY OF LARKSPUR

MARIN COUNTY

CALIFORNIA

SCALE: 1" = 20'

DECEMBER, 2021

L.A. Stevens & Associates, Inc.

Professional Land Surveyors * (415) 382-7713
7 Commercial Blvd., Suite 1 * Novato, CA 94949

Job # 212170

LOCUST AVE.
(60' R / W) 2