

L. A. Stevens & Associates, Inc.
Professional Land Surveyors
Novato, California

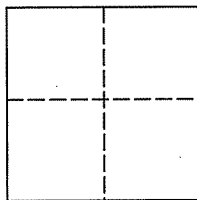
Lands of Miller
Job #: 02-614

CORNER RECORD

Document Number 020-241-33

City of Larkspur, County of Marin, California

Brief Legal Description: The Southerly line of the Lands of Miller as shown on that certain Record of Survey recorded in Book 2005 of Maps at page 59.



CORNER TYPE

Government Corner Control
Meander Property
Rancho Other
Date of Survey November 3, 2006

COORDINATES (Optional)

N _____
E _____
Zone _____ NAD27 NAD83
NAD 83 Epoch _____
Elev. _____
Vert. Datum: NGVD29 NAVD88
Meas. Units: Metric Imperial

Corner - Left as found Found and tagged Established Reestablished Rebuilt

Identification and type of corner found: Evidence used to identify or procedure used to establish or reestablish the corner:

See Page 2 of 2

A description of the physical condition of the monument as found and as set or reset:

See Page 2 of 2

SURVEYOR'S STATEMENT

This Corner Record was prepared by me or under my direction in conformance with
The Land Surveyor's Act on December 15, 2006

Signed [Signature] P.L.S. 6649



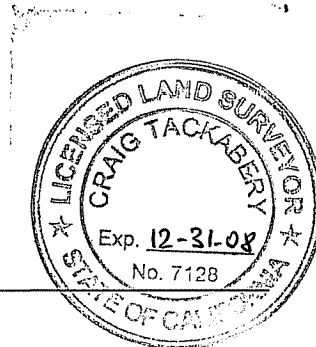
COUNTY SURVEYOR'S STATEMENT

This Corner Record was received DECEMBER 18, 2006
and examined and filed JANUARY 16, 2007

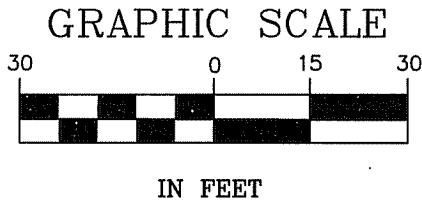
Signed [Signature] P.L.S. or P.C.E. No. 7128

Title COUNTY SURVEYOR

County Surveyors' Comment _____



All distances shown are in feet and decimals thereof

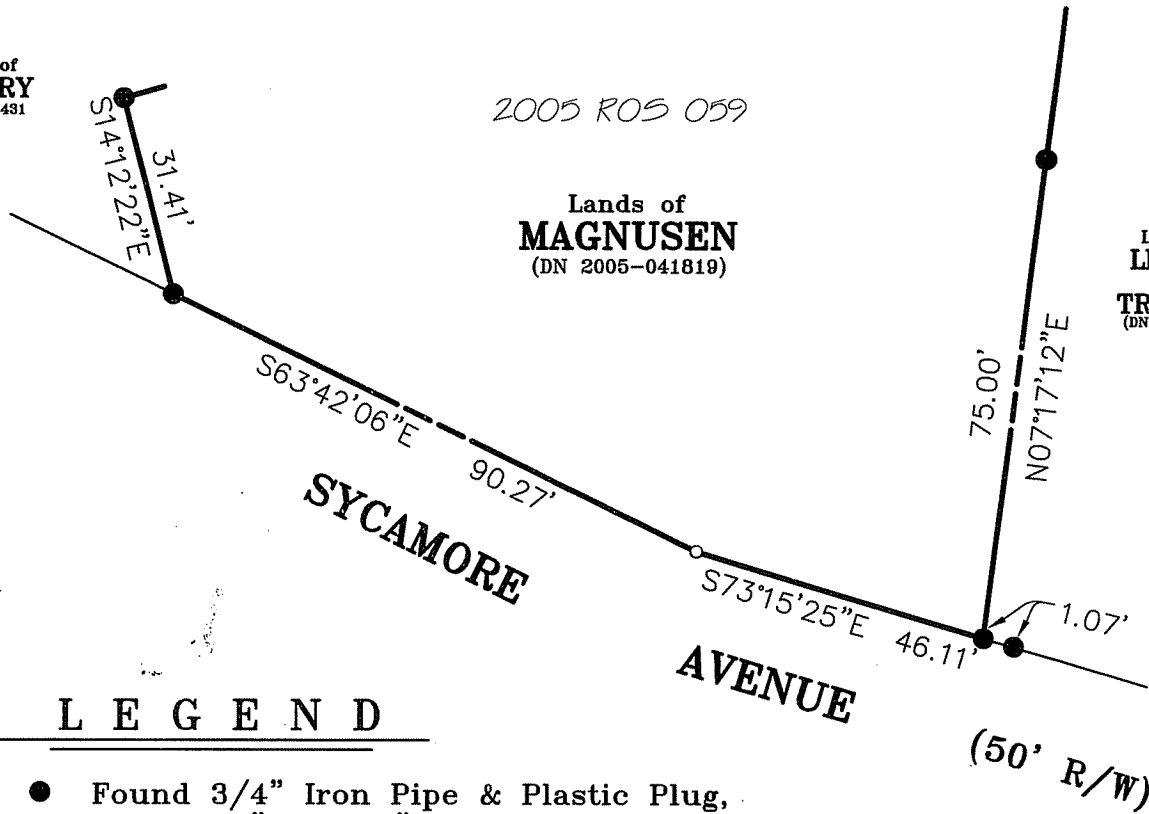


Lands of
O'LEARY
2354 OR 431

2005 ROS 059

Lands of
MAGNUSEN
(DN 2005-041819)

Lands of
**LIPPITT
&
TRIBOLET**
(DN 93-020236)



LEGEND

- Found 3/4" Iron Pipe & Plastic Plug, Stamped "LS 6649" Per 2005 ROS 059
- Set Mag Nail & Brass Washer, Stamped "LS 6649"



**Plat of Survey
Lands of Magnusen**

(Lands of Miller, 2005 ROS 059)

Larkspur Marin County California
Scale: 1" = 30' December 2006

L.A. Stevens & Associates, Inc.

Professional Land Surveyors * (415) 382-7713
7 Commercial Blvd., Suite 1 * Novato, CA 94949

Job # 02-614

Page 2 Of 2

Lawrence A. Stevens, PLS 6649
my license expires 12/31/07