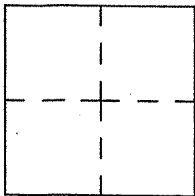


# CORNER RECORD

Document number A.P.N. 020-132-32/33

City of LARKSPUR County of MARIN, California

Brief Legal Description PARCEL 2 AS SHOWN UPON 11 P.M. 88  
MARIN COUNTY RECORDS



### CORNER TYPE

Government Corner  Control   
Meander  Property   
Rancho  Other   
Date of Survey \_\_\_\_\_

### COORDINATES

N. \_\_\_\_\_  
E. \_\_\_\_\_  
Zone \_\_\_\_\_ Datum \_\_\_\_\_  
Elev. \_\_\_\_\_

Corner-- Left as found  found and tagged  Established  Reestablished  Rebuilt

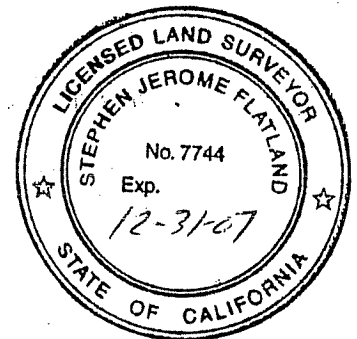
Identification and type of corner found: Evidence used to identify or procedure used to establish or reestablish the corner:  
UTILIZED MONUMENTS AS SHOWN UPON 11 P.M. 88 AS A BASIS OF  
BEARINGS TO MONUMENT PROPERTY CORNERS AND LINE POINTS OF PARCEL 21 AS SHOWN  
UPON ATTACHED DRAWING.

A description of the physical condition of the monument as found and as set or reset.  
FOUND 1/2" IRON PIPE MONUMENT AT THE NORTHWEST CORNER OF SAID PARCEL 2, AND  
FOUND 3/4" IRON PIPE WITH TAG, R.C.E. 12,510 AT THE SOUTHWEST CORNER OF SAID  
PARCEL 2, PER 11 P.M. 88

### SURVEYOR'S STATEMENT

This Corner Record was prepared by me or under my direction in conformance with  
the Professional Land Surveyor's Act on March 14 2006.

Signed *Stephen Jerome Flatland* L.S. Number 7744



### COUNTY SURVEYOR'S STATEMENT

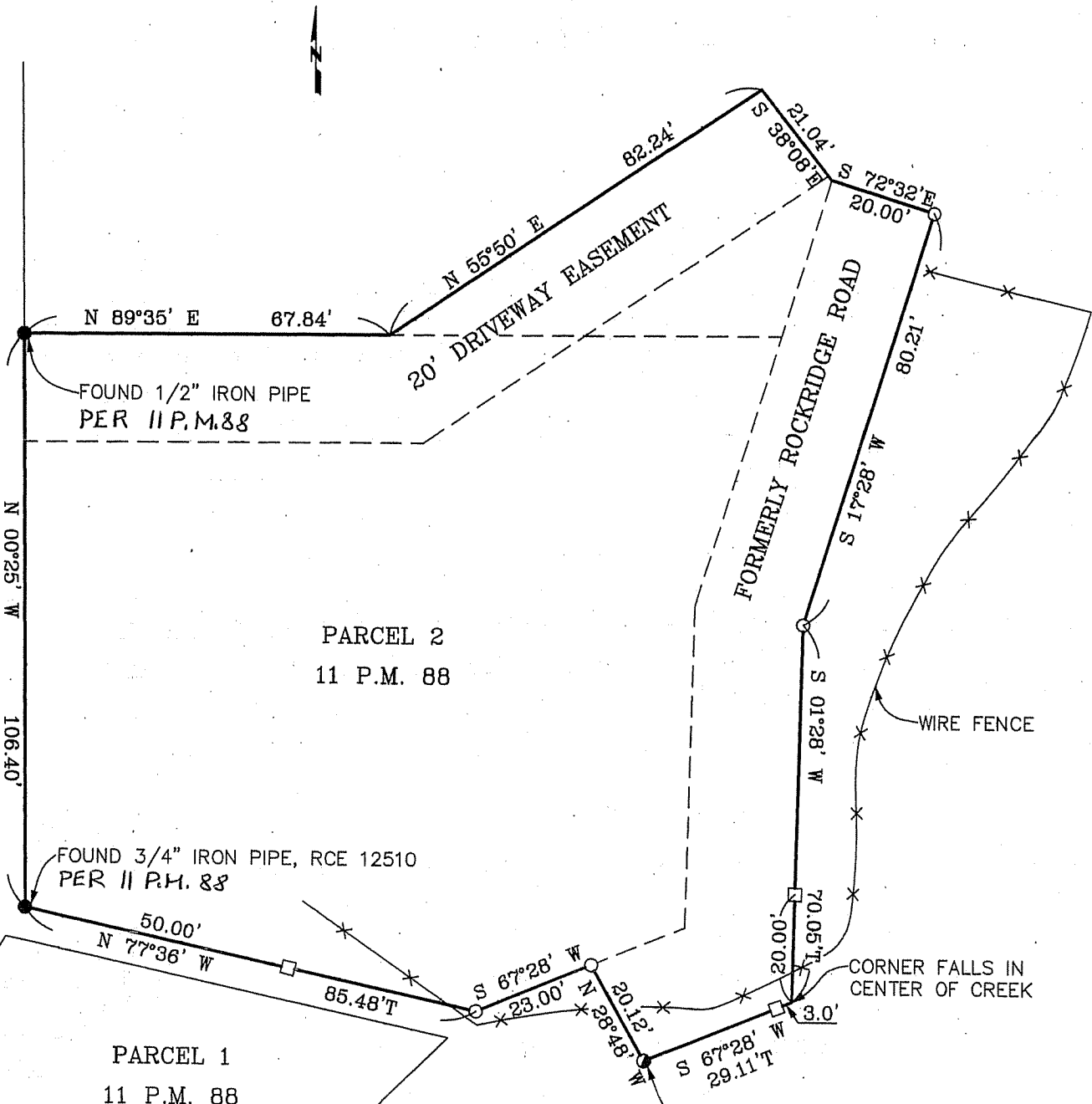
This Corner Record was received MARCH 14, 2006 and examined  
and filed APRIL 12, 2006

Signed \_\_\_\_\_ Title COUNTY SURVEYOR



County Surveyor's Comment \_\_\_\_\_  
\_\_\_\_\_  
\_\_\_\_\_

MURRAY AVENUE (50' R/W)



N 89°35' E 67.84'  
 FOUND 1/2" IRON PIPE  
 PER 11 P.M. 88

N 55°50' E 82.24'  
 20' DRIVEWAY EASEMENT

PARCEL 2  
 11 P.M. 88

N 00°25' W 106.40'

FOUND 3/4" IRON PIPE, RCE 12510  
 PER 11 P.M. 88

FORMERLY ROCKRIDGE ROAD

WIRE FENCE

PARCEL 1  
 11 P.M. 88

CORNER FALLS IN  
 CENTER OF CREEK

SET NAIL & BRASS TAG  
 PLS 7744, IN 4" ROOT



- FOUND IRON PIPE AS SHOWN
- SET 1/2" REBAR & CAP, P.L.S. 7744
- SET HUB & TACK
- SET NAIL & BRASS TAG,  
P.L.S. 7744 AS SHOWN