

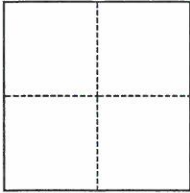
CORNER RECORD

Agency Index 21-106
Document Number APN 020-113-27

City of LARKSPUR County of MARIN, California
Brief Legal Description CL MON AT INTERSECTION OF HARVARD DR & TULANE DR, 8 RM 55

CORNER TYPE

COORDINATES (Optional)



- Government Corner
- Meander
- Rancho
- Control
- Property
- Other

N. _____ E. _____
 Elevation _____
 Units Metric U.S. Survey Foot
 Horizontal Datum _____
 Zone _____ Epoch Date _____
 Vertical Datum _____
 Complies with Public Resources Code §§8801-8819
 Complies with Public Resources Code §§8890-8902

Date of Survey September 20, 2021

- PLS Act Ref.: 8765(d) 8771 8773 Other:
- Corner/Monument: Left as found Established Rebuilt Pre-Construction
 Found and tagged Reestablished Referenced Post-Construction

Narrative of corner identified and monument as found, set, reset, replaced, or removed:

See sheet #2 for description(s):

FOUND WELL MONUMENT WITH IRON PIN AT THE CENTERLINE INTERSECTION OF HARVARD DR AND TULANE DR (A COPPER DISK STAMPED R.E. 3230 SET IN CONCRETE IS SHOWN AT THIS LOCATION ON THAT MAP OF HILLTOP GARDENS, BOOK 8 OF RM AT PAGE 55, MCR). SET FOUR MAG NAILS AND STEEL WASHERS STAMPED PLS 8614 AT REFERENCE POINTS (SEE PLAT). THE PURPOSE OF SETTING REFERENCE NAILS AND WASHERS IS TO PRESERVE THE RECORD LOCATION OF FOUND MONUMENT DURING ROADWAY CONSTRUCTION.

SURVEYOR'S STATEMENT

This Corner Record was prepared by me or under my direction in conformance with
 the Professional Land Surveyors' Act on Oct. 16, 2021
 Signed *Anthony G. Cinquini* P.L.S. or R.C.E. No. 8614

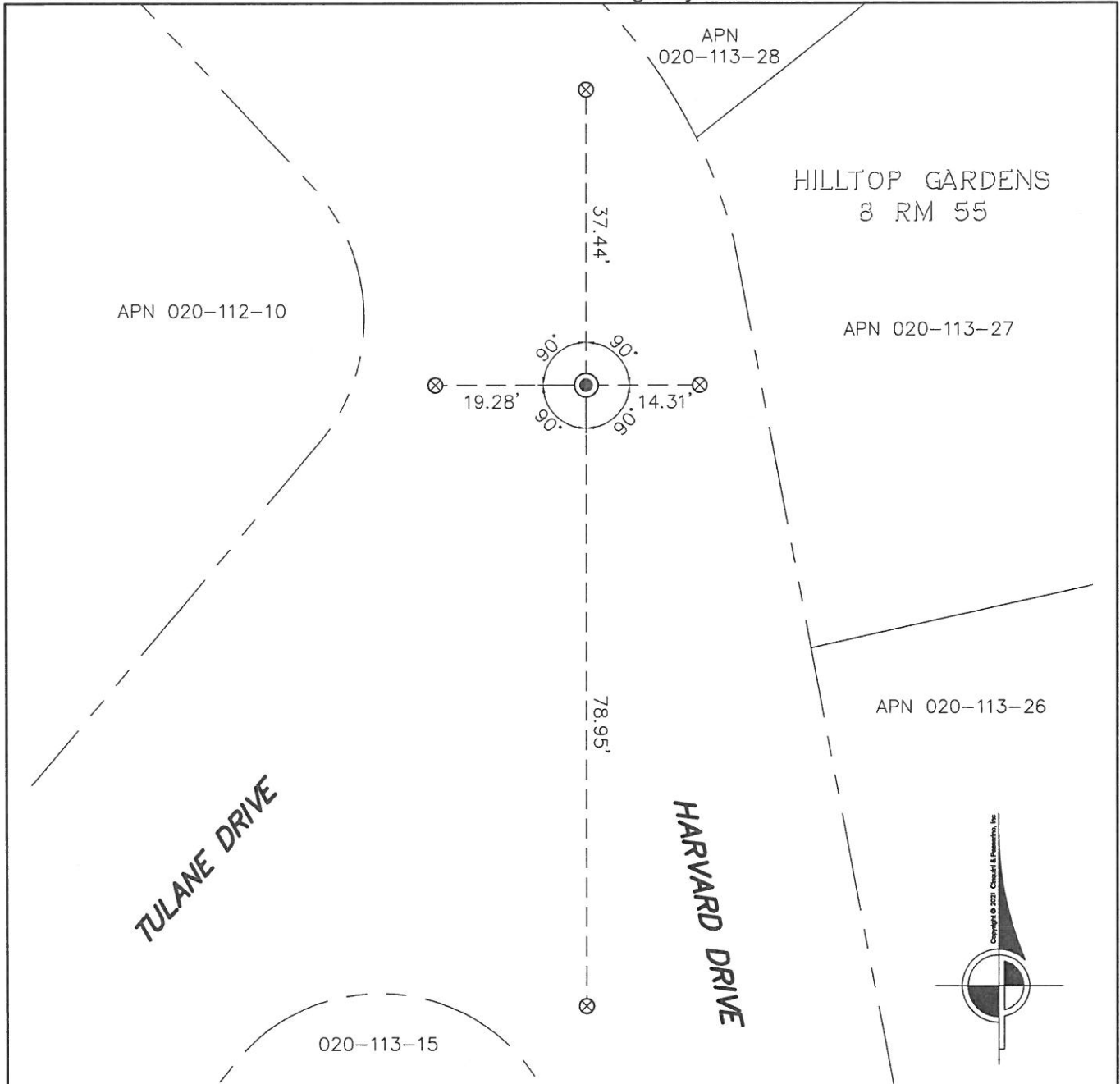


COUNTY SURVEYOR'S STATEMENT

This Corner Record was received 10/17/2021
 and examined and filed 02/02/2022
 Signed *John R. Semerad* P.L.S. or R.C.E. No. 9292
 Title Deputy



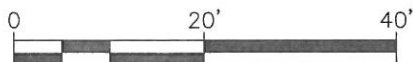
County Surveyor's Comment



LEGEND

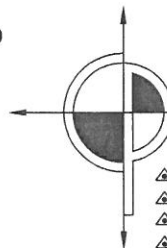
- — — — — RIGHT OF WAY
- ADJACENT PROPERTY BOUNDARY
- - - - - SURVEY TIE

- ⊙ FOUND WELL MONUMENT WITH IRON PIN (COPPER DISK R.E.3230 IN CONCRETE SHOWN ON R1)
- ⊗ SET NAIL & STEEL WASHER STAMPED CINQUINI & PASSARINO PLS 8614
- R1 MAP OF HILLTOP GARDENS 8 RM 55, MARIN COUNTY RECORDS



NOTES

ALL DISTANCES AND DIMENSIONS ARE IN FEET AND DECIMALS THEREOF.
 ALL TIES ARE AT RIGHT ANGLES UNLESS OTHERWISE NOTED.
 ALL LINES ARE STRAIGHT-LINE TIES UNLESS OTHERWISE NOTED.



CINQUINI & PASSARINO, INC.
LAND SURVEYING

▲ BOUNDARY
 ▲ TOPOGRAPHIC
 ▲ CONSTRUCTION
 ▲ SUBDIVISIONS

1360 No. Dutton Ave.
 Santa Rosa, Ca. 95401
 Phone: (707) 542-6268
 Fax: (707) 542-2106
 WWW.CINQUINIPASSARINO.COM