

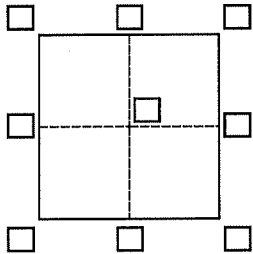
# CORNER RECORD

Agency Index 21-151

Document Number AP#020-113-18

City of Larkspur County of Marin, California

Brief Legal Description Lot 18, 8 RM 55



### CORNER TYPE

- Government Corner  Control
- Meander  Property
- Rancho  Other

Date of Survey August 18, 2021

### COORDINATES (Optional)

N. \_\_\_\_\_ E. \_\_\_\_\_

Elevation \_\_\_\_\_

Units Metric  U.S. Survey Foot

Horizontal Datum \_\_\_\_\_

Zone \_\_\_\_\_ Epoch Date \_\_\_\_\_

Vertical Datum \_\_\_\_\_

Complies with Public Resources Code §§8801-8819

Complies with Public Resources Code §§8890-8902

PLS Act Ref.:  8765(d)  8771  8773  Other:

Corner/Monument:  Left as found  Established  Rebuilt  Pre-Construction

Found and tagged  Reestablished  Referenced  Post-Construction

Narrative of corner identified and monument as found, set, reset, replaced, or removed:

See sheet #2 for description(s):

### SURVEYOR'S STATEMENT

This Corner Record was prepared by me or under my direction in conformance with

the Professional Land Surveyors' Act on August 18, 2021

Signed [Signature] P.L.S. or R.C.E. No. RCE 30465



### COUNTY SURVEYOR'S STATEMENT

This Corner Record was received 8.31.21

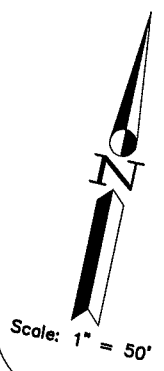
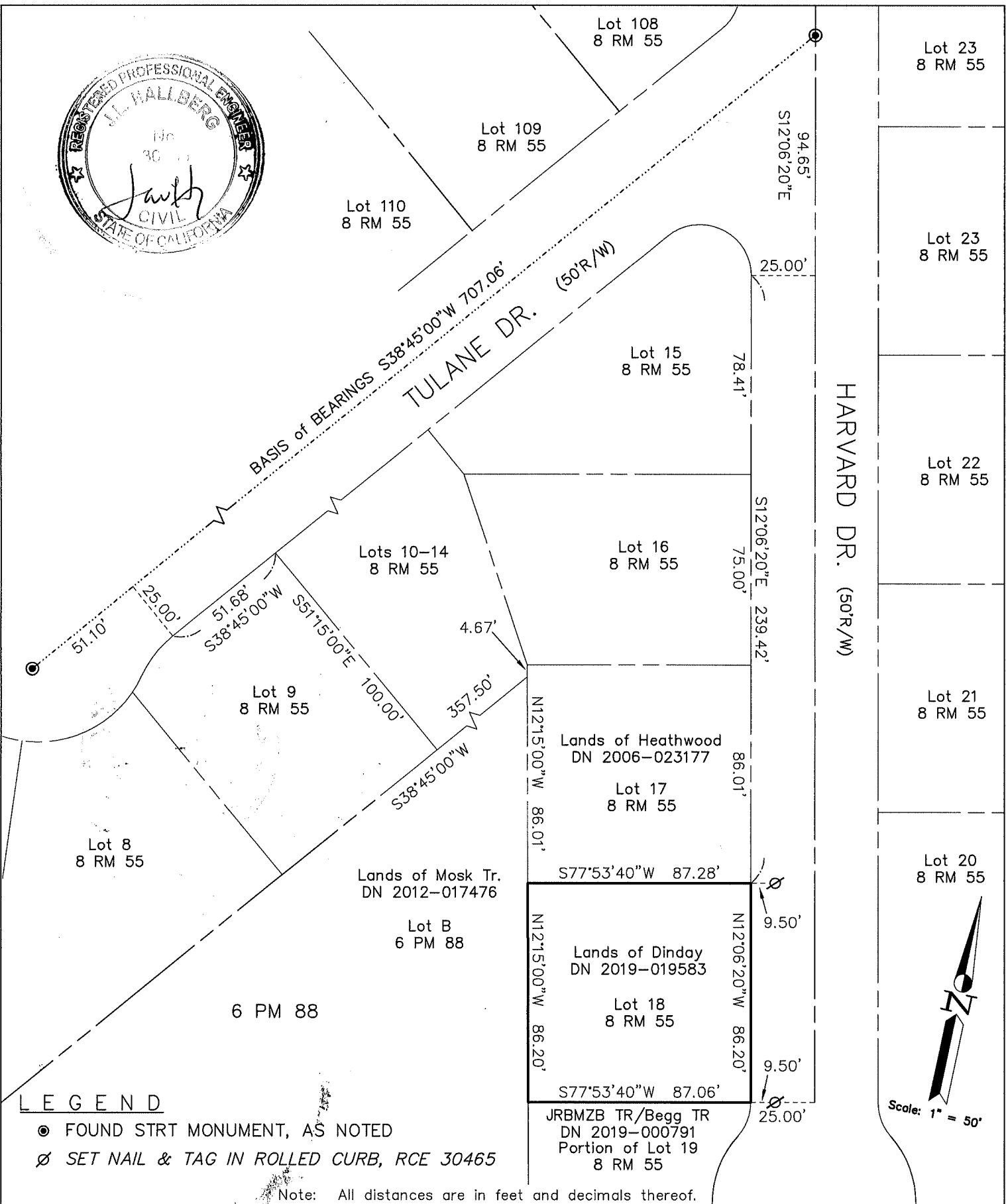
and examined and filed 1.31.22

Signed [Signature] P.L.S. or R.C.E. No. 9292

Title DEPUTY

County Surveyor's Comment





**LEGEND**

- FOUND STRT MONUMENT, AS NOTED
- ∅ SET NAIL & TAG IN ROLLED CURB, RCE 30465

Note: All distances are in feet and decimals thereof.

SHEET	1	OF	1
SCALE:	1" = 50'	DESIGN:	EDL
DATE:	Aug 2021	DRAWN:	EDL
FILE:	2021-056	CHECKED:	J.L.H

**J.L. ENGINEERING**  
 CIVIL ENGINEERS-LAND SURVEYORS  
 1539 4th ST., SAN RAFAEL, CA. 94901 (415) 457-6647

**Corner Record**

Lands of Dinday - 15 Harvard Dr.  
 APN 020-113-18, Larkspur, Marin County, CA