

CORNER RECORD

A.P. # 20-112-18

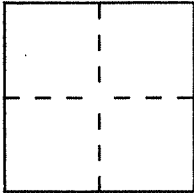
Document Number 8-Maps 55

City of Larkspur

County of Marin, California

Brief Legal Description Tulane Drive, Lot 116

8RM55



CORNER TYPE

**COORDINATES
(Optional)**

Government Corner Control
Meander Property
Rancho Other
Date of Survey 12 November 1997

N. _____
E. _____
Zone _____ Datum _____
Elev. _____

Corner — Left as found Found and tagged Established Reestablished Rebuilt

Identification and type of corner found: Evidence used to identify or procedure used to establish or reestablish the corner:

Found standard well monuments with brass pin per 8RM55, set nail and brass tag stamped "PLS 7053" as shown on sheet 2.

A description of the physical condition of the monument as found and as set or reset:

Set nail and brass tag stamped "PLS 7053" in fence runner.
Set nail and brass tag stamped "PLS 7053" in concrete sidewalk at 5' offset to property line.

SURVEYOR'S STATEMENT

This Corner Record was prepared by me or under my direction in conformance with the Land Surveyors' Act on 17 November 1997.

Signed Linda A. Carruthers L.S. or R.C.E. Number 7053



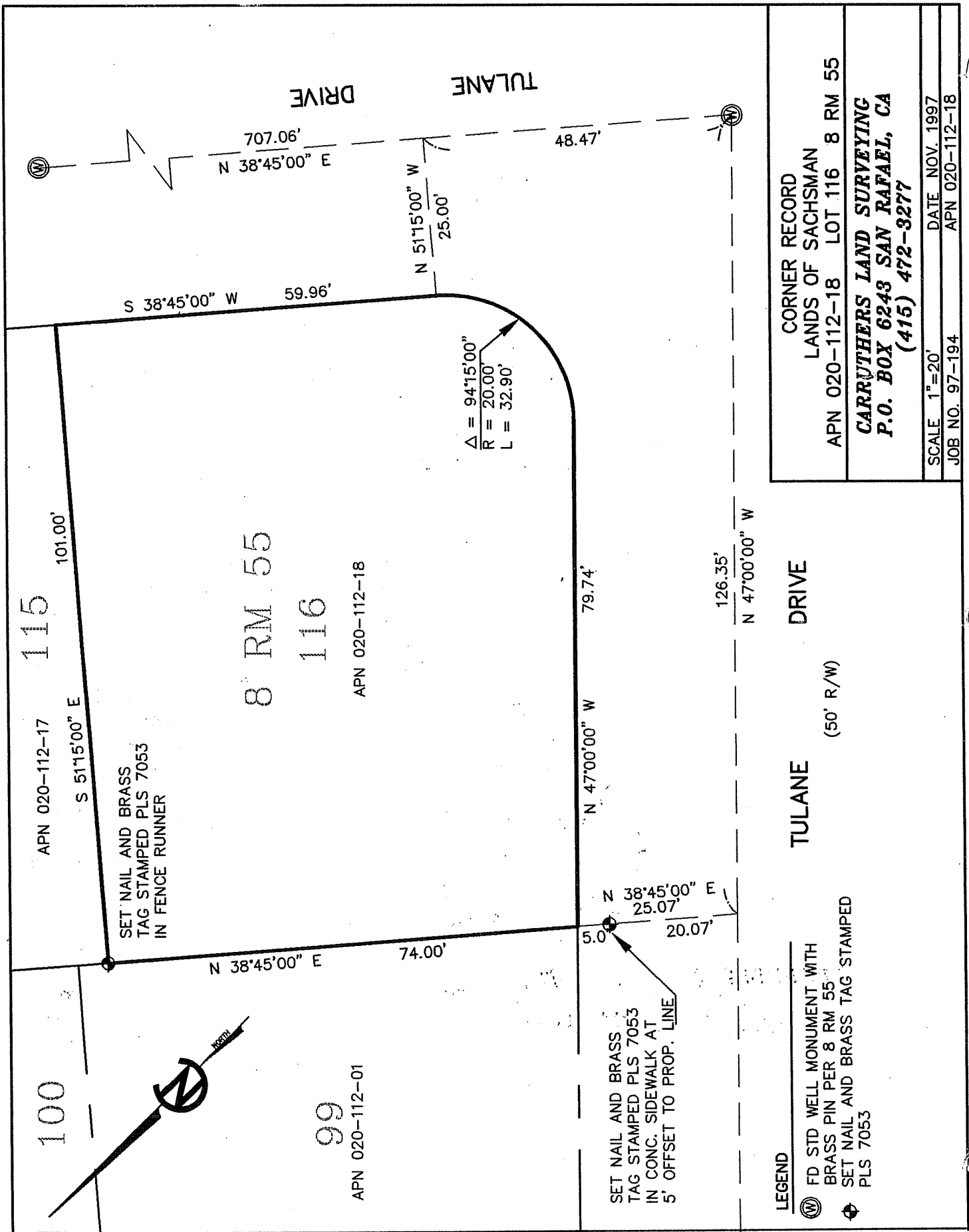
COUNTY SURVEYOR'S STATEMENT

This Corner Record was received November 25 1997 and examined and filed DECEMBER 2 1997.

Signed John M. Woolley Title Deputy



County Surveyor's Comment _____



CORNER RECORD
 LANDS OF SACHSMAN
 APN 020-112-18 LOT 116 8 RM 55
 CARRUTHERS LAND SURVEYING
 P.O. BOX 6243 SAN RAFAEL, CA
 (415) 472-3277

SCALE 1"=20'
 DATE NOV. 1997
 JOB NO. 97-194
 APN 020-112-18