

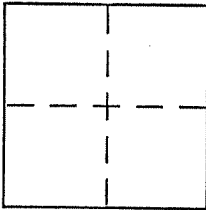
CORNER RECORD

Document Number A.P. # 020-101-07

City of LARKSPUR

County of MARIN, California

Brief Legal Description LOT 47 ~ 8 RM 55



CORNER TYPE

Government Corner  Control   
Meander  Property   
Rancho  Other   
Date of Survey 5-24-02

COORDINATES (Optional)

N. \_\_\_\_\_  
E. \_\_\_\_\_  
Zone \_\_\_\_\_ NAD27  NAD83   
NAD83 Epoch \_\_\_\_\_  
Elev. \_\_\_\_\_  
Vert. Datum: NGVD29  NAVD88   
Meas. Units: Metric  Imperial

Corner -- Left as found  Found and tagged  Established  Reestablished  Rebuilt

Identification and type of corner found: Evidence used to identify or procedure used to establish or reestablish the corner:

FND. STR. ST. MONUMENTS WITH BRASS PIN SET IN CONC.  
MONUMENT ON STANFORD CT. HAS AN ILLEGIBLE TAG.  
MONUMENTS ARE AS SHOWN ON 8 RM 55 AND ON REVERSE.

AP# 020-101-07

A description of the physical condition of the monument as found and as set or reset:

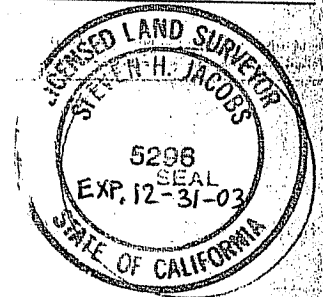
SET 3/4" IRON PIPE WITH TAG P.L.S. 5296 AS SHOWN  
ON REVERSE.

SURVEYOR'S STATEMENT

This Corner Record was prepared by me or under my direction in conformance with

the Land Surveyor's Act on MAY 27, 2002

Signed [Signature] P.L.S or R.C.E. No. P.L.S. 5296



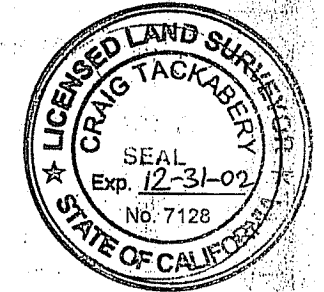
COUNTY SURVEYOR'S STATEMENT

This Corner Record was received JUNE 13, 2002

and examined and filed JULY 2, 2002

Signed [Signature] P.L.S or R.C.E. No. 7128

Title DEPUTY

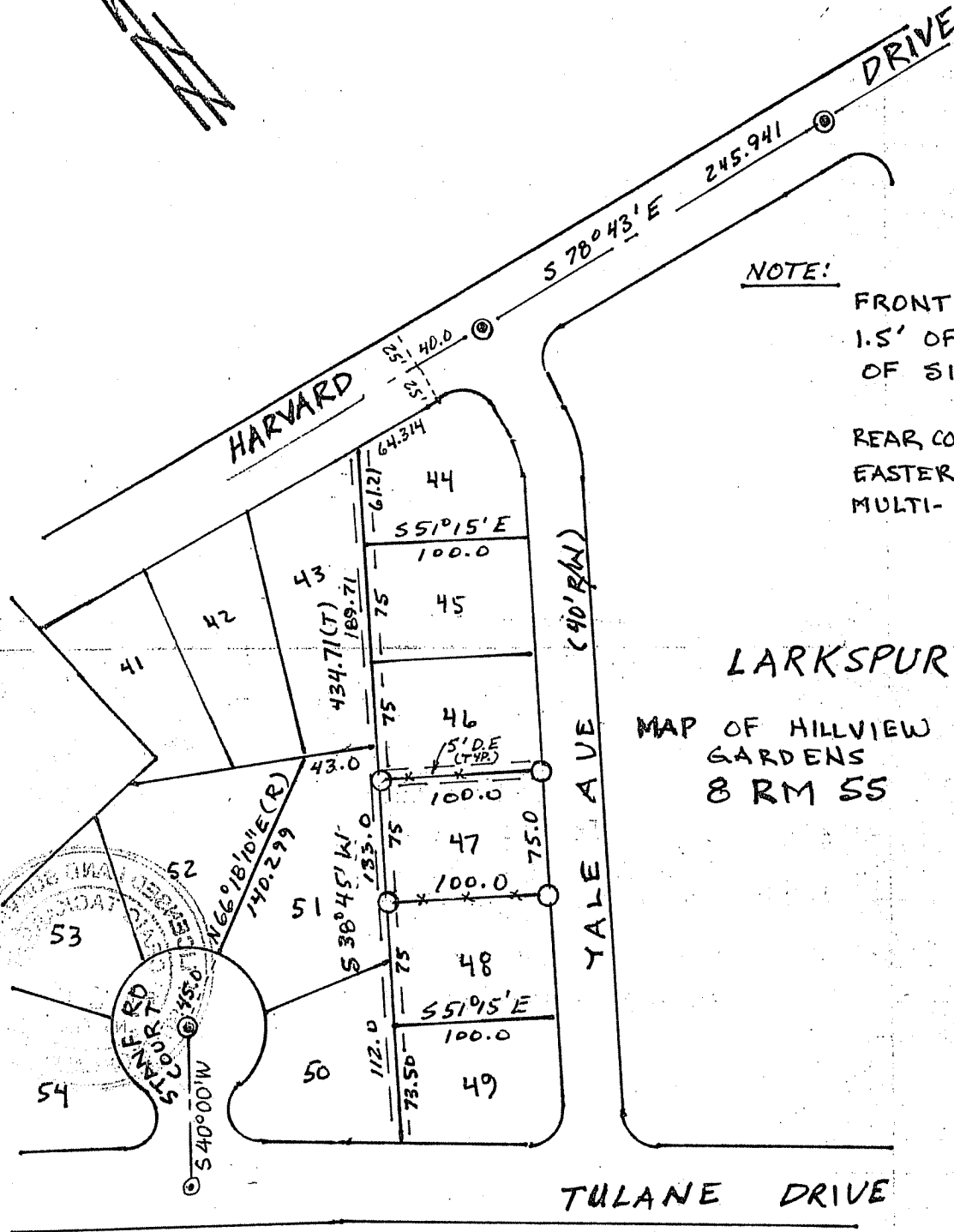


County Surveyor's Comment \_\_\_\_\_

**LEGEND**

- ⊙ FND. STD. ST. MON. W/ BRASS PIN IN CONC.
- SET 3/4" I.P. TAGGED P.L.S. S296
- (T) TOTAL
- (R) RADIAL
- D.E. DRAINAGE EASEMENT

SCALE: 1" = 100'



**NOTE:**

FRONT CORNERS  
1.5' OFF BACK  
OF SIDEWALK.

REAR CORNERS 1.5 TO 2.0'  
EASTERLY OF EXISTING  
MULTI-JOGGED FENCE.

**LARKSPUR**  
MAP OF HILLVIEW  
GARDENS  
8 RM 55

AP# 20-101-07