



JERRICO ASSOCIATES

SUITE 27
77 MARK DRIVE
SAN RAFAEL, CA 94903

7268 ✓

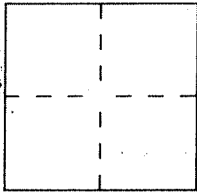
CORNER RECORD

Document Number 18-123-08

City of San Rafael

County of Marin, California

Brief Legal Description Lot 30 Bret Harte Heights Sub. 1 5 RM 72



CORNER TYPE

Government Corner Control
Meander Property
Rancho Other
Date of Survey July 30, 1997

COORDINATES (Optional)

N. _____
E. _____
Zone _____ Datum _____
Elev. _____

Corner — Left as found Found and tagged Established Reestablished Rebuilt

Identification and type of corner found: Evidence used to identify or procedure used to establish or reestablish the corner:

- (A) Found $2\frac{1}{2}$ " IP RE 416.
- (B) Found #5 rebar and cap LS 3887.
- (C) Found #5 rebar and cap LS 3887.
- (V) Found old IP/tag (obliterated) accepted as corner.

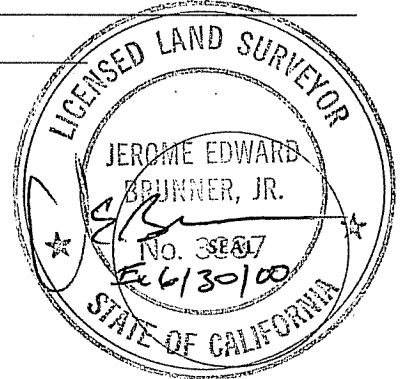
A description of the physical condition of the monument as found and as set or reset:

- (Y) (W) (X) (T) Set #5 rebar and cap LS 3887.
- (U) Set nail and tag LS 3887 in conc. driveway.
- (Z) Set nail and tag LS 3887 in conc. base of 4x Fc. post.

SURVEYOR'S STATEMENT

This Corner Record was prepared by me or under my direction in conformance with the Land Surveyors' Act on July 30 1997.

Signed [Signature] L.S. or R.C.E. Number LS 3887



COUNTY SURVEYOR'S STATEMENT

This Corner Record was received AUGUST 18 1997 and examined and filed AUGUST 20 1997.

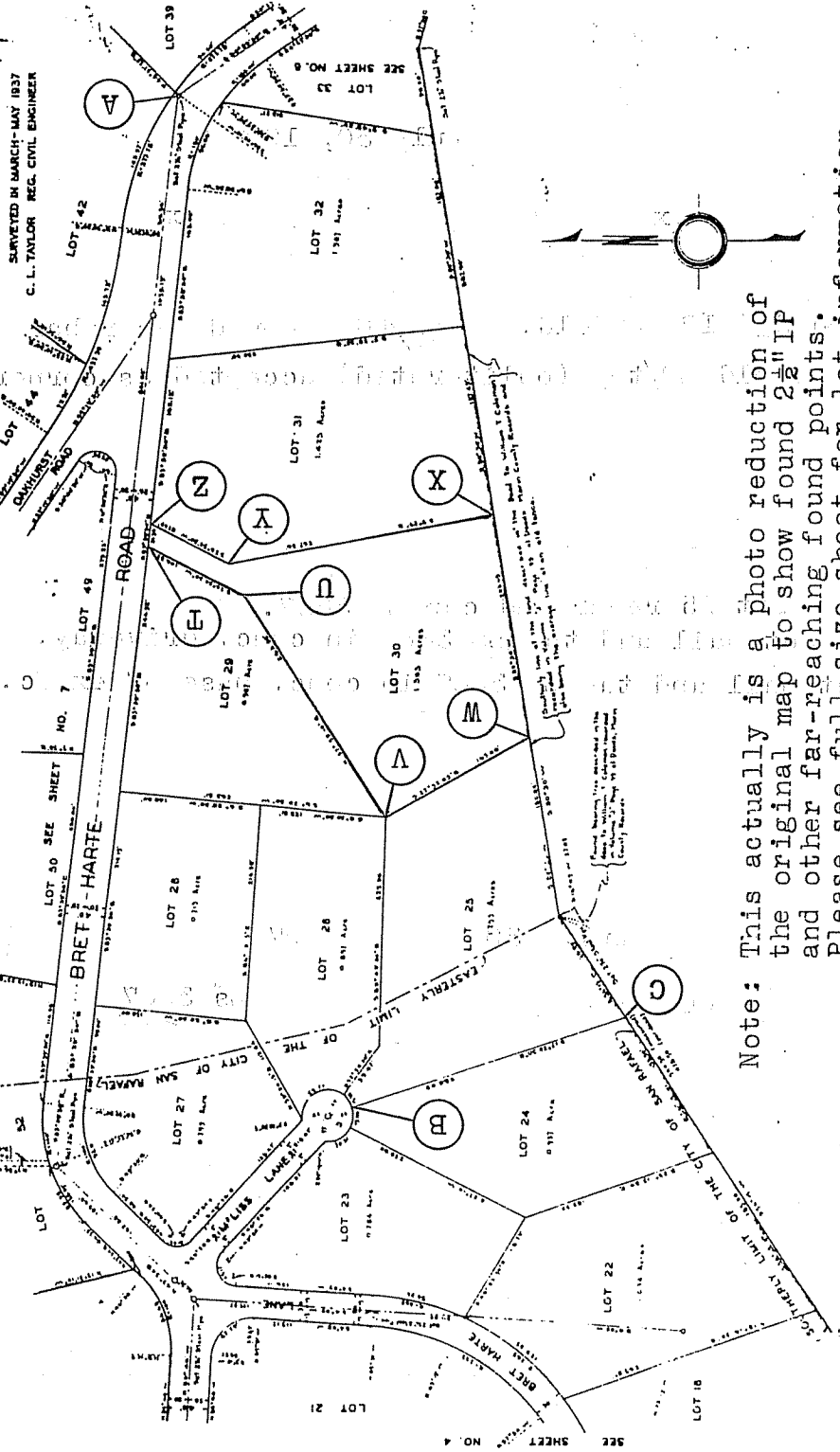
Signed [Signature] Title DEPUTY



County Surveyor's Comment _____

**BRET HARTE HEIGHTS
SUBDIVISION No. 1**

PARTLY IN THE CITY OF SAN RAFAEL AND PARTLY IN THE COUNTY OF MARIN
STATE OF CALIFORNIA



Note: This actually is a photo reduction of the original map to show found 2 1/2" IP and other far-reaching found points. Please see full size sheet for lot information.