

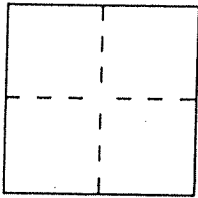
CORNER RECORD

Document Number 016-322-02

City of San Rafael

County of Marin, California

Brief Legal Description Lot 23 of 21 RM 21



CORNER TYPE

- Government Corner
- Meander
- Rancho
- Date of Survey _____
- Control
- Property
- Other

COORDINATES (Optional)

N. _____
 E. _____
 Zone _____ Datum _____
 Elev. _____

Corner — Left as found Found and tagged Established Reestablished Rebuilt

Identification and type of corner found: Evidence used to identify or procedure used to establish or reestablish the corner:

Found standard street monuments with disk and punch,
and found 3/4" iron pipe & cap embossed RCE 12094, Per 21 RM 21
(see sketch map - over)

A description of the physical condition of the monument as found and, as set or reset:

Set Property corner and line stake with 1/2 bar & cap
L.S. 5290 (see sketch map - over)

SURVEYOR'S STATEMENT

This Corner Record was prepared by me or under my direction in conformance with
 the Land Surveyors' Act on October 11th 2007

Signed David Harp L.S. or R.C.E. Number LS 5290



COUNTY SURVEYOR'S STATEMENT

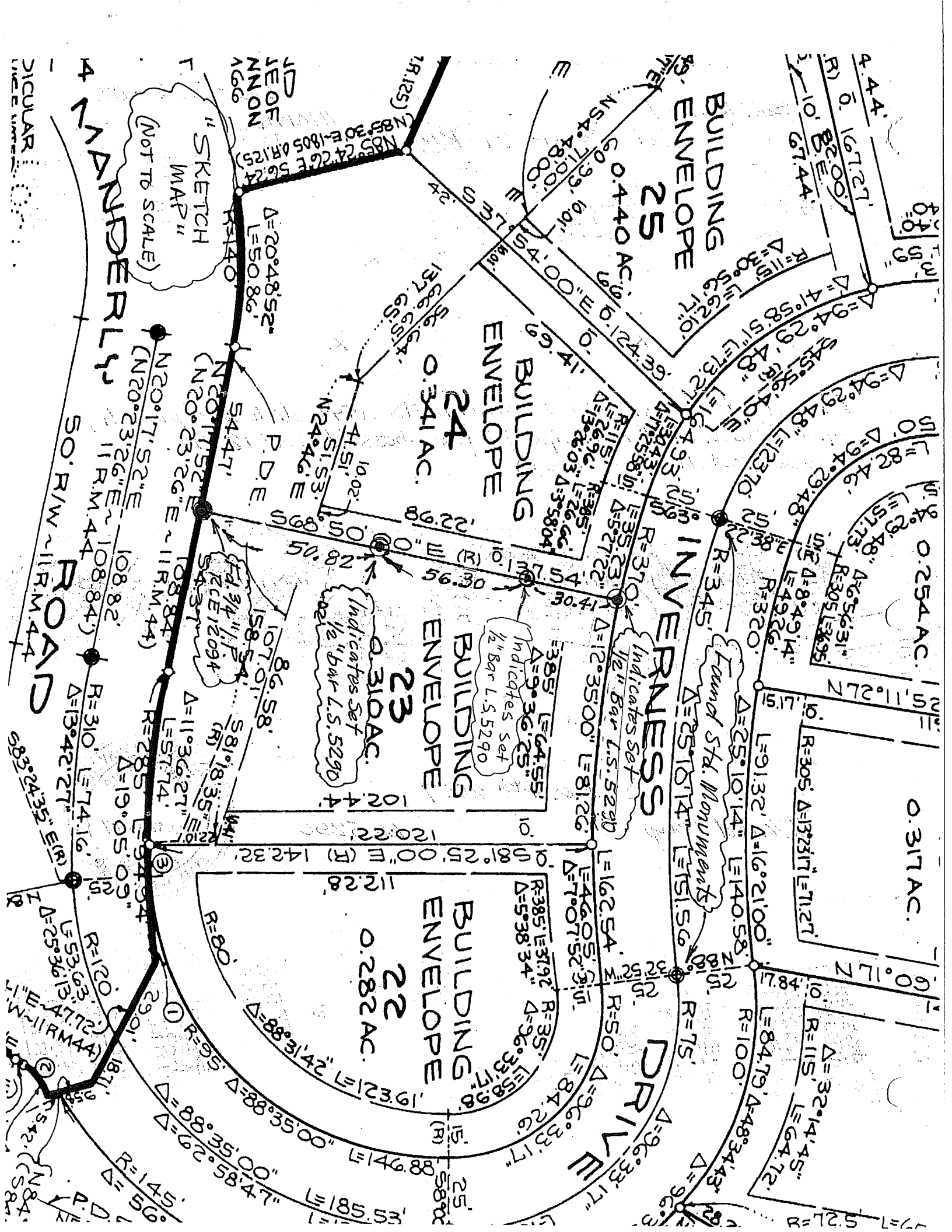
This Corner Record was received OCTOBER 15, 2007 and examined

and filed NOVEMBER 19, 2007

Signed _____ Title COUNTY SURVEYOR



County Surveyor's Comment _____



BUILDING ENVELOPE 25

BUILDING ENVELOPE 24

BUILDING ENVELOPE 23

BUILDING ENVELOPE 22

INVERNESS DRIVE

"SKETCH MAP" (NOT TO SCALE)

ROAD

CIRCULAR

4.44
0.16727
R) 0.8200
10' 67.44'

0.254 AC.
51.82' 46.
L=82.46
Δ=94.29' 48"
R=305' Δ=13°23'17" L=71.27'

0.317 AC.
L=91.32' Δ=16°21'00"
L=140.58'
R=305' Δ=13°23'17" L=71.27'

0.282 AC.
L=84.79' Δ=48°34'43"
R=115' L=64.72'
Δ=32°14'45"
R=72.5' L=67'

DRIVE
Δ=96°33'17"
R=75'
L=84.79'
R=100'
L=84.79' Δ=48°34'43"

0.341 AC.
L=107.01' Δ=11°36'27"
L=57.14'
R=285' L=94.94'
L=19°05'09"

Indicates Set
1/2" Bar L.S. 5290
Δ=9°36'25"
L=64.55'

Indicates Set
1/2" Bar L.S. 5290
Δ=9°36'25"
L=64.55'

50' R/W ~ 118 M. 44'
N20°17'52"E 108.82'
N20°23'26"E ~ 108.84'
R=310' L=74.16'
Δ=13°42'27"
R=120' L=53.63'
L=47.72'
L=118 M. 44'
R=120' L=53.63'
L=47.72'
L=118 M. 44'

50' R/W ~ 118 M. 44'
N20°23'26"E ~ 108.84'
R=310' L=74.16'
Δ=13°42'27"
R=120' L=53.63'
L=47.72'
L=118 M. 44'
R=120' L=53.63'
L=47.72'
L=118 M. 44'

50' R/W ~ 118 M. 44'
N20°23'26"E ~ 108.84'
R=310' L=74.16'
Δ=13°42'27"
R=120' L=53.63'
L=47.72'
L=118 M. 44'

10' 67.44'
R) 0.8200
10' 67.44'

0.440 AC.
L=107.01' Δ=11°36'27"
L=57.14'
R=285' L=94.94'
L=19°05'09"

0.310 AC.
L=107.01' Δ=11°36'27"
L=57.14'
R=285' L=94.94'
L=19°05'09"

0.310 AC.
L=107.01' Δ=11°36'27"
L=57.14'
R=285' L=94.94'
L=19°05'09"

0.282 AC.
L=84.79' Δ=48°34'43"
R=115' L=64.72'
Δ=32°14'45"
R=72.5' L=67'

0.282 AC.
L=84.79' Δ=48°34'43"
R=115' L=64.72'
Δ=32°14'45"
R=72.5' L=67'

0.282 AC.
L=84.79' Δ=48°34'43"
R=115' L=64.72'
Δ=32°14'45"
R=72.5' L=67'