

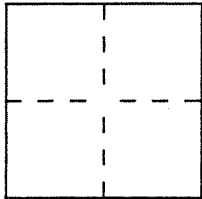
CORNER RECORD

Document Number A.P. # 16-301-17, 18

City of _____

County of MARIN, California

Brief Legal Description LOT 35 MAP OF SEASTRAND (17 RM 72)



CORNER TYPE

Government Corner Control
 Meander Property
 Rancho Other
 Date of Survey MAY 11 2001

COORDINATES (Optional)

N. _____
 E. _____
 Zone _____ Datum _____
 Elev. _____

Corner — Left as found Found and tagged Established Reestablished Rebuilt

Identification and type of corner found: Evidence used to identify or procedure used to establish or reestablish the corner:

RESET S/W AND S/E CORNERS LOT 35, MAP OF SEASTRAND (17 R.M. 72)

A description of the physical condition of the monument as found and as set or reset: _____

SET 3/4" IRON PIPE & TAG L.S. 3303

SURVEYOR'S STATEMENT

This Corner Record was prepared by me or under my direction in conformance with the Land Surveyors' Act on MAY 11 2001

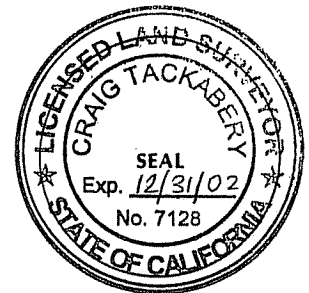
Signed John G. Stuber L.S. or R.C.E. Number L.S. 3303



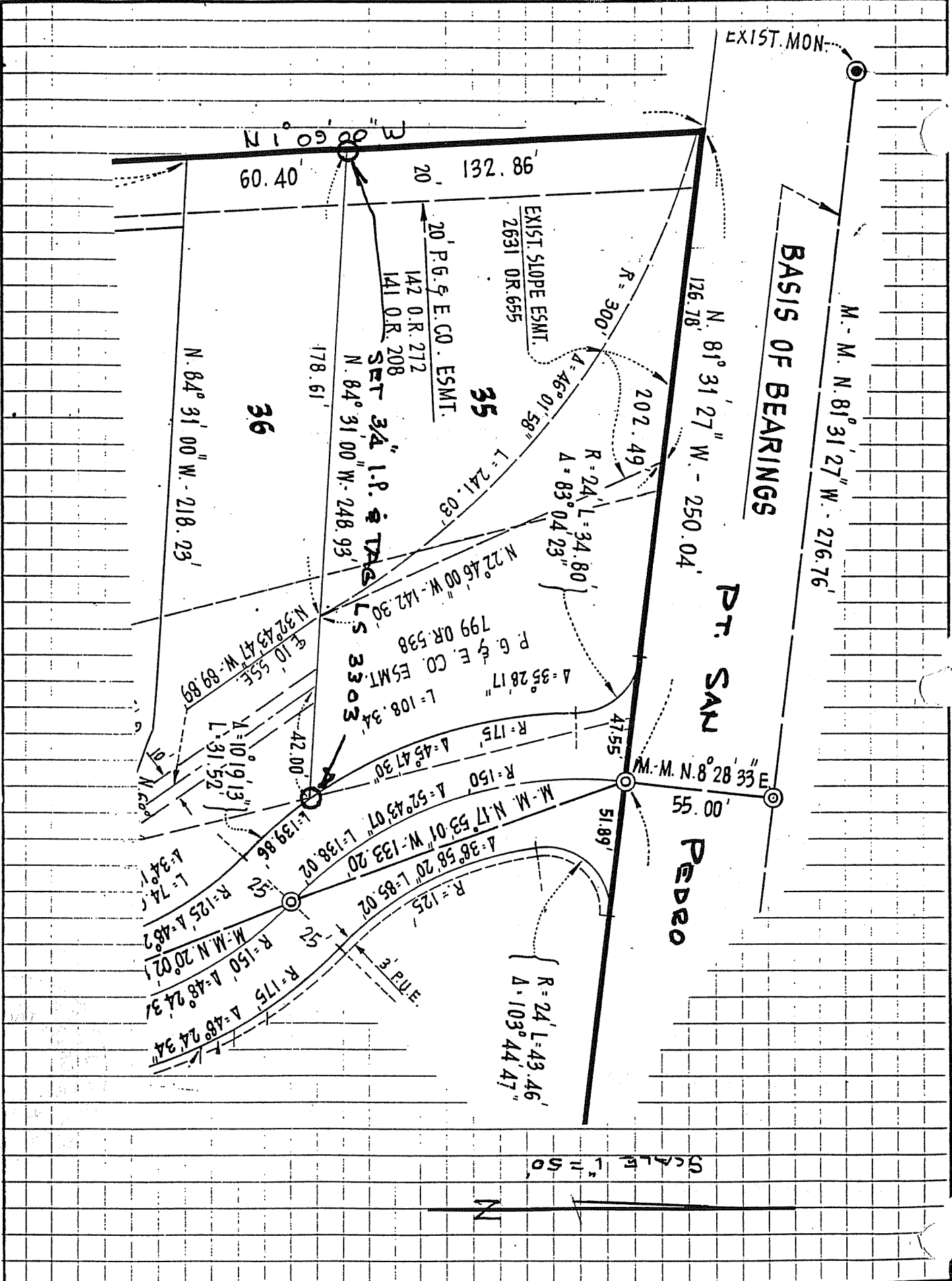
COUNTY SURVEYOR'S STATEMENT

This Corner Record was received MAY 16, 2001 and examined and filed MAY 21, 2001

Signed _____ Title DEPUTY



County Surveyor's Comment _____



EXIST. MON

BASIS OF BEARINGS

PT. SAN PEDRO

M.-M. N. 81° 31' 27\" W. - 276.76'

N. 81° 31' 27\" W. - 250.04'

M.-M. N. 8° 28' 33\" E

55.00'

Scale 1" = 50'



R = 24' L = 43.46'
Δ = 103° 44' 47"

R = 125'
Δ = 38° 58' 20"

R = 35' L = 34.80'
Δ = 83° 04' 23"

47.55'

51.89'

EXIST. SLOPE ESMT.
2631 OR. 655

20' P.G. & E. CO. ESMT.
142 O.R. 272
141 O.R. 208

SET 3/4" I.P. & TAG
N. 84° 31' 00\" W. - 248.93'

36

N. 84° 31' 00\" W. - 218.23'

M.-M. N. 20° 02' 1
R = 150' Δ = 48° 24' 37"

R = 125' Δ = 48° 24' 37"

L = 139.86'

L = 101.913"

Δ = 10° 19' 13"

L = 31.52'

Δ = 10° 55'

L = 10.55'

Δ = 32° 43' 47"

W. - 89.89'

N. 32° 43' 47"

178.61'

60.40'

M. 00° 00' 1 N

132.86'

20

202.49'

R = 300'

Δ = 46° 01' 58"

L = 241.03'

N. 22° 46' 00\" W. - 142.30'

P.G. & E. CO. ESMT.
799 OR. 538

L = 108.34'

Δ = 35° 28' 17"

R = 175'

Δ = 45° 47' 30"

R = 150'

Δ = 52° 43' 07"

M.-M. N. 17° 53' 01\" W. - 133.20'

L = 138.02'

Δ = 38° 58' 20"

L = 85.02'

R = 125'

Δ = 103° 44' 47"

R = 24' L = 43.46'

Δ = 103° 44' 47"

R = 125'

Δ = 38° 58' 20"

L = 85.02'

M.-M. N. 17° 53' 01\" W. - 133.20'