

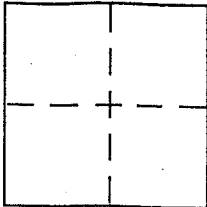
CORNER RECORD

Document Number APN 016-291-08

City of San Rafael

County of Marin, California

Brief Legal Description APN 016-291-08



CORNER TYPE

Government Corner Control
 Meander Property
 Rancho Other
 Date of Survey 9-16-05

COORDINATES (Optional)

N. _____
 E. _____
 Zone _____ NAD27 NAD83
 NAD83 Epoch _____
 Elev. _____
 Vert. Datum: NGVD29 NAVD88
 Meas. Units: Metric Imperial

Corner - Left as found Found and tagged Established Reestablished Rebuilt

Identification and type of corner found: Evidence used to identify or procedure used to establish or reestablish the corner:

Found IPs per 17 RMSB as shown. Found IPs per 2002 RS 66 as shown.
Found rebar with plug, no record, as shown.

A description of the physical condition of the monument as found and as set or reset:

Set IP as shown per 17 RM 58.

SURVEYOR'S STATEMENT

This Corner Record was prepared by me or under my direction in conformance with the Land Surveyor's Act on SEPTEMBER 19 2005

Signed [Signature] P.L.S or R.C.E. No. 30465

COUNTY SURVEYOR'S STATEMENT

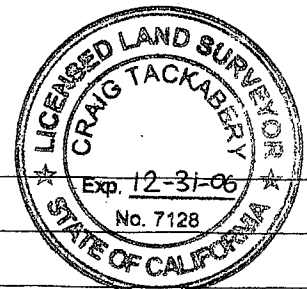
This Corner Record was received SEPTEMBER 27, 2005

and examined and filed OCTOBER 21, 2005

Signed [Signature] P.L.S or R.C.E. No. 7128

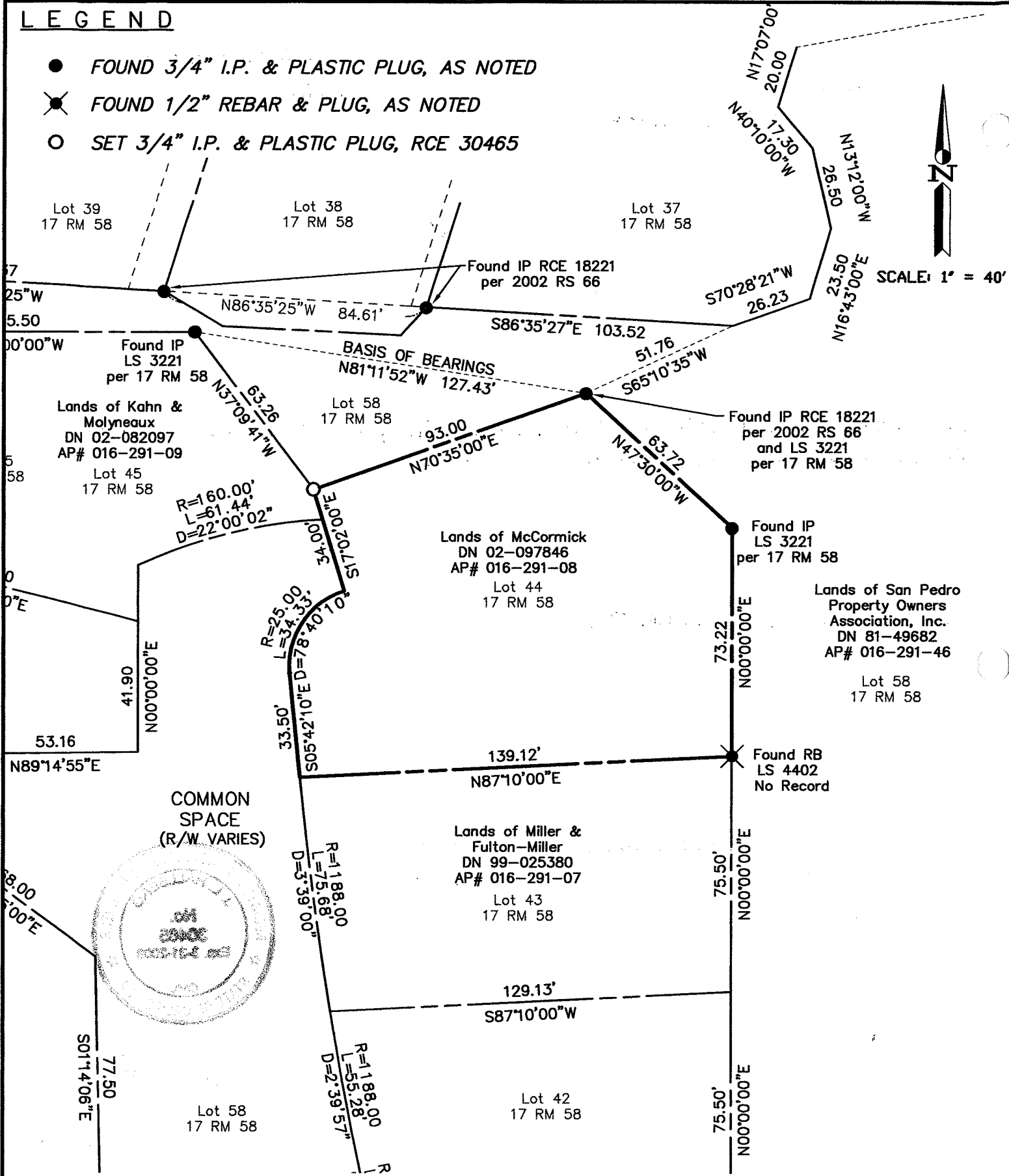
Title COUNTY SURVEYOR

County Surveyor's Comment _____



LEGEND

- FOUND 3/4" I.P. & PLASTIC PLUG, AS NOTED
- ✕ FOUND 1/2" REBAR & PLUG, AS NOTED
- SET 3/4" I.P. & PLASTIC PLUG, RCE 30465



Note: All distances are in feet and decimals thereof.

SHEET	1	OF	1
SCALE:	1" = 40'	DESIGN:	
DATE:	9-19-05	DRAWN:	SMc
FILE:	2005-160	CHECKED:	J.L.H

J.L. ENGINEERING
CIVIL ENGINEERS-LAND SURVEYORS
 1539 4th ST., SAN RAFAEL, CA. 94901 (415) 457-6647

Corner Record
 Lands of McCormick - 534 San Pedro Cove
 APN 016-291-08, San Rafael, Marin County, CA