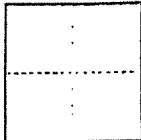


CORNER RECORD

COUNTY OF Marin T. 2 N R. 6 W (Projected) Mt. Diablo MERIDIAN CALIFORNIA

CORNER TYPE: GOV'T. CORNER MEANDER RANCHO CONTROL OTHER

CORNER IDENTIFICATION — DATE OF VISIT 23-23-1986



Being the most westerly corner of Lot 70 as shown on the Record of Survey of "Lots 66 to 70, 73 and 74, Block 3, Map of Uplands", filed in Book 17 of Surveys at Page 61, Marin County Records.

CORNER — LEFT AS FOUND FOUND AND TAGGED REESTABLISHED OBLITERATED CORNER REBUILT

PHYSICAL DESCRIPTION OF CORNER FOUND; EVIDENCE AND METHOD USED TO IDENTIFY OR REESTABLISH

Searched for, but could not find original 2"x2" wood monument.

PHYSICAL DESCRIPTION OF MONUMENTS REBUILT OR PERPETUATED

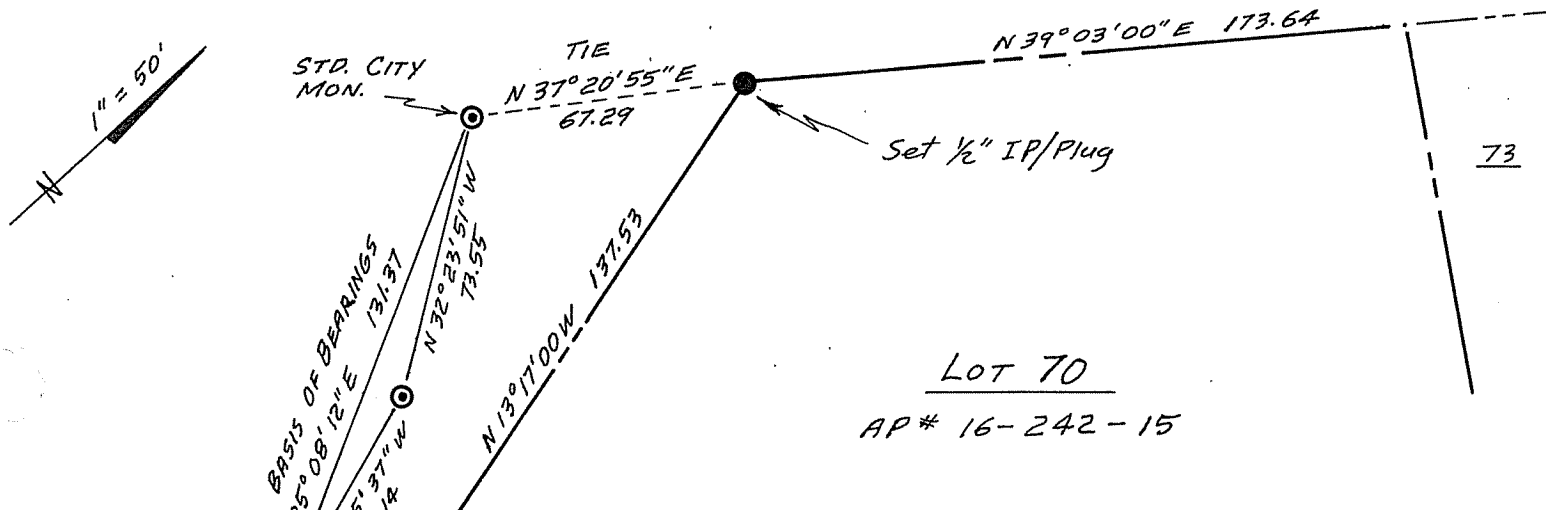
Set 1/2" x 30" iron pipe monument with plastic plug stamped L.S. 4419

CALIFORNIA COORDINATE SYSTEM ORDER: FIRST SECOND THIRD
STATIONS USED: NGS (USC & GS) STATE COUNTY OTHER STATION _____ STATION _____
ZONE _____ ELEVATION _____ NORTHINGS (Y) _____ EASTINGS (X) _____

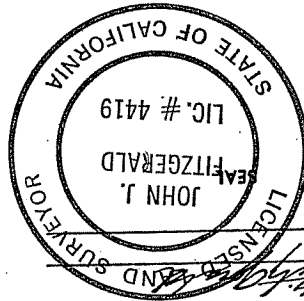
(Fold)

SKETCH: (Include reference tie or witness points, remarks and topo of area)

Job No. MB6-115



Lot 70
AP# 16-242-15

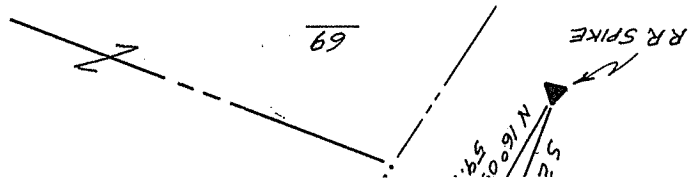


SURVEYOR'S CERTIFICATE
THIS CORNER RECORD WAS PREPARED BY ME OR UNDER MY
DIRECTION IN CONFORMANCE WITH THE LAND SURVEYORS ACT
ON DECEMBER 30th 1986
SIGNED: John J. Fitzgerald
L.S. License No.: 4419 666 M86-115



COUNTY SURVEYOR'S CERTIFICATE
THE CORNER RECORD WAS RECEIVED Dec. 30 1986
AND EXAMINED AND FILED Jan 30 1987
BY: Charles E. Murphy
THE Deputy County Surveyor
DOCUMENT NO. 4419
STATEMENT ON BACK OF SHEET
REGISTERED PROFESSIONAL ENGINEER
STATE OF CALIFORNIA
No. 18652
Exp. 6-30-89
CIVIL
SEAL

YES NO

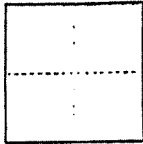


CORNER RECORD

COUNTY OF Marin T. 2 N R. 6 W (Pojected) Mt. Diablo MERIDIAN CALIFORNIA

CORNER TYPE: GOV'T. CORNER MEANDER RANCHO CONTROL OTHER

CORNER IDENTIFICATION — DATE OF VISIT 12-23-1986



Being the north corner of Lot 70 (in common with Lot 73) as shown on the Record of Survey of "Lots 66 to 70, 73 and 74, Block 3, Map of Uplands", filed in Book 17 of Surveys at Page 61, Marin County Records.

CORNER — LEFT AS FOUND FOUND AND TAGGED REESTABLISHED OBLITERATED CORNER REBUILT

PHYSICAL DESCRIPTION OF CORNER FOUND; EVIDENCE AND METHOD USED TO IDENTIFY OR REESTABLISH

Searched for, but could not find original 2"x2" wood monument.

PHYSICAL DESCRIPTION OF MONUMENTS REBUILT OR PERPETUATED

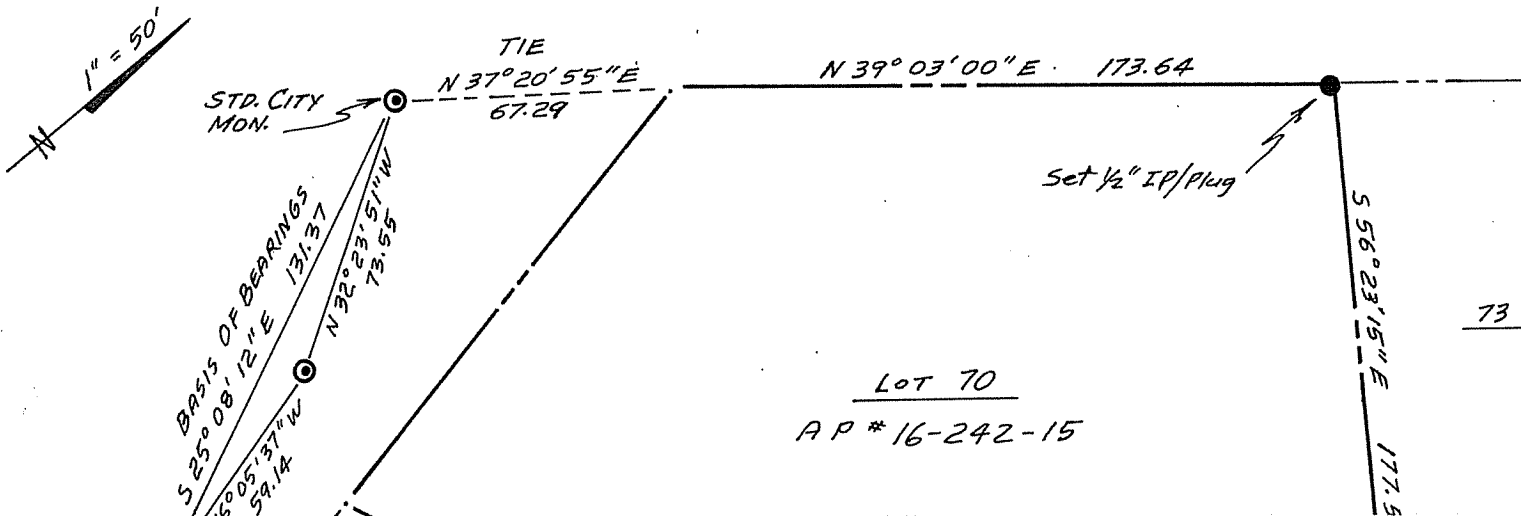
Set 1/2" x 30" iron pipe monument with plastic plug stamped L.S. 4419

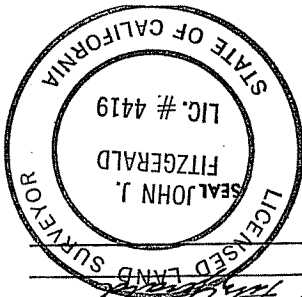
CALIFORNIA COORDINATE SYSTEM ORDER: FIRST SECOND THIRD
STATIONS USED: NGS (USC & GS) STATE COUNTY OTHER STATION _____ STATION _____
ZONE _____ ELEVATION _____ NORTHINGS (Y) _____ EASTINGS (X) _____

(Fold)

SKETCH: (Include reference tie or witness points, remarks and topo of area)

Job No. M86-115



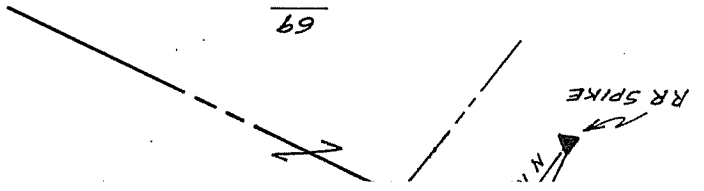


066 M86-115

SIGNED: John J. Fitzgerald
L.S. No. 4419

THIS CORNER RECORD WAS PREPARED BY ME OR UNDER MY DIRECTION IN CONFORMANCE WITH THE LAND SURVEYORS ACT ON DECEMBER 30th 1986

SURVEYOR'S CERTIFICATE



YES NO

DOCUMENT STATEMENT ON BACK OF SHEET

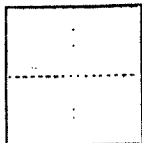
COUNTY SURVEYOR'S CERTIFICATE
THE CORNER RECORD WAS RECEIVED Dec. 30 1986
AND EXAMINED AND FILED Jan 20 1987
BY: Charles E. Murphy
TITLE: Deputy County Surveyor

CORNER RECORD

COUNTY OF Marin T. 2 N R. 6 W (Projected) Mt. Diablo MERIDIAN CALIFORNIA

CORNER TYPE: GOV'T. CORNER MEANDER RANCHO CONTROL OTHER

CORNER IDENTIFICATION — DATE OF VISIT 12-23 1986



Being the southeasterly corner of Lot 70 (in common with Lots 68 & 69) as shown on the Record of Survey of "Lots 66 to 70, 73 and 74, Block 3, Map of Uplands", filed in Book 17 of surveys at Page 61, Marin County Records.

CORNER — LEFT AS FOUND FOUND AND TAGGED REESTABLISHED OBLITERATED CORNER REBUILT

PHYSICAL DESCRIPTION OF CORNER FOUND; EVIDENCE AND METHOD USED TO IDENTIFY OR REESTABLISH

Found original 2"x2" hub and tack. Monument was deteriorated and disturbed.

PHYSICAL DESCRIPTION OF MONUMENTS REBUILT OR PERPETUATED

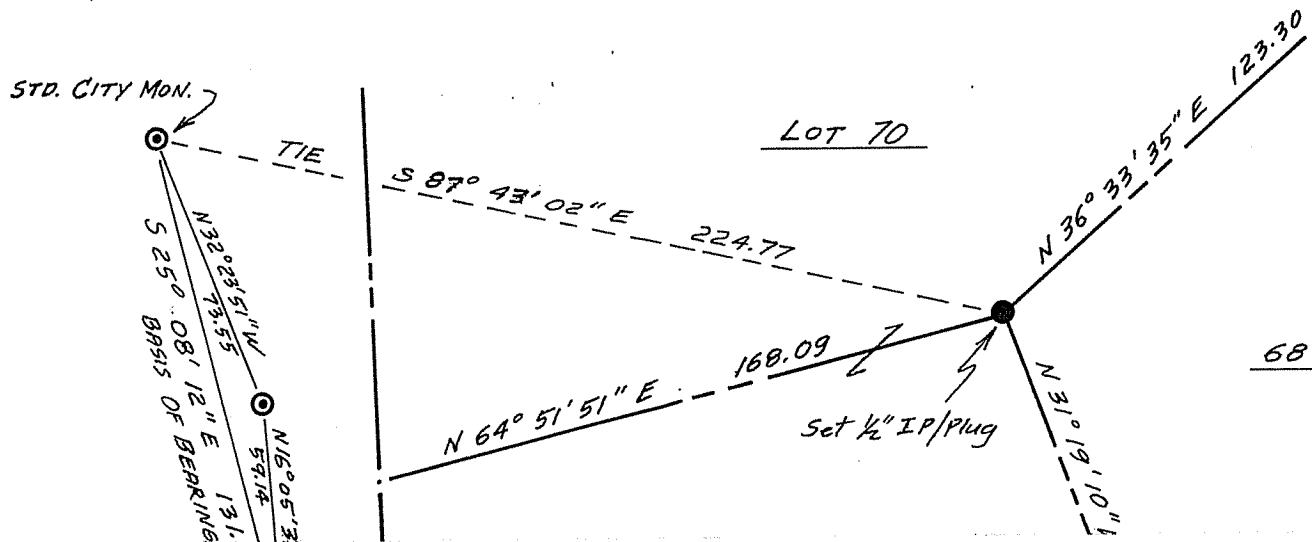
Removed old hub and set a 1/2" x 30" iron pipe monument with plastic plug stamped L.S. 4419

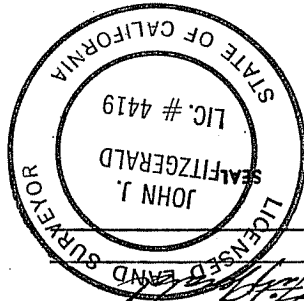
CALIFORNIA COORDINATE SYSTEM ORDER: FIRST SECOND THIRD
STATIONS USED: NGS (USC & GS) STATE COUNTY OTHER STATION _____ STATION _____
ZONE _____ ELEVATION _____ NORTHINGS (Y) _____ EASTINGS (X) _____

(Fold)

SKETCH: (Include reference tie or witness points, remarks and topo of area)

Job No. M86-115





SURVEYOR'S CERTIFICATE

THIS CORNER RECORD WAS PREPARED BY ME OR UNDER MY DIRECTION IN CONFORMANCE WITH THE LAND SURVEYORS ACT ON DECEMBER 30th 1986

SIGNED: John J. Fitzgerald No. 4419 L.S. No. Job M 86-115

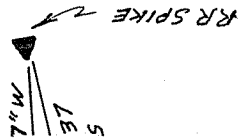
YES NO

DOCUMENT No. _____
 TITLE Deputy County Surveyor
 BY: Charles E. Murrin
 AND EXAMINED AND FILED Jan 20 19 87
 THE CORNER RECORD WAS RECEIVED Dec 30 19 86

COUNTY SURVEYOR'S CERTIFICATE

AP # 16-242-15
 69

N 138.79



1" = 4'