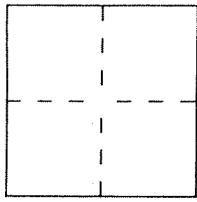


CORNER RECORD

Document Number A.P.N. 16-181-21

City of SAN RAFAEL County of MARIN, California

Brief Legal Description LOT 143, 9 RM 95



CORNER TYPE

Government Corner Control
 Meander Property
 Rancho Other
 Date of Survey 8/18/99

COORDINATES (Optional)

N. _____
 E. _____
 Zone _____ Datum _____
 Elev. _____

Corner — Left as found Found and tagged Established Reestablished Rebuilt

Identification and type of corner found: Evidence used to identify or procedure used to establish or reestablish the corner:
FOUND STANDARD STREET MONUMENTS PER 9 RM 95 AS WELL AS HUBS SHOWN ON 4 OS B3 AND ON REVERSE.

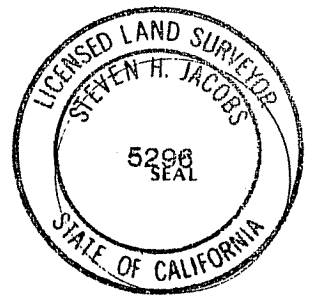
A description of the physical condition of the monument as found and as set or reset: SET NAIL & TAG IN CENTER OF FND. HUB AND SET 3/4" I.P.'S TAGGED PLS 5296 AS SHOWN ON REVERSE.

APN 016-181-21

SURVEYOR'S STATEMENT

This Corner Record was prepared by me or under my direction in conformance with the Land Surveyors' Act on 9/7/99 1999.

Signed [Signature] L.S. or R.C.E. Number PLS 5296



COUNTY SURVEYOR'S STATEMENT

This Corner Record was received OCTOBER 13 1999 and examined and filed OCTOBER 14 1999.

Signed [Signature] Title DEPUTY

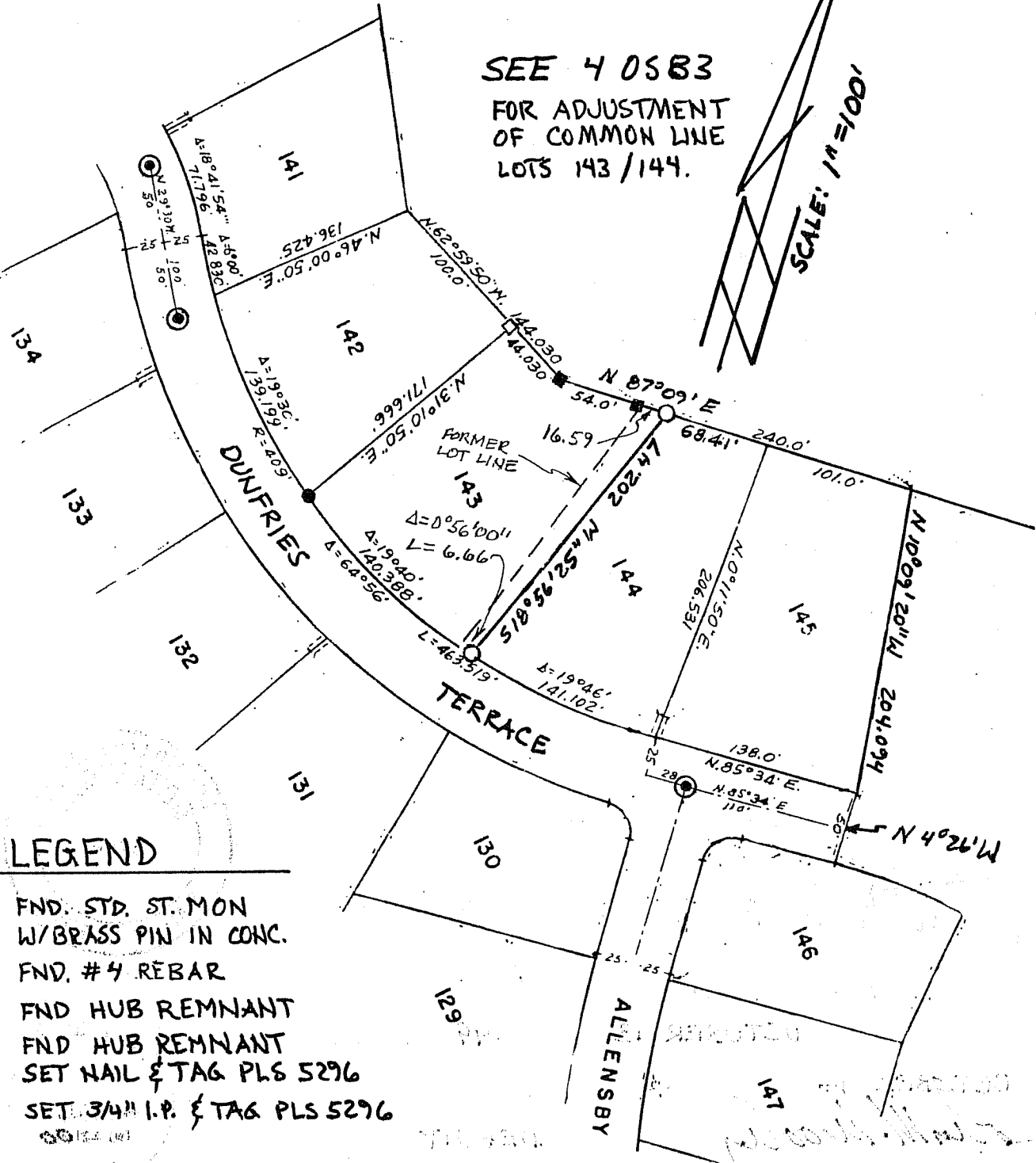


County Surveyor's Comment _____

MAP OF LOCH LOMOND UNIT FOUR 9 RM 95

SEE 4 0583
FOR ADJUSTMENT
OF COMMON LINE
LOTS 143/144.

SCALE: 1" = 100'



LEGEND

- ⊙ FND. STD. ST. MON
W/BRASS PIN IN CONC.
- FND. #4 REBAR
- FND HUB REMNANT
- FND HUB REMNANT
SET NAIL & TAG PLS 5296
- SET 3/4" I.P. & TAG PLS 5296

APN 016-181-21