

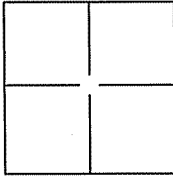
CORNER RECORD

Document Number APN 16-163-06

City of San Rafael

County of San Rafael, California

Brief Legal Description Lot 77, Unit 2, 55 Arguello Circle, 9 RM 78.



CORNER TYPE

Government Corner Control
Meander Property
Rancho Other

Date of Survey 9 March 2006

COORDINATES(Optional)

N. _____
E. _____
Zone _____ NAD27 NAD83
NAD83 Epoch _____
Elev. _____
Vert. Datum: NGVD29 NADV88
Meas. Units: Metric Imperial

Corner - Left as found Found and tagged Established Reestablished Rebuilt

Identification and type of corner found: Evidence used to identify or procedure used to establish or reestablish the corner:
Found Standard Street Monuments (2), City Of San Rafael, along Arguello Circle per 9 RM 78.

A description of the physical condition of the monument as found and as set or reset: _____
Set NW, NE, SE, and SW corners (4 corners) and three Ginney points along Westerly line on Lot 77, Unit 2, See Exhibit "A".

SURVEYOR'S STATEMENT

This Corner Record was prepared by me or under my direction in conformance with the Land Surveyor's Act on MARCH 10, 2006.

Signed [Signature] P.L.S. or R.C.E. No.: 18221



COUNTY SURVEYOR'S STATEMENT

This Corner Record was received MARCH 13, 2006 and examined and filed APRIL 12, 2006.

Signed [Signature] P.L.S. or R.C.E. No.: 7128

Title COUNTY SURVEYOR

County Surveyor's Comment _____



ARGUELLO CIRCLE

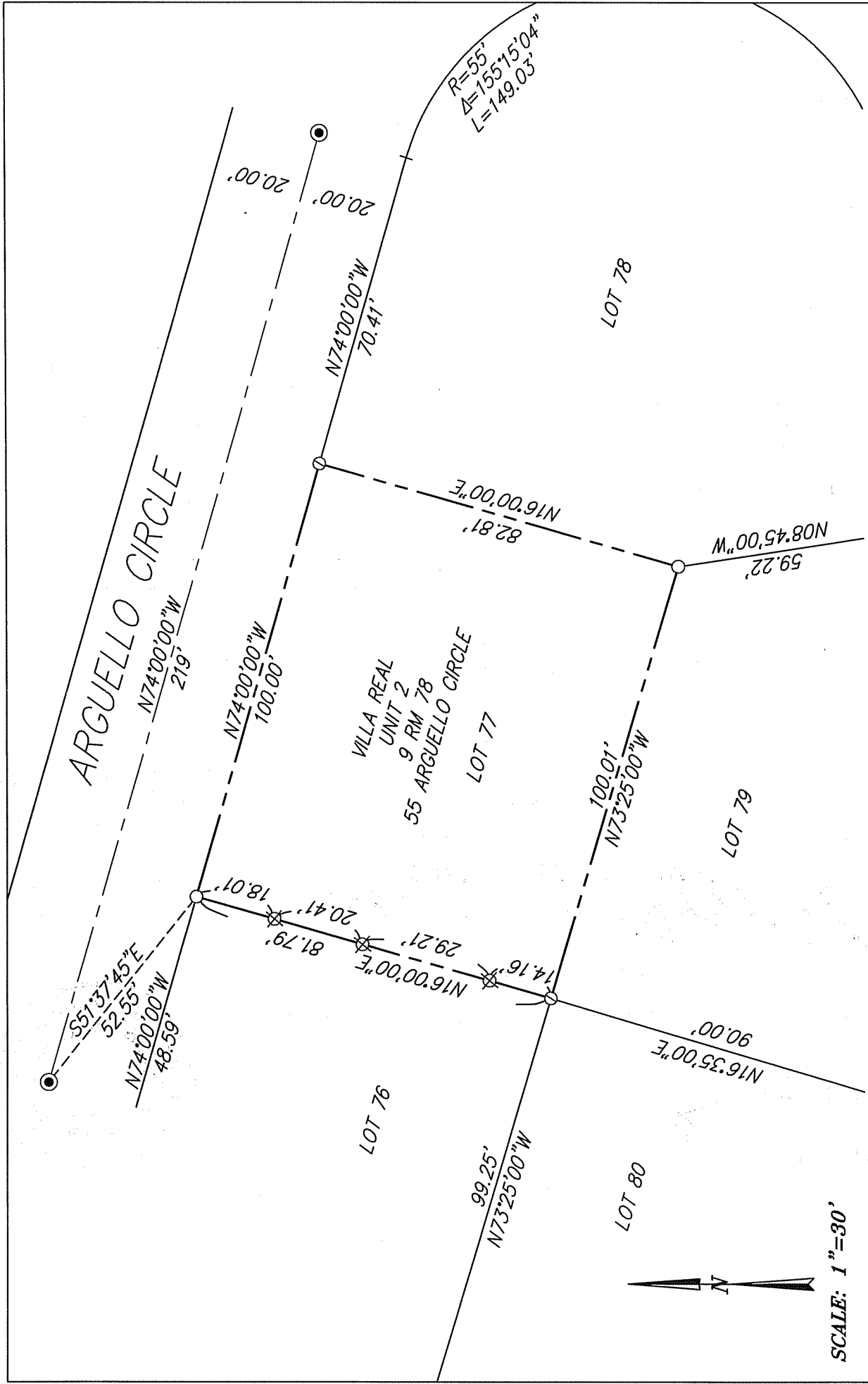


EXHIBIT "A"

ILS ASSOCIATES, INC.®
 CIVIL ENGINEERING AND LAND SURVEYING



79 GALLI DRIVE, SUITE A NOVATO, CA 94949-5717 (415)863-8200 FAX (415)863-2763

NOTE:
 ALL DIMENSIONS AND BEARINGS
 SHOWN HEREON ARE PER 9 RM 78.

- LEGEND**
- SET IRON PIPE & YELLOW CAP "R.C.E. 18221"
 - ⊙ SET BRASS NAIL AND TAG "R.C.E. 18221"
 - ⊗ SET GINNEY - POINT ON PROPERTY LINE
 - FOUND STANDARD STREET MONUMENT
- CITY OF SAN RAFAEL

SCALE: 1"=30'



A.P.N. 016-163-06