

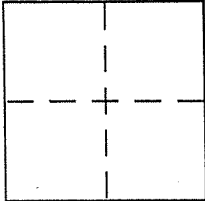
CORNER RECORD

Document Number A.P.N. 016-161-49

City of SAN RAFAEL

County of MARIN, California

Brief Legal Description LOT 64 & PORTION OF LOT 65 PER 9 R.M. 78



CORNER TYPE

Government Corner Control
Meander Property
Rancho Other
Date of Survey 10-15-03

COORDINATES (Optional)

N. _____
E. _____
Zone _____ NAD27 NAD83
NAD83 Epoch _____
Elev. _____
Vert. Datum: NGVD29 NAVD88
Meas. Units: Metric Imperial

Corner - Left as found Found and tagged Established Reestablished Rebuilt

Identification and type of corner found: Evidence used to identify or procedure used to establish or reestablish the corner:

= SEE OVER =

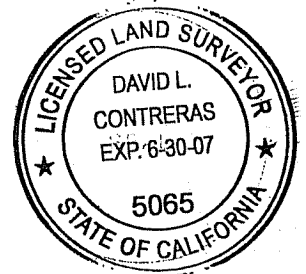
A description of the physical condition of the monument as found and as set or reset:

= SEE OVER =

SURVEYOR'S STATEMENT

This Corner Record was prepared by me or under my direction in conformance with the Land Surveyor's Act on FEBRUARY 8 2004

Signed David Contreras (P.L.S. or R.C.E. No. 5065)



COUNTY SURVEYOR'S STATEMENT

This Corner Record was received FEBRUARY 11, 2004

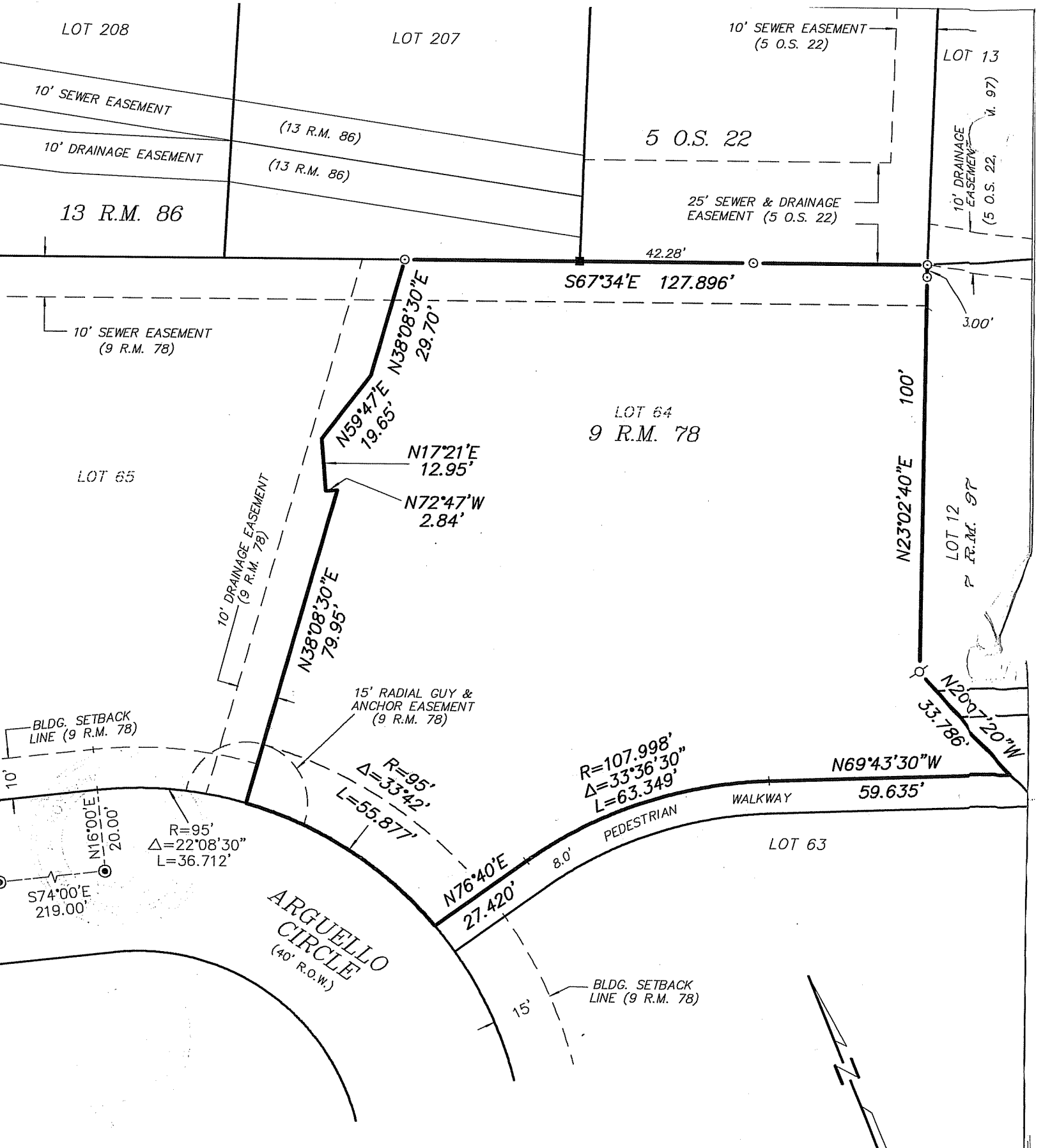
and examined and filed MARCH 4, 2004

Signed Craig Tackabery P.L.S. or R.C.E. No. 7128

Title COUNTY SURVEYOR



County Surveyor's Comment _____



LEGEND

- ⊙ = FOUND STANDARD STREET MONUMENT PER 9 R.M. 78
- = FOUND HUB & NAIL, REPLACED WITH 1/2" REBAR & CAP, LS 5065
- ⊘ = SET NAIL & TAG, L.S. 5065
- = SET 1/2" REBAR AND PLASTIC CAP, L.S. 5065

