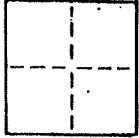


CORNER RECORD

COUNTY OF _____ T. _____ R. _____ MERIDIAN CALIFORNIA

CORNER TYPE: GOVT. CORNER MEANDER RANCHO CONTROL OTHER Lot 9

CORNER IDENTIFICATION — DATE OF VISIT _____ 19____ 8 RM 66



A.P. #16-134-03

CORNER — LEFT AS FOUND FOUND AND TAGGED REESTABLISHED OBLITERATED CORNER REBUILT

PHYSICAL DESCRIPTION OF CORNER FOUND; EVIDENCE AND METHOD USED TO IDENTIFY OR REESTABLISH

Set 3/4 inch iron pipe, tagged RCE 8181, at the easterly corner of Lot 9, "Map of Villa Real, Unit One, San Rafael, Calif." filed in Book 8 of Maps at Page 66, Marin County, California.

PHYSICAL DESCRIPTION OF MONUMENTS REBUILT OR PERPETUATED

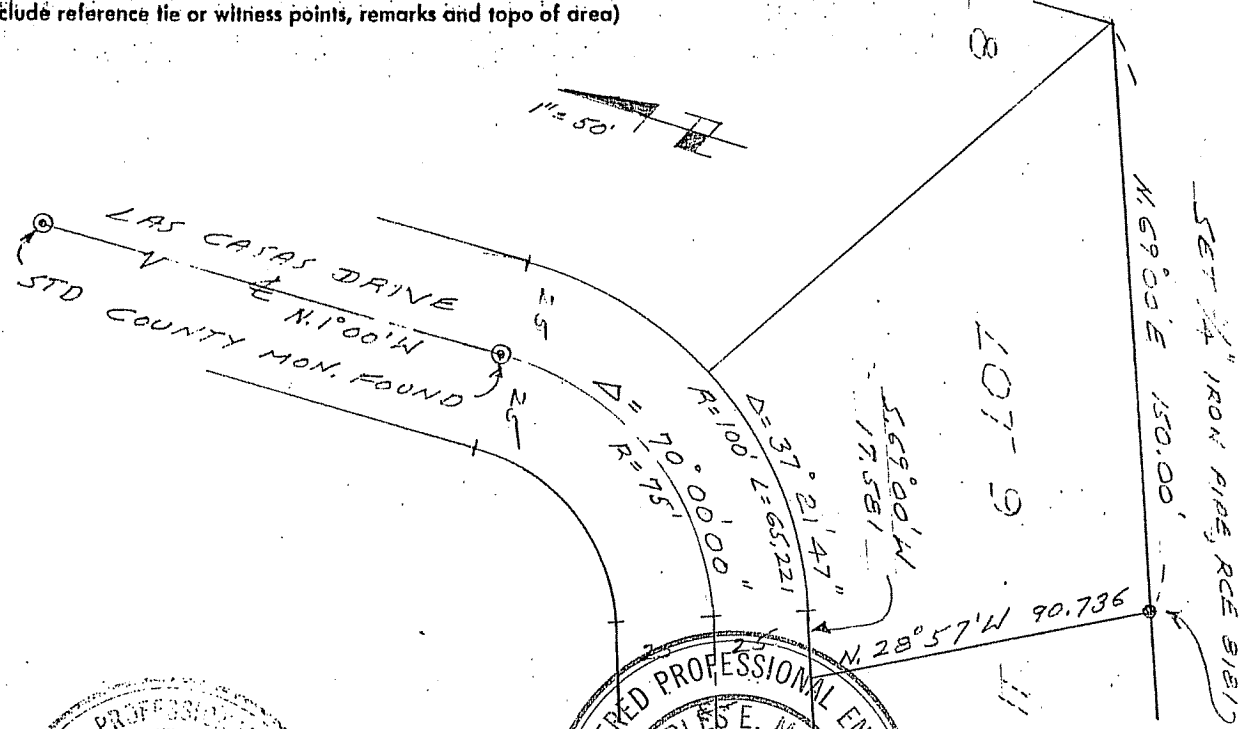
As shown

CALIFORNIA COORDINATE SYSTEM ORDER: FIRST SECOND THIRD

STATIONS USED: NGS (USC & GS) STATE COUNTY OTHER STATION _____ STATION _____

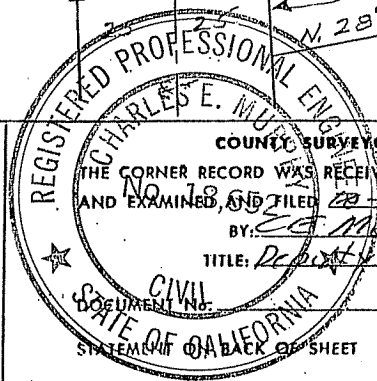
ZONE _____ ELEVATION _____ NORTHINGS (Y) _____ EASTINGS (X) _____

SKETCH: (Include reference tie or witness points, remarks and topo of area)



THIS CORNER RECORD WAS PREPARED BY ME OR UNDER MY DIRECTION IN CONFORMANCE WITH THE LAND SURVEYORS ACT ON Oct 22 No. 8181 1984

SIGNED: [Signature]
R.C.E. No. _____



COUNTY SURVEYOR'S CERTIFICATE
THE CORNER RECORD WAS RECEIVED 10-24 1984
AND EXAMINED, AND FILED 10-25 1984
BY: Ed Murphy
TITLE: Deputy County Surveyor

SEAL

YES NO