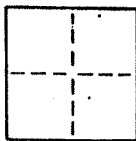


CORNER RECORD

COUNTY OF \_\_\_\_\_ T. \_\_\_\_\_ R. \_\_\_\_\_ MERIDIAN CALIFORNIA

CORNER TYPE: GOVT. CORNER  MEANDER  RANCHO  CONTROL  OTHER  Lot 8/9

CORNER IDENTIFICATION — DATE OF VISIT \_\_\_\_\_ 19\_\_\_\_ 8 RM 66



A.P. # 16-134-03 #04

CORNER — LEFT AS FOUND  FOUND AND TAGGED  REESTABLISHED OBLITERATED CORNER  REBUILT

PHYSICAL DESCRIPTION OF CORNER FOUND, EVIDENCE AND METHOD USED TO IDENTIFY OR REESTABLISH.

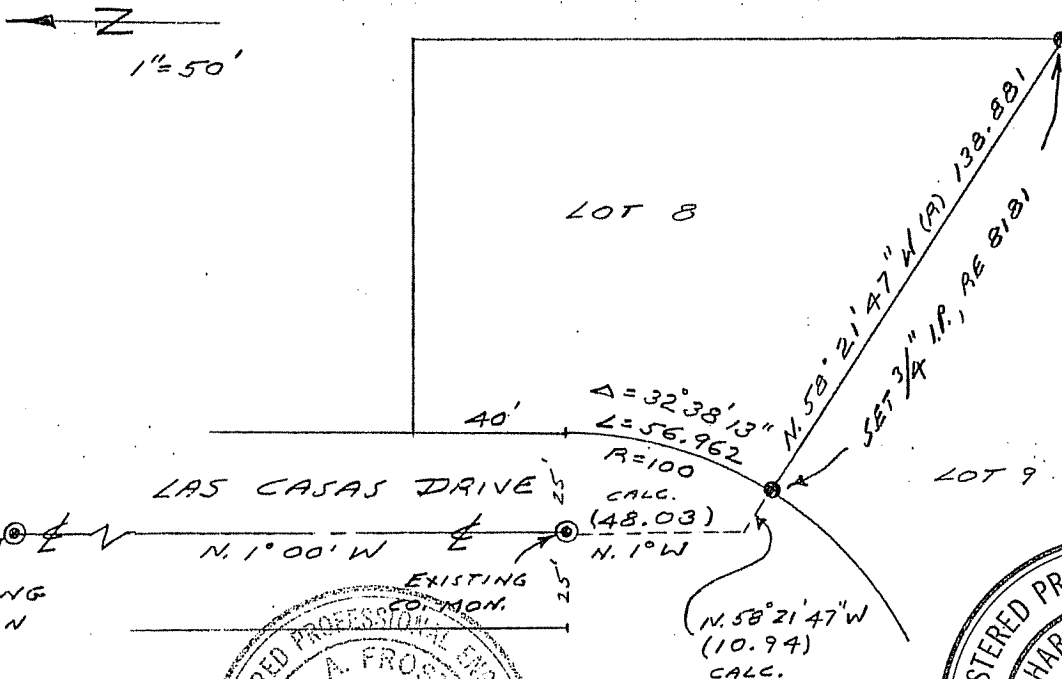
Set 3/4" iron pipe, tagged RCE 8181, at ends of dividing line Lot 8/Lot 9 "Map of Villa Real, Unit One, San Rafael, Calif." filed in Book 8 of Maps at Page 66, Marin County, California.

PHYSICAL DESCRIPTION OF MONUMENTS REBUILT OR PERPETUATED

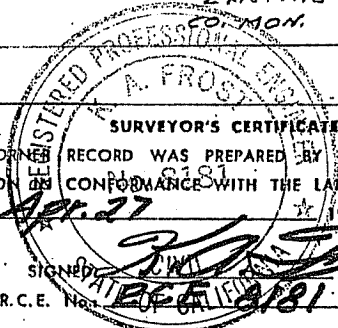
As shown

CALIFORNIA COORDINATE SYSTEM ORDER: FIRST  SECOND  THIRD   
STATIONS USED: NGS (USC & GS)  STATE  COUNTY  OTHER  STATION \_\_\_\_\_ STATION \_\_\_\_\_  
ZONE \_\_\_\_\_ ELEVATION \_\_\_\_\_ NORTHINGS (Y) \_\_\_\_\_ EASTINGS (X) \_\_\_\_\_

SKETCH: (Include reference tie or witness points, remarks and topo of area)

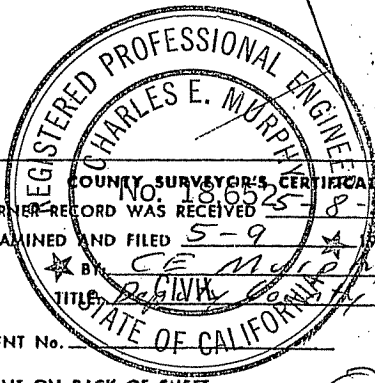


EXISTING CO. MON



SURVEYOR'S CERTIFICATE  
THIS CORNER RECORD WAS PREPARED BY ME OR UNDER MY DIRECTION IN CONFORMANCE WITH THE LAND SURVEYORS ACT ON APR 27 1984

SIGNED: [Signature]  
L.S. or R.C.E. No. 8181



COUNTY SURVEYOR'S CERTIFICATE  
THE CORNER RECORD WAS RECEIVED AND EXAMINED AND FILED 5-9 1984  
BY: CE Murphy  
TITLE: Reginald County Surveyor

DOCUMENT No. \_\_\_\_\_  
STATEMENT ON BACK OF SHEET

Should be only one corner per corner record.

C. E. Munday