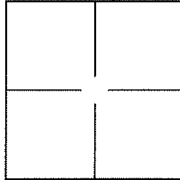


# CORNER RECORD

Agency Index 21-153  
 Document Number 016-133-05

City of San Rafael County of Marin, California  
 Brief Legal Description Lot 15 "MAP OF VILLA REAL, UNIT ONE" 8 Maps 66



### CORNER TYPE

Government Corner  Control   
 Meander  Property   
 Rancho  Other   
 Date of Survey August 12, 2021

### COORDINATES (Optional)

N. \_\_\_\_\_ E. \_\_\_\_\_  
 Elevation \_\_\_\_\_  
 Units  Metric  U.S. Survey Foot   
 Horizontal Datum \_\_\_\_\_  
 Zone \_\_\_\_\_ Epoch Date \_\_\_\_\_  
 Vertical Datum \_\_\_\_\_  
 Complies with Public Resources Code §§8801-8819  
 Complies with Public Resources Code §§88900-8902

PLS Act Ref.:  **8765(d)**  **8771**  **8773**  **Other:**  
 Corner/Monument:  Left as found  Established  Rebuilt  Pre-Construction  
 Found and tagged  Reestablished  Referenced  Post-Construction

Narrative of corner identified and monument as found, set, reset, replaced, or removed:  
 See sheet #2 for description(s):

FOUND (3) NAILS & TAGS, SET IN CONCRETE IN MONUMENT WELLS  
 SET (3) 3/4" IRON PIPES WITH PLASTIC PLUGS & TACKS "LS 7735"

### SURVEYOR'S STATEMENT

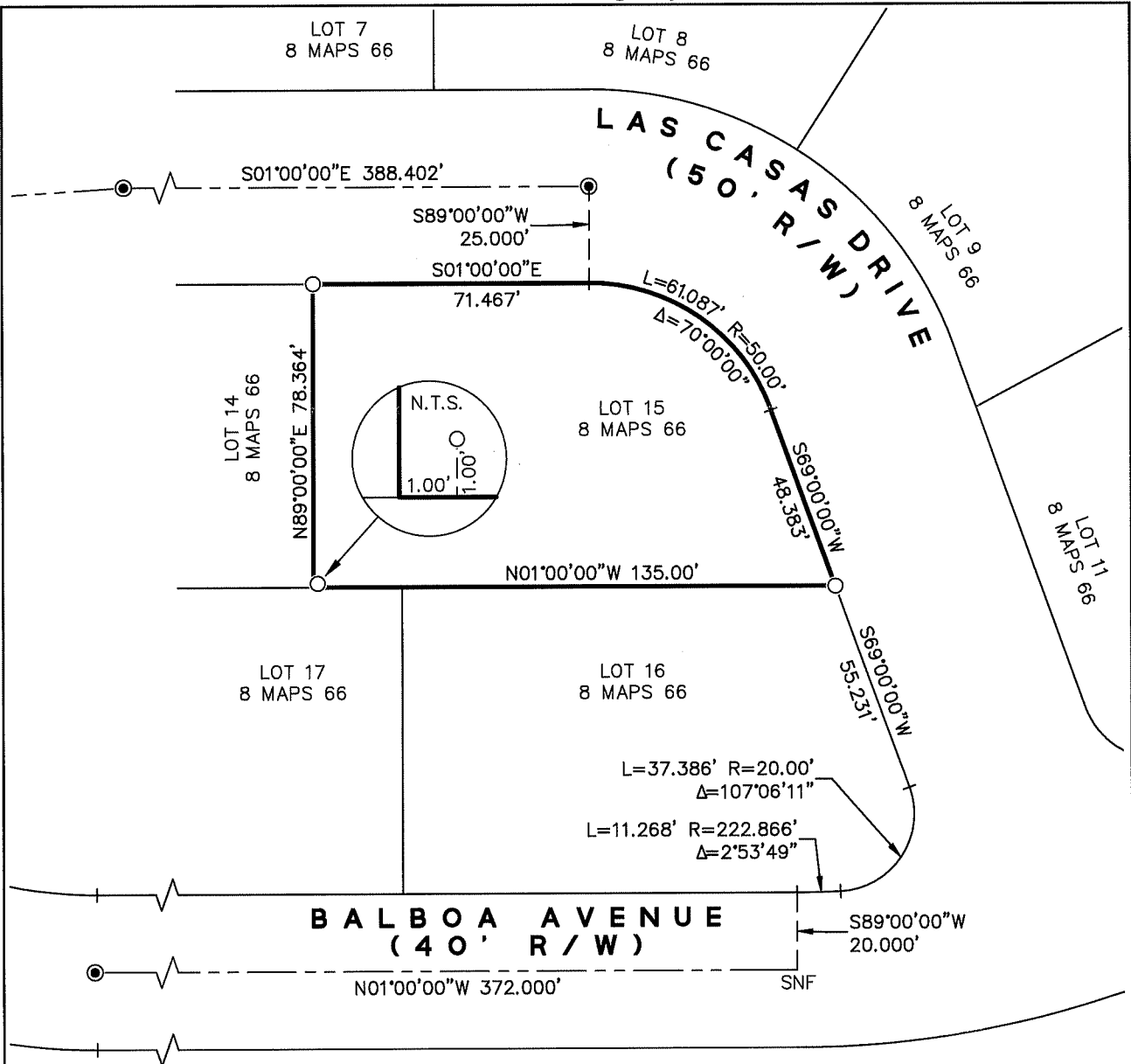
This Corner Record was prepared by me or under my direction in conformance with  
 the Professional Land Surveyor's Act on August 13, 2021  
 Signed \_\_\_\_\_ P.L.S. or R.C.E. No. LS 7735



### COUNTY SURVEYOR'S STATEMENT

This Corner Record was received 8.13.21  
 and examined and filed 1.31.22  
 Signed [Signature] P.L.S. or R.C.E. No. 9292  
 Title DEPUTY  
**County Surveyor's Comment:**



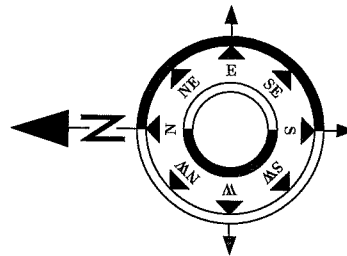


**LEGEND**

- N.T.S. NOT TO SCALE
- R/W RIGHT-OF-WAY
- SNF SEARCHED, NOTHING FOUND
- FOUND NAIL & TAG, ILLEGIBLE, SET IN CONCRETE, IN MONUMENT WELL
- SET 3/4" IRON PIPE, WITH PLASTIC PLUG & TACK, TAGGED "LS 7735"
- SUBJECT BOUNDARY LINE
- ===== ADJOINING LOT LINE OR R/W LINE
- - - - - MONUMENT LINE

**NOTE:**

ALL BEARINGS, DISTANCES AND CURVE DATA ARE RECORD INFORMATION SHOWN OR CALCULATED PER 8 MAPS 66.



**GRAPHIC SCALE**



( IN FEET )  
1 inch = 40 ft.

JOB NO. 6618-01