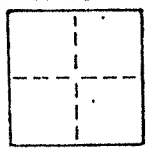


# CORNER RECORD

COUNTY OF Marin T. \_\_\_\_\_ R. \_\_\_\_\_ MERIDIAN \_\_\_\_\_ CALIFORNIA

CORNER TYPE: GOVT. CORNER  MEANDER  RANCHO  CONTROL  OTHER

CORNER IDENTIFICATION — DATE OF VISIT \_\_\_\_\_ 19\_\_\_\_



CORNER — LEFT AS FOUND  FOUND AND TAGGED  REESTABLISHED OBLITERATED CORNER  REBUILT

PHYSICAL DESCRIPTION OF CORNER FOUND; EVIDENCE AND METHOD USED TO IDENTIFY OR REESTABLISH

Set a brass tag "LS 3775" atop a wood fence to mark the Southwest corner of Lot 14, "Map of Villa Real, Unit One" Recorded in Book 8 of Maps at Page 66, Marin County Records.

PHYSICAL DESCRIPTION OF MONUMENTS REBUILT OR PERPETUATED

AS SHOWN

J- 1599 WAIN

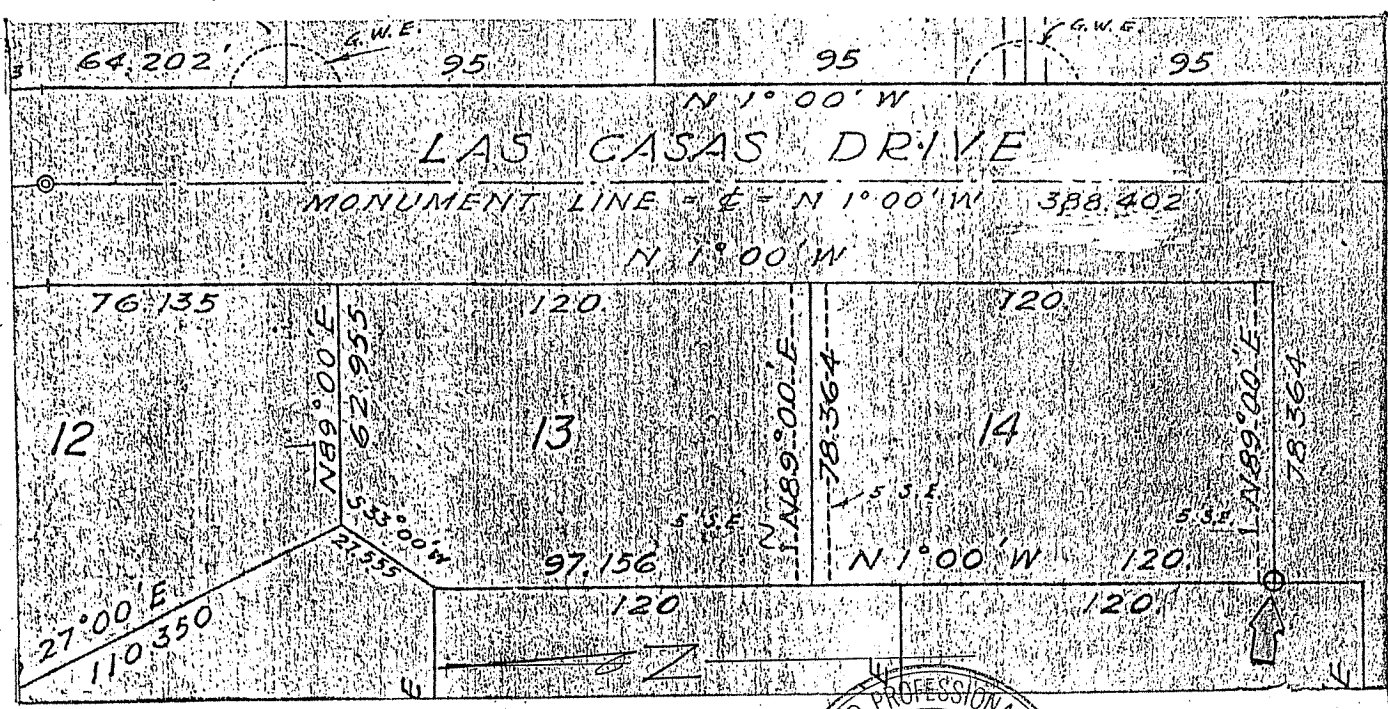
AP# 16-133-04

CALIFORNIA COORDINATE SYSTEM ORDER: FIRST  SECOND  THIRD

STATIONS USED: NGS (USC & GS)  STATE  COUNTY  OTHER  STATION \_\_\_\_\_ STATION \_\_\_\_\_

ZONE \_\_\_\_\_ ELEVATION \_\_\_\_\_ NORTHINGS (Y) \_\_\_\_\_ EASTINGS (X) \_\_\_\_\_

SKETCH: (Include reference tie or witness points, remarks and topo of area)



SURVEYOR'S CERTIFICATE

THIS CORNER RECORD WAS PREPARED BY ME OR UNDER MY DIRECTION IN CONFORMANCE WITH THE LAND SURVEYORS ACT ON June 17 1989 AT JOSEPH CRIPEN

SIGNED: [Signature]

L.S. or R.C.E. No.: 3775

Exp. DATE OF CALIFORNIA 12-31-89

REGISTERED PROFESSIONAL SURVEYOR

CHARLES E. MURPHY

COUNTY SURVEYOR'S CERTIFICATE

THE CORNER RECORD WAS RECEIVED 7-20 1989 AND EXAMINED AND FILED 190.18652

Exp. 6-30-89

TITLE: Pop. Co. Surv.

STATE OF CALIFORNIA

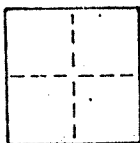
STATEMENT ON BACK OF SHEET

# CORNER RECORD

COUNTY OF Marin T. \_\_\_\_\_ R. \_\_\_\_\_ MERIDIAN \_\_\_\_\_ CALIFORNIA

CORNER TYPE: GOVT. CORNER  MEANDER  RANCHO  CONTROL  OTHER

CORNER IDENTIFICATION — DATE OF VISIT \_\_\_\_\_ 19\_\_



CORNER — LEFT AS FOUND  FOUND AND TAGGED  REESTABLISHED OBLITERATED CORNER  REBUILT

PHYSICAL DESCRIPTION OF CORNER FOUND; EVIDENCE AND METHOD USED TO IDENTIFY OR REESTABLISH

Set a 3/4" iron pipe with plastic plug "LS 3775" to mark the Northwest corner of Lot 14, "Map of Villa Real, Unit One" Recorded in Book 8 of Maps at Page 66, Marin County Records.

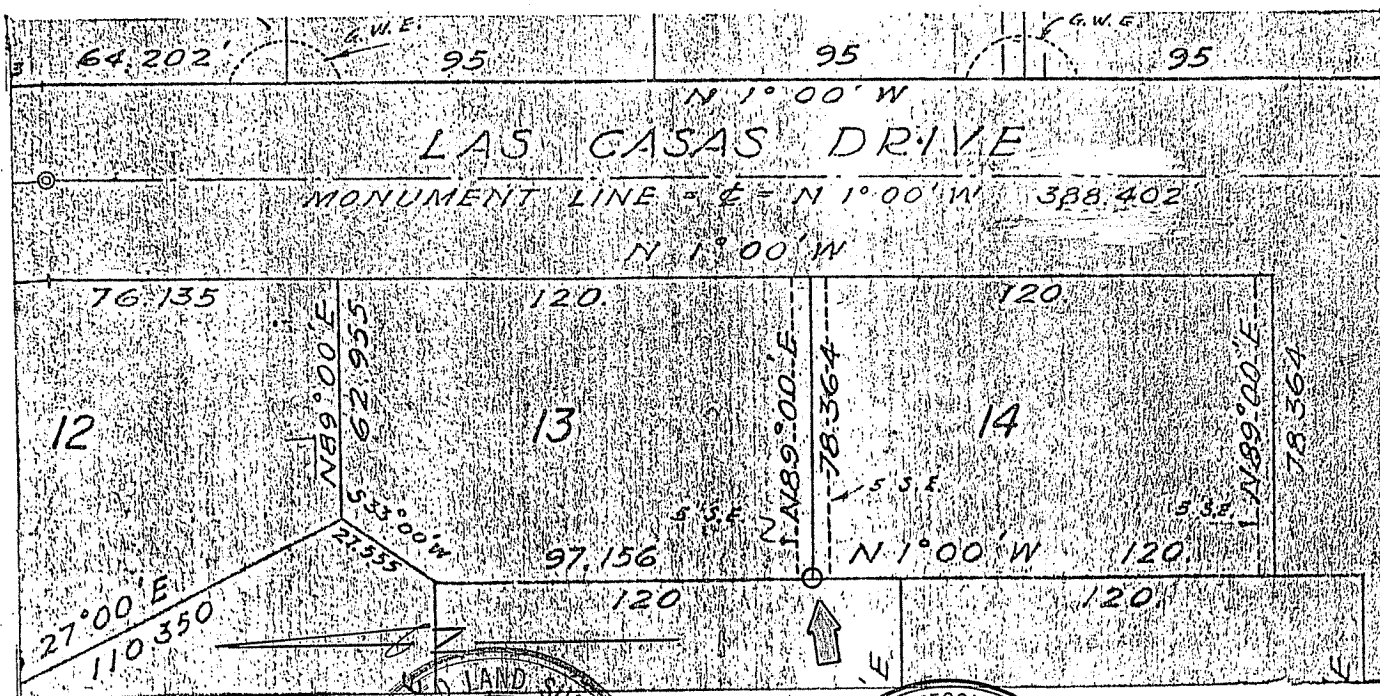
PHYSICAL DESCRIPTION OF MONUMENTS REBUILT OR PERPETUATED AS SHOWN

J-1599 WAIN

AP# 16-133-04

CALIFORNIA COORDINATE SYSTEM ORDER: FIRST  SECOND  THIRD   
 STATIONS USED: NGS (USC & GS)  STATE  COUNTY  OTHER  STATION \_\_\_\_\_ STATION \_\_\_\_\_  
 ZONE \_\_\_\_\_ ELEVATION \_\_\_\_\_ NORTHINGS (Y) \_\_\_\_\_ EASTINGS (X) \_\_\_\_\_

SKETCH: (Include reference tie or witness points, remarks and topo of area)



SURVEYOR'S CERTIFICATE  
 THIS CORNER RECORD WAS PREPARED BY JOSEPH GRIPPE UNDER MY DIRECTION IN CONFORMANCE WITH THE LAND SURVEYORS ACT ON June 17 1987 No. 3173

SIGNED: \_\_\_\_\_  
 L.S. or R.C.E. No.: \_\_\_\_\_  
 Expires: 6-17-87

REGISTERED PROFESSIONAL SURVEYOR'S CERTIFICATE  
 CHARLES E. MURPHY  
 THE CORNER RECORD WAS RECEIVED \_\_\_\_\_ 19\_\_  
 AND EXAMINED AND APPROVED 7-20 1987  
 No. 18652 BY: Charles E. Murphy  
 Exp. 6-30-89 TITLE: Dist. Col. Surv.  
 DOCUMENT No. \_\_\_\_\_  
 STATE OF CALIFORNIA  
 ATTENDING BACK OF SHEET

YES  NO