

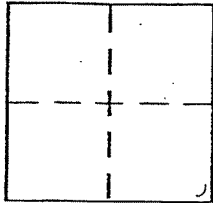
# CORNER RECORD

Document Number A.P.N. 16-122-07

City of San Rafael

County of Marin, California

Brief Legal Description Lot 74 Loch Lomond Unit One 7 RM 97A



### CORNER TYPE

Government Corner  Control   
 Meander  Property   
 Rancho  Other   
 Date of Survey \_\_\_\_\_

### COORDINATES (Optional)

N. \_\_\_\_\_  
 E. \_\_\_\_\_  
 Zone \_\_\_\_\_ NAD27  NAD83   
 NAD83 Epoch \_\_\_\_\_  
 Elev. \_\_\_\_\_  
 Vert. Datum: NGVD29  NAVD88   
 Meas. Units: Metric  Imperial

Corner - Left as found  Found and tagged  Established  Reestablished  Rebuilt

Identification and type of corner found: Evidence used to identify or procedure used to establish or reestablish the corner:

Found standard street monuments on the centerline of Manderly Road and rebar and tag "LS6234" at the southwest property corner.

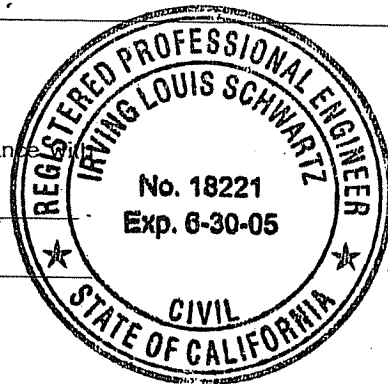
A description of the physical condition of the monument as found and as set or reset:

Set 3/4" iron pipe and tag "RCE 18221" at the northwest, northeast, and southeast property corners.

### SURVEYOR'S STATEMENT

This Corner Record was prepared by me or under my direction in conformance with the Land Surveyor's Act on AUGUST 28, 2002

Signed [Signature] PLS or R.C.E. No. 18221



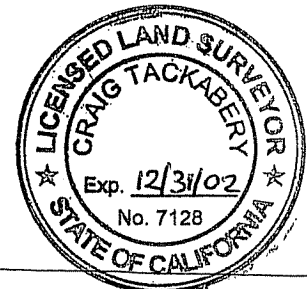
### COUNTY SURVEYOR'S STATEMENT

This Corner Record was received AUGUST 30, 2002

and examined and filed SEPTEMBER 3, 2002

Signed [Signature] P.L.S. or R.C.E. No. 7128

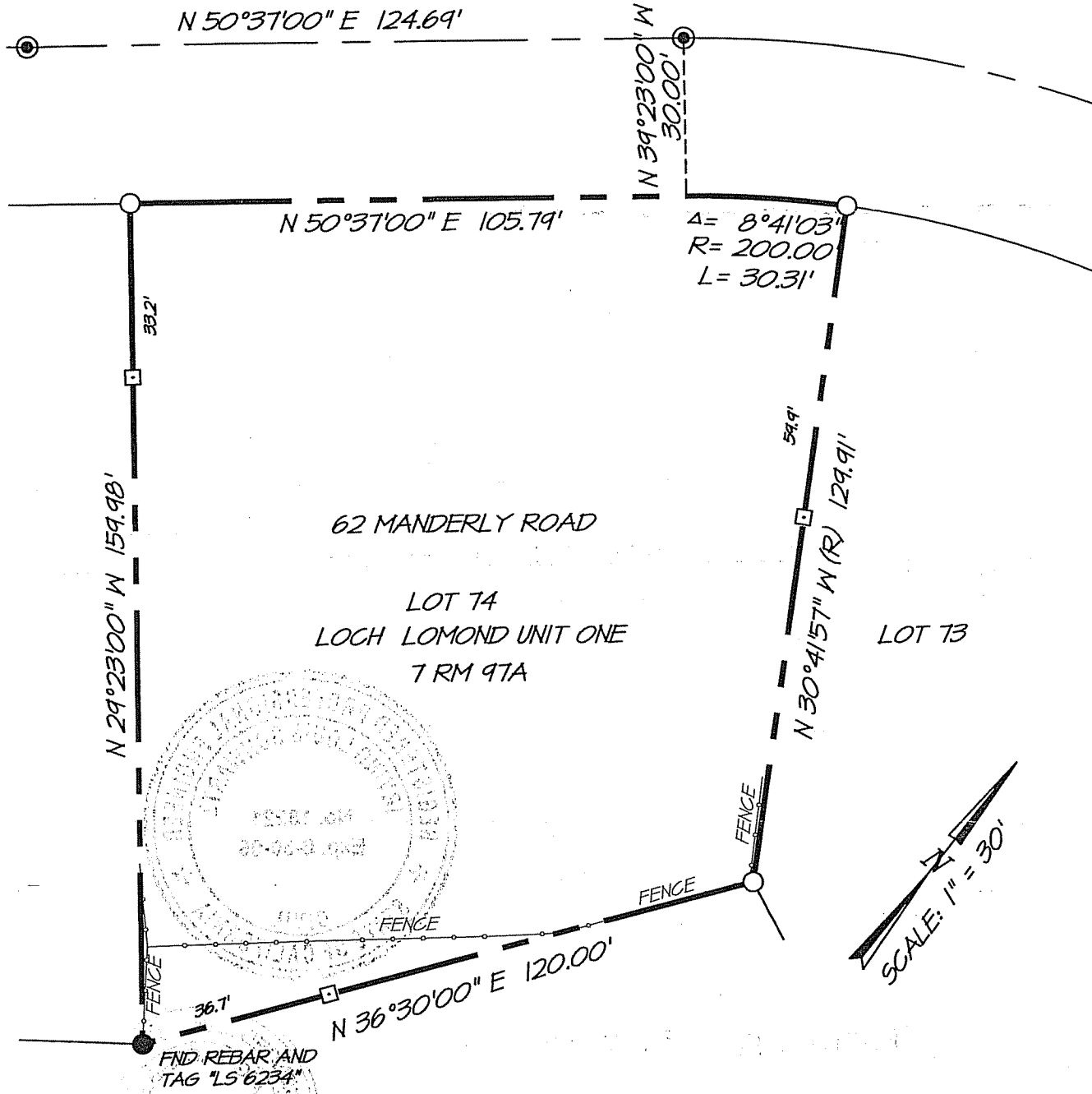
Title DEPUTY



County Surveyor's Comment \_\_\_\_\_

# MANDERLY ROAD

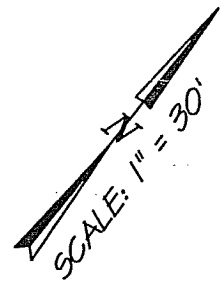
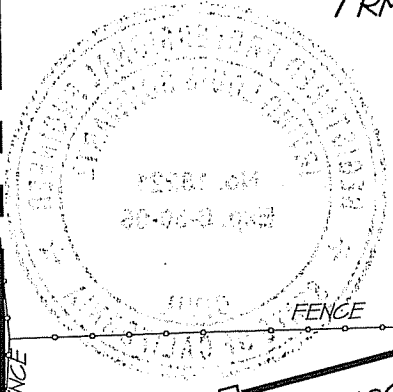
N 50°37'00" E 124.69'



62 MANDERLY ROAD

LOT 74  
LOCH LOMOND UNIT ONE  
7 RM 97A

LOT 73



**LEGEND**

- FOUND STANDARD STREET MONUMENT
- FOUND MONUMENT AS NOTED
- SET 3/4" IRON PIPE & TAG "R.C.E. 18221"
- SET WOOD HUB AND TACK

**NOTE:**

ALL DIMENSIONS SHOWN HEREON ARE PER 7 RM 97A UNLESS OTHERWISE NOTED.

## EXHIBIT "A"



**ILL. SCHWARTZ ASSOCIATES, INC.®**  
CIVIL ENGINEERING AND LAND SURVEYING