

CORNER RECORD

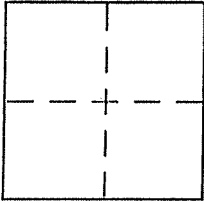
APN. 016-122-06

Document Number _____

City of SAN RAFAEL

County of MARIN, California

Brief Legal Description LOT 75, 7 RM 97A



CORNER TYPE

Government Corner Control
Meander Property
Rancho Other
Date of Survey 9/11/2001

COORDINATES (Optional)

N. _____
E. _____
Zone _____ NAD27 NAD83
NAD83 Epoch _____
Elev. _____
Vert. Datum: NGVD29 NAVD88
Meas. Units: Metric Imperial

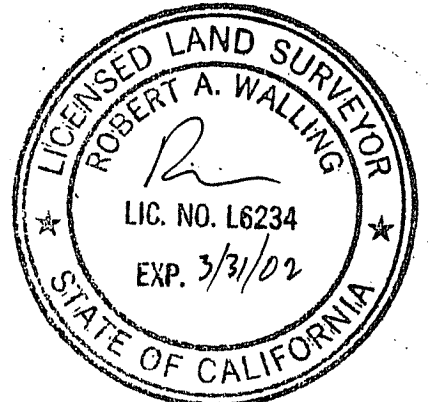
Corner - Left as found Found and tagged Established Reestablished Rebuilt

Identification and type of corner found: Evidence used to identify or procedure used to establish or reestablish the corner:
FOUND SUBDIVISION STANDARD STREET MONUMENT USED AS BASIS OF SURVEY. USED RECORD SUBDIVISION DATA PER 7 RM 97A, MGR.

A description of the physical condition of the monument as found and as set or reset: STREET MONUMENT UNDISTURBED SET 1/2" IRON PIN WITH CAP "LS6234"

SURVEYOR'S STATEMENT

This Corner Record was prepared by me or under my direction in conformance with the Land Surveyor's Act on SEPTEMBER 11, 2001
Signed [Signature] P.L.S or R.C.E. No. LS6234

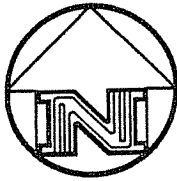


COUNTY SURVEYOR'S STATEMENT

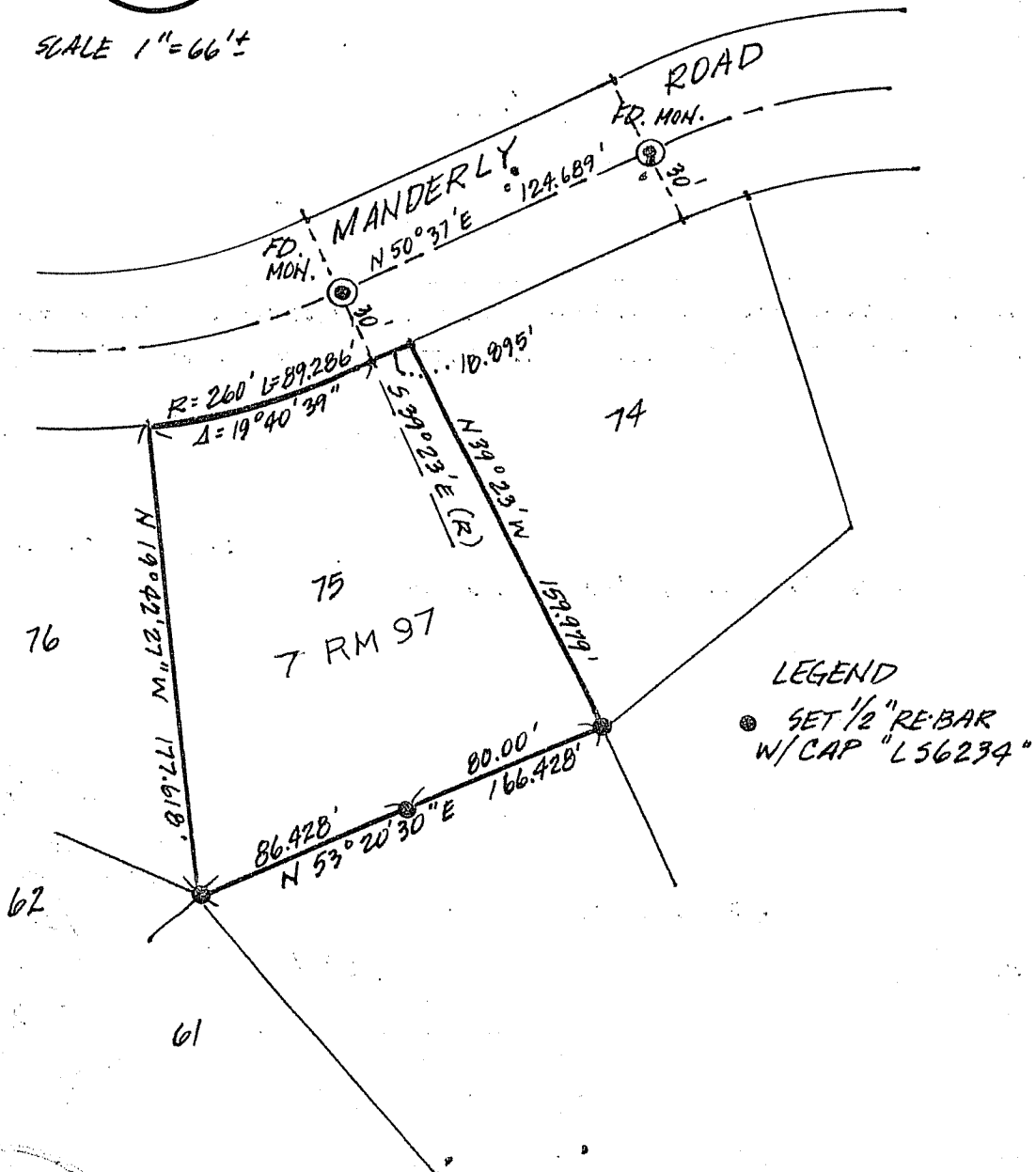
This Corner Record was received SEPTEMBER 19, 2001
and examined and filed SEPTEMBER 21, 2001
Signed [Signature] P.L.S or R.C.E. No. 7128
Title DEPUTY



County Surveyor's Comment _____

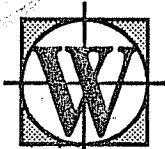
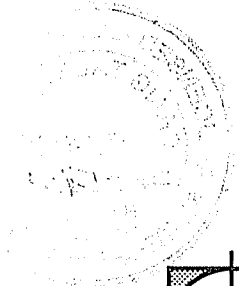


SCALE 1"=66'±



SURVEY PLAT
LANDS OF WRIGHT
APN. 016-122-06

SAN RAFAEL, MARIN CO, CALIFORNIA



BOB WALLING TECHNICAL SERVICES
P.O. Box 1346 • Glen Ellen, CA 95442
(707) 938-1593 (415) 382-1593

JH. 101-20

9/11/2001