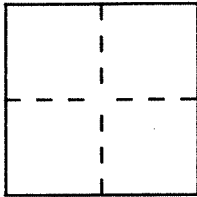


# CORNER RECORD

Document Number 16-113-02 & 03

City of San Rafael County of Marin, California

Brief Legal Description Lots 168 & 169 Map of Loch Lomond Unit 6, 10 RM 43 MCR



### CORNER TYPE

Government Corner  Control   
 Meander  Property   
 Rancho  Other   
 Date of Survey \_\_\_\_\_

### COORDINATES (Optional)

N. \_\_\_\_\_  
 E. \_\_\_\_\_  
 Zone \_\_\_\_\_ Datum \_\_\_\_\_  
 Elev. \_\_\_\_\_

Corner — Left as found  Found and tagged  Established  Reestablished  Rebuilt

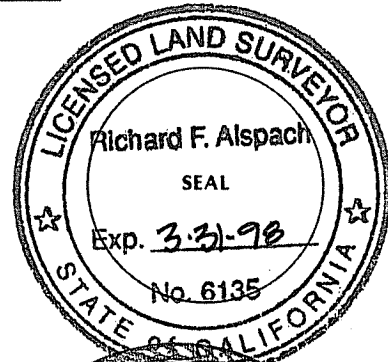
Identification and type of corner found: Evidence used to identify or procedure used to establish or reestablish the corner:  
Set monuments at corners of lots 168 & 169 at record dimensions per  
10 RM 43 from found original street monuments on Dorian Way  
(see sketch on page 2)

A description of the physical condition of the monument as found and as set or reset: \_\_\_\_\_  
Set 3/4" x 18" iron pipe with plastic plug "LS 6135"

### SURVEYOR'S STATEMENT

This Corner Record was prepared by me or under my direction in conformance with  
 the Land Surveyors' Act on May 4 1994.

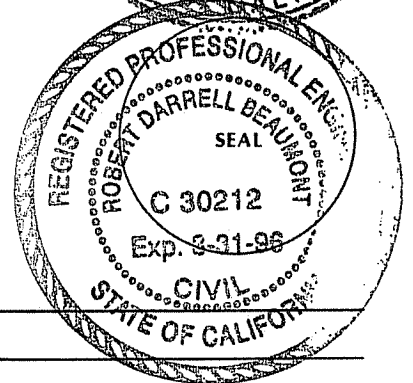
Signed Richard F. Alspach L.S. or R.C.E. Number 6135



### COUNTY SURVEYOR'S STATEMENT

This Corner Record was received MAY 9 1994 and examined  
 and filed S-9 1994.

Signed Robert Darrell Beaumont Title DES



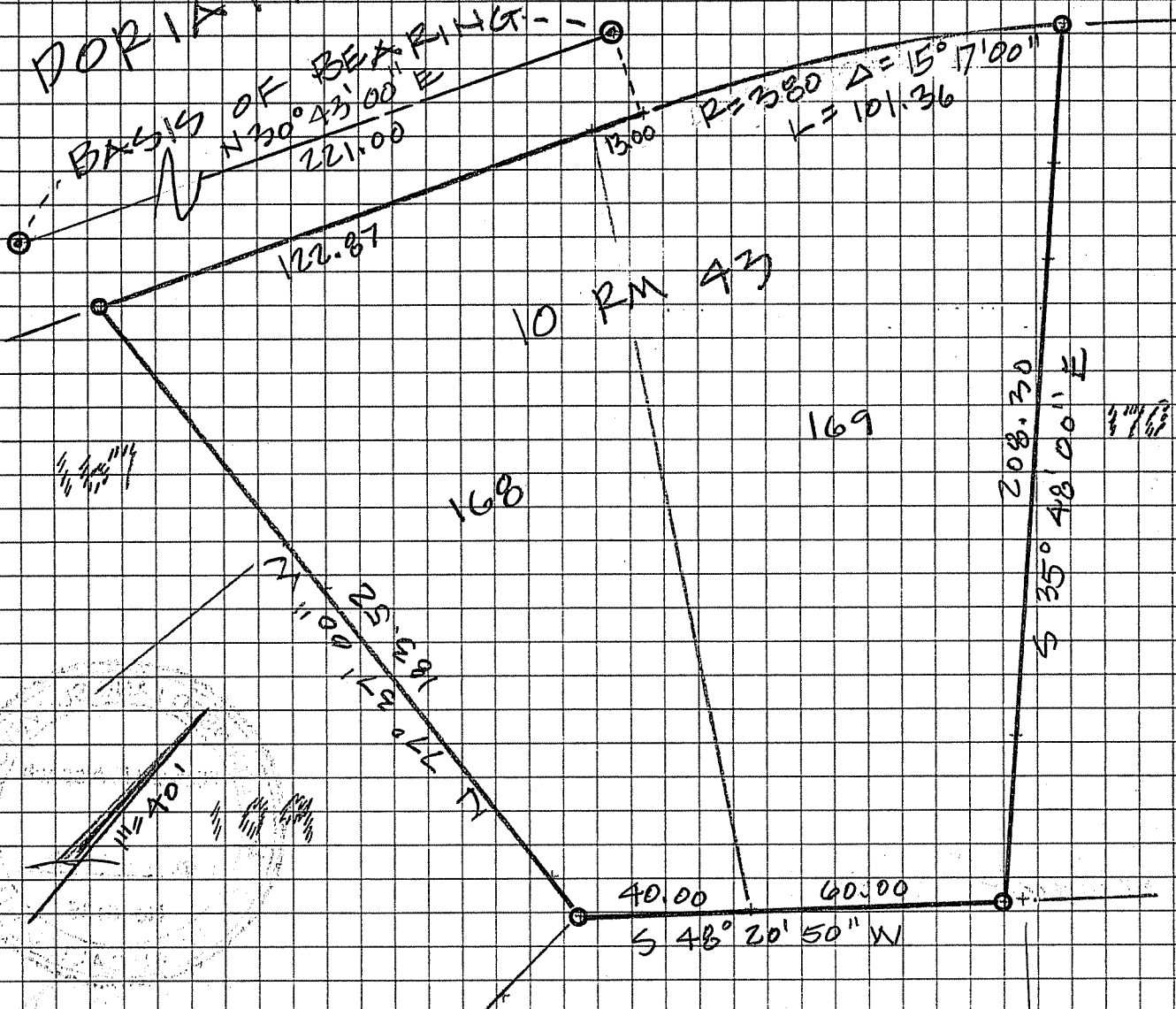
County Surveyor's Comment \_\_\_\_\_

WAY

CC-PLOT output, date: 05-04-1994, time: 12:55:12 PM, FILE: LORNG204.CCC

PLOT SCALE: 1 inch = 40 feet  
NORTH IS ROTATED 40.0000 DEGREES CLOCKWISE.

DORIAN



POINTS OFF PAPER: NONE

LEGEND

- SET 3/4" IRON PIPE & PLUG L.S. 6135
- ⊙ FOUND STD. STREET MONUMENT, PIN IN CONCRETE