

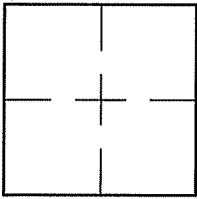
CORNER RECORD

Document Number A.P.# 016-111-14

City of SAN RAFAEL

County of MARIN, California

Brief Legal Description LOT 182 PER 10 R.M. 43



CORNER TYPE                      COORDINATES (Optional)

Government Corner       Control

Meander                       Property

Rancho                       Other

Date of Survey 8/26/10

N. \_\_\_\_\_  
 E. \_\_\_\_\_  
 Zone \_\_\_\_\_ NAD27       NAD83   
 NAD83 Epoch \_\_\_\_\_  
 Elev. \_\_\_\_\_  
 Vert. Datum:      NGVD29       NAVD88   
 Meas. Units:      Metric       Imperial

Corner-    Left as found     Found and tagged     Established     Reestablished     Rebuilt

Identification and type of corner found: Evidence used to identify or procedure used to establish or reestablish the corner:  
REESTABLISHED LOT 182 USING THE STREET MONUMENTS AS SHOWN ON 10 R.M. 43 AND AS SHOWN ON SHEET 2.

A description of the physical condition of the monument as found and as set or reset: SEE SHEET 2.

SURVEYOR'S STATEMENT

This Corner Record was prepared by me or under my direction in conformance with

the Land Surveyor's Act on AUGUST 30, 2010.

Signed *Lawrence P. Doyle*      P.L.S. or R.C.E. No. P.L.S. 4694



COUNTY SURVEYOR'S STATEMENT

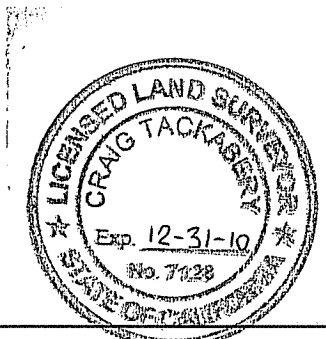
This Corner Record was received SEPTEMBER 27, 2010

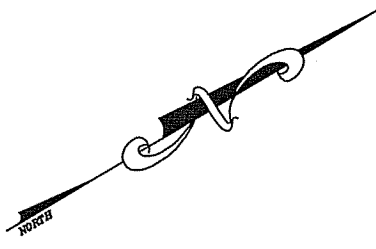
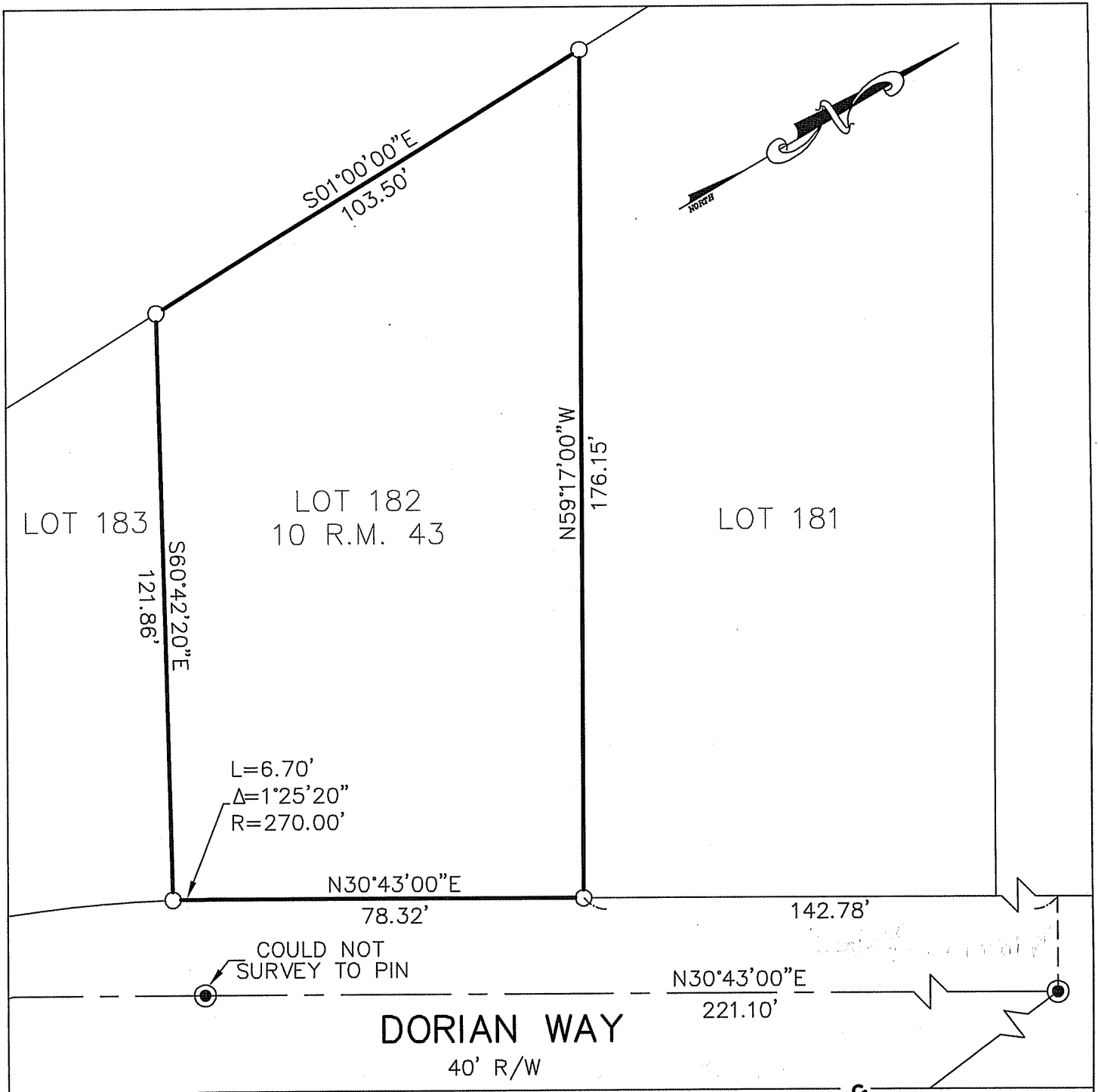
and examined and filed OCTOBER 21, 2010

Signed *Craig Tackabery*      P.L.S. or R.C.E. No. 7128

Title COUNTY SURVEYOR

County Surveyor's Comment \_\_\_\_\_





L=6.70'  
 $\Delta=1^{\circ}25'20''$   
 R=270.00'

COULD NOT SURVEY TO PIN

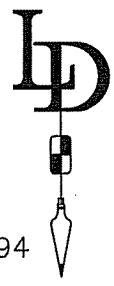
**BASIS OF BEARING**  
 $S02^{\circ}17'09''E$   
 412.53'  
 MONUMENT AT KINROSS DR.

**BASIS OF BEARING**

THE BASIS OF BEARING FOR THIS SURVEY IS BETWEEN STREET MONUMENTS PER 10 R.M. 43

**LEGEND**

- FOUND STREET MONUMENT
- SET 3/4" PIPE & PLUG, L.S. 4694



<b>CORNER RECORD</b> LOT 182, 10 R.M. 43 SAN RAFAEL MARIN COUNTY CALIFORNIA		
SCALE: 1" = 30'	<b>LAWRENCE P. DOYLE</b> LAND SURVEYOR/CIVIL ENGINEER 100 HELENS LANE MILL VALLEY CA 94941 (415-388-9585)	DRAWN BY:
DATE: 8/26/10		SHEET 2 OF 2
		DRAWING NO. 2045-10