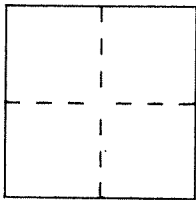


CORNER RECORD

Document Number 16-111-09  
City of SAN RAFAEL County of MARIN, California

Brief Legal Description LOT 177 MAP OF LOCH LOMOND UNIT 6 (10 MAPS 43)



CORNER TYPE

Government Corner  Control   
Meander  Property   
Rancho  Other   
Date of Survey JULY 31, 2000

COORDINATES  
(Optional)

N. \_\_\_\_\_  
E. \_\_\_\_\_  
Zone \_\_\_\_\_ Datum \_\_\_\_\_  
Elev. \_\_\_\_\_

Corner — Left as found  Found and tagged  Established  Reestablished  Rebuilt

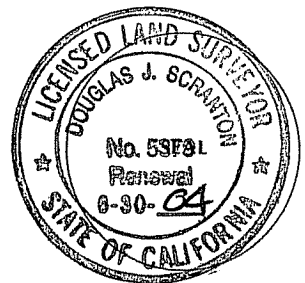
Identification and type of corner found: Evidence used to identify or procedure used to establish or reestablish the corner:  
REESTABLISH THE ANGLE POINT ON THE NORTHERLY LOT LINE  
OF LOT 178 (ALSO BEING THE SOUTHERLY LINE OF LOT 177)  
OF MAP OF LOCH LOMOND, UNIT 6 (10 MAPS 43) FROM  
EXISTING STREET MONUMENTS OPPOSITE LOT 177 ON  
DORIAN WAY ~ SEE SKETCH ON REVERSE SIDE

A description of the physical condition of the monument as found and as set or reset:  
SET 1/2" REBAR WITH PLS 5379 YELLOW PLASTIC CAP  
AFFIXED TO TOP OF REBAR / PIPE DRIVEN FLUSH  
WITH SURROUNDING GRADE

SURVEYOR'S STATEMENT

This Corner Record was prepared by me or under my direction in conformance with the Land Surveyors' Act on AUG. 2, 2000 19\_\_.

Signed Douglas J. Scranton L.S. or R.C.E. Number LS 5379  
RENEW 6.30.04



COUNTY SURVEYOR'S STATEMENT

This Corner Record was received AUG. 3, 2000 19\_\_ and examined and filed AUG 3, 2000 19\_\_.

Signed John M. Wooley Title DEPUTY



County Surveyor's Comment \_\_\_\_\_  
\_\_\_\_\_  
\_\_\_\_\_

PREPARED BY: DJ SCRANTON SURVEYING 845 OLIVE AVE # 208 NOVATO, CA 94945

MAP OF LOCH LOMOND  
Unit 6 (10 M 43)

ALL DISTANCES  
GIVEN IN FEET  
& DECIMALS  
THEREOF

EASEMENTS NOT SHOWN

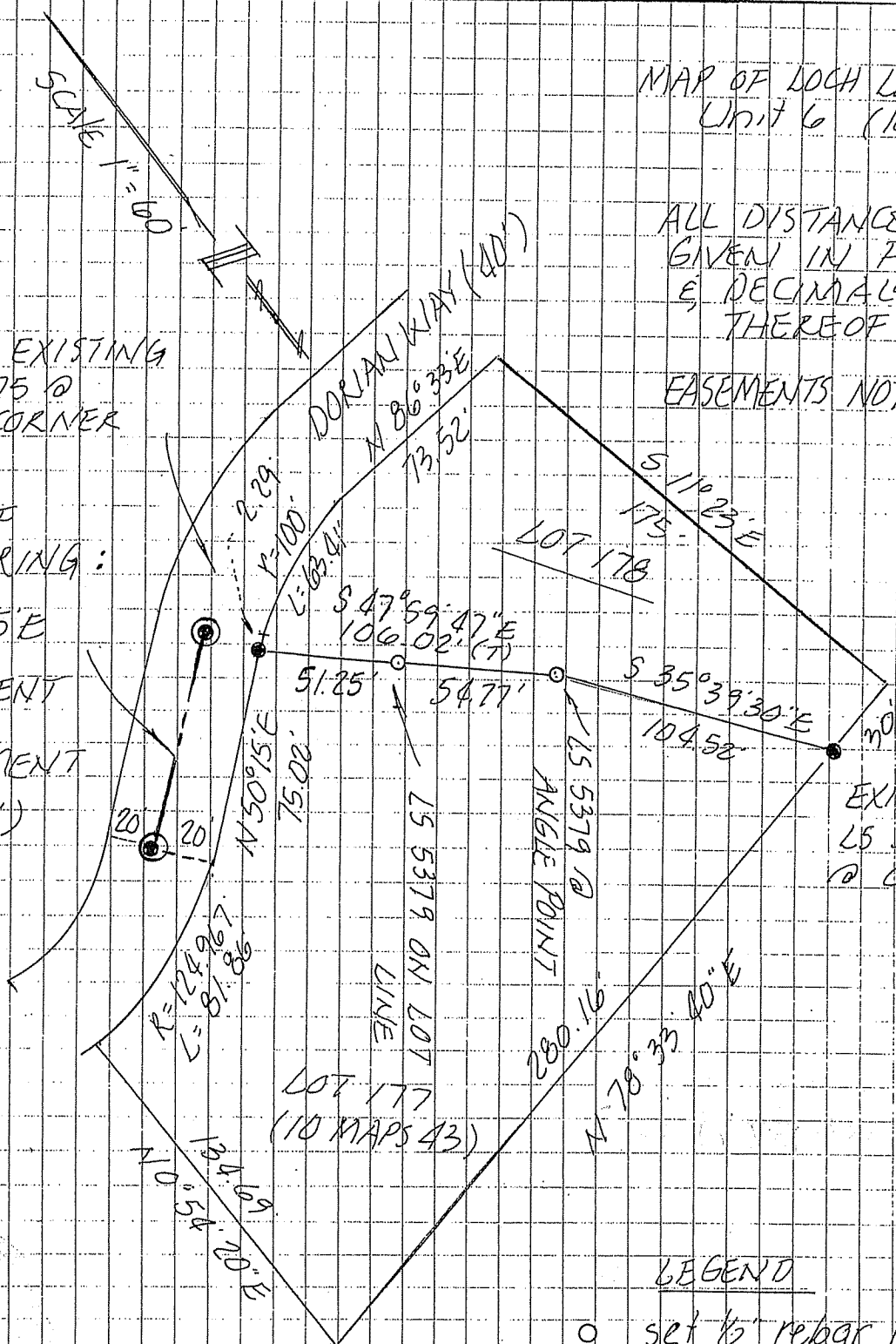
SCALE 1" = 80'

NOTE: EXISTING  
LS 3775 @  
LOT CORNER

BASIS OF  
BEARING:

N 50° 15' E

MONUMENT  
TO  
MONUMENT  
(77.31')



EXISTING  
LS 3775  
@ CORNER

LEGEND

- set 1/2" rebar with  
PLS CAP 5379
- LS 3775 (EXISTING)
- ⊙ STANDARD STREET  
MONUMENT
- (T) TOTAL

SITUS: 28 DORIAN WAY  
SAN RAFAEL

APN 16-111-08