



JERRICO ASSOCIATES

SUITE 27
77 MARK DRIVE
SAN RAFAEL, CA 94903

7090

CORNER RECORD

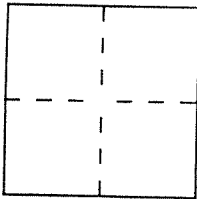
Document Number 16-101-16

City of San Rafael

County of Marin

California

Brief Legal Description Lot 42 and Lot B Villa Real Unit 1 8 RM 66



CORNER TYPE

Government Corner Control
 Meander Property
 Rancho Other
 Date of Survey August 30 1994

COORDINATES (Optional)

N. _____
 E. _____
 Zone _____ Datum _____
 Elev. _____

Corner — Left as found Found and tagged Established Reestablished Rebuilt

Identification and type of corner found: Evidence used to identify or procedure used to establish or reestablish the corner:
Monuments from Las Casas Ave and Junipero Serra Ave as found in the field.

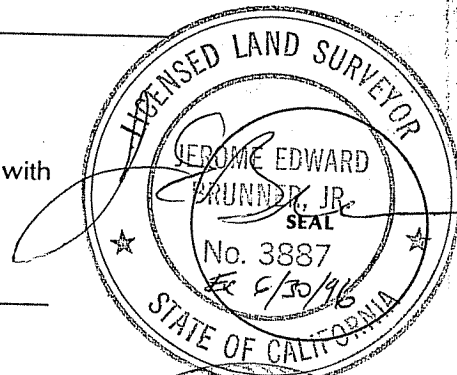
A description of the physical condition of the monument as found and as set or reset: _____

- ③ Found IP and plastic RCE 12094
- ④ " " " " " " " " " "
- ⑦ " " " " brass " " "
- ① Point falls in conc drive (not set)
- ② Set spike nail

SURVEYOR'S STATEMENT

This Corner Record was prepared by me or under my direction in conformance with the Land Surveyors' Act on August 30 1994.

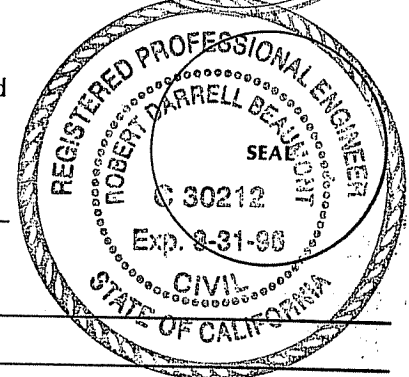
Signed [Signature] L.S. or R.C.E. Number LS 3887



COUNTY SURVEYOR'S STATEMENT

This Corner Record was received October 4 1994 and examined and filed 10-4 1994.

Signed [Signature] Title [Signature]



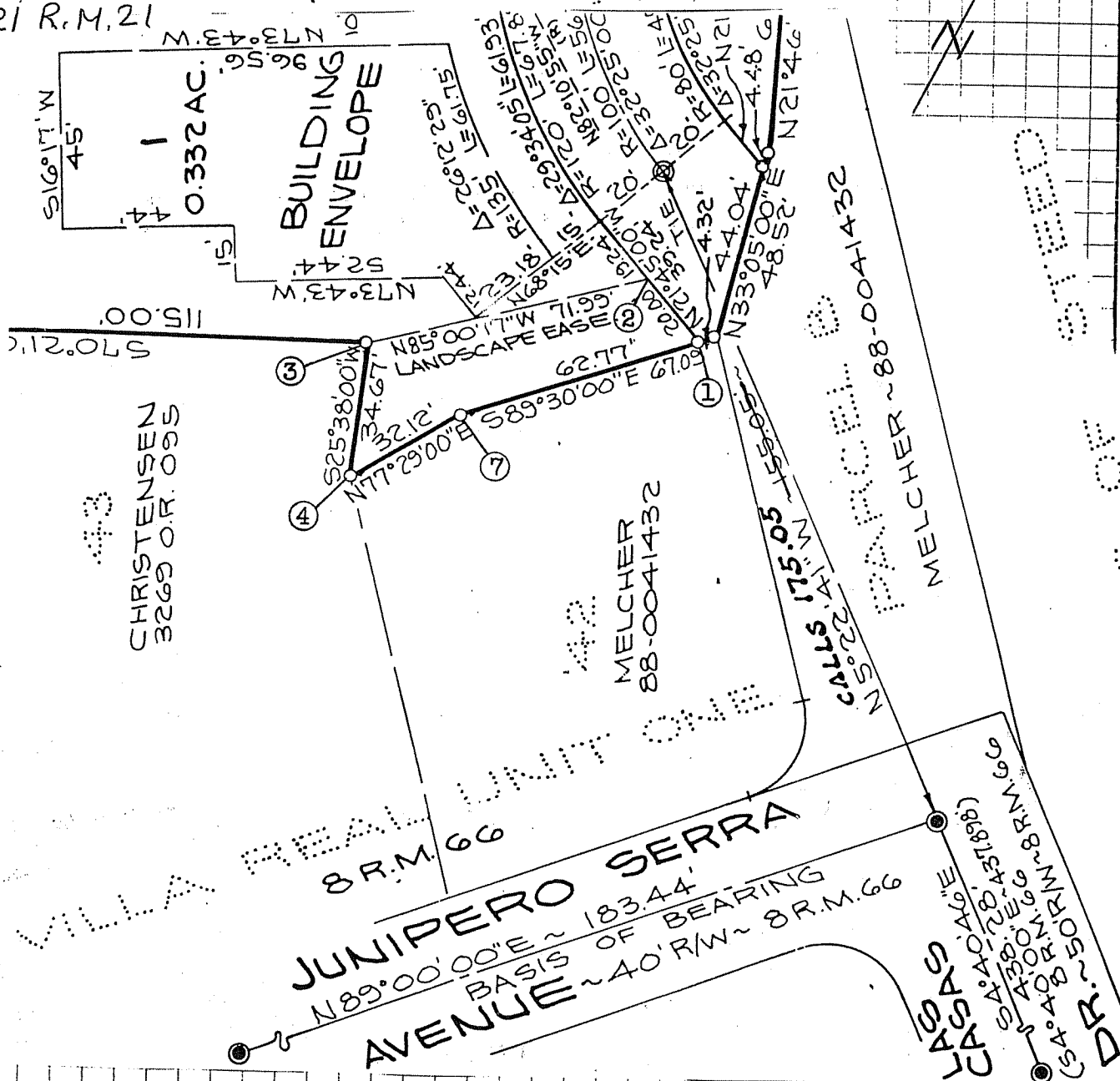
County Surveyor's Comment _____

MAP OF

LOCH LOMOND UNIT 10

SAN RAFAEL, MARIN COUNTY, CALIFORNIA

21 R.M. 21



43
CHRISTENSEN
3269 OR. 005

BUILDING
ENVELOPE

MELCHER
88-0041432

PANZA ~88-0041432

JUNIPERO SERRA
AVENUE

N89°00'00"E ~ 183.44'
BASIS OF BEARING
~ 40' R/W ~ 8 R.M. 66

CALLE 175.05
N5°22'41" W 155.95'

PLAN OF SUBDIVISION
OF