

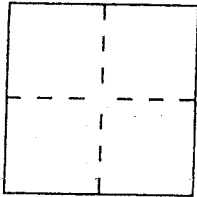
CORNER RECORD

Document Number 016-091-17

City of San Rafael

County of Marin, California

Brief Legal Description Lot 29 of 11 RM 44



CORNER TYPE

Government Corner Control
Meander Property
Rancho Other
Date of Survey _____

COORDINATES
(Optional)

N. _____
E. _____
Zone _____ Datum _____
Elev. _____

Corner — Left as found Found and tagged Established Reestablished Rebuilt

Identification and type of corner found: Evidence used to identify or procedure used to establish or reestablish the corner:

Found Standard Street Monuments, and other
corners as described on Map Page.

A description of the physical condition of the monument as found and as set or reset:

Set 1/2" iron rebar with cap embossed LS 5290

SURVEYOR'S STATEMENT

This Corner Record was prepared by me or under my direction in conformance with the Land Surveyors' Act on 4/15/14

Signed David Harp L.S. or R.C.E. Number LS 5290



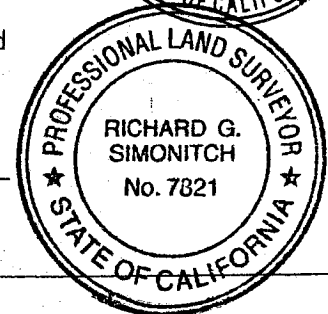
COUNTY SURVEYOR'S STATEMENT

This Corner Record was received APR. 21, 2014 and examined

and filed MAY 2, 2014

Signed Richard G. Simonitch Title DEPUTY

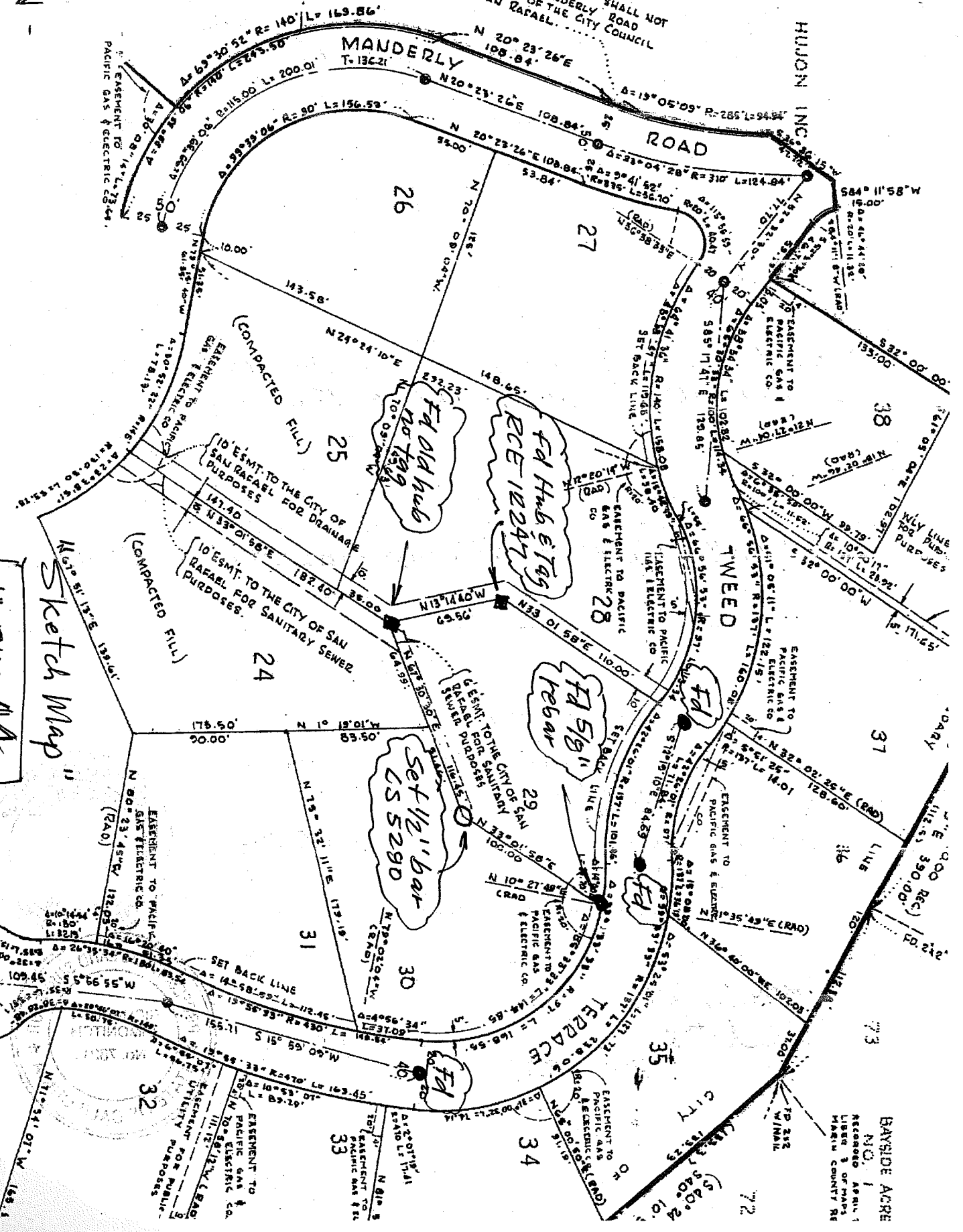
PLS 7821



County Surveyor's Comment _____

THIS PARCEL SHALL NOT
ACCESS TO MANDERLY ROAD
BE APPROVED BY THE CITY COUNCIL
CITY OF SAN RAFAEL.

OF HUON INC



1" = 50'

Sketch Map
11 RM 44
not to scale

BANBIDE ACRE
NO. 1
Recorded April 1
1923
LIBERTY & ORMAN
MARIN COUNTY RE