

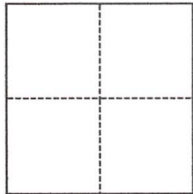
CORNER RECORD

Agency Index DPW#21-035

Document Number 016-091-12&13

City of San Rafael County of Marin, California

Brief Legal Description Lots 24 & 25 of Loch Lomond Highlands, Unit 1, 11 RM 44, MCR



CORNER TYPE

- Government Corner
- Meander
- Rancho
- Control
- Property
- Other

Date of Survey February 26, 2021

COORDINATES (Optional)

N. _____ E. _____

Elevation _____

Units Metric U.S. Survey Foot

Horizontal Datum _____

Zone _____ Epoch Date _____

Vertical Datum _____

Complies with Public Resources Code §§8801-8819

Complies with Public Resources Code §§8890-8902

PLS Act Ref.: 8765(d) 8771 8773 Other:

Corner/Monument: Left as found Established Rebuilt Pre-Construction

Found and tagged Reestablished Referenced Post-Construction

Narrative of corner identified and monument as found, set, reset, replaced, or removed:

See sheet #2 for description(s):

Found monuments along centerline of Manderly Road, set 5/8-inch rebar with yellow cap as shown on Page 2.

SURVEYOR'S STATEMENT

This Corner Record was prepared by me or under my direction in conformance with

the Professional Land Surveyors' Act on March 1, 2021

Signed [Signature] P.L.S. or R.C.E. No. 7950



COUNTY SURVEYOR'S STATEMENT

This Corner Record was received 03/09/2021

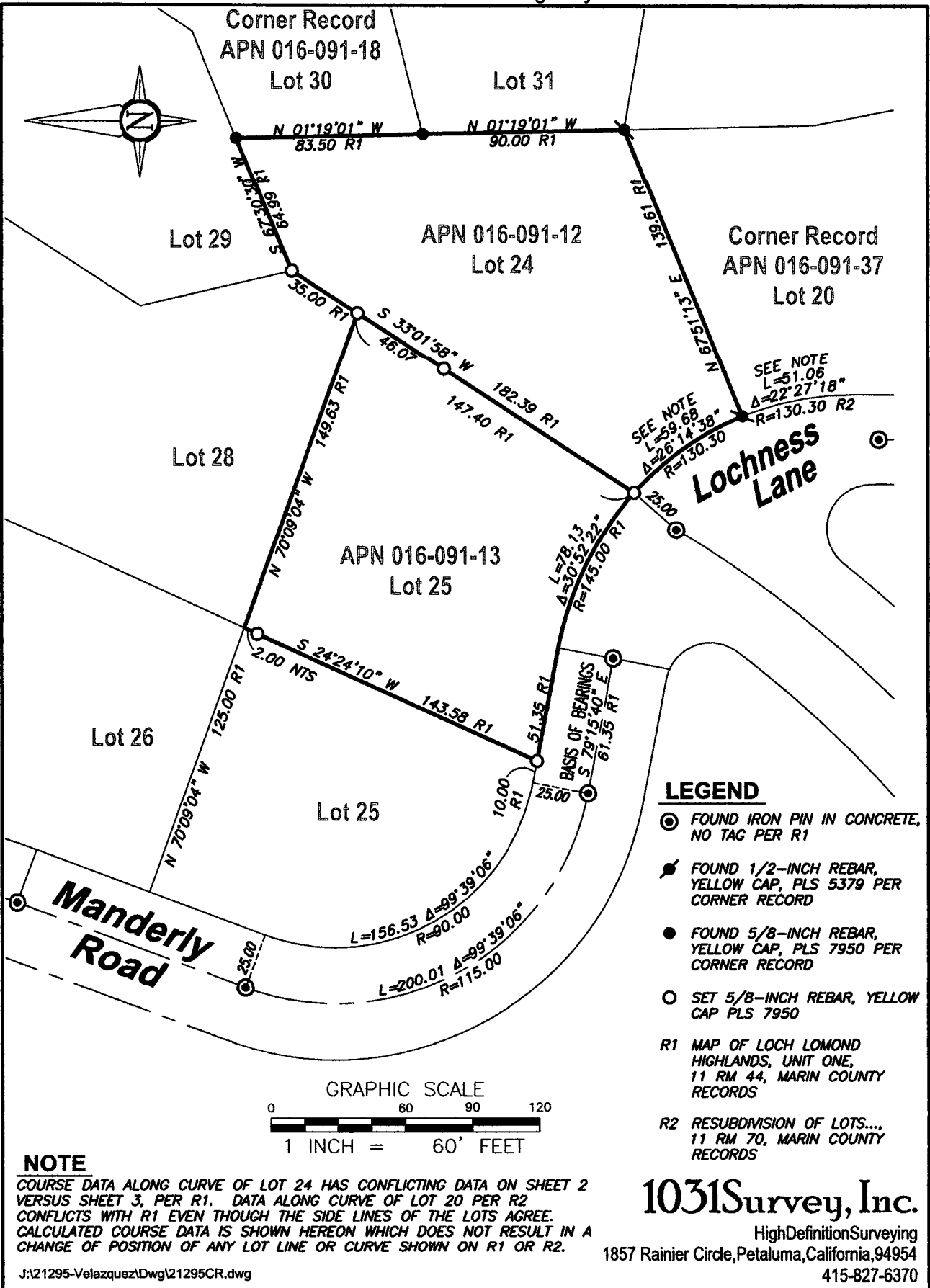
and examined and filed 06/10/2021

Signed T.W. Park P.L.S. or R.C.E. No. 8176

Title COUNTY SURVEYOR

County Surveyor's Comment





NOTE

COURSE DATA ALONG CURVE OF LOT 24 HAS CONFLICTING DATA ON SHEET 2 VERSUS SHEET 3, PER R1. DATA ALONG CURVE OF LOT 20 PER R2 CONFLICTS WITH R1 EVEN THOUGH THE SIDE LINES OF THE LOTS AGREE. CALCULATED COURSE DATA IS SHOWN HEREON WHICH DOES NOT RESULT IN A CHANGE OF POSITION OF ANY LOT LINE OR CURVE SHOWN ON R1 OR R2.

J:\21295-Velazquez\Dwg\21295CR.dwg

LEGEND

- ⊙ FOUND IRON PIN IN CONCRETE, NO TAG PER R1
- ⦿ FOUND 1/2-INCH REBAR, YELLOW CAP, PLS 5379 PER CORNER RECORD
- FOUND 5/8-INCH REBAR, YELLOW CAP, PLS 7950 PER CORNER RECORD
- SET 5/8-INCH REBAR, YELLOW CAP PLS 7950
- R1 MAP OF LOCH LOMOND HIGHLANDS, UNIT ONE, 11 RM 44, MARIN COUNTY RECORDS
- R2 RESUBDIVISION OF LOTS..., 11 RM 70, MARIN COUNTY RECORDS

1031Survey, Inc.

HighDefinitionSurveying
1857 Rainier Circle, Petaluma, California, 94954
415-827-6370