

# CORNER RECORD

Agency Index CR24-003

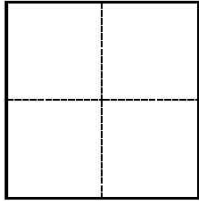
Document Number 016-064-68

City of SAN RAFAEL County of MARIN, California

Brief Legal Description LOT A AS SHOWN ON THAT RECORD OF SURVEY - LOT LINE ADJUSTMENT  
2005 MAPS 152, MARIN COUNTY RECORDS

### CORNER TYPE

### COORDINATES (Optional)



- Government Corner
- Meander
- Rancho
- Control
- Property
- Other

Date of Survey 11/20/2023

N. \_\_\_\_\_ E. \_\_\_\_\_

Elevation \_\_\_\_\_

Units  Metric  U.S. Survey Foot

Horizontal Datum \_\_\_\_\_

Zone \_\_\_\_\_ Epoch Date \_\_\_\_\_

Vertical Datum \_\_\_\_\_

Complies with Public Resources Code §§8801-8819

Complies with Public Resources Code §§8890-8902

PLS Act Ref.:  8765(d)  8771  8773  Other:

Corner/Monument:  Left as found  Established  Rebuilt  Pre-Construction

Found and tagged  Reestablished  Referenced  Post-Construction

Narrative of corner identified and monument as found, set, reset, replaced, or removed:

See sheet #2 for description(s):

FOUND MONUMENTS PER THE RECORD OF SURVEY - LOT LINE ADJUSTMENT, RECORDED IN BOOK 2005 OF MAPS, AT PAGE 152, MARIN COUNTY RECORDS. MONUMENTS ON THE SOUTHWEST BOUNDARY LINE WERE SEARCHED FOR, BUT NOT FOUND. SET 1/2" IRON PIPES WITH PLASTIC CAPS STAMPED P.L.S. 8155 AT RECORD LOCATIONS. SEE SHEET #2 FOR MORE DETAILS.

### SURVEYOR'S STATEMENT

This Corner Record was prepared by me or under my direction in conformance with the Professional Land Surveyors' Act on 1/22/2024.

Signed *Steven J. Klein* P.L.S. or R.C.E. No. 8155



### COUNTY SURVEYOR'S STATEMENT

This Corner Record was received January 22, 2024

and examined and filed January 22, 2024.








Signed *T.W. Park* P.L.S.            No. 8176

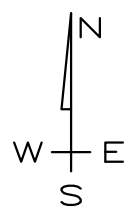
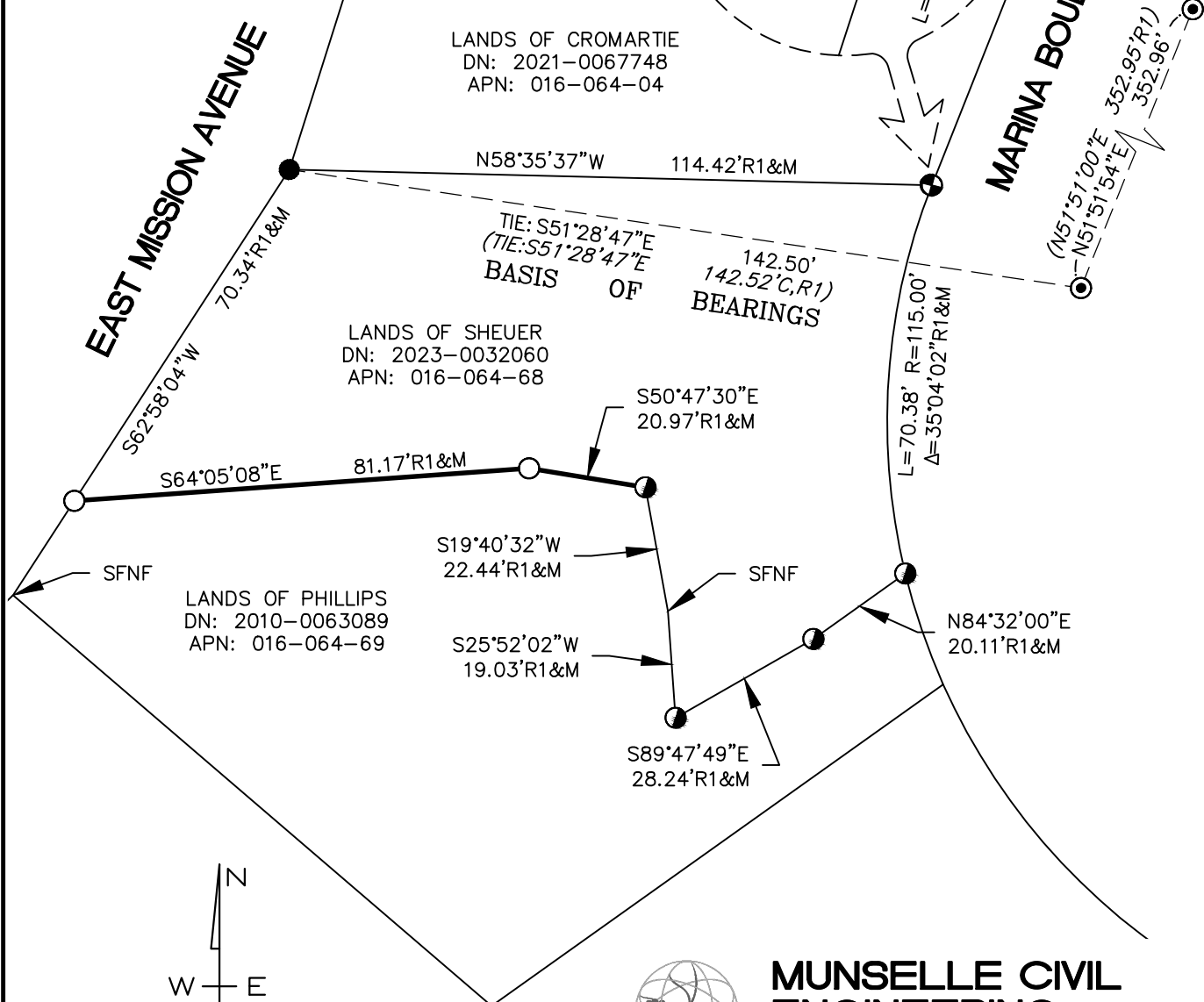
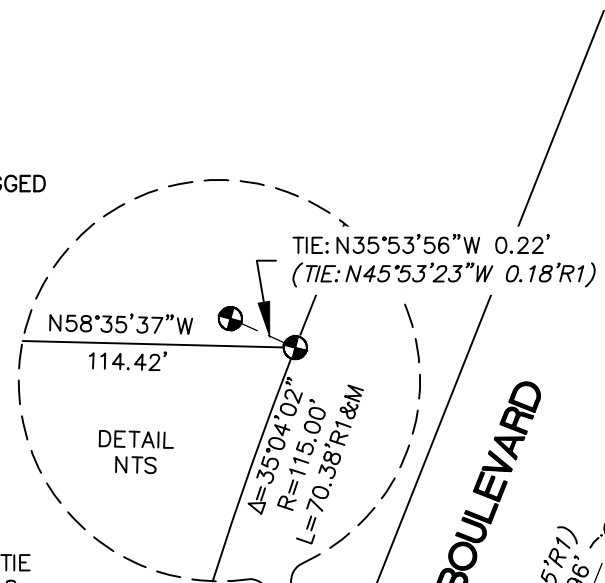
Title County Surveyor

County Surveyor's Comment

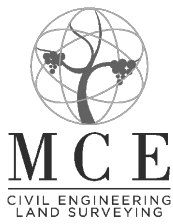
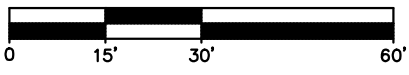


**LEGEND**

-  BOUNDARY LINE
-  ADJOINING BOUNDARY LINE
-  SET 1/2" IRON PIPE, WITH PLASTIC CAP, STAMPED PLS 8155
-  FOUND 1/2" IRON PIPE, OPEN, NOT TAGGED
-  FOUND 3/4" IRON PIPE WITH PLASTIC CAP, STAMPED R.C.E. 30465
-  FOUND 2" BRASS DISK WITH PUNCH, IN MONUMENT WELL
-  FOUND 1" IRON BAR, NOT TAGGED
- DN DOCUMENT NUMBER
- SFNF SEARCHED FOR, NOT FOUND
- R1 RECORD OF SURVEY—LOT LINE ADJUSTMENT 2005 MAPS 152, M.C.R.



SCALE: 1" = 30'



**MUNSELLE CIVIL ENGINEERING**  
CIVIL ENGINEERING ♦ LAND PLANNING  
513 CENTER STREET  
HEALDSBURG, CA 95448  
(707) 395-0968