

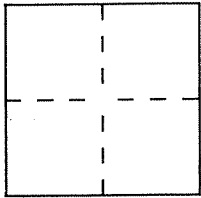
CORNER RECORD

Document Number 16-054-07

City of SAN RAFAEL

County of MARIN, California

Brief Legal Description LANDS OF KEATON 1436 O.R. 181 APN# 16-054-07



CORNER TYPE

Government Corner Control
Meander Property
Rancho Other
Date of Survey 3-25-94

COORDINATES (Optional)

N. _____
E. _____
Zone _____ Datum _____
Elev. _____

Corner — Left as found Found and tagged Established Reestablished Rebuilt

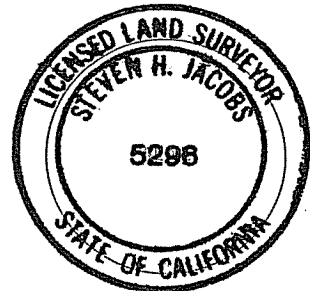
Identification and type of corner found: Evidence used to identify or procedure used to establish or reestablish the corner:
RECOVERED MONUMENTATION PER 21 OS 81 AS SHOWN ON SKETCH.
NO MATERIAL DISCREPANCY DISCOVERED; RESET POINTS SHOWN
PER ORIGINAL RECORD OF SURVEY.

A description of the physical condition of the monument as found and as set or reset:
SET (3) 3/4" IRON PIPES TAGGED P.L.S. 5296 AS SHOWN ON
SKETCH AND SET (1) NAIL & TAG P.L.S. 5296 AT SOUTHEAST
CORNER OF PARCEL.

SURVEYOR'S STATEMENT

This Corner Record was prepared by me or under my direction in conformance with the Land Surveyors' Act on APRIL 1, 1994.

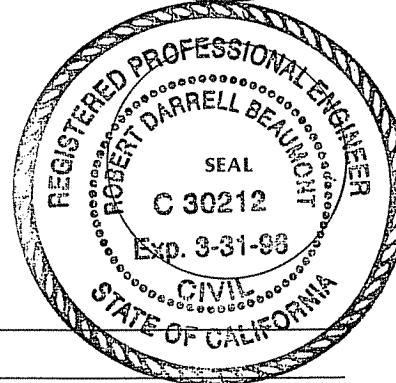
Signed [Signature] L.S. or R.C.E. Number P.L.S. 5296



COUNTY SURVEYOR'S STATEMENT

This Corner Record was received April 21 1994 and examined and filed 4-21 1994.

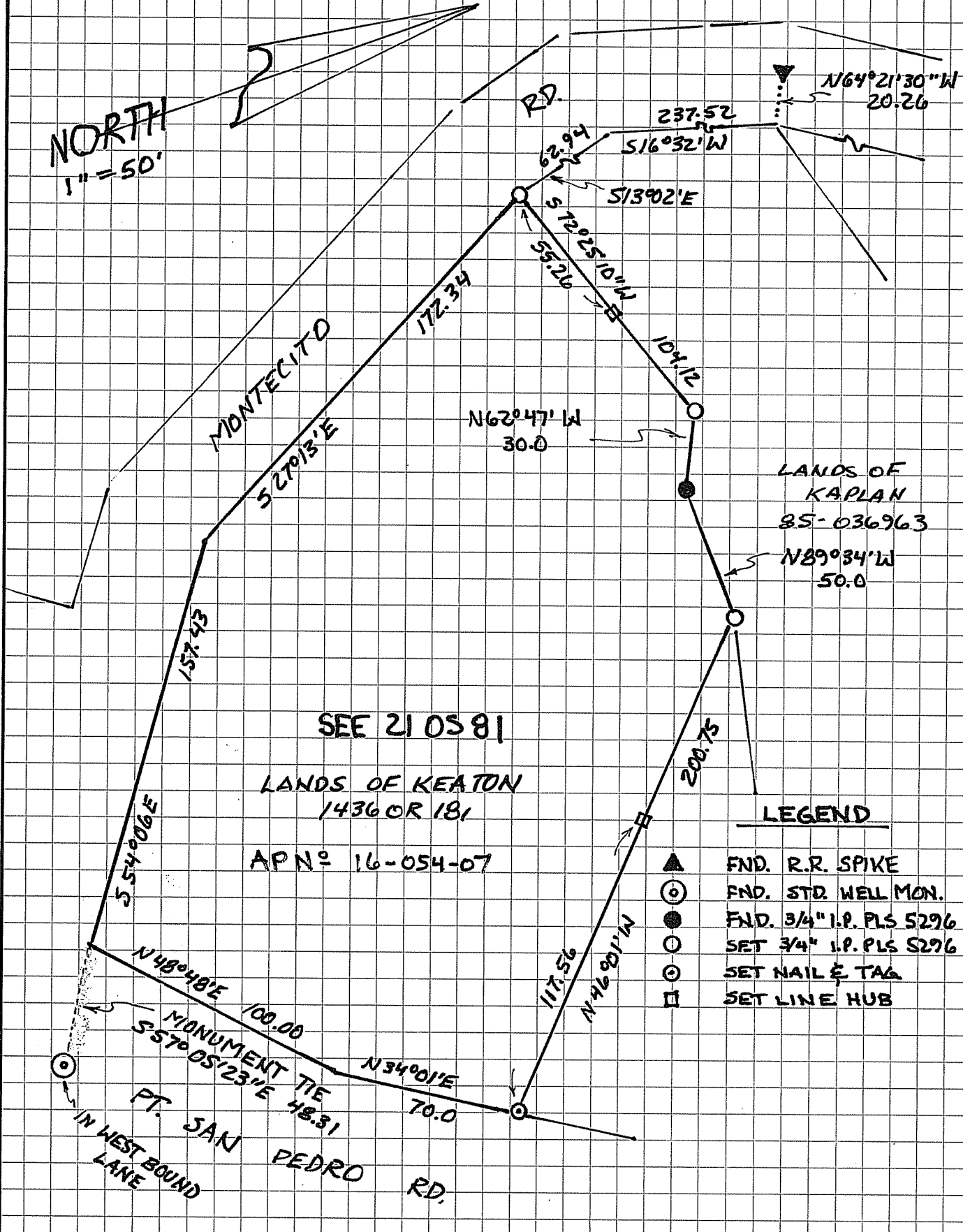
Signed [Signature] Title Des



County Surveyor's Comment _____

BASIS OF BEARING: FOUND R.R. SPIKE TO FND. STD. WELL MON.
 AS $S20^{\circ}23'40''E$ 607.70 CALC'D PER 21 05 81

NORTH
 1" = 50'



LEGEND

- ▲ FND. R.R. SPIKE
- ⊙ FND. STD. WELL MON.
- FND. 3/4" I.P. PLS 5296
- SET 3/4" I.P. PLS 5296
- ⊙ SET NAIL & TAG
- SET LINE HUB