

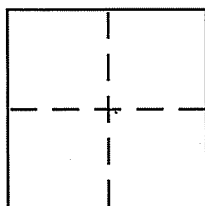
CORNER RECORD

Document Number APN. 016-041-28

City of SAN RAFAEL

County of MARIN, California

Brief Legal Description 110 DEER PARK AVE, SAN RAFAEL ~ PCL.'B', 2 0.5.166



CORNER TYPE

Government Corner Control
 Meander Property
 Rancho Other
 Date of Survey 11/25/2003

COORDINATES (Optional)

N. _____
 E. _____
 Zone _____ NAD27 NAD83
 NAD83 Epoch _____
 Elev. _____
 Vert. Datum: NGVD29 NAVD88
 Meas. Units: Metric Imperial

Corner - Left as found Found and tagged Established Reestablished Rebuilt

Identification and type of corner found: Evidence used to identify or procedure used to establish or reestablish the corner:

FOUND 3/4" IRON PIPES UNDISTURBED. USED FIELD SURVEY TO VERIFY LOCATION OF EXISTING MONUMENTS AND TO REESTABLISH PROPERTY CORNERS AND LINE POINTS AS INDICATED HEREON.

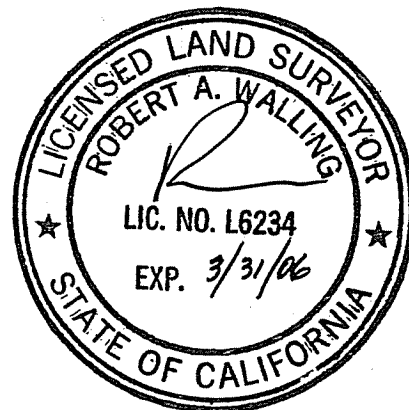
A description of the physical condition of the monument as found and as set or reset:

FOUND MONUMENTS WERE 3/4" IRON PIPES AND SETPOINTS WERE 1/2" IRON PINS WITH CAPS "LS6234".

SURVEYOR'S STATEMENT

This Corner Record was prepared by me or under my direction in conformance with the Land Surveyor's Act on NOVEMBER 25 2003

Signed [Signature] P.L.S or R.C.E. No. PLS6234



COUNTY SURVEYOR'S STATEMENT

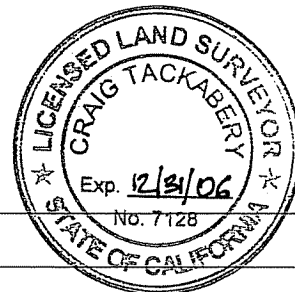
This Corner Record was received DECEMBER 12, 2003

and examined and filed DECEMBER 18, 2003

Signed [Signature] P.L.S or R.C.E. No. 7128

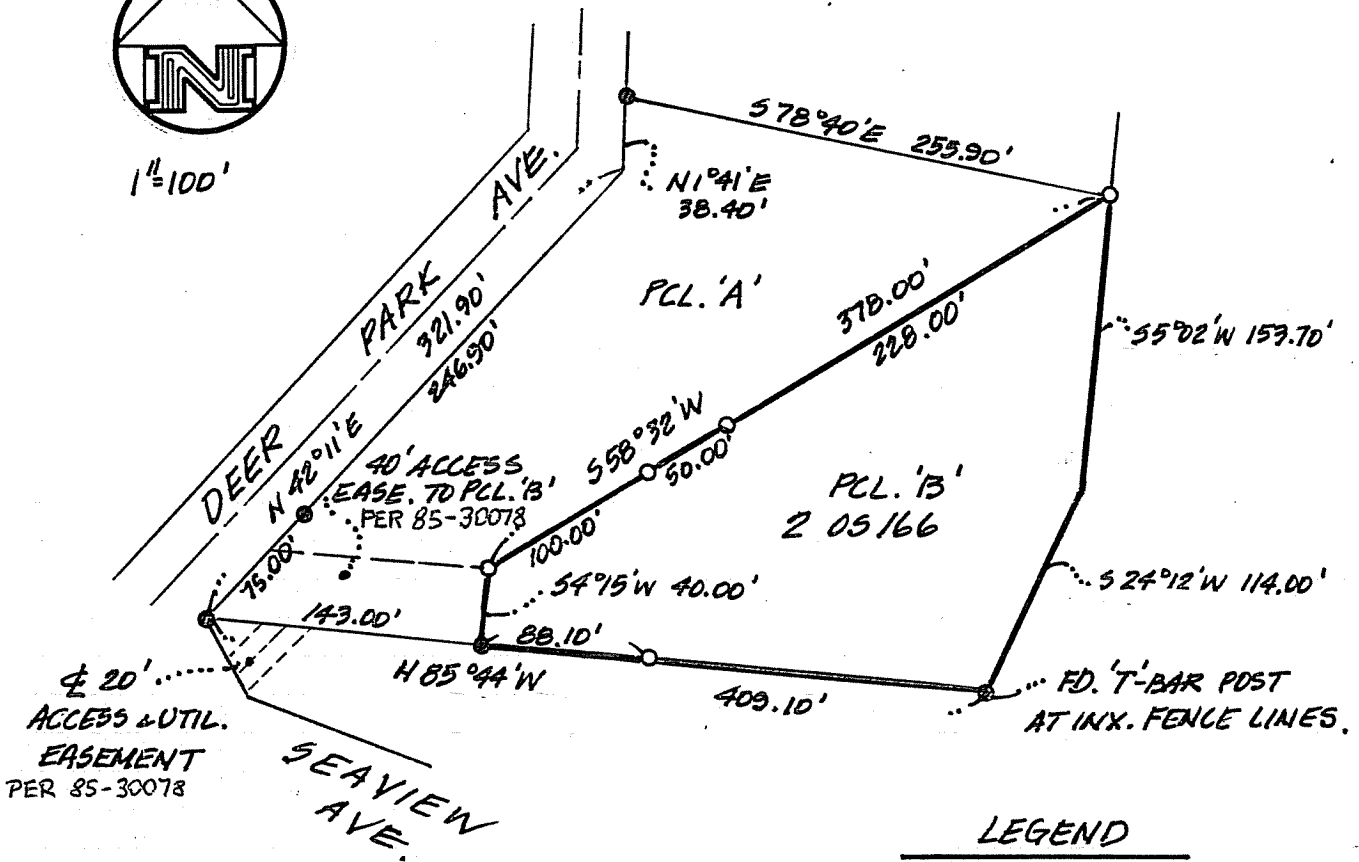
Title COUNTY SURVEYOR

County Surveyor's Comment _____





1"=100'



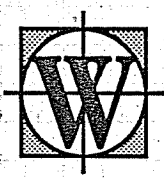
LEGEND

- FOUND 3/4" IP, TAG NOT-LEGIBLE UNLESS OTHERWISE NOTED.
- SET 1/2" PIN, CAP "LS6234"



SURVEY PLAT

LANDS OF FIEDELMAN
 DN. 85-030078, PCL. 'B' 205166
 APN. 016-041-28
 110' DEER PARK AVE., SAN RAFAEL
 MARIN CO., CALIFORNIA



BOB WALLING TECHNICAL SERVICES
 P.O. Box 1346 • Glen Ellen, CA 95442
 (707) 938-1593 (415) 382-1593

JH.103-40

12/03