

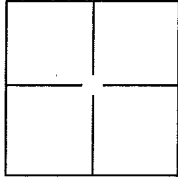
# CORNER RECORD

Document Number APN 016-041-08 AND 76

City of San Rafael

County of Marin, California

Brief Legal Description Portion of Lot 1 - 8 RM 64, Marin County Records



### CORNER TYPE

Government Corner  Control   
 Meander  Property   
 Rancho  Other

Date of Survey December 14, 2015

### COORDINATES(Optional)

N. \_\_\_\_\_  
 E. \_\_\_\_\_  
 Zone \_\_\_\_\_ NAD27  NAD83   
 NAD83 Epoch \_\_\_\_\_  
 Elev. \_\_\_\_\_  
 Vert. Datum: NGVD29  NADV88   
 Meas. Units: Metric  Imperial

Corner - Left as found  Found and tagged  Established  Reestablished  Rebuilt

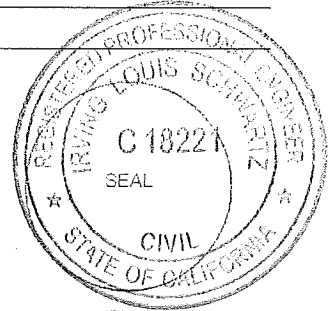
Identification and type of corner found: Evidence used to identify or procedure used to establish or reestablish the corner:  
Found (1) 1" Iron Pipe with Brass Nail and Tag, stamped "RE 3230", as shown on 2012 RS 121 and (1) 3/4" Iron Pipe with Wood Plug, no Tag, accepted as 3/4" Iron Pipe with Brass Nail and Tag, stamped "LS 2738" as shown on 2012 RS 121. Measured distance between of 415.44', calculated same as record. Held as Basis of Bearings for survey taken as N 77°24'47" W as shown on 2012 RS 121.

A description of the physical condition of the monument as found and as set or reset: Found record monuments(6) at corners per 2012 RS 121, and found record monuments (5) at corners per 2000 RS 135, and found record monuments (1) at corners per 8 RM 64, some monuments common to each map referenced, as shown on Exhibit A, Page 2 of 2. Set 3/4" iron pipe(1) with yellow cap stamped with "RCE 18221" at property corner as shown on Exhibit A, Page 2 of 2

### SURVEYOR'S STATEMENT

This Corner Record was prepared by me or under my direction in conformance with the Land Surveyor's Act on December 22, 2015.

Signed [Signature] P.L.S. or R.C.E. No.: 18221



### COUNTY SURVEYOR'S STATEMENT

This Corner Record was received December 23, 2015 and examined and filed FEBRUARY 4, 2016.

Signed [Signature] P.L.S. or R.C.E. No.: 7821

Title County Surveyor

County Surveyor's Comment \_\_\_\_\_

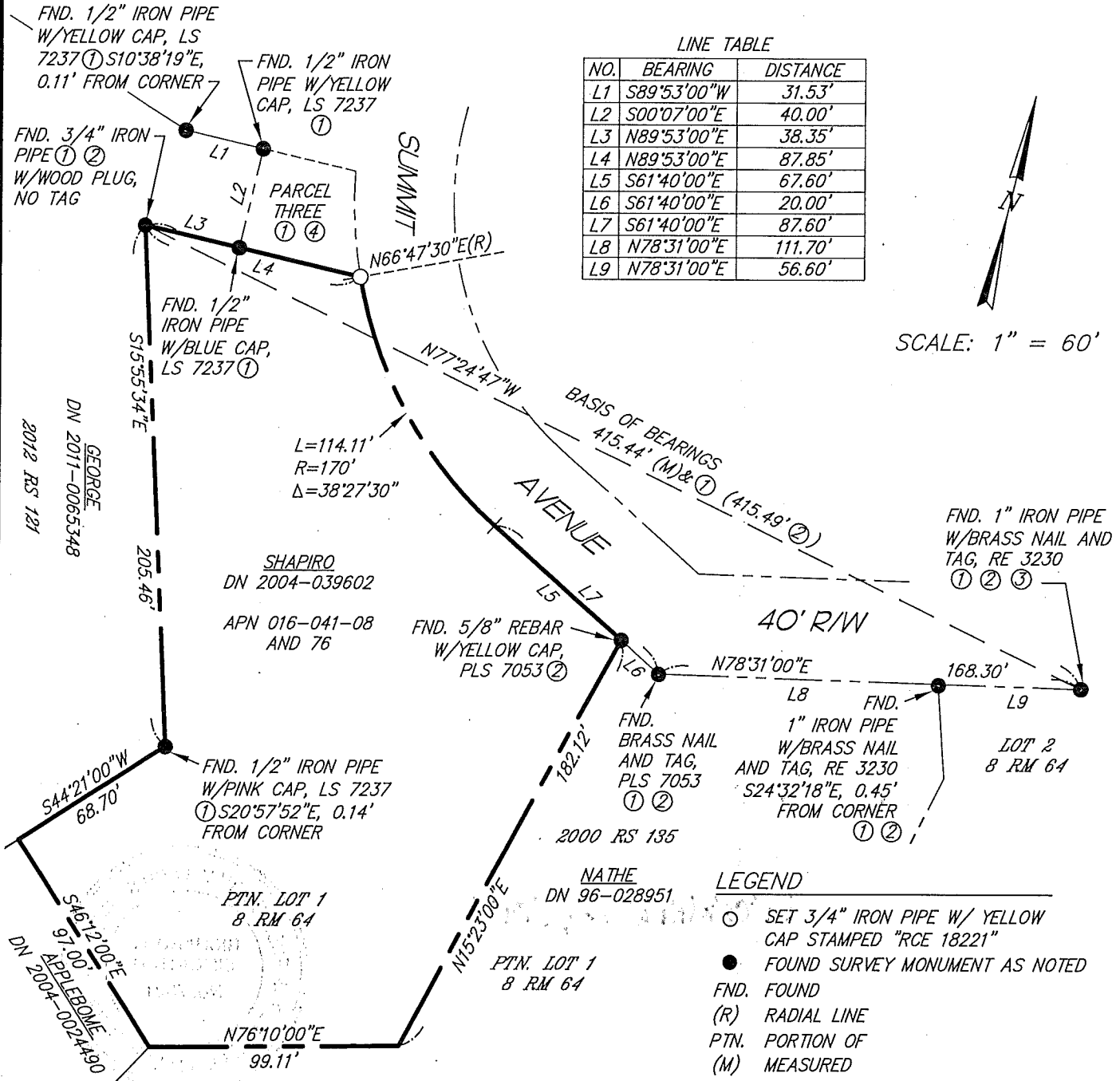




**ILS ASSOCIATES, INC.®**  
 Civil Engineering & Land Surveying  
 79 Galli Drive, Suite A  
 Novato, Ca 94949-5717  
 (415)883-9200 FAX (415)883-2763

DRAWN: GG	JOB NO: 9036
DATE: 12/22/2015	PAGE NO. 2 OF 2

# EXHIBIT A



**REFERENCES**

- ① RECORD OF SURVEY-2012 RS 121
- ② RECORD OF SURVEY-2000 RS 135
- ③ RECORD MAP-8 PM 64
- ④ GRANT DEED-DN 2011-0065348

**NOTES**

- 1. ALL DISTANCES ARE IN FEET OR DECIMALS THEREOF.
- 2. ALL REFERENCED MAPS AND DEEDS ARE FROM MARIN COUNTY RECORDS.