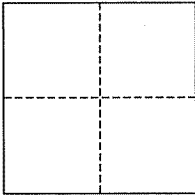


CORNER RECORD

City of San Rafael

Document Number AP# 016-032-10
County of Marin, California

Brief Legal Description Lot 25, 6 RM 62



CORNER TYPE

Government Corner Control
Meander Property
Rancho Other
Date of Survey October 22, 2006

COORDINATES (Optional)

N. _____
E. _____
Zone _____ NAD27 NAD83
NAD83 Epoch _____
Elev. _____
Vert. Datum: NGVD29 NAVD88
Meas. Units: Metric Imperial

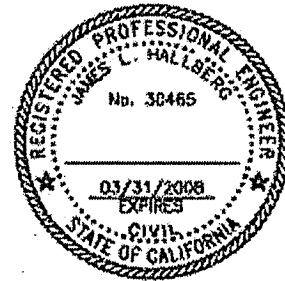
Corner- Left as found Found and tagged Established Reestablished Rebuilt

Identification and type of corner found: Evidence used to identify or procedure used to establish or reestablish the corner:
Found Standard Street Monuments on Margarita Drive and Moncada Way, per 6 RM 62.

A description of the physical condition of the monument as found and as set or reset: Set Iron Pipe & Plugs (RCE 20465), per 6 RM 62 as shown.

SURVEYOR'S STATEMENT

This corner Record was prepared by me or under my direction in conformance with the Land Surveyor's Act on January 8, 2007
Signed [Signature] P.L.S. or R.C.E. No. 30465



COUNTY SURVEYOR'S STATEMENT

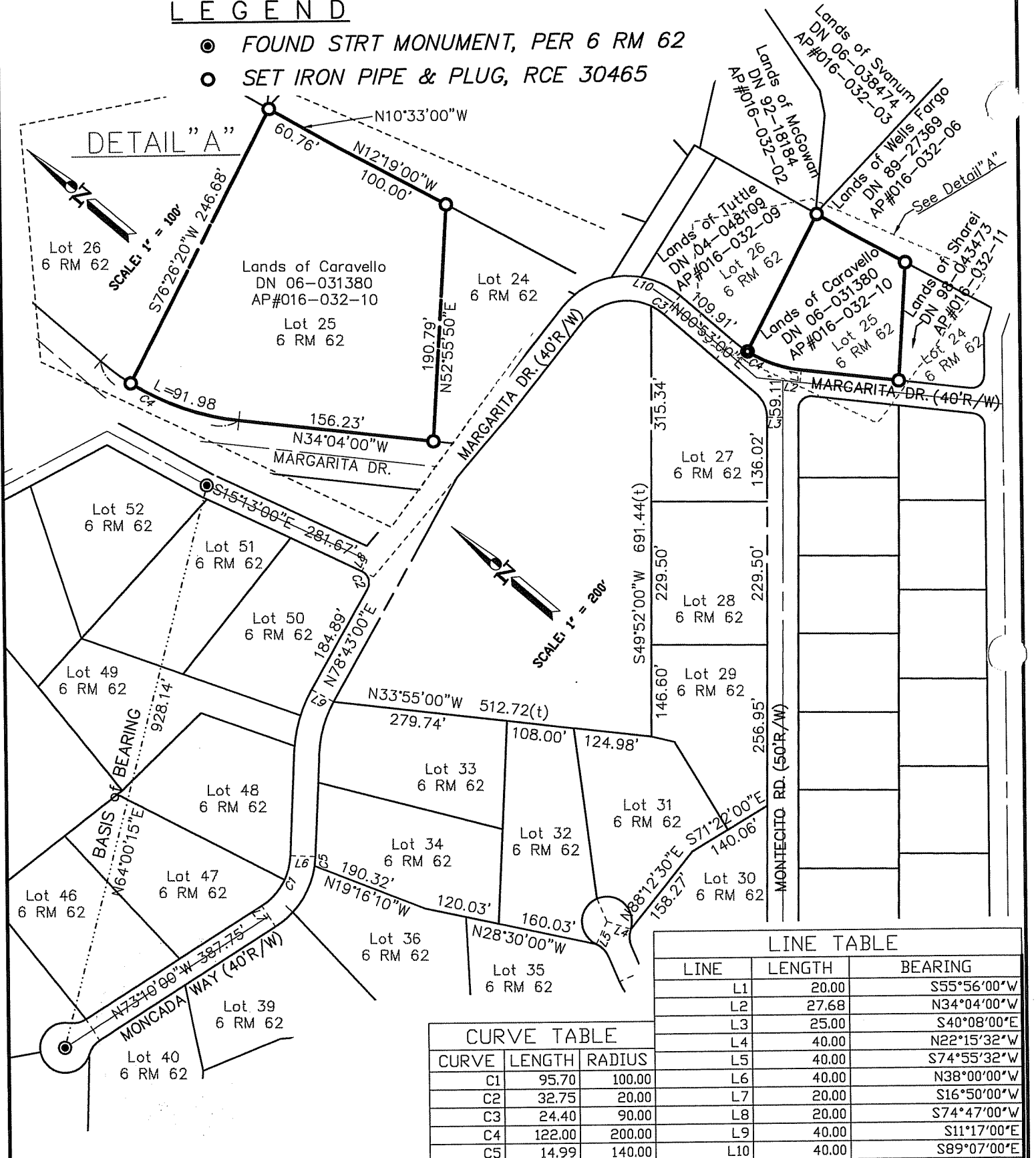
This Corner Record was received JANUARY 10, 2007
and examined and filed JANUARY 10, 2007
Signed [Signature] P.L.S. or R.C.E. No. 7128
Title COUNTY SURVEYOR



County Surveyor's Comment _____

LEGEND

- FOUND STRT MONUMENT, PER 6 RM 62
- SET IRON PIPE & PLUG, RCE 30465



CURVE	LENGTH	RADIUS
C1	95.70	100.00
C2	32.75	20.00
C3	24.40	90.00
C4	122.00	200.00
C5	14.99	140.00

LINE	LENGTH	BEARING
L1	20.00	S55°56'00"W
L2	27.68	N34°04'00"W
L3	25.00	S40°08'00"E
L4	40.00	N22°15'32"W
L5	40.00	S74°55'32"W
L6	40.00	N38°00'00"W
L7	20.00	S16°50'00"W
L8	20.00	S74°47'00"W
L9	40.00	S11°17'00"E
L10	40.00	S89°07'00"E

Note: All distances are in feet and decimals thereof.

SHEET 1 OF 1
 SCALE: 1" = 200' DESIGN: P.R.
 DATE: Jan. 2007 DRAWN: P.R.
 FILE: 2006-121 CHECKED: J.L.H.
 2006-121\DWG\ROS.DWG,COR-REC

J.L. ENGINEERING
 CIVIL ENGINEERS-LAND SURVEYORS
 1539 4th ST., SAN RAFAEL, CA. 94901 (415) 457-6647

Corner Record
 Lands of Caravello - 10 Margarita Dr.
 APN 016-032-10, San Rafael, Marin County, CA