

CORNER RECORD

Document Number A.P.N. 016-031-34

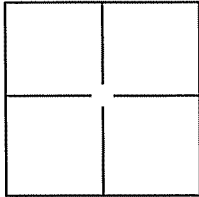
City of San Rafael

County of Marin, California

Brief Legal Description Lot 38, Map of Country Club Tract, 252 Summit Avenue, 6 RM 62.

CORNER TYPE

COORDINATES(Optional)



Government Corner Control
 Meander Property
 Rancho Other

N. _____
 E. _____
 Zone _____ NAD27 NAD83
 NAD83 Epoch _____
 Elev. _____
 Vert. Datum: NGVD29 NADV88
 Meas. Units: Metric Imperial

Date of Survey 11 November 2008

Corner - Left as found Found and tagged Established Reestablished Rebuilt

Identification and type of corner found: Evidence used to identify or procedure used to establish or reestablish the corner:

Found Iron Pipe L.S. 4788 (3), Found 1/2" Iron Pipe and Tag L.S. 2738 (1),
Found Brass Tag in Fence L.S. 4788 (1), Found Standard Street Monuments (2).

A description of the physical condition of the monument as found and as set or reset: _____

Set most westerly corner (1), northeasterly line (1), southeasterly line (1),

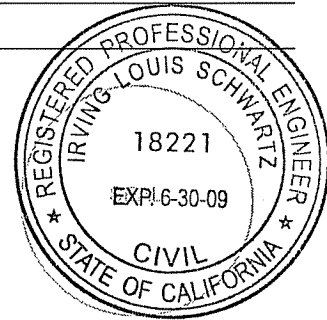
Set Ginney Points on northeasterly line (3), Set Ginney Points on southeasterly line (2),

See Exhibit "A".

SURVEYOR'S STATEMENT

This Corner Record was prepared by me or under my direction in conformance with
 the Land Surveyor's Act on NOVEMBER 18, 2008

Signed Irving Louis Schwartz P.L.S. or R.C.E. No.: 18221



COUNTY SURVEYOR'S STATEMENT

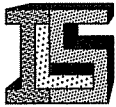
This Corner Record was received NOVEMBER 19, 2008 and examined
 and filed DECEMBER 15, 2008

Signed Craig Tackaberry P.L.S. or R.C.E. No.: 7128

Title COUNTY SURVEYOR

County Surveyor's Comment _____

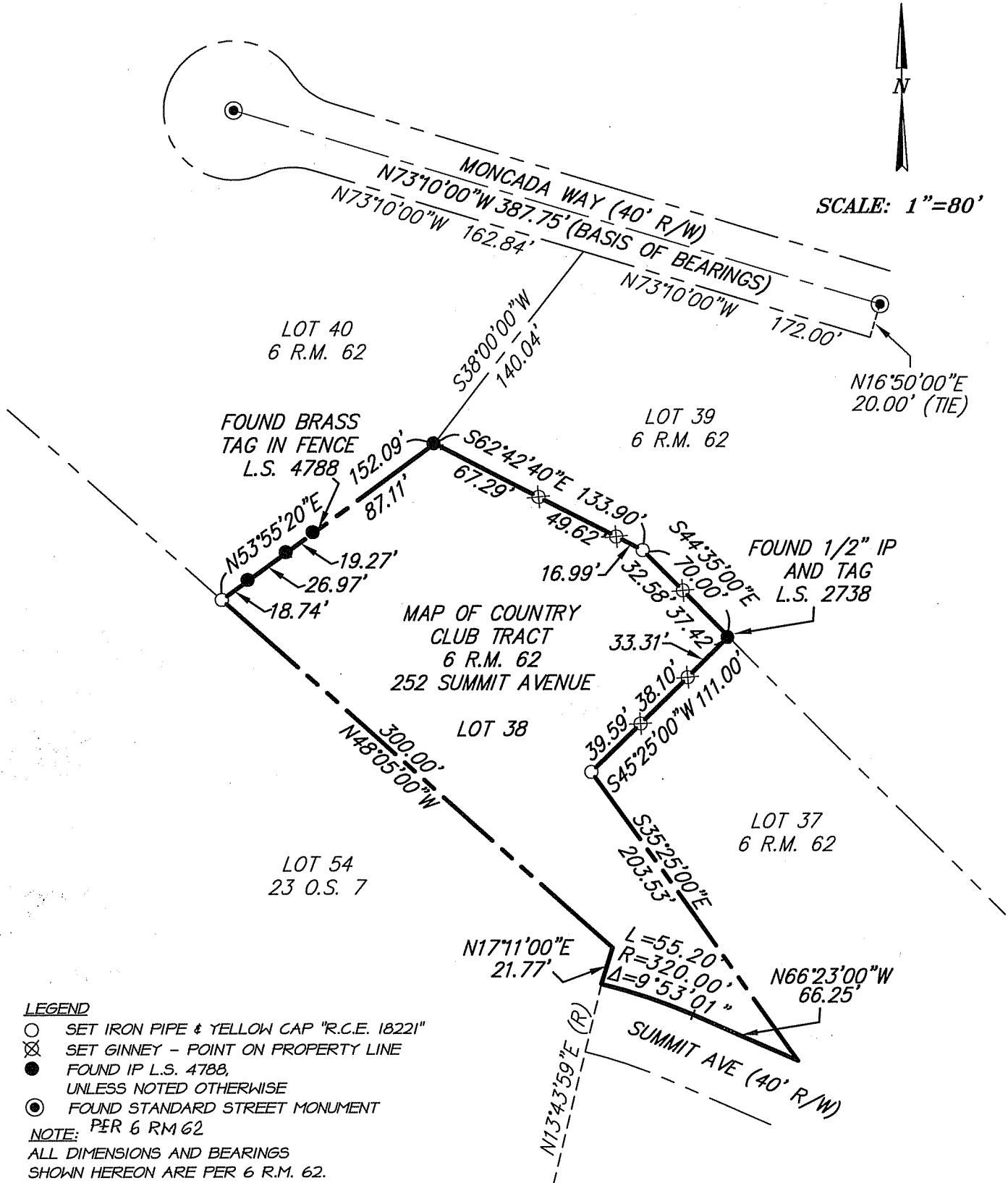




ILS ASSOCIATES, INC.®
 Civil Engineering & Land Surveying
 79 Galli Drive, Suite A
 Novato, Ca 94949-5717
 (415)883-9200 FAX (415)883-2763

DRAWN: SJM	JOB NO: 7772
DATE: 11\14\08	SHEET NO. 1 OF 1

EXHIBIT A



LEGEND

- SET IRON PIPE & YELLOW CAP "R.C.E. 18221"
- ⊗ SET GINNEY - POINT ON PROPERTY LINE
- FOUND IP L.S. 4788, UNLESS NOTED OTHERWISE
- ⊙ FOUND STANDARD STREET MONUMENT

NOTE: PER 6 RM 62
 ALL DIMENSIONS AND BEARINGS SHOWN HEREON ARE PER 6 R.M. 62.

N:\P7500\7724.dwg, P3624-80SC, 11/14/2008 2:35:22 PM, ILS Assoc. Inc., SJM