

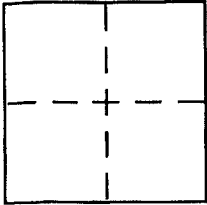
CORNER RECORD

Document Number APN 016-031-26,27 #40

City of San Rafael

County of _____, California

Brief Legal Description Portion Lots 27 & 28, GEM 62 AND PORTION PARCEL 2, 23PM 37



CORNER TYPE

Government Corner Control
Meander Property
Rancho Other
Date of Survey 10/07/04

COORDINATES (Optional)

N. _____
E. _____
Zone _____ NAD27 NAD83
NAD83 Epoch _____
Elev. _____
Vert. Datum: NGVD29 NAVD88
Meas. Units: Metric Imperial

Corner - Left as found Found and tagged Established Reestablished Rebuilt

Identification and type of corner found: Evidence used to identify or procedure used to establish or reestablish the corner:

See Page 2 of 2

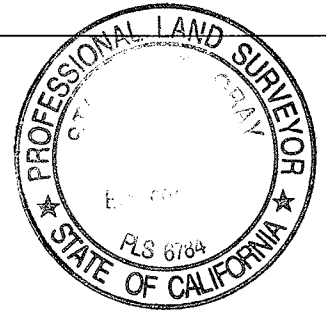
A description of the physical condition of the monument as found and as set or reset:

See Page 2 of 2

SURVEYOR'S STATEMENT

This Corner Record was prepared by me or under my direction in conformance with the Land Surveyor's Act on 11/18/04

Signed [Signature] P.L.S or R.C.E. No. 6784



COUNTY SURVEYOR'S STATEMENT

This Corner Record was received NOVEMBER 9, 2004

and examined and filed NOVEMBER 29, 2004

Signed [Signature] P.L.S or R.C.E. No. 7128

Title COUNTY SURVEYOR

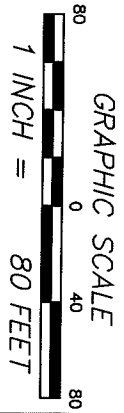


County Surveyor's Comment _____

LEGEND

- FOUND AS NOTED
- SET 5/8" REBAR WITH CAP, PLS 6784

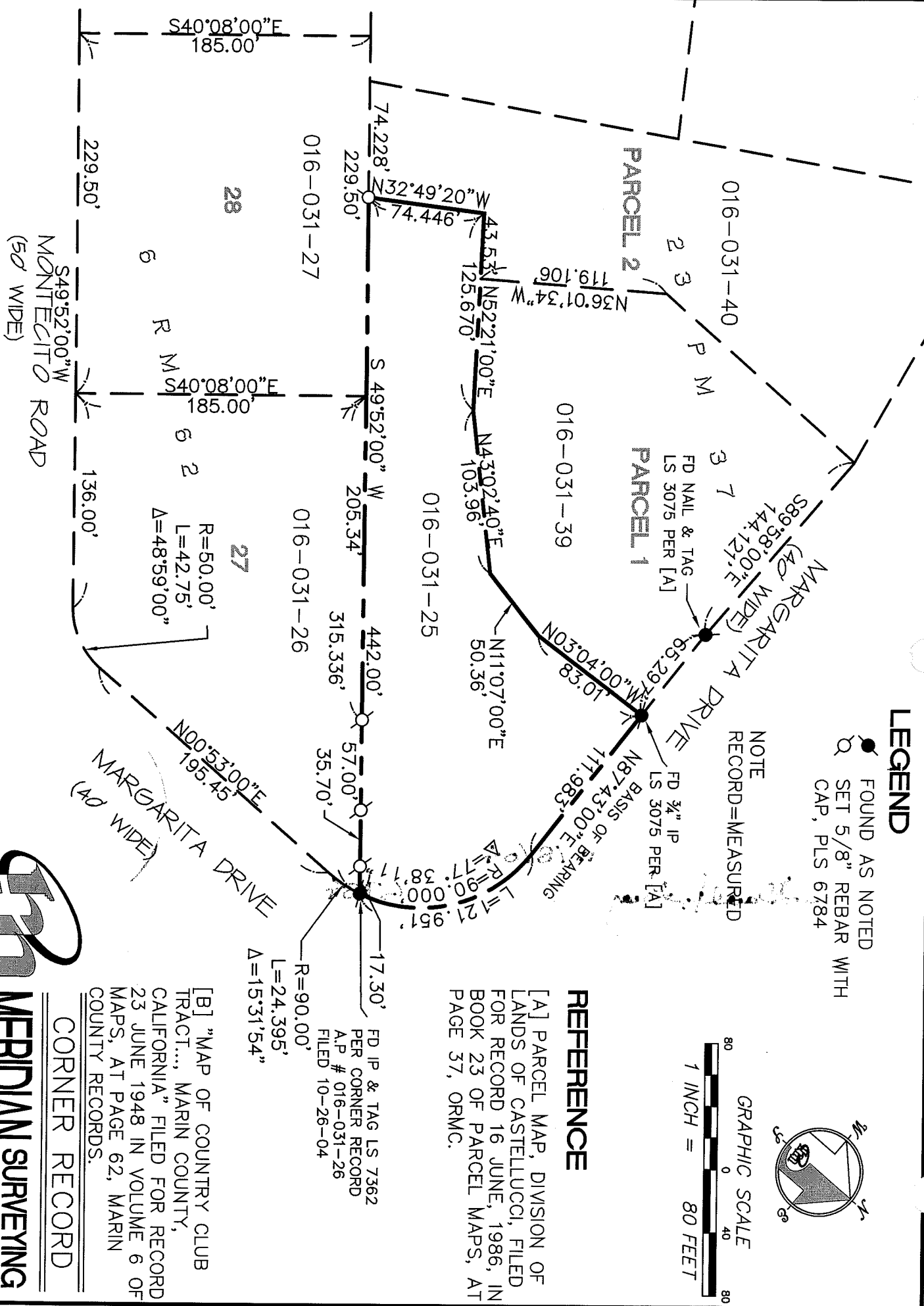
NOTE
RECORD=MEASURED



REFERENCE

[A] PARCEL MAP, DIVISION OF LANDS OF CASTELLUCCI, FILED FOR RECORD 16 JUNE, 1986, IN BOOK 23 OF PARCEL MAPS, AT PAGE 37, ORMC.

FD IP & TAG LS 7362
PER CORNER RECORD
A.P. # 016-031-26
FILED 10-26-04



CORNER RECORD

[B] "MAP OF COUNTRY CLUB TRACT... MARIN COUNTY, CALIFORNIA" FILED FOR RECORD 23 JUNE 1948 IN VOLUME 6 OF MAPS, AT PAGE 62, MARIN COUNTY RECORDS.

R=90.00'
L=24.395'
Δ=15°31'54"

R=50.00'
L=42.75'
Δ=48°59'00"

MERIDIAN SURVEYING ENGINEERING, INC.
1812 UNION STREET
SAN FRANCISCO, CA 94123
(415) 440-4131
info@meridiansurvey.com

04087
777 GRAND AVENUE, SUITE 202
SAN RAFAEL, CA 94901
(415) 466-8450