

**JERRICO ASSOCIATES**  
 SUITE 27  
 77 MARK DRIVE  
 SAN RAFAEL, CA 94903

A.P. # 16-021-49

6621

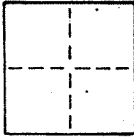
**CORNER RECORD**

1/3

COUNTY OF Marin T. \_\_\_\_\_ R. \_\_\_\_\_ MERIDIAN \_\_\_\_\_ CALIFORNIA

CORNER TYPE: GOVT. CORNER  MEANDER  RANCHO  CONTROL  OTHER

CORNER IDENTIFICATION — DATE OF VISIT \_\_\_\_\_ 19\_\_



CORNER — LEFT AS FOUND  FOUND AND TAGGED  REESTABLISHED OBLITERATED CORNER  REBUILT

PHYSICAL DESCRIPTION OF CORNER FOUND; EVIDENCE AND METHOD USED TO IDENTIFY OR REESTABLISH

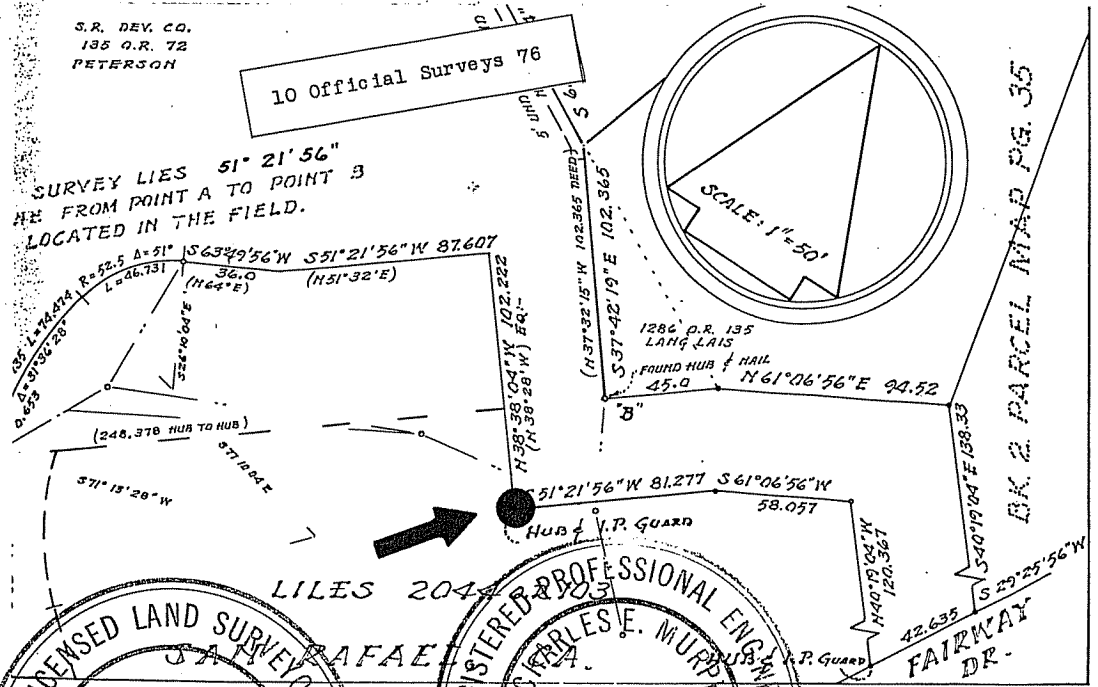
Found hubs and pipe guard set for the original division of the lands of Peterson per ( 10 o.s. '76 )

PHYSICAL DESCRIPTION OF MONUMENTS REBUILT OR PERPETUATED

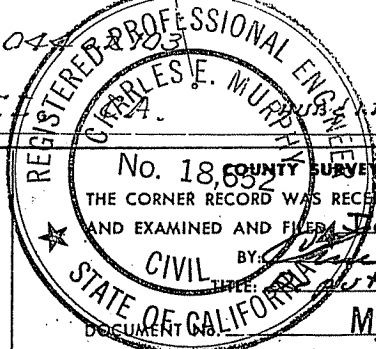
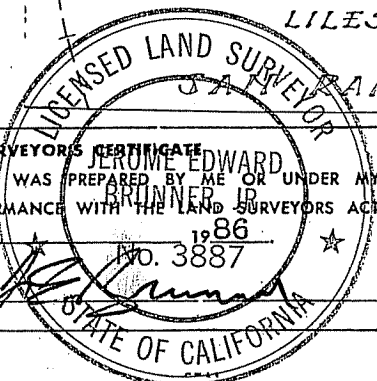
Hub gone, re-set with 5/8" rebar and cap L.S. 3887 .  
 Orig. 1 1/4" pipe guard still present.

CALIFORNIA COORDINATE SYSTEM ORDER: FIRST  SECOND  THIRD   
 STATIONS USED: NGS (USC & GS)  STATE  COUNTY  OTHER  STATION \_\_\_\_\_ STATION \_\_\_\_\_  
 ZONE \_\_\_\_\_ ELEVATION \_\_\_\_\_ NORTHINGS (Y) \_\_\_\_\_ EASTINGS (X) \_\_\_\_\_

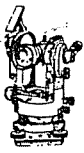
SKETCH: (Include reference tie or witness points, remarks and topo of area)



**SURVEYOR'S CERTIFICATE**  
 THIS CORNER RECORD WAS PREPARED BY ME OR UNDER MY DIRECTION IN CONFORMANCE WITH THE LAND SURVEYORS ACT ON July 3 1986  
 No. 3887  
 SIGNED: [Signature]  
 L.S. or R.C.E. No.: \_\_\_\_\_



**REGISTERED PROFESSIONAL ENGINEER'S CERTIFICATE**  
 No. 18,635 COUNTY SURVEYOR'S CERTIFICATE  
 THE CORNER RECORD WAS RECEIVED July 8 1986  
 AND EXAMINED AND FILED July 9 1986  
 BY: [Signature]  
 CIVIL TITLE: County Surveyor  
 My Certificate Expires June 30, 1989  
 STATEMENT ON BACK OF SHEET



JERRICO ASSOCIATES

SUITE 27  
77 MARK DRIVE  
SAN RAFAEL, CA 94903

16-021-49

6621

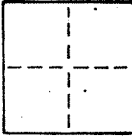
CORNER RECORD

2/3

COUNTY OF Marin T. \_\_\_\_\_ R. \_\_\_\_\_ MERIDIAN \_\_\_\_\_ CALIFORNIA

CORNER TYPE: GOVT. CORNER  MEANDER  RANCHO  CONTROL  OTHER

CORNER IDENTIFICATION — DATE OF VISIT \_\_\_\_\_ 19\_\_\_\_



CORNER — LEFT AS FOUND  FOUND AND TAGGED  REESTABLISHED OBLITERATED CORNER  REBUILT

PHYSICAL DESCRIPTION OF CORNER FOUND; EVIDENCE AND METHOD USED TO IDENTIFY OR REESTABLISH

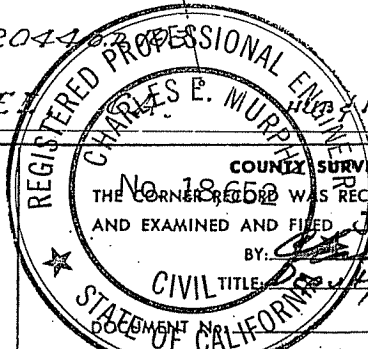
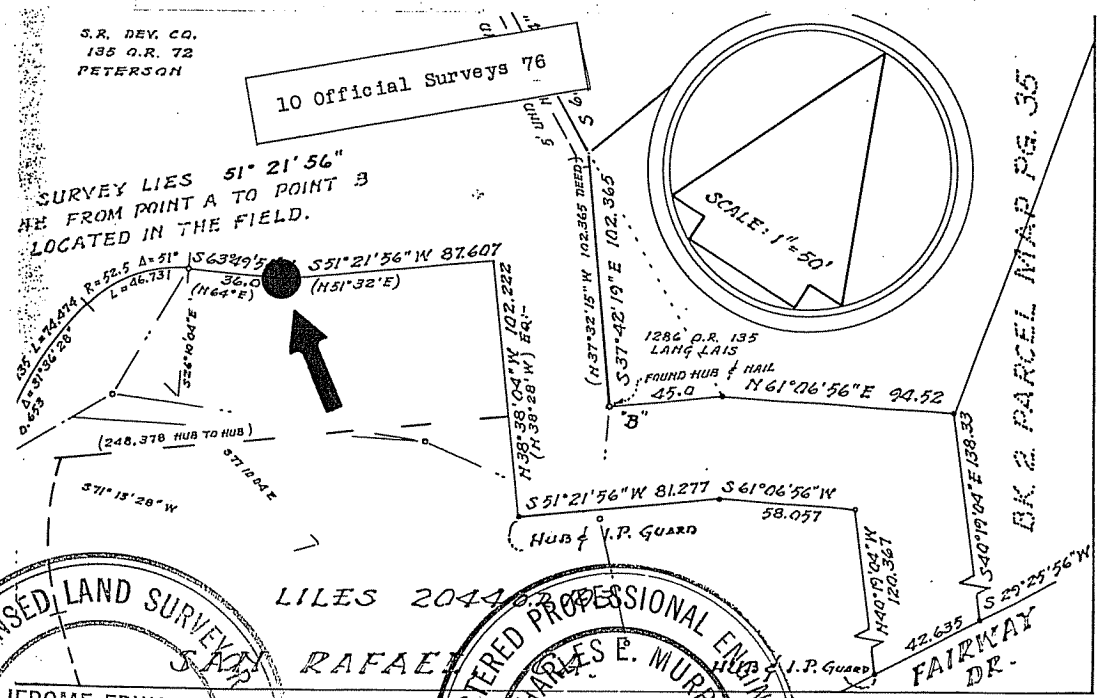
Found hubs and pipe guard set for the original division of the lands of Peterson per ( 10 o.s. 76 )

PHYSICAL DESCRIPTION OF MONUMENTS REBUILT OR PERPETUATED

Set lead plug and tag L.S. 3887 in c/l conc. driveway

CALIFORNIA COORDINATE SYSTEM ORDER: FIRST  SECOND  THIRD   
STATIONS USED: NGS (USC & GS)  STATE  COUNTY  OTHER  STATION \_\_\_\_\_ STATION \_\_\_\_\_  
ZONE \_\_\_\_\_ ELEVATION \_\_\_\_\_ NORTHINGS (Y) \_\_\_\_\_ EASTINGS (X) \_\_\_\_\_

SKETCH: (Include reference tie or witness points, remarks and topo of area)

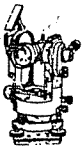


THIS CORNER RECORD WAS PREPARED BY ME OR UNDER MY DIRECTION IN CONFORMANCE WITH THE LAND SURVEYORS ACT ON July 3 No. 3887 1986

SIGNED: [Signature]  
L.S. or R.C.E. No. \_\_\_\_\_

COUNTY SURVEYOR'S CERTIFICATE  
No. 18652 WAS RECEIVED July 8 1986  
AND EXAMINED AND FILED July 9 1986  
BY: [Signature]  
CIVIL TITLE: County Surveyor

My Certificate Expires June 30, 1989  
STATEMENT ON BACK OF SHEET



**JERRICO ASSOCIATES**  
 SUITE 27  
 77 MARK DRIVE  
 SAN RAFAEL, CA 94903

16-021-49

6621

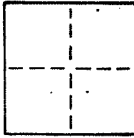
**CORNER RECORD**

3/3

COUNTY OF Marin T. \_\_\_\_\_ R. \_\_\_\_\_ MERIDIAN \_\_\_\_\_ CALIFORNIA

CORNER TYPE: GOVT. CORNER  MEANDER  RANCHO  CONTROL  OTHER

CORNER IDENTIFICATION — DATE OF VISIT \_\_\_\_\_ 19\_\_\_\_



CORNER — LEFT AS FOUND  FOUND AND TAGGED  REESTABLISHED OBLITERATED CORNER  REBUILT

PHYSICAL DESCRIPTION OF CORNER FOUND; EVIDENCE AND METHOD USED TO IDENTIFY OR REESTABLISH

Found hubs and pipe guard set for the original division of the  
 Bands of Peterson per ( 10 o.s. 76 )

PHYSICAL DESCRIPTION OF MONUMENTS REBUILT OR PERPETUATED

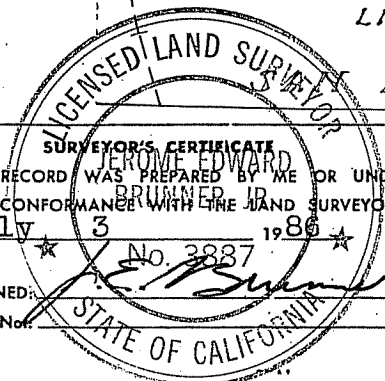
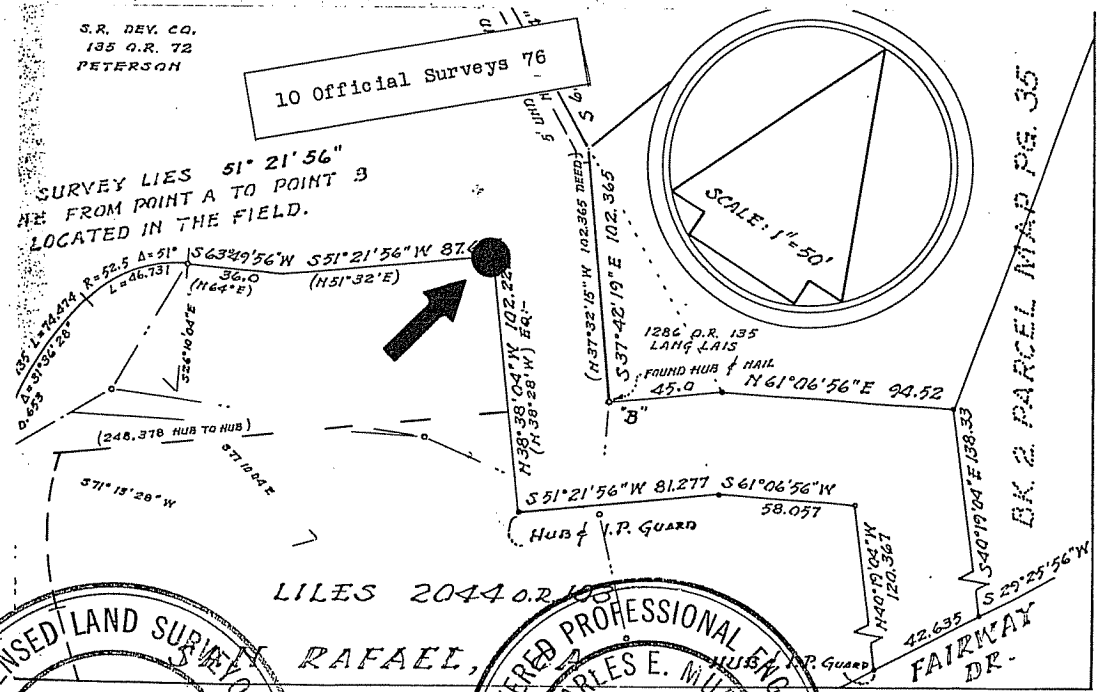
Found old hub and L.S. 2535 tag and 1" pipe guard

CALIFORNIA COORDINATE SYSTEM ORDER: FIRST  SECOND  THIRD

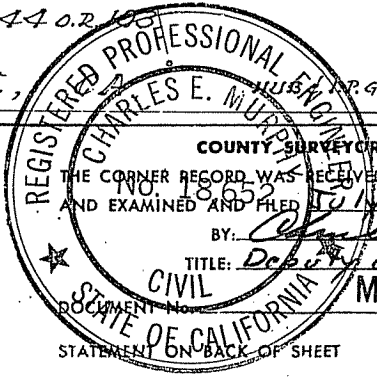
STATIONS USED: NGS (USC & GS)  STATE  COUNTY  OTHER  STATION \_\_\_\_\_ STATION \_\_\_\_\_

ZONE \_\_\_\_\_ ELEVATION \_\_\_\_\_ NORTHINGS (Y) \_\_\_\_\_ EASTINGS (X) \_\_\_\_\_

SKETCH: (Include reference tie or witness points, remarks and topo of area)



**SURVEYOR'S CERTIFICATE**  
 FROM EDWARD BRUNNER, J.D.  
 THIS CORNER RECORD WAS RECEIVED BY ME OR UNDER MY  
 DIRECTION IN CONFORMANCE WITH THE LAND SURVEYORS ACT  
 ON July 3 1986  
 SIGNED: Edward Brunner  
 L.S. or R.C.E. No. \_\_\_\_\_



**COUNTY SURVEYOR'S CERTIFICATE**  
 THE CORNER RECORD WAS RECEIVED July 8 1986  
 AND EXAMINED AND FILED July 9 1986  
 BY: Charles E. Murphy  
 TITLE: Deputy County Surveyor  
 My Certificate Expires June 30, 1989  
 STATEMENT ON BACK OF SHEET