



JERRICO ASSOCIATES
 SUITE 27
 77 MARK DRIVE
 SAN RAFAEL, CA 94903

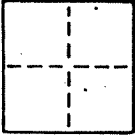
A.R # 15-301-30

6735 ✓

CORNER RECORD

1/6

COUNTY OF Marin T. _____ R. _____ MERIDIAN _____ CALIFORNIA
 CORNER TYPE: GOVT. CORNER MEANDER RANCHO CONTROL OTHER
 CORNER IDENTIFICATION — DATE OF VISIT _____ 19____



CORNER — LEFT AS FOUND FOUND AND TAGGED REESTABLISHED OBLITERATED CORNER REBUILT

PHYSICAL DESCRIPTION OF CORNER FOUND; EVIDENCE AND METHOD USED TO IDENTIFY OR REESTABLISH

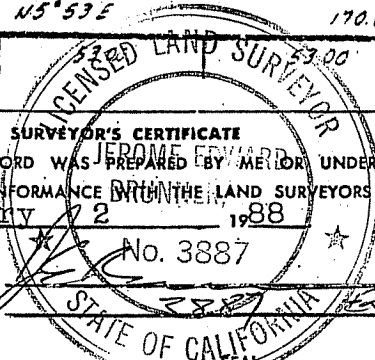
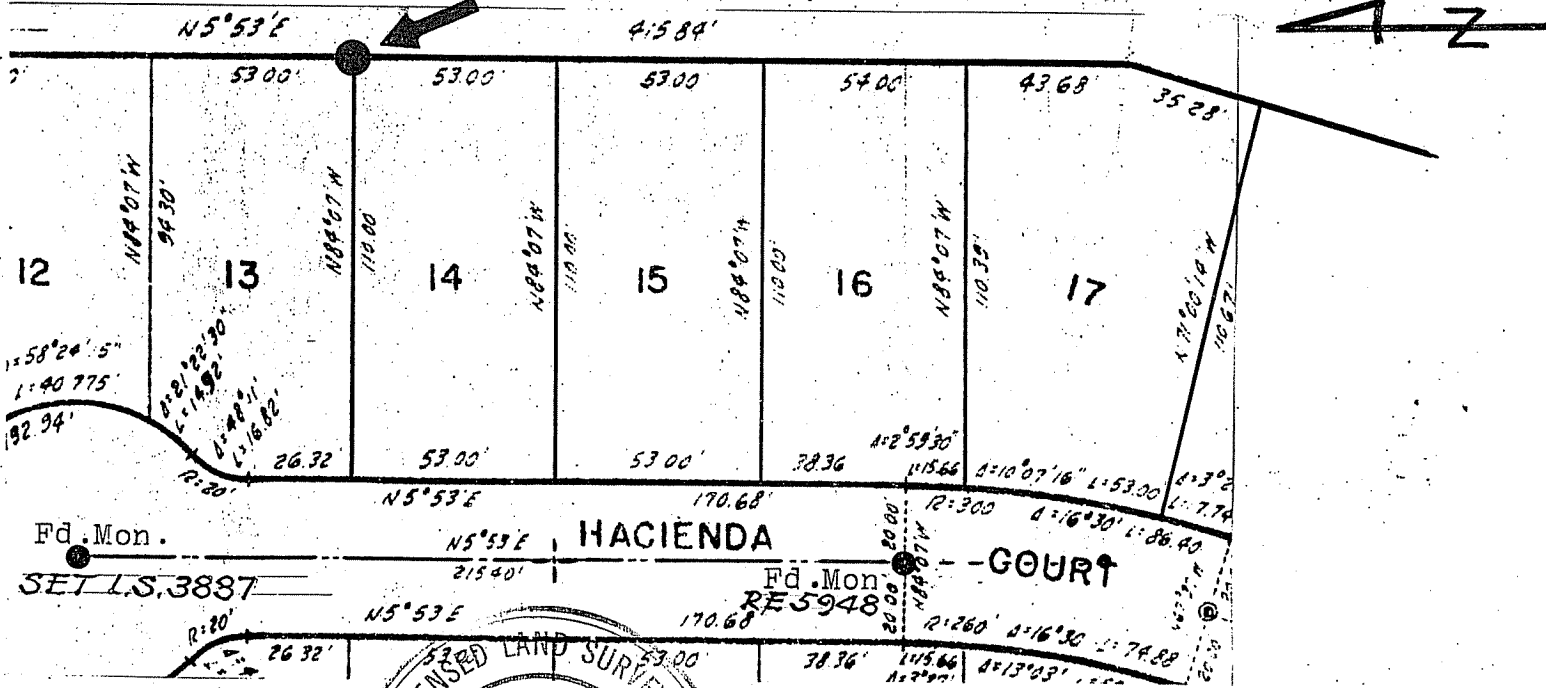
Monumentation from Hacienda Court centerline pipes (0.3') below grade
 7 R.M. 85

PHYSICAL DESCRIPTION OF MONUMENTS REBUILT OR PERPETUATED

Set hub and L.S. 3887

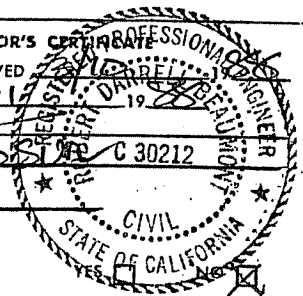
CALIFORNIA COORDINATE SYSTEM ORDER: FIRST SECOND THIRD
 STATIONS USED: NGS (USC & GS) STATE COUNTY OTHER STATION _____ STATION _____
 ZONE _____ ELEVATION _____ NORTHINGS (Y) _____ EASTINGS (X) _____

SKETCH: (Include reference tie or witness points, remarks and topo of area)



SURVEYOR'S CERTIFICATE
 THIS CORNER RECORD WAS PREPARED BY ME OR UNDER MY DIRECTION IN CONFORMANCE WITH THE LAND SURVEYORS ACT ON February 22 1988
 SIGNED: _____
 L.S. or R.C.E. No. _____

COUNTY SURVEYOR'S CERTIFICATE
 THE CORNER RECORD WAS RECEIVED AND EXAMINED AND FILED 3/11/88 1988
 BY: Dep Cost
 TITLE: Dep Cost
 DOCUMENT No. _____
 STATEMENT ON BACK OF SHEET



ex. 3-21-88



JERRICO ASSOCIATES
 SUITE 27
 77 MARK DRIVE
 SAN RAFAEL, CA 94903

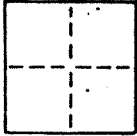
15-301-30

6735

CORNER RECORD

2/6

COUNTY OF Marin T. _____ R. _____ MERIDIAN _____ CALIFORNIA
 CORNER TYPE: GOVT. CORNER MEANDER RANCHO CONTROL OTHER
 CORNER IDENTIFICATION — DATE OF VISIT _____ 19____



CORNER — LEFT AS FOUND FOUND AND TAGGED REESTABLISHED OBLITERATED CORNER REBUILT

PHYSICAL DESCRIPTION OF CORNER FOUND; EVIDENCE AND METHOD USED TO IDENTIFY OR REESTABLISH

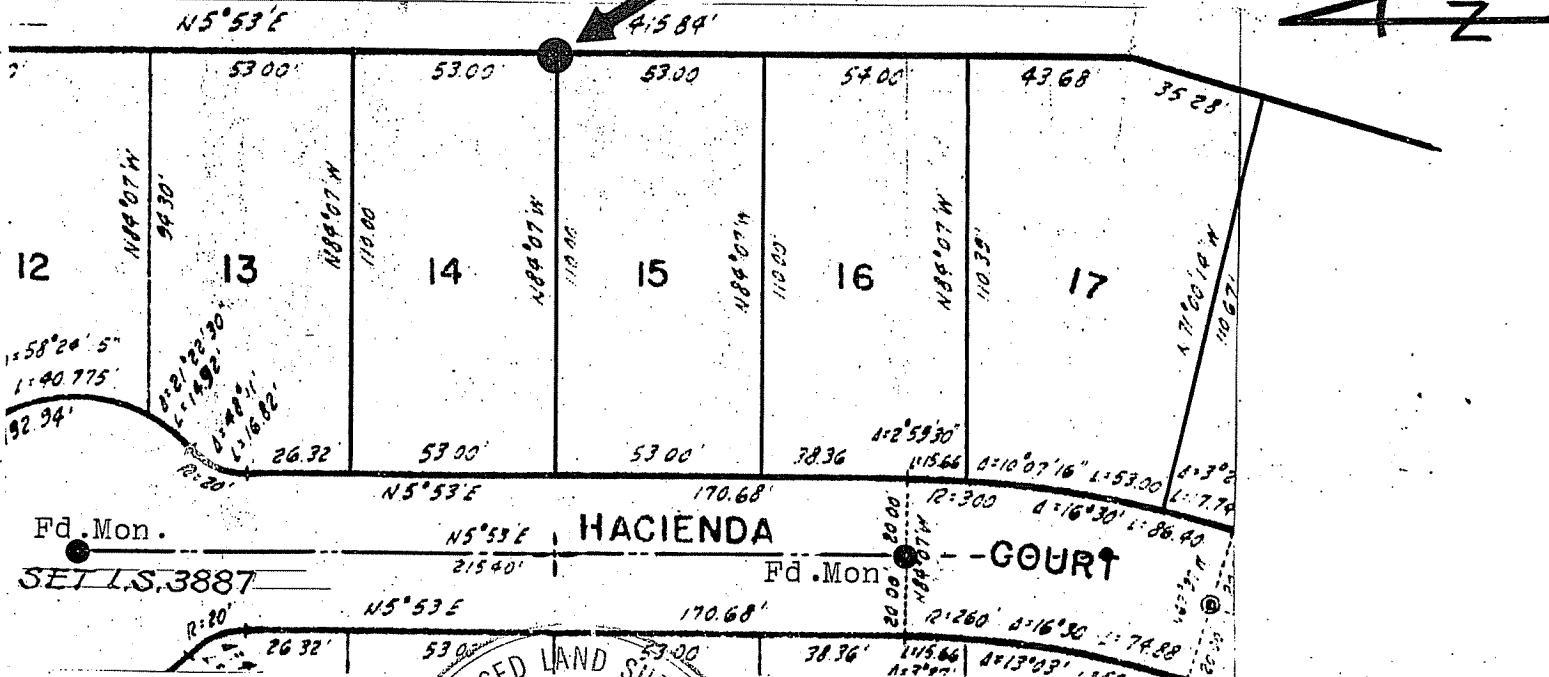
Monumentation from Hacienda Court centerline pipes (0.3') below grade
 7 R.M. 85

PHYSICAL DESCRIPTION OF MONUMENTS REBUILT OR PERPETUATED

Set hub and L.S. 3887

CALIFORNIA COORDINATE SYSTEM ORDER: FIRST SECOND THIRD
 STATIONS USED: NGS (USC & GS) STATE COUNTY OTHER STATION _____ STATION _____
 ZONE _____ ELEVATION _____ NORTHINGS (Y) _____ EASTINGS (X) _____

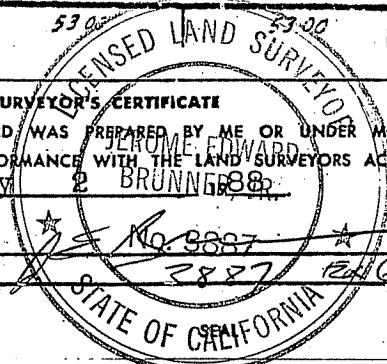
SKETCH: (Include reference tie or witness points, remarks and topo of area)



SURVEYOR'S CERTIFICATE

THIS CORNER RECORD WAS PREPARED BY ME OR UNDER MY DIRECTION IN CONFORMANCE WITH THE LAND SURVEYORS ACT ON February 2 1988

SIGNED: [Signature] No. 3887
 L.S. or R.C.E. No.: 3887 2/16/88

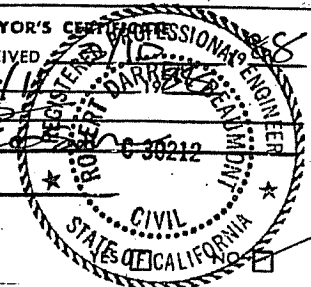


COUNTY SURVEYOR'S CERTIFICATE

THE CORNER RECORD WAS RECEIVED AND EXAMINED AND FILED 3/16/88

BY: [Signature]
 TITLE: Deputy

DOCUMENT No. _____
 STATEMENT ON BACK OF SHEET



ex. 3-31-88



JERRICO ASSOCIATES
 SUITE 27
 77 MARK DRIVE
 SAN RAFAEL, CA 94903

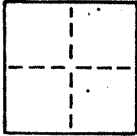
15-301-30

6735 ✓

CORNER RECORD

3/6

COUNTY OF Marin T. _____ R. _____ MERIDIAN _____ CALIFORNIA
 CORNER TYPE: GOVT. CORNER MEANDER RANCHO CONTROL OTHER
 CORNER IDENTIFICATION — DATE OF VISIT _____ 19____



CORNER — LEFT AS FOUND FOUND AND TAGGED REESTABLISHED OBLITERATED CORNER REBUILT

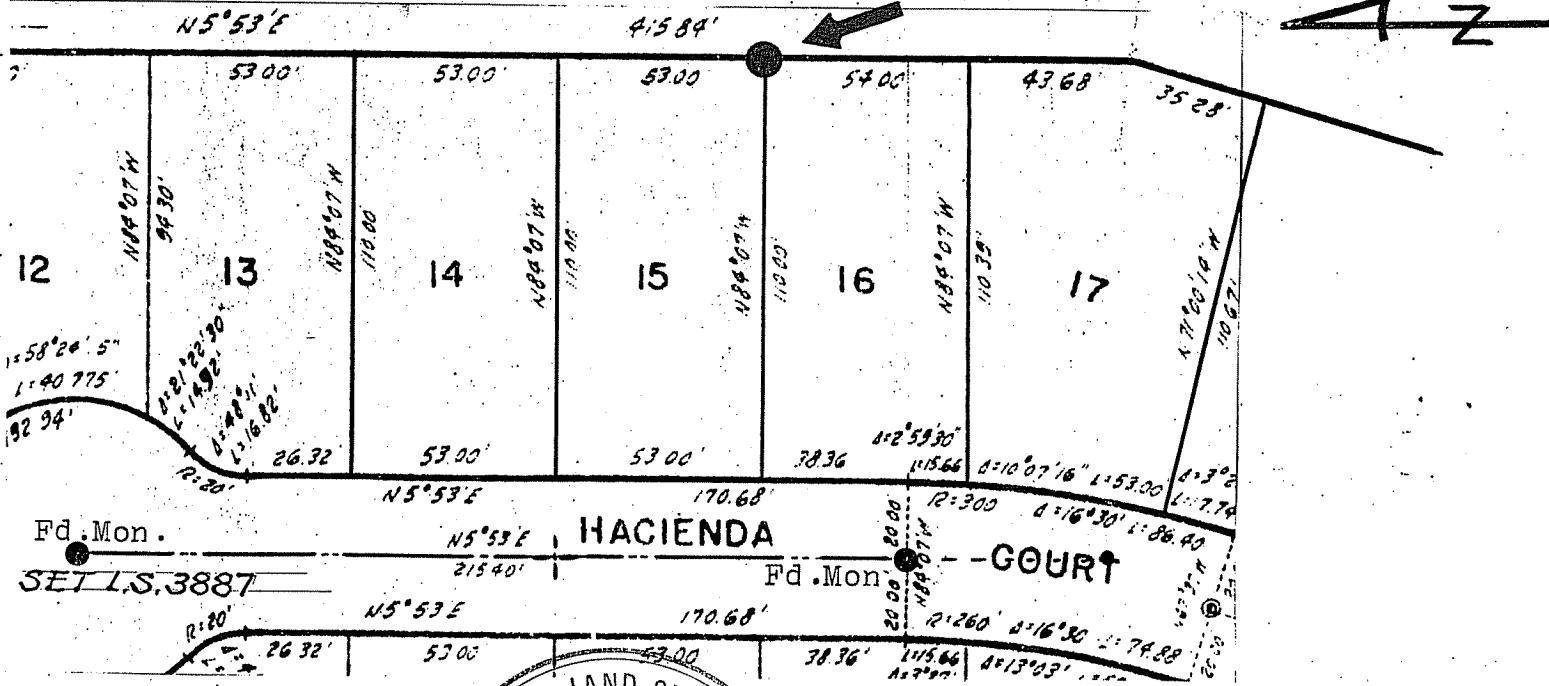
PHYSICAL DESCRIPTION OF CORNER FOUND; EVIDENCE AND METHOD USED TO IDENTIFY OR REESTABLISH
 Monumentation from Hacienda Court centerline pipes (0.3') below grade
 7 R.M. 85

PHYSICAL DESCRIPTION OF MONUMENTS REBUILT OR PERPETUATED

Set hub and L.S. 3887

CALIFORNIA COORDINATE SYSTEM ORDER: FIRST SECOND THIRD
 STATIONS USED: NGS (USC & GS) STATE COUNTY OTHER STATION _____ STATION _____
 ZONE _____ ELEVATION _____ NORTHINGS (Y) _____ EASTINGS (X) _____

SKETCH: (Include reference tie or witness points, remarks and topo of area)



Fd. Mon. SET L.S. 3887 N5°53'E HACIENDA COURT

SURVEYOR'S CERTIFICATE
 THIS CORNER RECORD WAS PREPARED BY ME OR UNDER MY DIRECTION IN CONFORMANCE WITH THE LAND SURVEYORS' ACT ON February 2 1988
 SIGNED: [Signature]
 L.S. or R.C.E. No.: No. 3887
 STATE OF CALIFORNIA

COUNTY SURVEYOR'S CERTIFICATE
 THE CORNER RECORD WAS RECEIVED AND EXAMINED AND FILED 2 BY: [Signature] TITLE: Deputy
 DOCUMENT No. _____
 STATEMENT ON BACK OF SHEET
EX. 3-31-88
 CIVIL ENGINEER
 STATE OF CALIFORNIA



JERRICO ASSOCIATES
 SUITE 27
 77 MARK DRIVE
 SAN RAFAEL, CA 94903

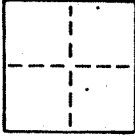
15-301-30

6735 ✓

CORNER RECORD

4/6

COUNTY OF Marin T. _____ R. _____ MERIDIAN CALIFORNIA
 CORNER TYPE: GOVT. CORNER MEANDER RANCHO CONTROL OTHER
 CORNER IDENTIFICATION — DATE OF VISIT _____ 19____



CORNER — LEFT AS FOUND FOUND AND TAGGED REESTABLISHED OBLITERATED CORNER REBUILT

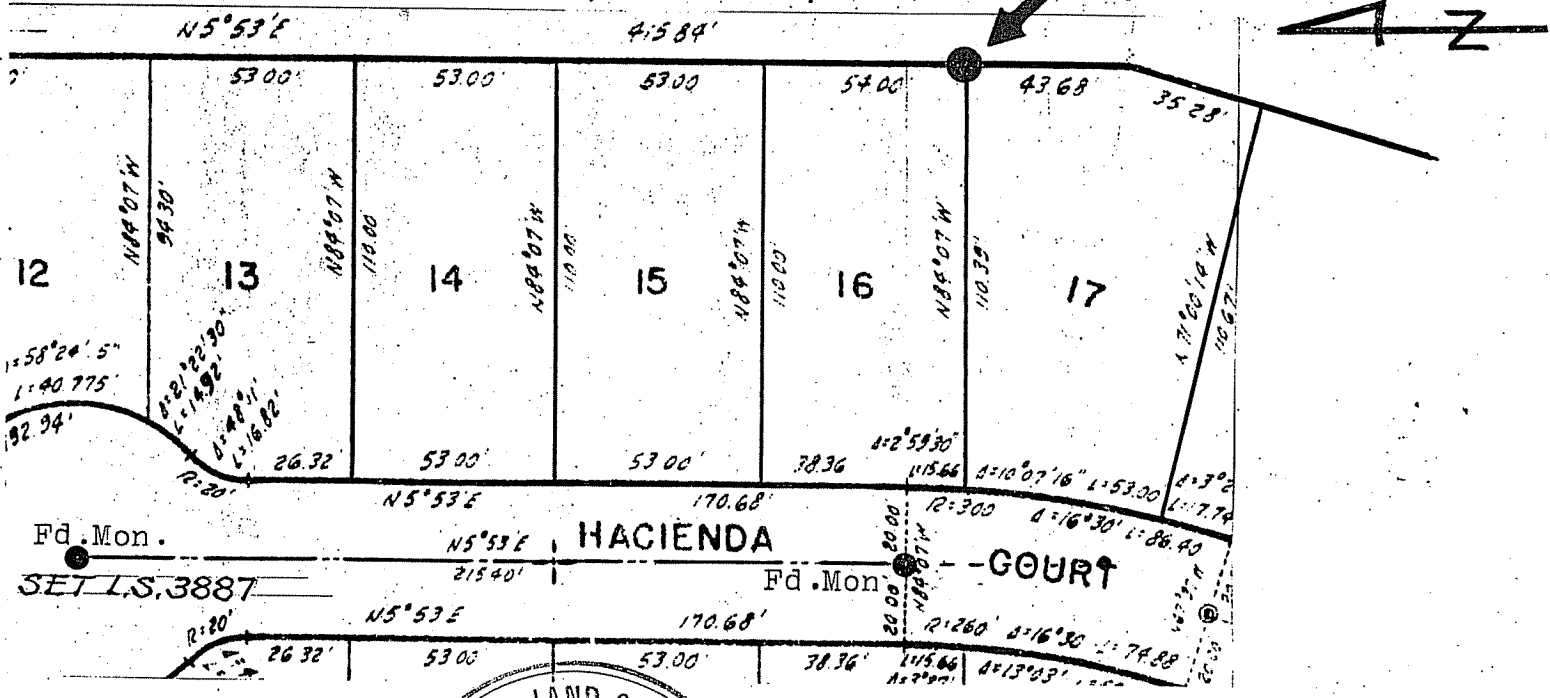
PHYSICAL DESCRIPTION OF CORNER FOUND; EVIDENCE AND METHOD USED TO IDENTIFY OR REESTABLISH
 Monumentation from Hacienda Court centerline pipes (0.3') below grade
 7 R.M. 85

PHYSICAL DESCRIPTION OF MONUMENTS REBUILT OR PERPETUATED

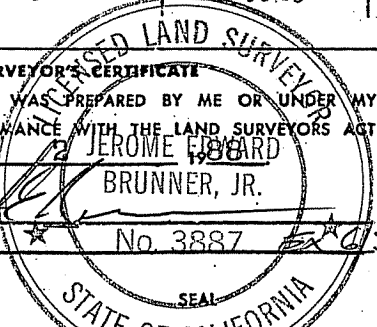
Set hub and L.S. 3887

CALIFORNIA COORDINATE SYSTEM ORDER: FIRST SECOND THIRD
 STATIONS USED: NGS (USC & GS) STATE COUNTY OTHER STATION _____ STATION _____
 ZONE _____ ELEVATION _____ NORTHINGS (Y) _____ EASTINGS (X) _____

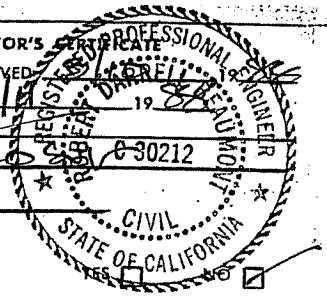
SKETCH: (Include reference tie or witness points, remarks and topo of area)



SURVEYOR'S CERTIFICATE
 THIS CORNER RECORD WAS PREPARED BY ME OR UNDER MY DIRECTION IN CONFORMANCE WITH THE LAND SURVEYORS ACT ON February 12 1988
 SIGNED: JEROME EDWARD BRUNNER, JR.
 L.S. or R.C.E. No. No. 3887 EX-3-31-88



COUNTY SURVEYOR'S CERTIFICATE
 THE CORNER RECORD WAS RECEIVED AND EXAMINED AND FILED 3/17/88 1988
 BY: DEPCO
 TITLE: DEPCO
 DOCUMENT No. _____
 STATEMENT ON BACK OF SHEET EX-3-31-88





JERRICO ASSOCIATES
 SUITE 27
 77 MARK DRIVE
 SAN RAFAEL, CA 94903

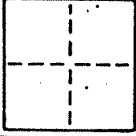
15-301-30

6735 ✓

CORNER RECORD

5/6

COUNTY OF Marin T. _____ R. _____ MERIDIAN _____ CALIFORNIA
 CORNER TYPE: GOVT. CORNER MEANDER RANCHO CONTROL OTHER
 CORNER IDENTIFICATION — DATE OF VISIT _____ 19____



CORNER — LEFT AS FOUND FOUND AND TAGGED REESTABLISHED OBLITERATED CORNER REBUILT

PHYSICAL DESCRIPTION OF CORNER FOUND; EVIDENCE AND METHOD USED TO IDENTIFY OR REESTABLISH

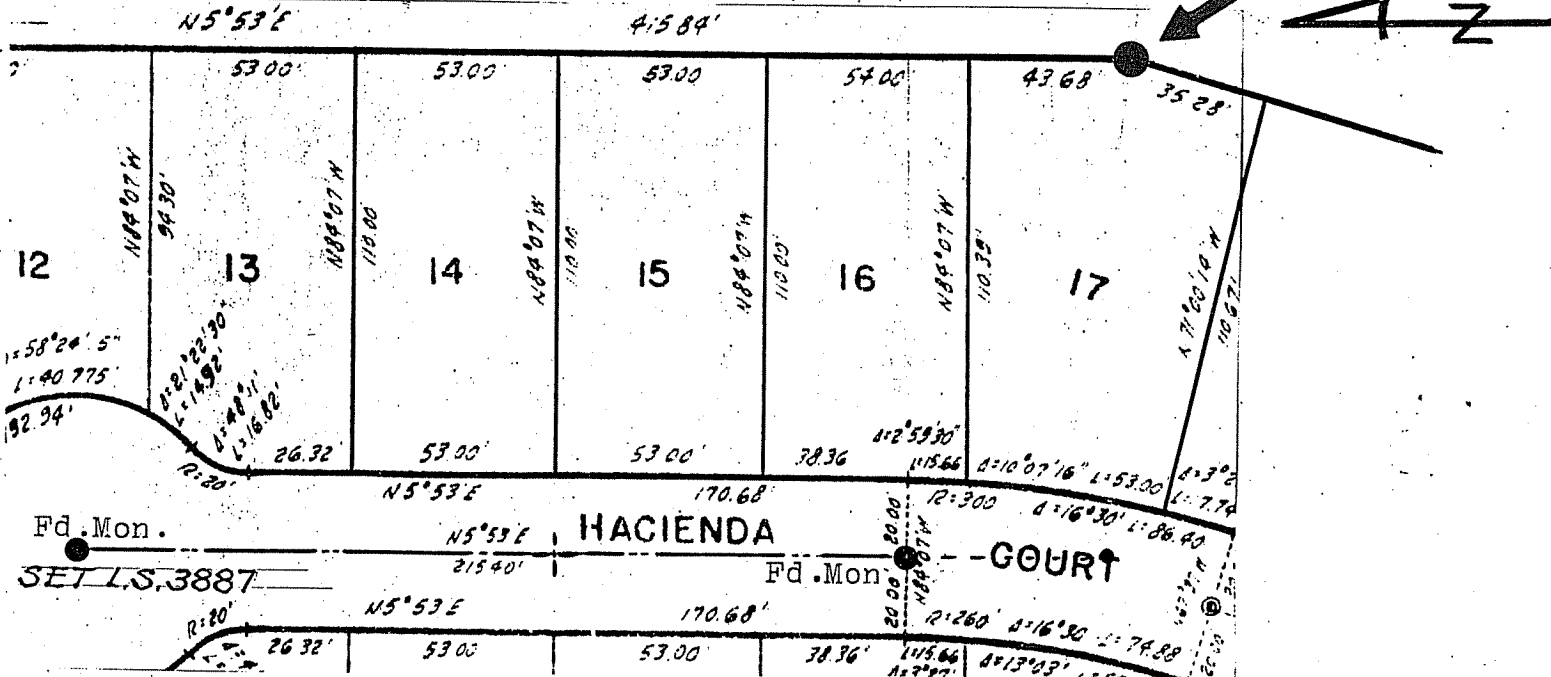
Monumentation from Hacienda Court centerline pipes (0.3') below grade
 7 R.M. 85

PHYSICAL DESCRIPTION OF MONUMENTS REBUILT OR PERPETUATED

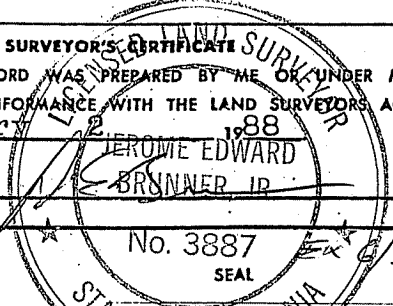
Set hub and L.S. 3887, found spike nail 0.25 westerly/ 0.04 southerly

CALIFORNIA COORDINATE SYSTEM ORDER: FIRST SECOND THIRD
 STATIONS USED: NGS (USC & GS) STATE COUNTY OTHER STATION _____ STATION _____
 ZONE _____ ELEVATION _____ NORTHINGS (Y) _____ EASTINGS (X) _____

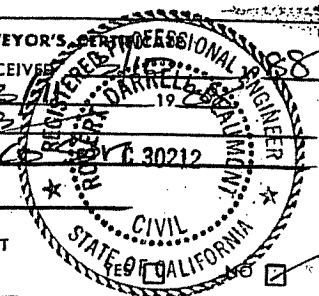
SKETCH: (Include reference tie or witness points, remarks and topo of area)



SURVEYOR'S CERTIFICATE
 THIS CORNER RECORD WAS PREPARED BY ME OR UNDER MY DIRECTION IN CONFORMANCE WITH THE LAND SURVEYORS ACT ON February 12, 1988
 SIGNED: JEROME EDWARD BRUNNER JR.
 L.S. or R.C.E. No. _____



COUNTY SURVEYOR'S CERTIFICATE
 THE CORNER RECORD WAS RECEIVED AND EXAMINED AND FILED 2 BY: D.P.P.
 TITLE: DEPT. 30212



DOCUMENT No. _____
 STATEMENT ON BACK OF SHEET

EX. 3-31-88



JERRICO ASSOCIATES
 SUITE 27
 77 MARK DRIVE
 SAN RAFAEL, CA 94903

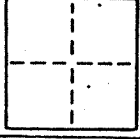
15-301-30

6735

CORNER RECORD

6/6

COUNTY OF Marin T. _____ R. _____ MERIDIAN _____ CALIFORNIA
 CORNER TYPE: GOVT. CORNER MEANDER RANCHO CONTROL OTHER
 CORNER IDENTIFICATION — DATE OF VISIT _____ 19____



CORNER — LEFT AS FOUND FOUND AND TAGGED REESTABLISHED OBLITERATED CORNER REBUILT

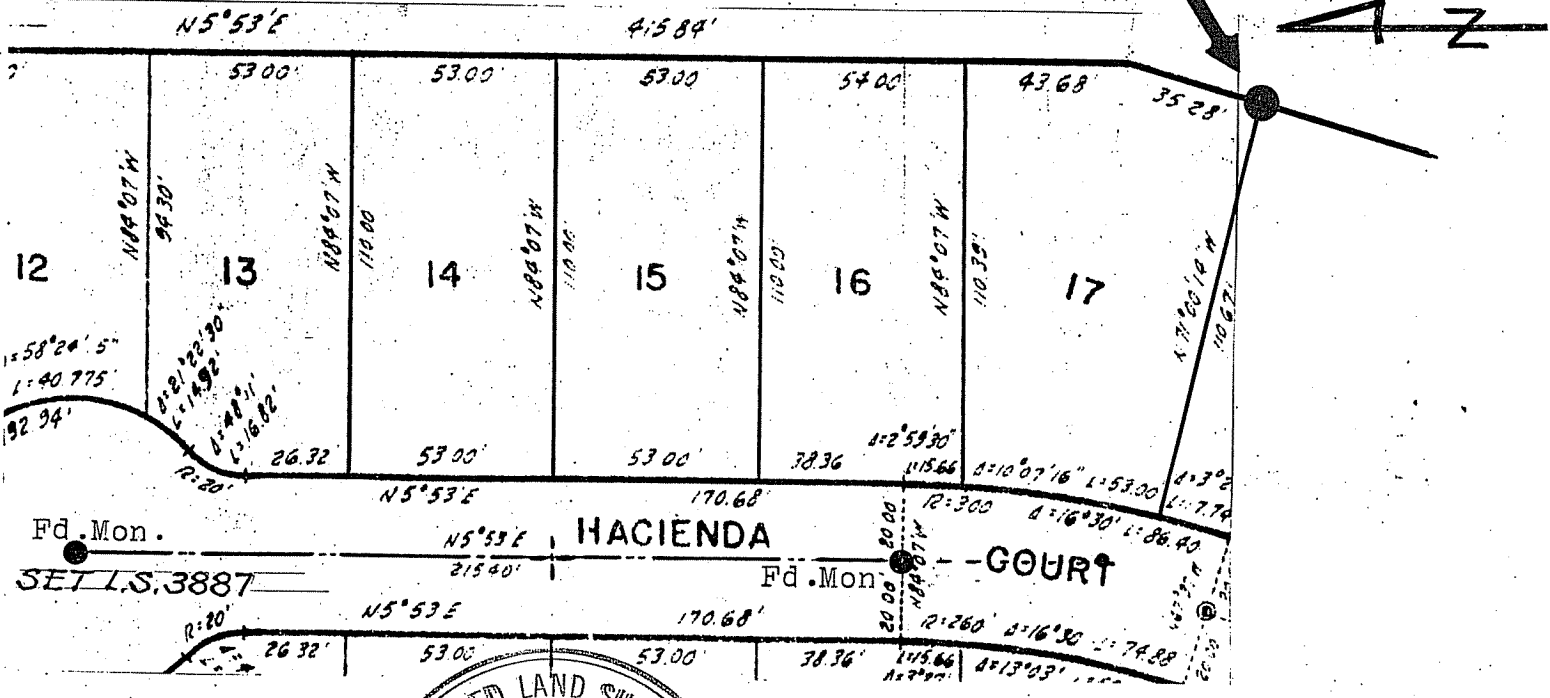
PHYSICAL DESCRIPTION OF CORNER FOUND; EVIDENCE AND METHOD USED TO IDENTIFY OR REESTABLISH
 Monumentation from Hacienda Court centerline pipes (0.3') below grade
 7 R.M. 85

PHYSICAL DESCRIPTION OF MONUMENTS REBUILT OR PERPETUATED

Set hub and L.S. 3887

CALIFORNIA COORDINATE SYSTEM ORDER: FIRST SECOND THIRD
 STATIONS USED: NGS (USC & GS) STATE COUNTY OTHER STATION _____ STATION _____
 ZONE _____ ELEVATION _____ NORTHINGS (Y) _____ EASTINGS (X) _____

SKETCH: (Include reference tie or witness points, remarks and topo of area)



SURVEYOR'S CERTIFICATE
 THIS CORNER RECORD WAS PREPARED BY ME OR UNDER MY DIRECTION IN CONFORMANCE WITH THE LAND SURVEYORS ACT ON February 2 1988
 SIGNED: [Signature]
 L.S. or R.C.E. No. No. 3887

COUNTY SURVEYOR'S CERTIFICATE
 THE CORNER RECORD WAS RECEIVED AND EXAMINED AND FILED BY: [Signature] 1988
 TITLE: Depledge C 30212
 DOCUMENT No. _____
 STATEMENT ON BACK OF SHEET
ex. 3-21-88

