

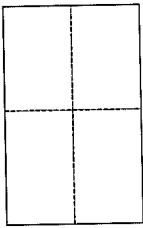
CORNER RECORD

Document Number 015-293-07

City of San Rafael

County of Marin, California

Brief Legal Description Lot 15, Oak Woodlands, Unit Two, Book of 11 Record Maps, Page 11



CORNER TYPE

Government Corner Control

Meaneder Property

Rancho Other

Date of Survey October 11, 2013

COORDINATES (Optional)

N. _____

E. _____

Zone _____ NAD27 NAD83

NAD83 Epoch _____

Elev. _____

Vert. Datum: NGVD29 NAVD88

Meas. Units: Metric Imperial

Corner - Left as found Found and tagged Established Reestablished Rebuilt

Identification and type of corner found: Evidence used to identify or procedure used to establish or reestablish the corner:
Street monuments per Book 11 of Record Maps, Page 11 were found in record position and used to reestablish the location of the northeast corner of Lot 15 shown on said map.

A description of the physical condition of the monument as found and as set or reset: Set 1/2" iron pipe L.S. 7237

SURVEYOR'S STATEMENT

This Corner Record was prepared by me or under my direction in conformance with the Land Surveyor's Act on OCT. 18, 2013
 Signed Michael E. Ford P.L.S. or R.C.E. No. 7237

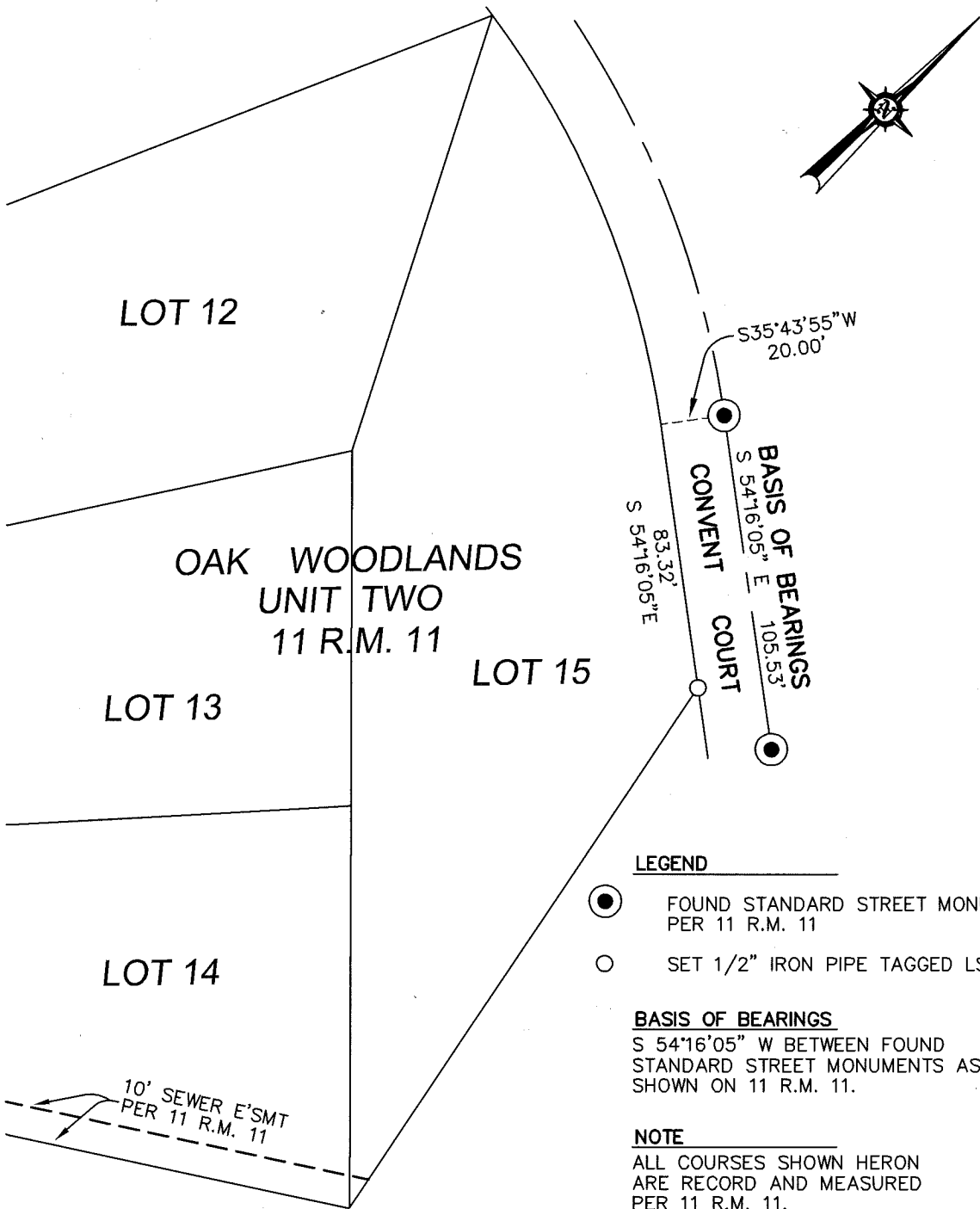


COUNTY SURVEYOR'S STATEMENT

This Corner Record was received NOVEMBER 5, 2013
 and examined and filed DECEMBER 20, 2013
 Signed Richard G. Simonitch P.L.S. or R.C.E. No. 7821
 Title DEPUTY CO. SURVEYOR



County Surveyor's Comment



LEGEND

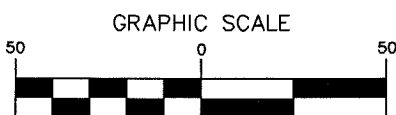
- FOUND STANDARD STREET MONUMENT PER 11 R.M. 11
- SET 1/2" IRON PIPE TAGGED LS 7237

BASIS OF BEARINGS

S 54°16'05" W BETWEEN FOUND STANDARD STREET MONUMENTS AS SHOWN ON 11 R.M. 11.

NOTE

ALL COURSES SHOWN HERON ARE RECORD AND MEASURED PER 11 R.M. 11.



(IN FEET)
1 inch = 50 ft.



2300 bethards drive, suite J
santa rosa, california 95405
p 707.542.8513 - f 707.542.1825
www.michaelfordinc.com