

CORNER RECORD

Document Number 015-293-06

City of San Rafael

County of Marin, California

Brief Legal Description Lot 14, Oak Woodlands, Unit Two, Book of 11 Record Maps, Page 11



CORNER TYPE

Government Corner Control
Meaneder Property
Rancho Other
Date of Survey July 25, 2013

COORDINATES (Optional)

N. _____
E. _____
Zone _____ NAD27 NAD83
NAD83 Epoch _____
Elev. _____
Vert. Datum: NGVD29 NAVD88
Meas. Units: Metric Imperial

Corner – Left as found Found and tagged Established Reestablished Rebuilt

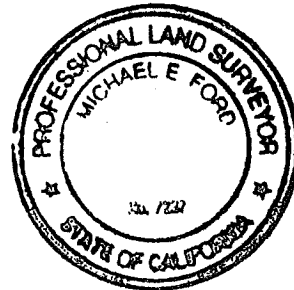
Identification and type of corner found: Evidence used to identify or procedure used to establish or reestablish the corner:

Street monuments per Book 11 of Record Maps, Page 11 were found in record position and used to reestablish the location of Lot 14 shown on said map.

A description of the physical condition of the monument as found and as set or reset: Set 1/2" iron pipes L.S. 7237

SURVEYOR'S STATEMENT

This Corner Record was prepared by me or under my direction in conformance with the Land Surveyor's Act on Act 1 2013
Signed Michael E Ford P.L.S. or R.C.E. No. 8/6/13



COUNTY SURVEYOR'S STATEMENT

This Corner Record was received AUGUST 9, 2013
and examined and filed SEPTEMBER 9th 2013
Signed Richard G. Simonitch P.L.S. or R.C.E. No. 7821
Title DEPUTY CO. SURVEYOR



County Surveyor's Comment

radial bearing at Point of non-tangency needed for accurate closure, otherwise solve by trig.

LEGEND

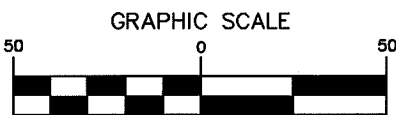
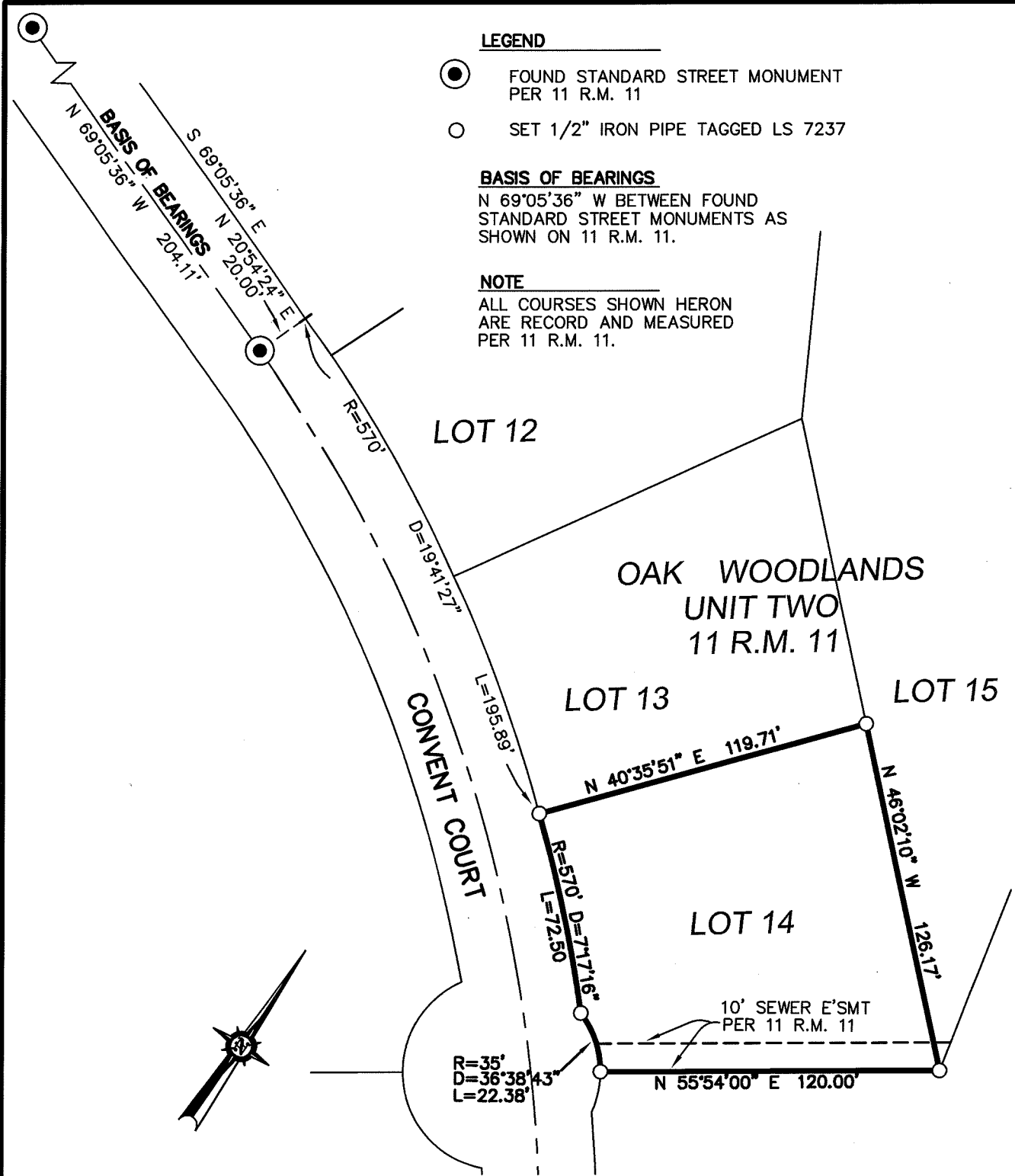
- FOUND STANDARD STREET MONUMENT PER 11 R.M. 11
- SET 1/2" IRON PIPE TAGGED LS 7237

BASIS OF BEARINGS

N 69°05'36" W BETWEEN FOUND STANDARD STREET MONUMENTS AS SHOWN ON 11 R.M. 11.

NOTE

ALL COURSES SHOWN HERON ARE RECORD AND MEASURED PER 11 R.M. 11.



michael ford inc.
land surveying

2300 bethards drive, suite J
santa rosa, california 95405
p 707.542.8513 - f 707.542.1825
www.michaelfordinc.com