

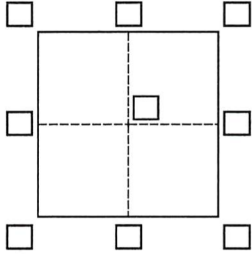
CORNER RECORD

Agency Index DPW #19-091

Document Number AP# 015-292-15

City of San Rafael County of Marin, California

Brief Legal Description Lot 26, 11 RM 11



CORNER TYPE

- Government Corner Control
 Meander Property
 Rancho Other

Date of Survey July 24, 2019

COORDINATES (Optional)

N. _____ E. _____

Elevation _____

Units Metric U.S. Survey Foot

Horizontal Datum _____

Zone _____ Epoch Date _____

Vertical Datum _____

Complies with Public Resources Code §§8801-8819

Complies with Public Resources Code §§8890-8902

PLS Act Ref.: 8765(d) 8771 8773 Other:

Corner/Monument: Left as found Established Rebuilt Pre-Construction
 Found and tagged Reestablished Referenced Post-Construction

Narrative of corner identified and monument as found, set, reset, replaced, or removed:

See sheet #2 for description(s):

Though 11 RM 11 doesn't indicate that monuments were set at subdivision lot corners, the found 1/2" IP & Cap shown was set by the same RCE who created the Record Map. This is consistent with the Cor.Rec. filed for AP#015-291-03 across the street. Searched for monument at the NE corner was not found.

SURVEYOR'S STATEMENT

This Corner Record was prepared by me or under my direction in conformance with

the Professional Land Surveyors' Act on July 25, 2019

Signed Jay C. H. P.L.S. or R.C.E. No. 30465



COUNTY SURVEYOR'S STATEMENT

This Corner Record was received July 30, 2019

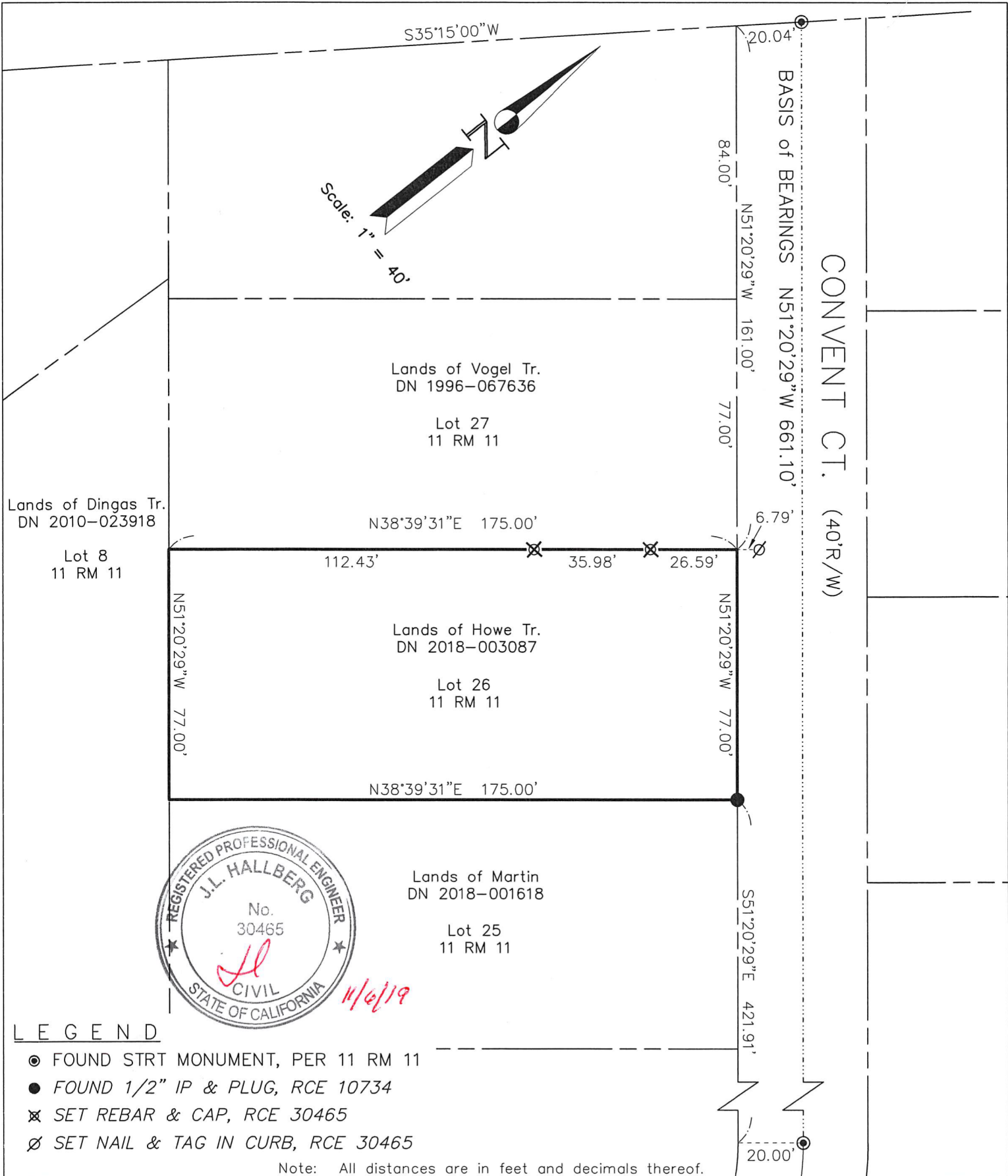
and examined and filed MAR. 05, 2020

Signed J.R. Semerad P.L.S. or R.C.E. No. 9292

Title DEPUTY C.S.

County Surveyor's Comment





LEGEND

- FOUND STRT MONUMENT, PER 11 RM 11
- FOUND 1/2" IP & PLUG, RCE 10734
- ⊗ SET REBAR & CAP, RCE 30465
- ∅ SET NAIL & TAG IN CURB, RCE 30465

Note: All distances are in feet and decimals thereof.

Linetype Legend

- Subject parcel
- Parcel boundary
- Old boundary, easement
- Boundary tie
- Right of Way center-line
- Fence
- Basis of Bearings

Date: Nov 2019 Scale: 1" = 40'

J.L. ENGINEERING
 1539 4th ST.
 San Rafael, CA. 94901
 (415) 457-6647
 2019-044\DWG\2019-044-BASE.CREC

Corner Record

Lands of Howe Tr. - 133 Convent Ct.
 APN 015-292-15, San Rafael, Marin County, CA
 Sheet: 1 of 2