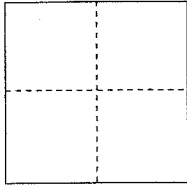


CORNER RECORD

Documented Number AP # 15-282-54

City of San Rafael County of Marin, California

Brief Legal Description Lot 24, as shown on "Map of Dominican Heights Unit 1 (10RM77)"



CORNER TYPE

Government Corner Control

Meander Property

Rancho Other

COORDINATES(Optional)

N. _____

E. _____

Zone NAD27 NAD83

NAD83 Epoch _____

Elevation _____

Vert. Datum: NGVD 29 NADV88

Meas. Units: Metric Imperial

Date of Survey Nov. 12, 2013

Corner- Left as found Found and tagged Established Reestablished Rebuilt

Identification and type of corner found: Evidence used to identify or procedure used to establish or reestablish the corner:

Found Standard Street Monuments per Record Map (10-RM- 77) See page 2 of 2

A description of the physical condition of the monument as found and as set or reset: _____

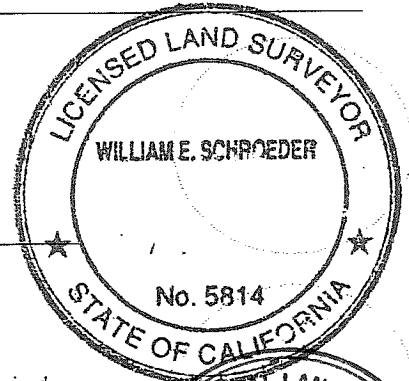
Set 3/4" Iron Pipe w/Plastic Plug LS "5814", See Page 2 of 2

SURVEYOR'S STATEMENT

This Corner Record was prepared by me or under my direction in conformance with

the Land Surveyor's Act on December 9, 2013

Signed *William E. Schroeder* P.L.S. or R.C.E. No.: 5814



COUNTY SURVEYOR'S STATEMENT

This Corner Record was received DECEMBER 9, 2013 and examined

and filed FEBRUARY 7, 2014

Signed *Richard G. Simonitch* P.L.S. or R.C.E. No.: 7821

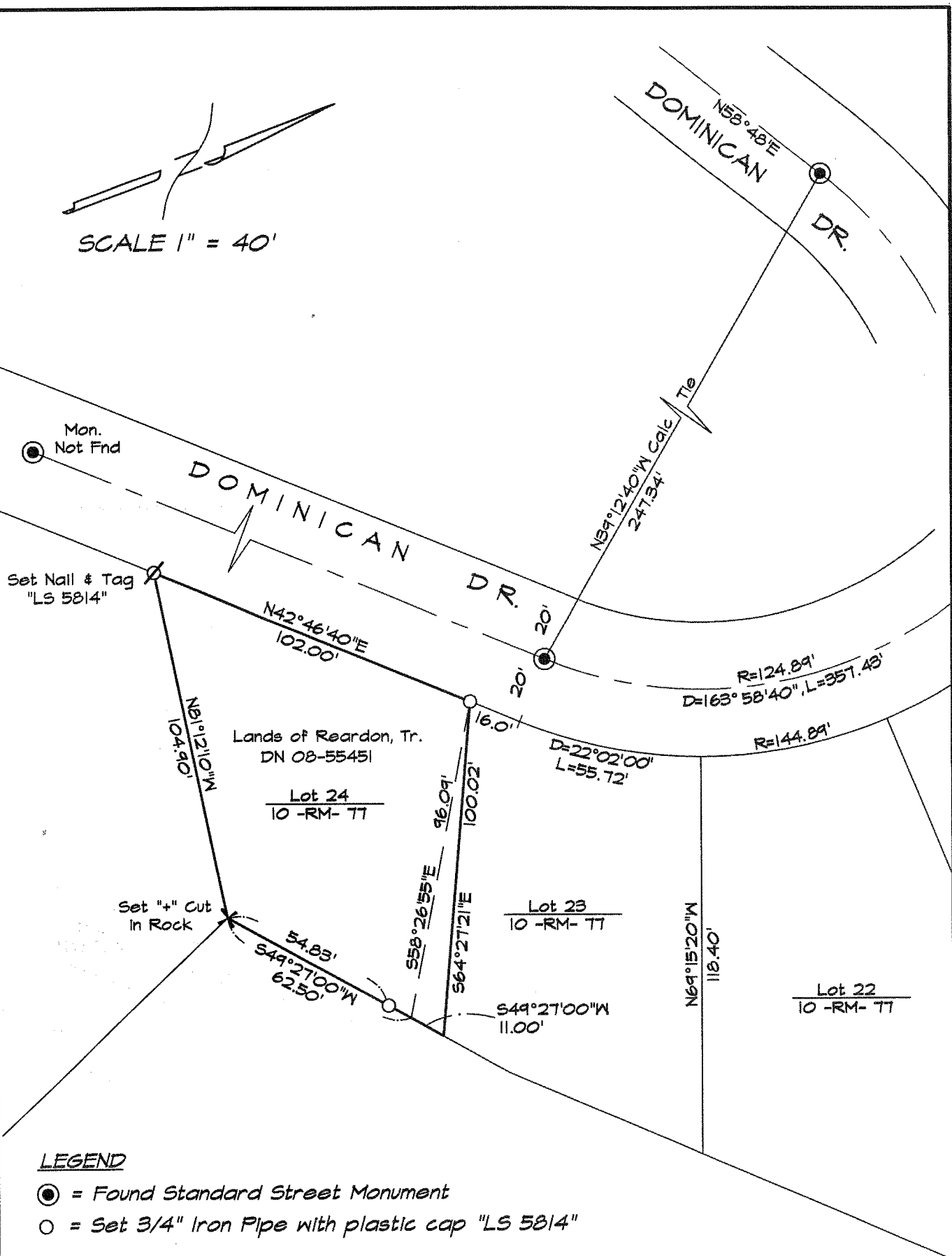


Title DEPUTY

County Surveyor's Comment _____



SCALE 1" = 40'



LEGEND

- = Found Standard Street Monument
- = Set 3/4" Iron Pipe with plastic cap "LS 5814"