

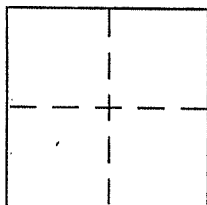
CORNER RECORD

Document Number A.P. # 15-282-43

City of SAN RAFAEL

County of MARIN, California

Brief Legal Description NORTHERLY LINE LOT 27, 10 RM 77



CORNER TYPE

Government Corner Control
Meander Property
Rancho Other
Date of Survey 6/4/02

COORDINATES (Optional)

N. _____
E. _____
Zone _____ NAD27 NAD83
NAD83 Epoch _____
Elev. _____
Vert. Datum: NGVD29 NAVD88
Meas. Units: Metric Imperial

Corner - Left as found Found and tagged Established Reestablished Rebuilt

Identification and type of corner found: Evidence used to identify or procedure used to establish or reestablish the corner:

FOUND STD. ST. MONUMENTS AS SHOWN ON
10 RM 77 AND ON REVERSE.

A description of the physical condition of the monument as found and as set or reset: SET 3/4"

IRON PIPE & TAG @ THE NW COR. LOT 27 AND
SET TAG IN 4" X 4" AT THE NE COR. OF LOT 27

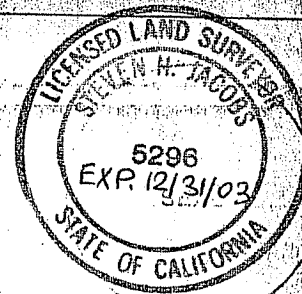
AP # 015-282-43

SURVEYOR'S STATEMENT

This Corner Record was prepared by me or under my direction in conformance with

the Land Surveyor's Act on JUNE 7, 2002

Signed [Signature] P.L.S or R.C.E. No. PLS 5296



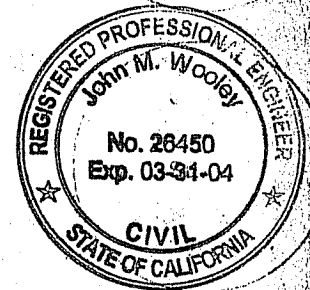
COUNTY SURVEYOR'S STATEMENT

This Corner Record was received JULY 16, 2002

and examined and filed JULY 24, 2002

Signed [Signature] P.L.S or R.C.E. No. 26450

Title DEPUTY

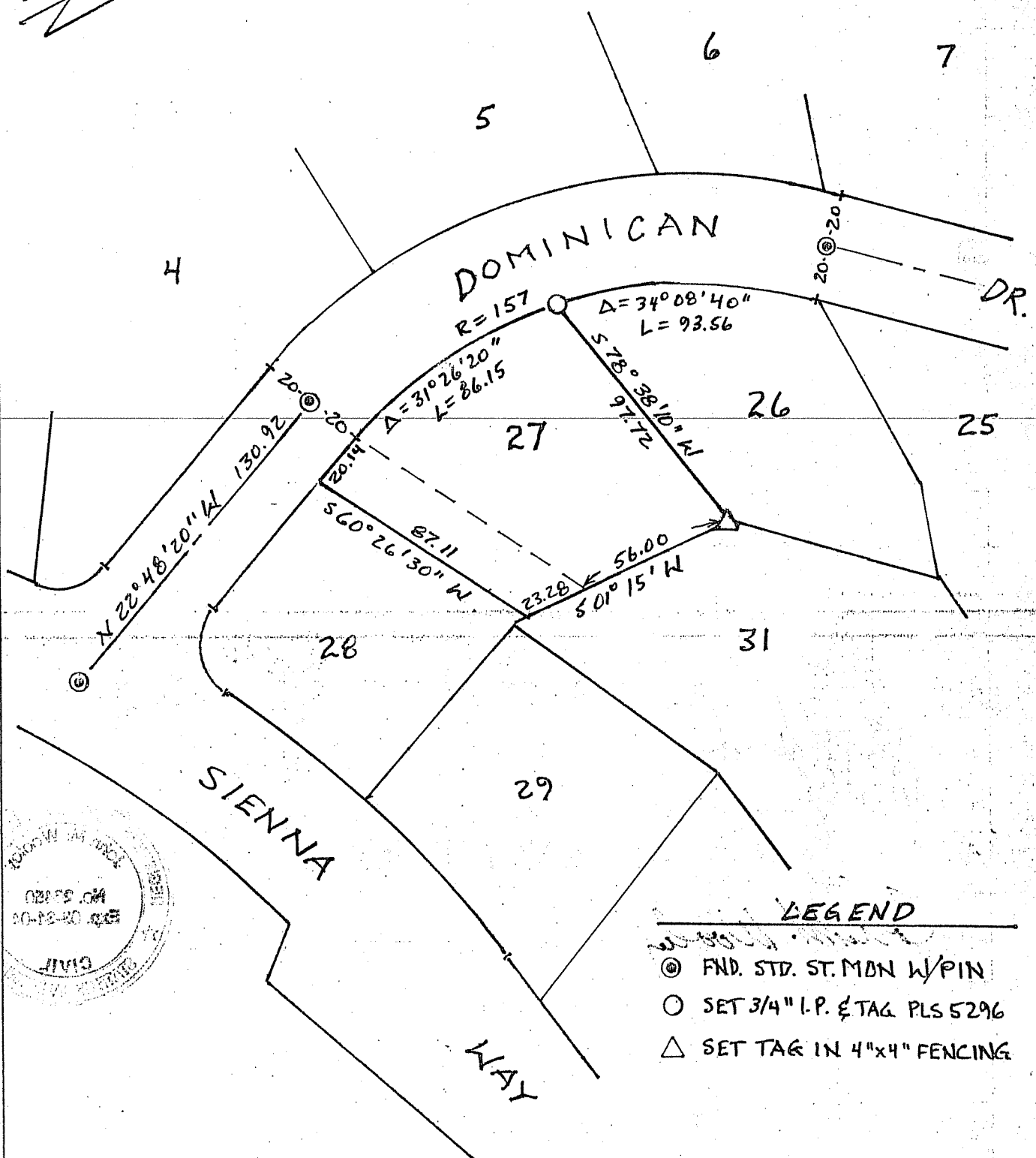


County Surveyor's Comment _____

SCALE: 1" = 50'

SAN RAFAEL

10 RM 77



LEGEND

- ⊙ FND. STD. ST. MON W/PIN
- SET 3/4" I.P. & TAG PLS 5296
- △ SET TAG IN 4"x4" FENCING

