

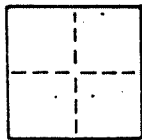
CORNER RECORD

1 of 5

COUNTY OF MARIN T. _____ R. _____ MERIDIAN _____ CALIFORNIA

CORNER TYPE: GOVT. CORNER MEANDER RANCHO CONTROL OTHER

CORNER IDENTIFICATION — DATE OF VISIT 1 FEB 1991



AP 15-282-24

CORNER — LEFT AS FOUND FOUND AND TAGGED REESTABLISHED OBLITERATED CORNER REBUILT

PHYSICAL DESCRIPTION OF CORNER FOUND; EVIDENCE AND METHOD USED TO IDENTIFY OR REESTABLISH

FD. STD. ST. MON. PER 10-RM-126

PHYSICAL DESCRIPTION OF MONUMENTS REBUILT OR PERPETUATED

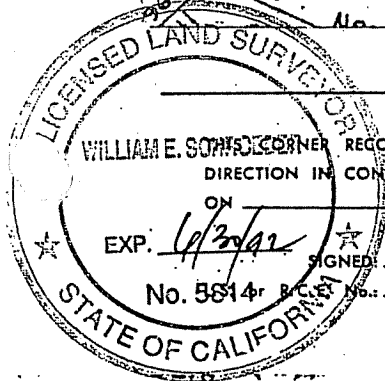
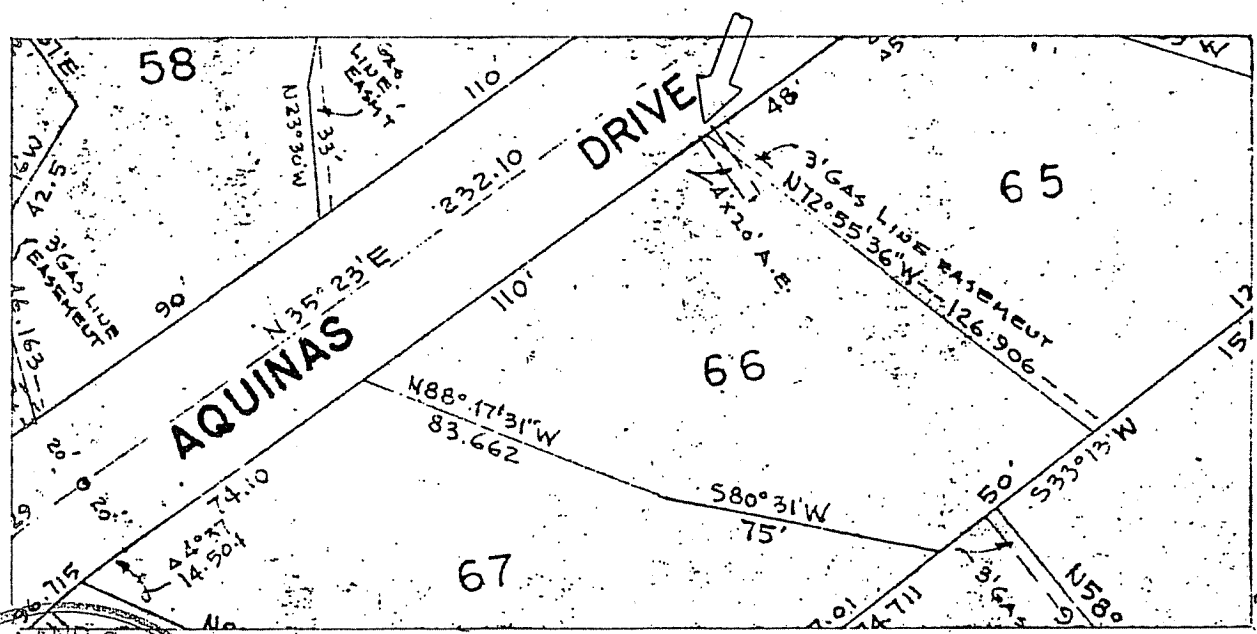
SET 3/4" I.D. IRON PIPE & PLASTIC PLUG "LS 5814"

CALIFORNIA COORDINATE SYSTEM ORDER: FIRST SECOND THIRD

STATIONS USED: NGS (USC & GS) STATE COUNTY OTHER STATION _____ STATION _____

ZONE _____ ELEVATION _____ NORTHINGS (Y) _____ EASTINGS (X) _____

SKETCH: (Include reference tie or witness points, remarks and topo of area)



SURVEYOR'S CERTIFICATE

THIS CORNER RECORD WAS PREPARED BY ME OR UNDER MY DIRECTION IN CONFORMANCE WITH THE LAND SURVEYORS ACT

ON 3/25 1991

SIGNED: William E. Somers

No. 5814

SEAL

COUNTY SURVEYOR'S CERTIFICATE

THE CORNER RECORD WAS RECEIVED, EXAMINED AND FILED

BY: _____

TITLE: _____

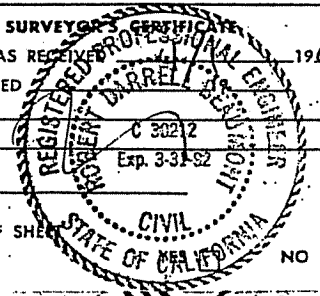
DOCUMENT No. _____

STATEMENT ON BACK OF SHEET _____

1991

C 30212
Exp. 3-31-92

NO



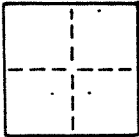
CORNER RECORD

2 OF 5

COUNTY OF MARIN T. _____ R. _____ MERIDIAN _____ CALIFORNIA

CORNER TYPE: GOVT. CORNER MEANDER RANCHO CONTROL OTHER

CORNER IDENTIFICATION — DATE OF VISIT 1 FEB. 1991



AP 15-282-24

CORNER — LEFT AS FOUND FOUND AND TAGGED REESTABLISHED OBLITERATED CORNER REBUILT

PHYSICAL DESCRIPTION OF CORNER FOUND; EVIDENCE AND METHOD USED TO IDENTIFY OR REESTABLISH

FD. STD. ST. MON. PER 10-RM-126

PHYSICAL DESCRIPTION OF MONUMENTS REBUILT OR PERPETUATED

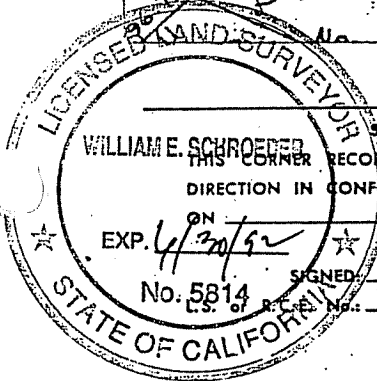
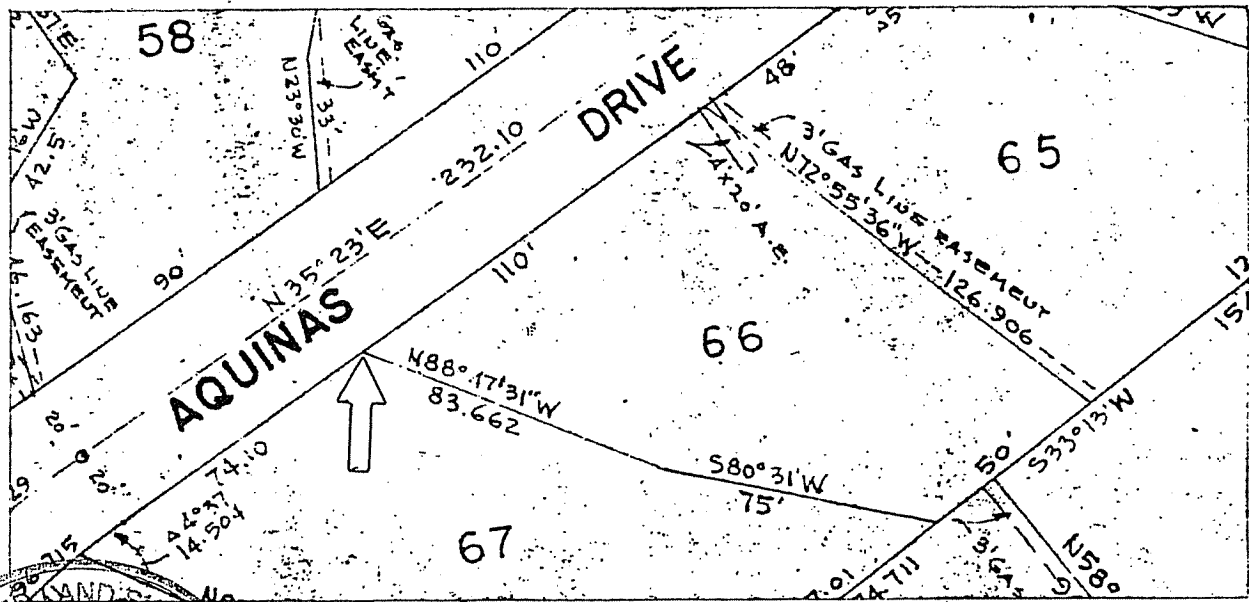
SET 3/4" I.D. IRON PIPE & PLASTIC PLUG "LS 5814"

CALIFORNIA COORDINATE SYSTEM ORDER: FIRST SECOND THIRD

STATIONS USED: NGS (USC & GS) STATE COUNTY OTHER STATION _____ STATION _____

ZONE _____ ELEVATION _____ NORTHINGS (Y) _____ EASTINGS (X) _____

SKETCH: (Include reference tie or witness points, remarks and topo of area)



SURVEYOR'S CERTIFICATE

THIS CORNER RECORD WAS PREPARED BY ME OR UNDER MY DIRECTION IN CONFORMANCE WITH THE LAND SURVEYORS ACT

ON 2/25 1991

SIGNED: *William E. Schroeder*

No. 5814

SEAL

COUNTY SURVEYOR'S CERTIFICATE

THE CORNER RECORD WAS RECEIVED, EXAMINED AND FILED

BY: _____

TITLE: _____

DOCUMENT No. _____

STATEMENT ON BACK OF SHEET _____

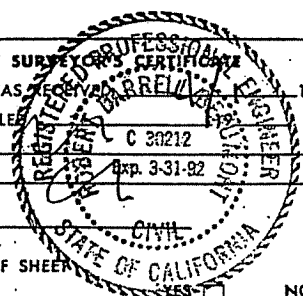
19 91

REGISTERED PROFESSIONAL ENGINEER

C 30212

Exp. 3-31-92

STATE OF CALIFORNIA



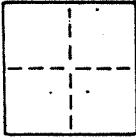
CORNER RECORD

3 OF 5

COUNTY OF MARIN T. _____ R. _____ MERIDIAN _____ CALIFORNIA

CORNER TYPE: GOVT. CORNER MEANDER RANCHO CONTROL OTHER

CORNER IDENTIFICATION — DATE OF VISIT 1 FEB 1991



AP 15-282-24

CORNER — LEFT AS FOUND FOUND AND TAGGED REESTABLISHED OBLITERATED CORNER REBUILT

PHYSICAL DESCRIPTION OF CORNER FOUND; EVIDENCE AND METHOD USED TO IDENTIFY OR REESTABLISH

FD. STD. ST. MON. PER 10-RM-126

PHYSICAL DESCRIPTION OF MONUMENTS REBUILT OR PERPETUATED

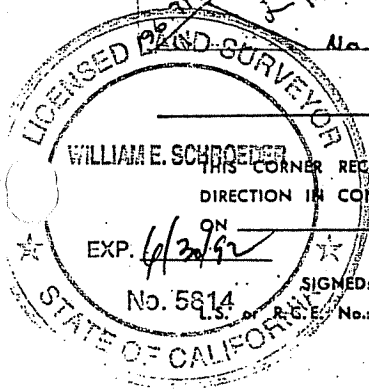
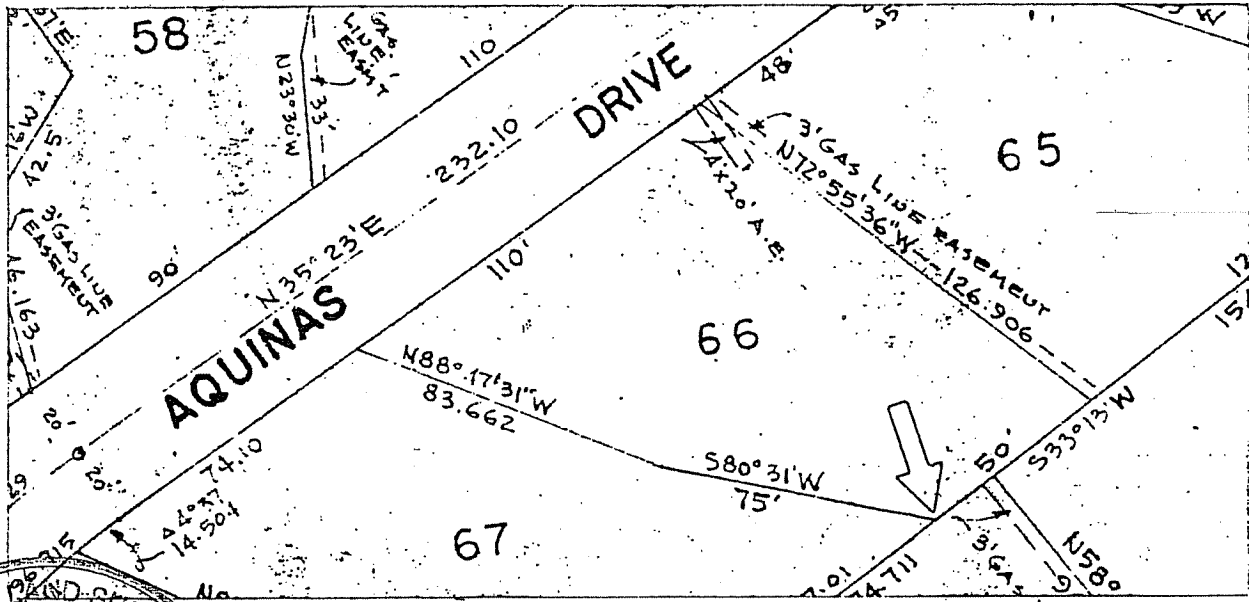
SET 3/4" I.D. IRON PIPE & PLASTIC PLUG "LS 5814"

CALIFORNIA COORDINATE SYSTEM ORDER: FIRST SECOND THIRD

STATIONS USED: NGS (USC & GS) STATE COUNTY OTHER STATION _____ STATION _____

ZONE _____ ELEVATION _____ NORTHINGS (Y) _____ EASTINGS (X) _____

SKETCH: (Include reference tie or witness points, remarks and topo of area)



SURVEYOR'S CERTIFICATE

THIS CORNER RECORD WAS PREPARED BY ME OR UNDER MY DIRECTION IN CONFORMANCE WITH THE LAND SURVEYORS ACT

ON 2/25/91

SIGNED: William E. Schroeder

REG. EXP. No. _____

SEAL

COUNTY SURVEYOR RECEIVED

THE CORNER RECORD WAS RECEIVED, EXAMINED AND FILED _____ 19 91

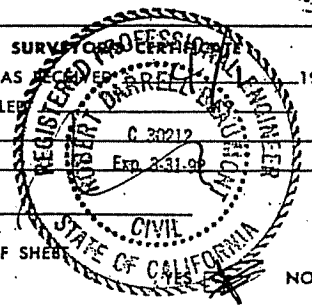
BY: _____

TITLE: _____

DOCUMENT No. _____

STATEMENT ON BACK OF SHEET _____

NO



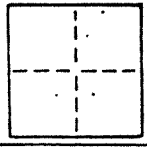
CORNER RECORD

4055 ✓

COUNTY OF MARIN T. _____ R. _____ MERIDIAN _____ CALIFORNIA

CORNER TYPE: GOV'T. CORNER MEANDER RANCHO CONTROL OTHER

CORNER IDENTIFICATION — DATE OF VISIT 1 FEB 1991



AP 15-282-24

CORNER — LEFT AS FOUND FOUND AND TAGGED REESTABLISHED OBLITERATED CORNER REBUILT

PHYSICAL DESCRIPTION OF CORNER FOUND; EVIDENCE AND METHOD USED TO IDENTIFY OR REESTABLISH

FD. STD. ST. MON. PER 10-RM-126

PHYSICAL DESCRIPTION OF MONUMENTS REBUILT OR PERPETUATED

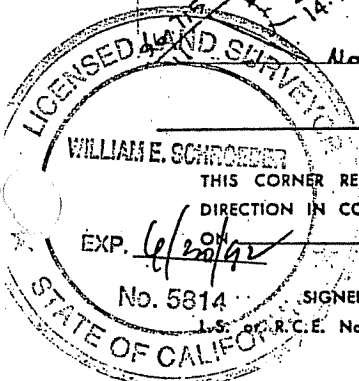
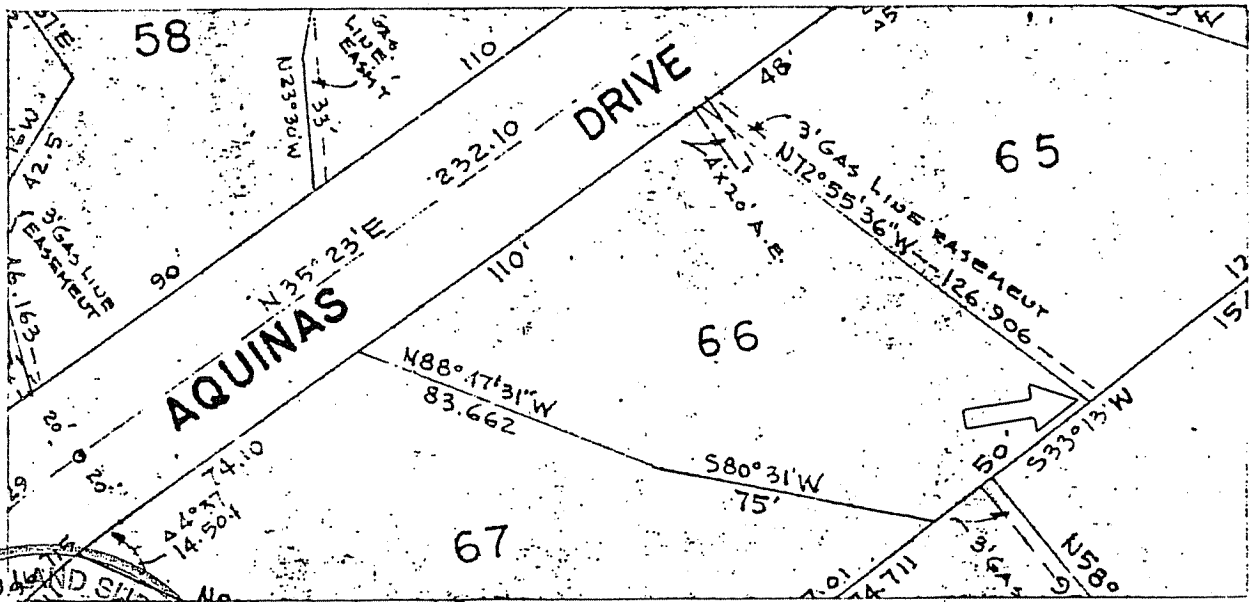
SET 3/4" I.D. IRON PIPE & PLASTIC PLUG "LS 5814"

CALIFORNIA COORDINATE SYSTEM ORDER: FIRST SECOND THIRD

STATIONS USED: NGS (USC & GS) STATE COUNTY OTHER STATION _____ STATION _____

ZONE _____ ELEVATION _____ NORTHINGS (Y) _____ EASTINGS (X) _____

SKETCH: (Include reference tie or witness points, remarks and topo of area)



SURVEYOR'S CERTIFICATE

THIS CORNER RECORD WAS PREPARED BY ME OR UNDER MY DIRECTION IN CONFORMANCE WITH THE LAND SURVEYORS ACT

SIGNED: *William E. Schroeder* 19 91

Exp. 3/25

SEAL

COUNTY SURVEYOR'S CERTIFICATE

THE CORNER RECORD WAS RECEIVED AND EXAMINED AND FILED

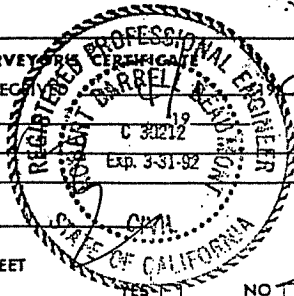
BY: _____

TITLE: _____

DOCUMENT No. _____

STATEMENT ON BACK OF SHEET

YES NO



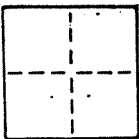
CORNER RECORD

5065

COUNTY OF MARIN T. _____ R. _____ MERIDIAN CALIFORNIA

CORNER TYPE: GOVT. CORNER MEANDER RANCHO CONTROL OTHER

CORNER IDENTIFICATION — DATE OF VISIT 1 FEB 1991



AP 15-282-24

CORNER — LEFT AS FOUND FOUND AND TAGGED REESTABLISHED OBLITERATED CORNER REBUILT

PHYSICAL DESCRIPTION OF CORNER FOUND; EVIDENCE AND METHOD USED TO IDENTIFY OR REESTABLISH

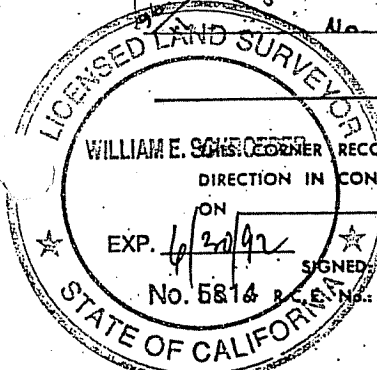
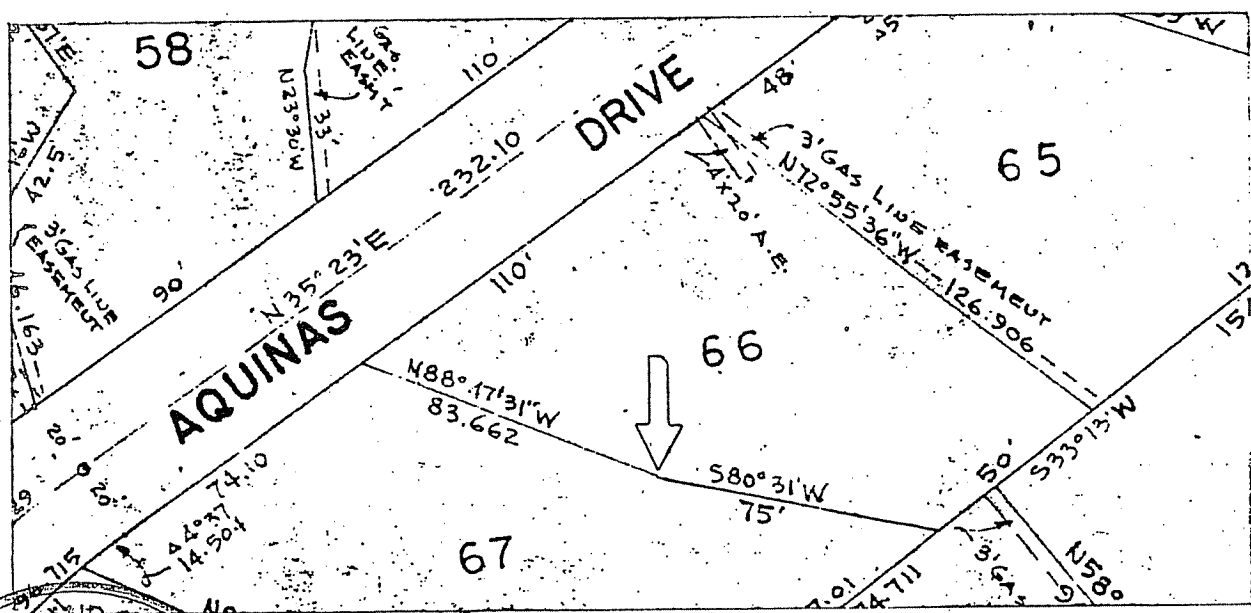
FD. STD. ST. MON. PER 10-RM-126

PHYSICAL DESCRIPTION OF MONUMENTS REBUILT OR PERPETUATED

SET 3/4" I.D. IRON PIPE & PLASTIC PLUG "LS 5814"

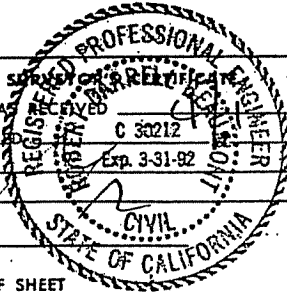
CALIFORNIA COORDINATE SYSTEM ORDER: FIRST SECOND THIRD
STATIONS USED: NGS (USC & GS) STATE COUNTY OTHER STATION _____ STATION _____
ZONE _____ ELEVATION _____ NORTHINGS (Y) _____ EASTINGS (X) _____

SKETCH: (Include reference tie or witness points, remarks and topo of area)



SURVEYOR'S CERTIFICATE
THIS CORNER RECORD WAS PREPARED BY ME OR UNDER MY DIRECTION IN CONFORMANCE WITH THE LAND SURVEYORS ACT ON 3/25 1991
SIGNED: William Schroeder

SEAL



COUNTY SURVEYOR'S RECEIVED
THE CORNER RECORD WAS RECEIVED AND EXAMINED AND FILED IN _____ 1991
BY: _____
TITLE: _____
DOCUMENT No. _____
STATEMENT ON BACK OF SHEET YES NO