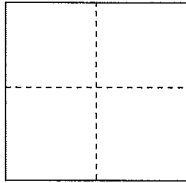


# CORNER RECORD

Documented Number AP # 15-282-10

City of San Rafael County of Marin, California

Brief Legal Description Lot 22, as shown on "Map of Dominican Heights Unit 1 (10RM77)



### CORNER TYPE

Government Corner  Control   
Meander  Property   
Rancho  Other

### COORDINATES(Optional)

N. \_\_\_\_\_  
E. \_\_\_\_\_  
Zone \_\_\_\_\_ NAD27  NAD83   
NAD83 Epoch \_\_\_\_\_  
Elevation \_\_\_\_\_  
Vert. Datum: NGVD 29  NADV88   
Meas. Units: Metric  Imperial

Date of Survey Sept 5, 2013

Corner- Left as found  Found and tagged  Established  Reestablished  Rebuilt

Identification and type of corner found: Evidence used to identify or procedure used to establish or reestablish the corner:

Found Standard Street Monuments per Record Map (10-RM- 77) See page 2 of 2

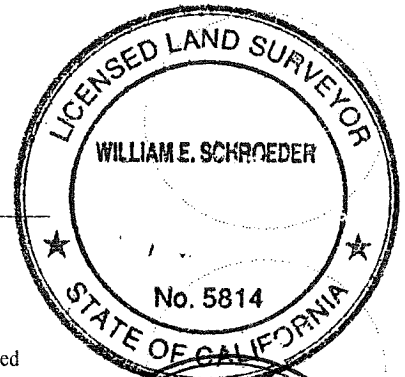
A description of the physical condition of the monument as found and as set or reset:

Set 3/4" Iron Pipe w/Plastic Plug LS "5814", Found Rebar and Cap LS "3887", See Page 2 of 2

### SURVEYOR'S STATEMENT

This Corner Record was prepared by me or under my direction in conformance with the Land Surveyor's Act on Dec. 09, 2013

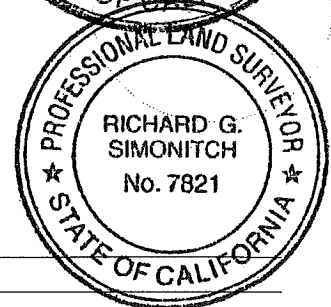
Signed William E. Schroeder P.L.S. or R.C.E. No.: 5814



### COUNTY SURVEYOR'S STATEMENT

This Corner Record was received DECEMBER 9, 2013 and examined and filed DECEMBER 12, 2013

Signed Richard G. Simonitch P.L.S. or R.C.E. No.: 7821

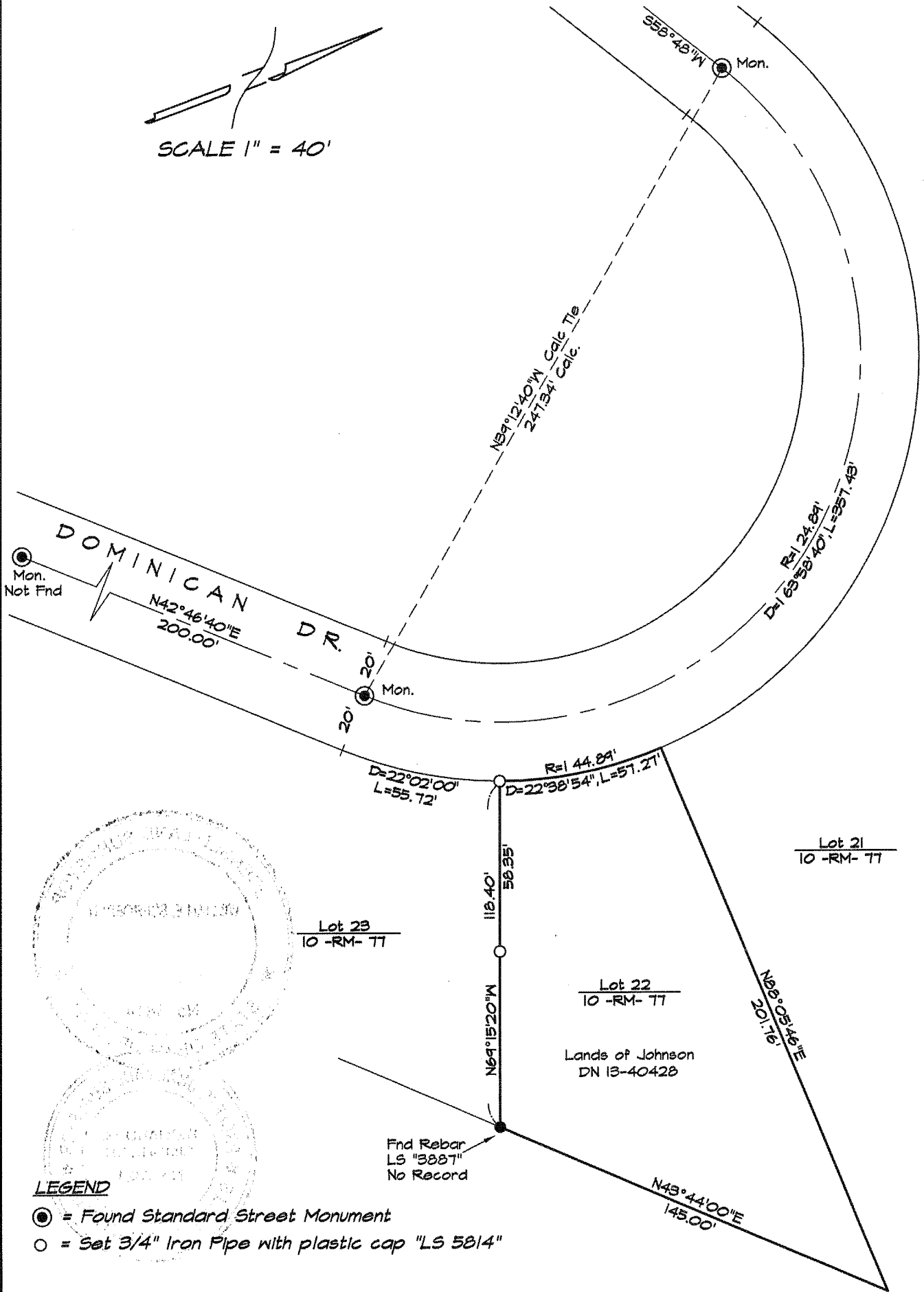


Title DEPUTY CO. SURVEYOR

County Surveyor's Comment \_\_\_\_\_



SCALE 1" = 40'



Mon.  
Not Fnd

DOMINICAN DR.  
N42°46'40"E  
200.00'

20'  
Mon.

N37°12'40"W Calc Tie  
247.34' Calc.

S55°48"W  
Mon.

R=124.89'  
D=165°58'40", L=357.43'

D=22°02'00"  
L=55.72'

R=44.89'  
D=22°38'54", L=57.27'

Lot 21  
10 -RM- 77

Lot 23  
10 -RM- 77

Lot 22  
10 -RM- 77

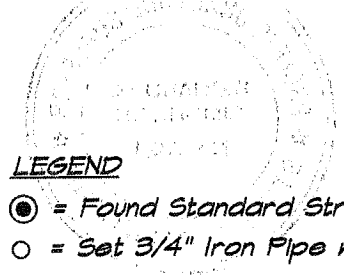
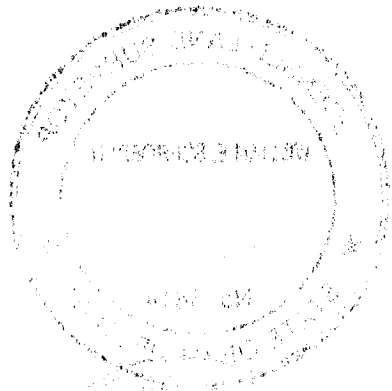
Lands of Johnson  
DN 13-4042B

N86°05'46"E  
201.76'

118.40'  
58.35'  
N69°15'20"W

Fnd Rebar  
LS "3887"  
No Record

N43°44'00"E  
145.00'



**LEGEND**

- = Found Standard Street Monument
- = Set 3/4" Iron Pipe with plastic cap "LS 5814"