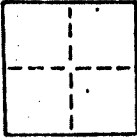


# CORNER RECORD

COUNTY OF Marin T. \_\_\_\_\_ R. \_\_\_\_\_ MERIDIAN \_\_\_\_\_ CALIFORNIA

CORNER TYPE: GOVT. CORNER  MEANDER  RANCHO  CONTROL  OTHER

CORNER IDENTIFICATION — DATE OF VISIT \_\_\_\_\_ 19\_\_\_\_



CORNER — LEFT AS FOUND  FOUND AND TAGGED  REESTABLISHED OBLITERATED CORNER  REBUILT

PHYSICAL DESCRIPTION OF CORNER FOUND; EVIDENCE AND METHOD USED TO IDENTIFY OR REESTABLISH  
 Found 2-1/2" Iron Pipe fence post at southwesterly corner of Lot 51; as shown upon that certain map entitled "Dominican Heights Unit Two" recorded in Book 10 of Maps at Page 126; Marin County Records. Note: A set concrete nail bears: N66 08'20"E 0.17 feet.

AP #15-281-27 Survey NO. 1696

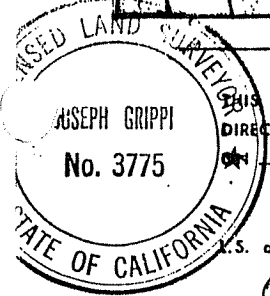
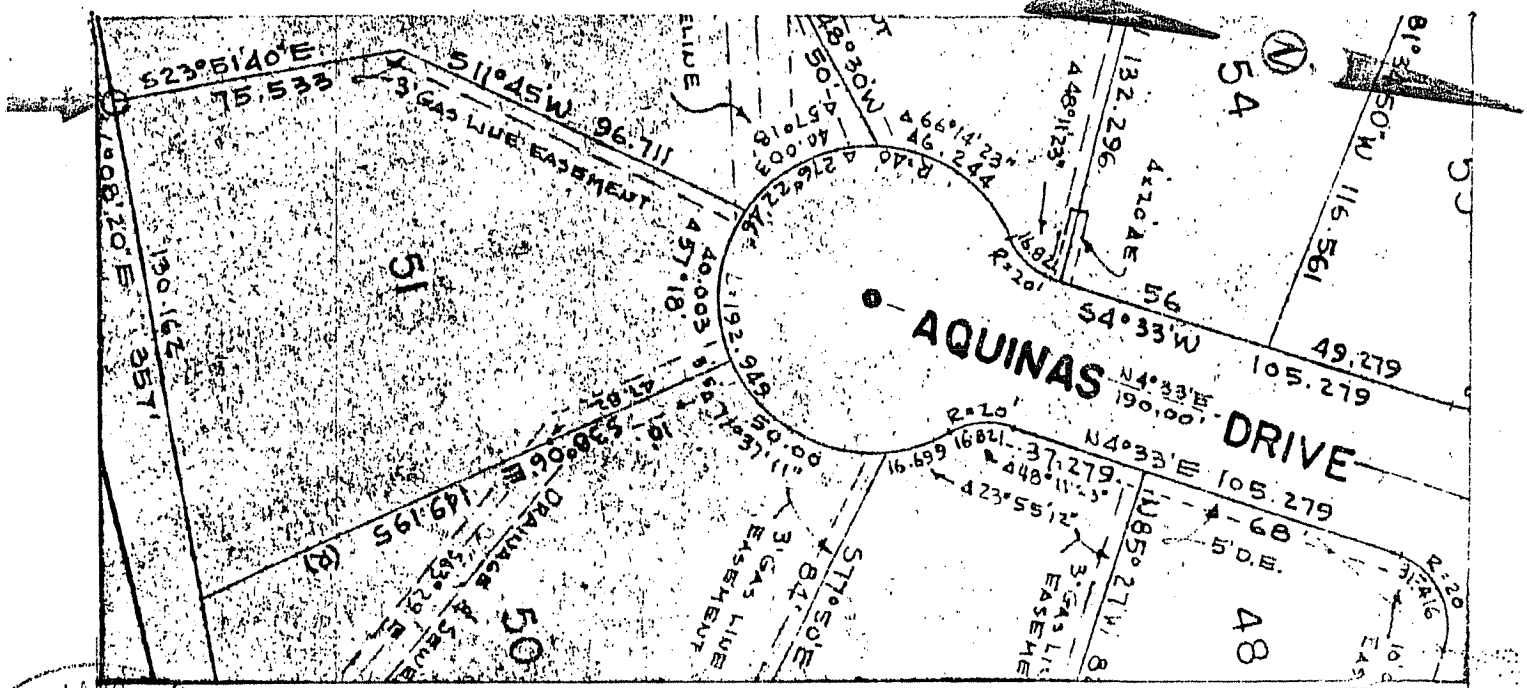
PHYSICAL DESCRIPTION OF MONUMENTS REBUILT OR PERPETUATED  
 As Shown

CALIFORNIA COORDINATE SYSTEM ORDER: FIRST  SECOND  THIRD

STATIONS USED: NGS (USC & GS)  STATE  COUNTY  OTHER  STATION \_\_\_\_\_ STATION \_\_\_\_\_

ZONE \_\_\_\_\_ ELEVATION \_\_\_\_\_ NORTHINGS (Y) \_\_\_\_\_ EASTINGS (X) \_\_\_\_\_

SKETCH: (Include reference tie or witness points, remarks and topo of area)



**SURVEYOR'S CERTIFICATE**  
 THIS CORNER RECORD WAS PREPARED BY ME OR UNDER MY DIRECTION IN CONFORMANCE WITH THE LAND SURVEYORS ACT  
 March 17, 1988 19\_\_\_\_

SIGNED: *[Signature]*  
 L.S. or R.C.E. No.: LS 3775 expires 12/31/91

**COUNTY SURVEYOR'S PROFESSIONAL ENGINEER CERTIFICATE**  
 THE CORNER RECORD WAS RECEIVED AND EXAMINED AND FILED  
 BY: *[Signature]* C 30212  
 TITLE: Deputy Exp. 3-31-92

DOCUMENT No. \_\_\_\_\_  
 STATEMENT ON BACK OF SHEET

SEAL

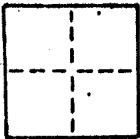
NO

### CORNER RECORD

COUNTY OF Marin T. \_\_\_\_\_ R. \_\_\_\_\_ MERIDIAN \_\_\_\_\_ CALIFORNIA

CORNER TYPE: GOVT. CORNER  MEANDER  RANCHO  CONTROL  OTHER

CORNER IDENTIFICATION — DATE OF VISIT \_\_\_\_\_ 19\_\_\_\_



CORNER — LEFT AS FOUND  FOUND AND TAGGED  REESTABLISHED OBLITERATED CORNER  REBUILT

PHYSICAL DESCRIPTION OF CORNER FOUND; EVIDENCE AND METHOD USED TO IDENTIFY OR REESTABLISH

Set 3/4" I.D. iron pipe with plastic plug "LS 3775", at the northeasterly corner of Lot 51, as shown upon that certain map entitled, "Dominican Heights Unit Two" recorded in Book 10 of Maps at Page 126; Marin County Records

AP #15-281-27 Survey No. 1696

PHYSICAL DESCRIPTION OF MONUMENTS REBUILT OR PERPETUATED

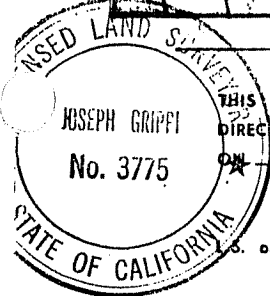
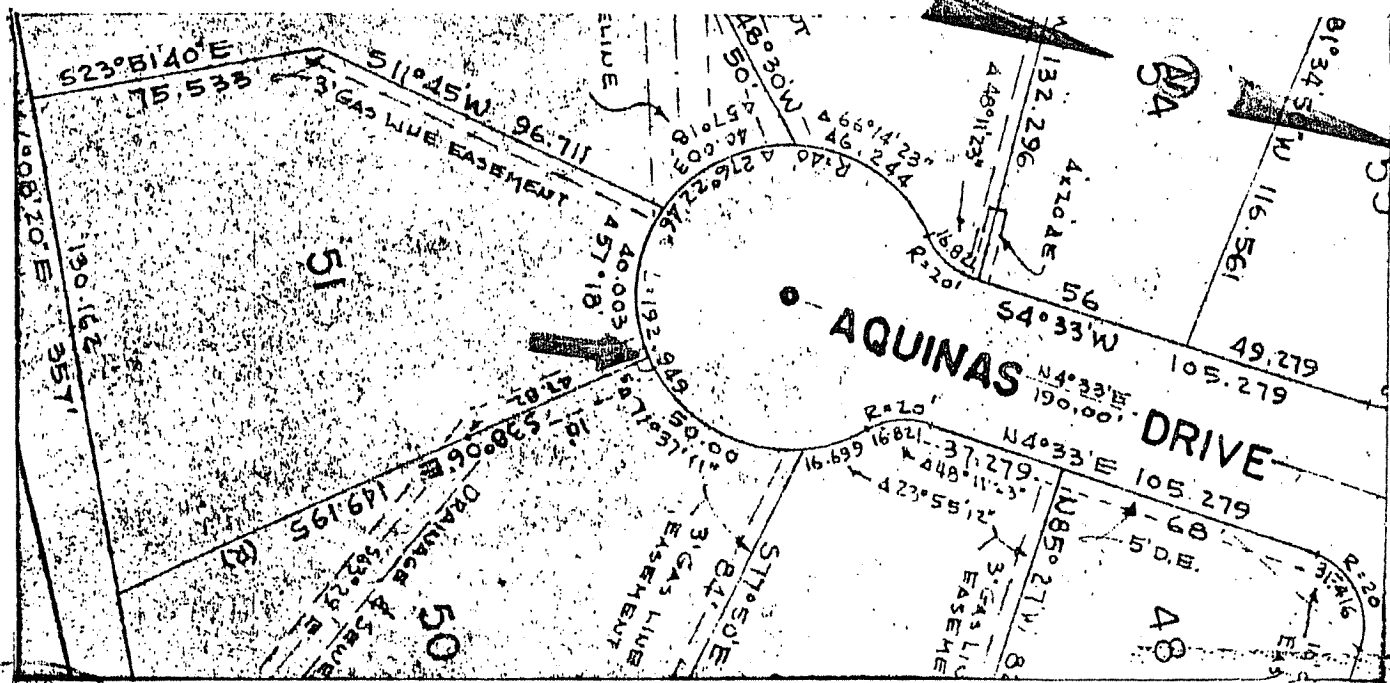
As shown

CALIFORNIA COORDINATE SYSTEM ORDER: FIRST  SECOND  THIRD

STATIONS USED: NGS (USC & GS)  STATE  COUNTY  OTHER  STATION \_\_\_\_\_ STATION \_\_\_\_\_

ZONE \_\_\_\_\_ ELEVATION \_\_\_\_\_ NORTHINGS (Y) \_\_\_\_\_ EASTINGS (X) \_\_\_\_\_

SKETCH: (Include reference tie or witness points, remarks and topo of area)



**SURVEYOR'S CERTIFICATE**

THIS CORNER RECORD WAS PREPARED BY ME OR UNDER MY DIRECTION IN CONFORMANCE WITH THE LAND SURVEYORS ACT ON March 17 1988

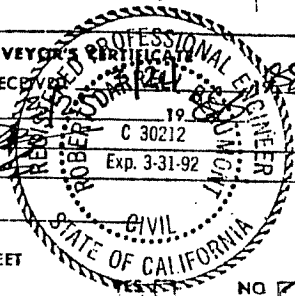
SIGNED: [Signature] expires 12/31/91  
No. of R.C.E. No. LS 3775

SEAL

**COUNTY SURVEYOR'S CERTIFICATE**

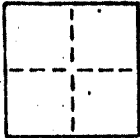
THE CORNER RECORD WAS RECEIVED AND EXAMINED AND FILED BY: [Signature] 1988  
C 30212  
Exp. 3-31-92

DOCUMENT No. \_\_\_\_\_  
STATEMENT ON BACK OF SHEET



**CORNER RECORD**

COUNTY OF Marin T. \_\_\_\_\_ R. \_\_\_\_\_ MERIDIAN \_\_\_\_\_ CALIFORNIA  
 CORNER TYPE: GOVT. CORNER  MEANDER  RANCHO  CONTROL  OTHER   
 CORNER IDENTIFICATION — DATE OF VISIT \_\_\_\_\_ 19\_\_



CORNER — LEFT AS FOUND  FOUND AND TAGGED  REESTABLISHED OBLITERATED CORNER  REBUILT

PHYSICAL DESCRIPTION OF CORNER FOUND; EVIDENCE AND METHOD USED TO IDENTIFY OR REESTABLISH

Set 3/4" I.D. iron pipe with plastic plug "LS 3775"; at the southeasterly corner of Lot 51, as shown upon that certain map entitled "Dominican Heights Unit Two", recorded in Book 10 of Maps at Page 126; Marin County Records.

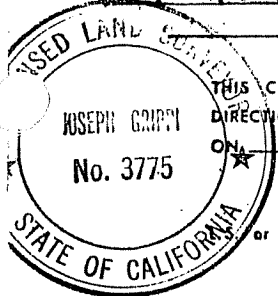
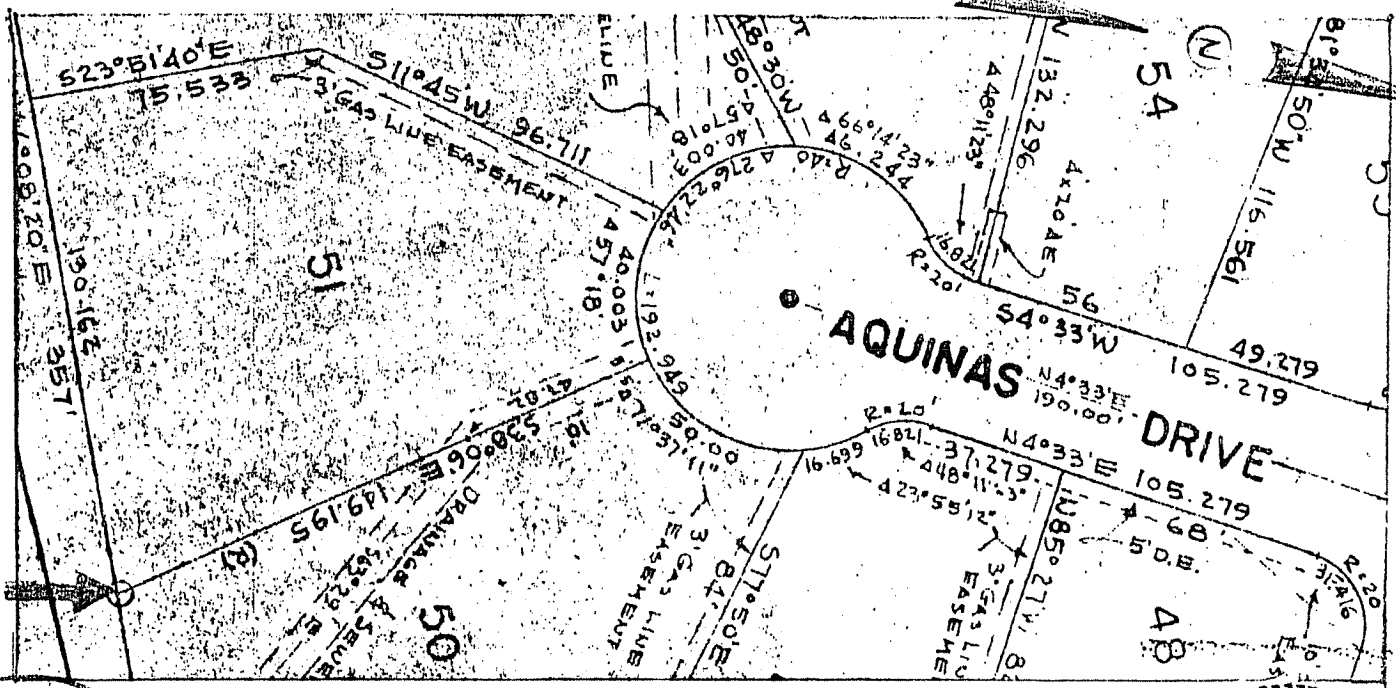
AP #15-281-27 Survey No. 1696

PHYSICAL DESCRIPTION OF MONUMENTS REBUILT OR PERPETUATED

As shown

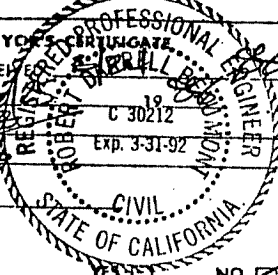
CALIFORNIA COORDINATE SYSTEM ORDER: FIRST  SECOND  THIRD   
 STATIONS USED: NGS (USC & GS)  STATE  COUNTY  OTHER  STATION \_\_\_\_\_ STATION \_\_\_\_\_  
 ZONE \_\_\_\_\_ ELEVATION \_\_\_\_\_ NORTHINGS (Y) \_\_\_\_\_ EASTINGS (X) \_\_\_\_\_

SKETCH: (Include reference tie or witness points, remarks and topo of area)



**SURVEYOR'S CERTIFICATE**  
 THIS CORNER RECORD WAS PREPARED BY ME OR UNDER MY DIRECTION IN CONFORMANCE WITH THE LAND SURVEYORS ACT ON March 17, 1988  
 SIGNED: *[Signature]*  
 or R.C.E. No. LS 3775 expires 12/31/91

**COUNTY SURVEYOR'S CERTIFICATE**  
 THE CORNER RECORD WAS RECEIVED BY ME, EXAMINED AND FILED IN THE COUNTY RECORDS ON 18 1988  
 BY: *[Signature]* C 30212  
 TITLE: LS 3775 Exp. 3-31-92  
 DOCUMENT No. \_\_\_\_\_  
 STATEMENT ON BACK OF SHEET



SEAL

YES  NO