

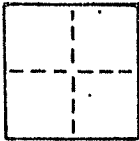
A.P. # 15-263-26

CORNER RECORD

COUNTY OF MARIN T. _____ R. _____ MERIDIAN _____ CALIFORNIA

CORNER TYPE: GOVT. CORNER MEANDER RANCHO CONTROL OTHER **RECEIVED**

CORNER IDENTIFICATION — DATE OF VISIT _____ 19__



MAY 23 1986

Marin County Public Works

CORNER — LEFT AS FOUND FOUND AND TAGGED REESTABLISHED OBLITERATED CORNER REBUILT

PHYSICAL DESCRIPTION OF CORNER FOUND; EVIDENCE AND METHOD USED TO IDENTIFY OR REESTABLISH

Set a 3/4" iron pipe with plastic plug embossed "IS 3775" at the most westerly corner of Document No. 82-38770, Marin County Records, by and per said document and by and per "Map of Oak Woodlands Unit One San Rafael, California" recorded in book 8 of Maps at page 105, Marin County Records, and referred to in the here-before mentioned document.

PHYSICAL DESCRIPTION OF MONUMENTS REBUILT OR PERPETUATED

As shown

AP No. 15-263-26

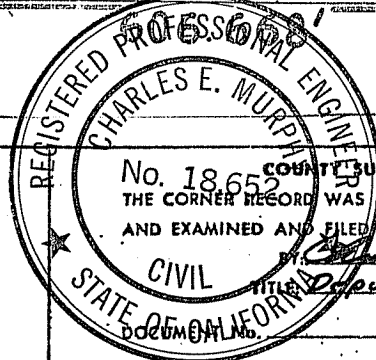
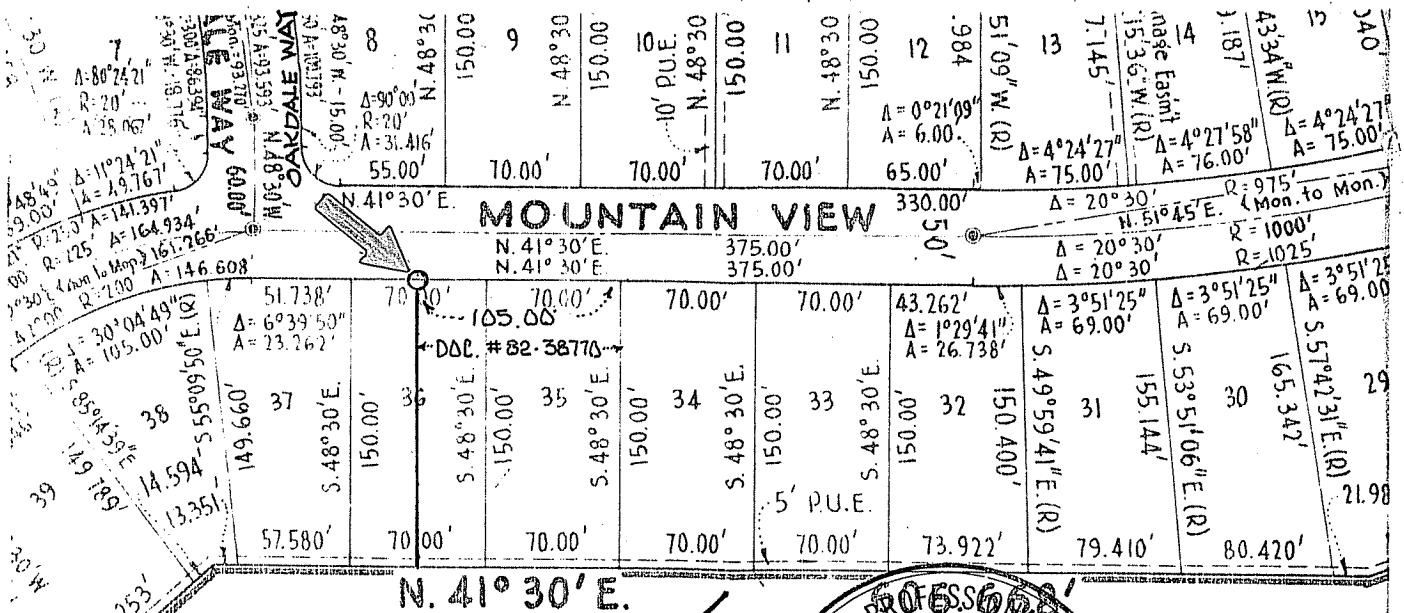
J 1477 Seymour

CALIFORNIA COORDINATE SYSTEM ORDER: FIRST SECOND THIRD

STATIONS USED: NGS (USC & GS) STATE COUNTY OTHER STATION _____ STATION _____

ZONE _____ ELEVATION _____ NORTHINGS (Y) _____ EASTINGS (X) _____

SKETCH: (Include reference tie or witness points, remarks and topo of area)



SURVEYOR'S CERTIFICATE

THIS CORNER RECORD WAS PREPARED BY ME OR UNDER MY DIRECTION IN CONFORMANCE WITH THE LAND SURVEYORS ACT ON May 15 1986

My Certificate Expires June 30, 1989

COUNTY SURVEYOR'S CERTIFICATE

THE CORNER RECORD WAS RECEIVED May 22 1986 AND EXAMINED AND FILED May 23 1986

Charles E. Murphy
Deputy County Surveyor

SIGNED: _____
L.S. or R.E. No.: _____

STATEMENT ON BACK OF SHEET

YES NO