

CORNER RECORD

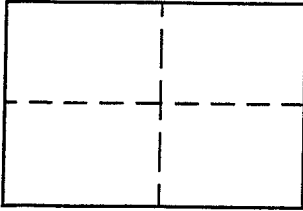
Document Number ROS 2002 M 071 APN 15-241-15416

City of San Rafael (portion) County of Marin, California

Brief Legal Description 387 Margarita Drive, San Rafael, CA 94901

CORNER TYPE

**COORDINATES
(Optional)**



Government Corner Control
Meander Property
Rancho Other
Date of Survey November 2, 2004

North _____
East _____
Zone _____ Datum _____
Elev. _____

Corner _____ Left as found Found and tagged Established Reestablished Rebuilt

Identification and type of corner found: Evidence used to identify or procedure used to establish or reestablish the corner:

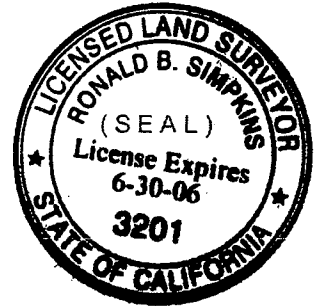
Three iron pipes along Margarita Drive, per ROS 2002 M 071.

A description of the physical condition of the monument as found and as set or reset: Remain in good condition.

SURVEYOR'S STATEMENT

This Corner Record was prepared by me or under my direction in conformance with the Land Surveyors' Act on January 3, 2005

Signed *Ronald B. Simpkins* L.S. or R.C.E. Number L.S. 3201



COUNTY SURVEYOR'S STATEMENT

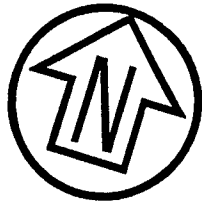
This Corner Record was received JANUARY 11, 2005

and examined and filed JANUARY 14, 2005

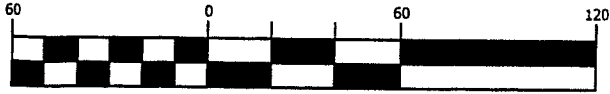
Signed *Craig Tackabery* Title COUNTY SURVEYOR



County Surveyor's Comment _____






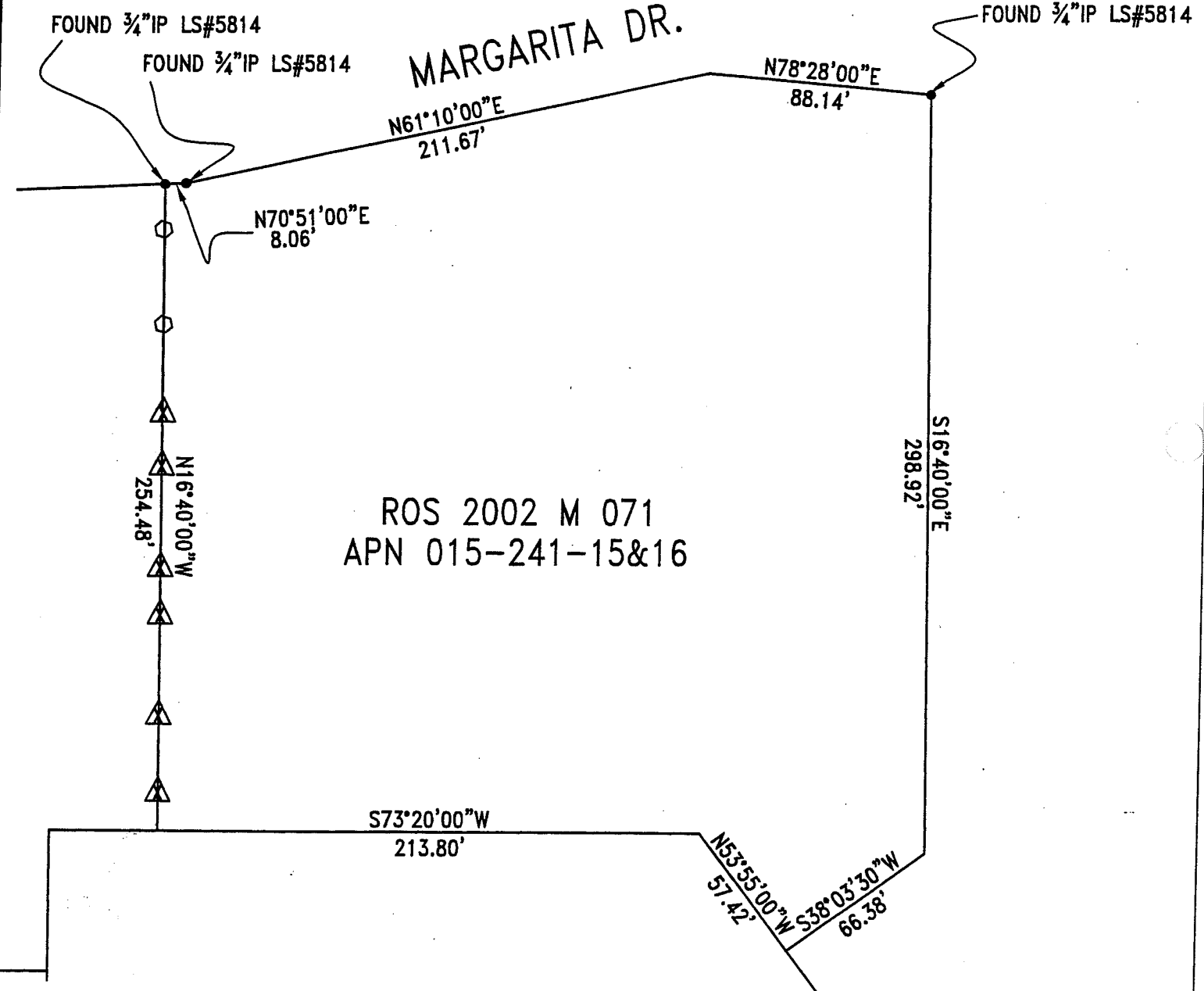
Graphic Scale (in feet)



1 inch = 60 ft.

LEGEND

-  SET 36" LATH & GINNIE
-  FOUND IP
-  FOUND HUB & TACK



ROS 2002 M 071
APN 015-241-15&16

CSW
[St]² CSW/STUBER-STROEH
ENGINEERING GROUP, INC.
CONSULTING ENGINEERS

790 DeLong Ave., Novato, CA. 94945-3246
(415) 892-4763 FAX (415) 892-4502

© 2005

REV.

01/05/05
SCALE: 1"=60'

CORNER RECORD
SCHEIDT RESIDENCE

SAN RAFAEL

MARIN

CALIFORNIA