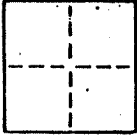


CORNER RECORD

COUNTY OF _____ T. _____ R. _____ MERIDIAN CALIFORNIA

CORNER TYPE: GOVT. CORNER MEANDER RANCHO CONTROL OTHER

CORNER IDENTIFICATION — DATE OF VISIT February 25 1988



CORNER — LEFT AS FOUND FOUND AND TAGGED REESTABLISHED OBLITERATED CORNER REBUILT

PHYSICAL DESCRIPTION OF CORNER FOUND, EVIDENCE AND METHOD USED TO IDENTIFY OR REESTABLISH

Found 3/4" iron pipe monuments as shown on Book 22 of Parcel Maps Page 22,

Marin County Records

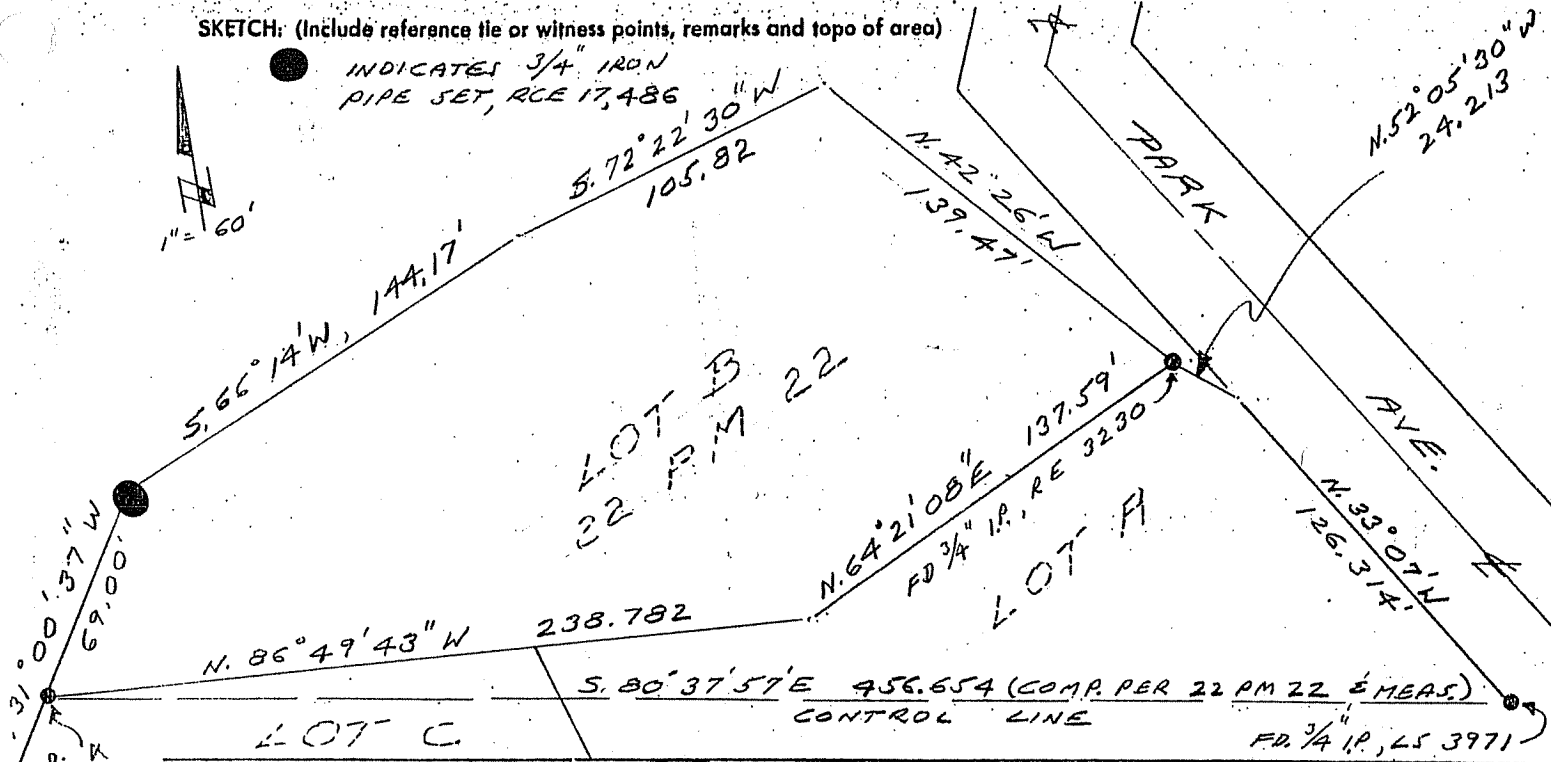
A. P. No. 15-231-19

PHYSICAL DESCRIPTION OF MONUMENTS, REBUILT OR PERPETUATED

Set 3/4" iron pipe tagged RCE 17,486 as indicated

CALIFORNIA COORDINATE SYSTEM ORDER: FIRST SECOND THIRD
STATIONS USED: NG5 (USC & GS) STATE COUNTY OTHER STATION _____ STATION _____
ZONE _____ ELEVATION _____ NORTHINGS (Y) _____ EASTINGS (X) _____

SKETCH: (Include reference tie or witness points, remarks and topo of area)

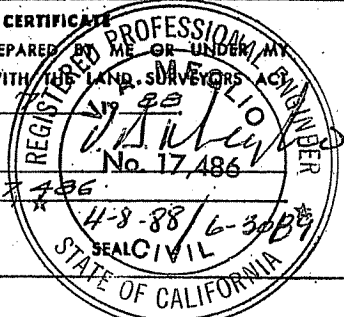


SURVEYOR'S CERTIFICATE

THIS CORNER RECORD WAS PREPARED BY ME OR UNDER MY DIRECTION IN CONFORMANCE WITH THE LAND SURVEYORS ACT ON APRIL 1988

SIGNED: _____

I. S. or R.C.E. No.: RCE 17,486



COUNTY SURVEYOR'S CERTIFICATE

THIS CORNER RECORD WAS RECEIVED AND EXAMINED AND FILED APRIL 19 1988
C 30212 Exp. 3-31-92 DOCUMENT No. _____

STATEMENT ON BACK OF SHEET

YES NO

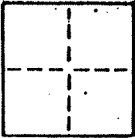
CORNER RECORD

SHEET 2 OF 5

COUNTY OF _____ T. _____ R. _____ MERIDIAN CALIFORNIA

CORNER TYPE: GOV'T. CORNER MEANDER RANCHO CONTROL OTHER

CORNER IDENTIFICATION — DATE OF VISIT February 25 1988



CORNER — LEFT AS FOUND FOUND AND TAGGED REESTABLISHED OBLITERATED CORNER REBUILT

PHYSICAL DESCRIPTION OF CORNER FOUND, EVIDENCE AND METHOD USED TO IDENTIFY OR REESTABLISH

Found 3/4" iron pipe monuments as shown on Book 22 of Parcel Maps Page 22,

Marin County Records

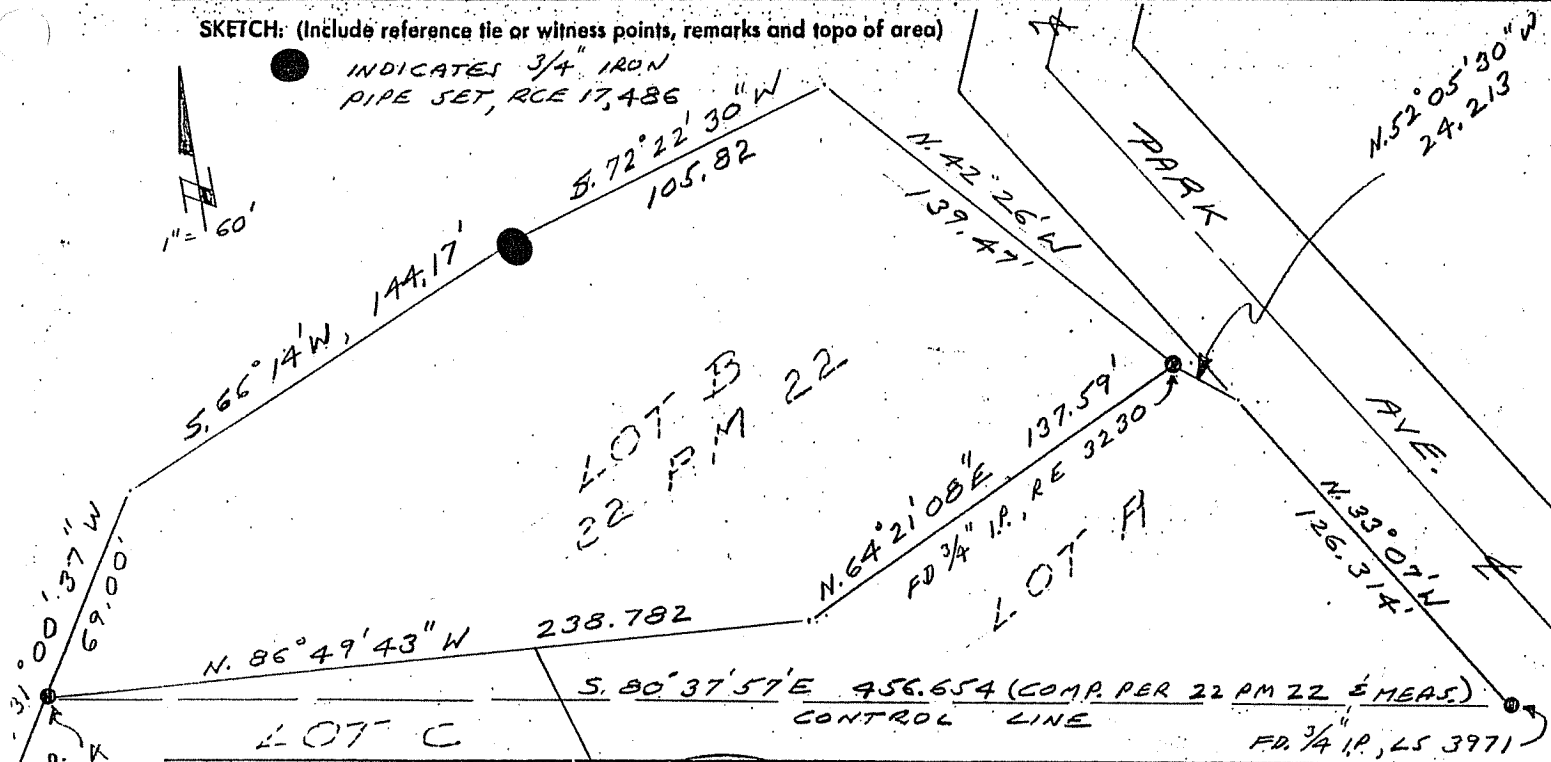
A. P. No. 15-231-19

PHYSICAL DESCRIPTION OF MONUMENTS REBUILT OR PERPETUATED

Set 3/4" iron pipe tagged RCE 17,486 as indicated

CALIFORNIA COORDINATE SYSTEM ORDER: FIRST SECOND THIRD
 STATIONS USED: NG'S (USC & GS) STATE COUNTY OTHER STATION _____ STATION _____
 ZONE _____ ELEVATION _____ NORTHINGS (Y) _____ EASTINGS (X) _____

SKETCH: (Include reference tie or witness points, remarks and topo of area)

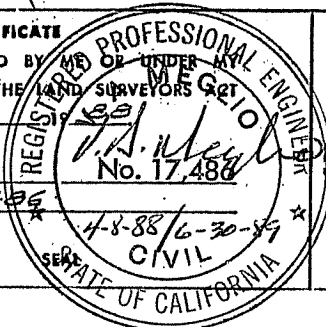


SURVEYOR'S CERTIFICATE

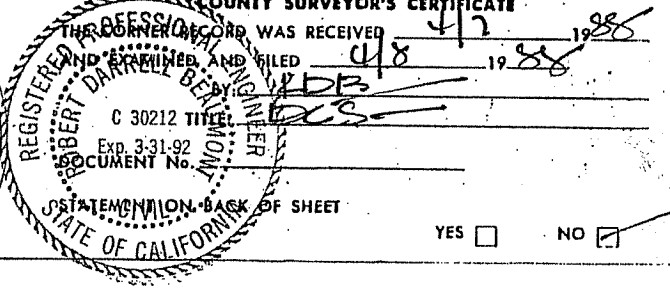
THIS CORNER RECORD WAS PREPARED BY ME OR UNDER MY DIRECTION IN CONFORMANCE WITH THE LAND SURVEYORS ACT ON APRIL 7 1988

SIGNED: _____

L.S. or R.C.E. No.: REE 17,486



COUNTY SURVEYOR'S CERTIFICATE



YES NO

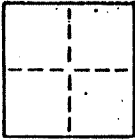
CORNER RECORD

SHEET 3 OF 5

COUNTY OF _____ T. _____ R. _____ MERIDIAN CALIFORNIA

CORNER TYPE: GOVT. CORNER MEANDER RANCHO CONTROL OTHER

CORNER IDENTIFICATION — DATE OF VISIT February 25 1988



CORNER — LEFT AS FOUND FOUND AND TAGGED REESTABLISHED OBLITERATED CORNER REBUILT

PHYSICAL DESCRIPTION OF CORNER FOUND, EVIDENCE AND METHOD USED TO IDENTIFY OR REESTABLISH

Found 3/4" iron pipe monuments as shown on Book 22 of Parcel Maps Page 22,

Marin County Records

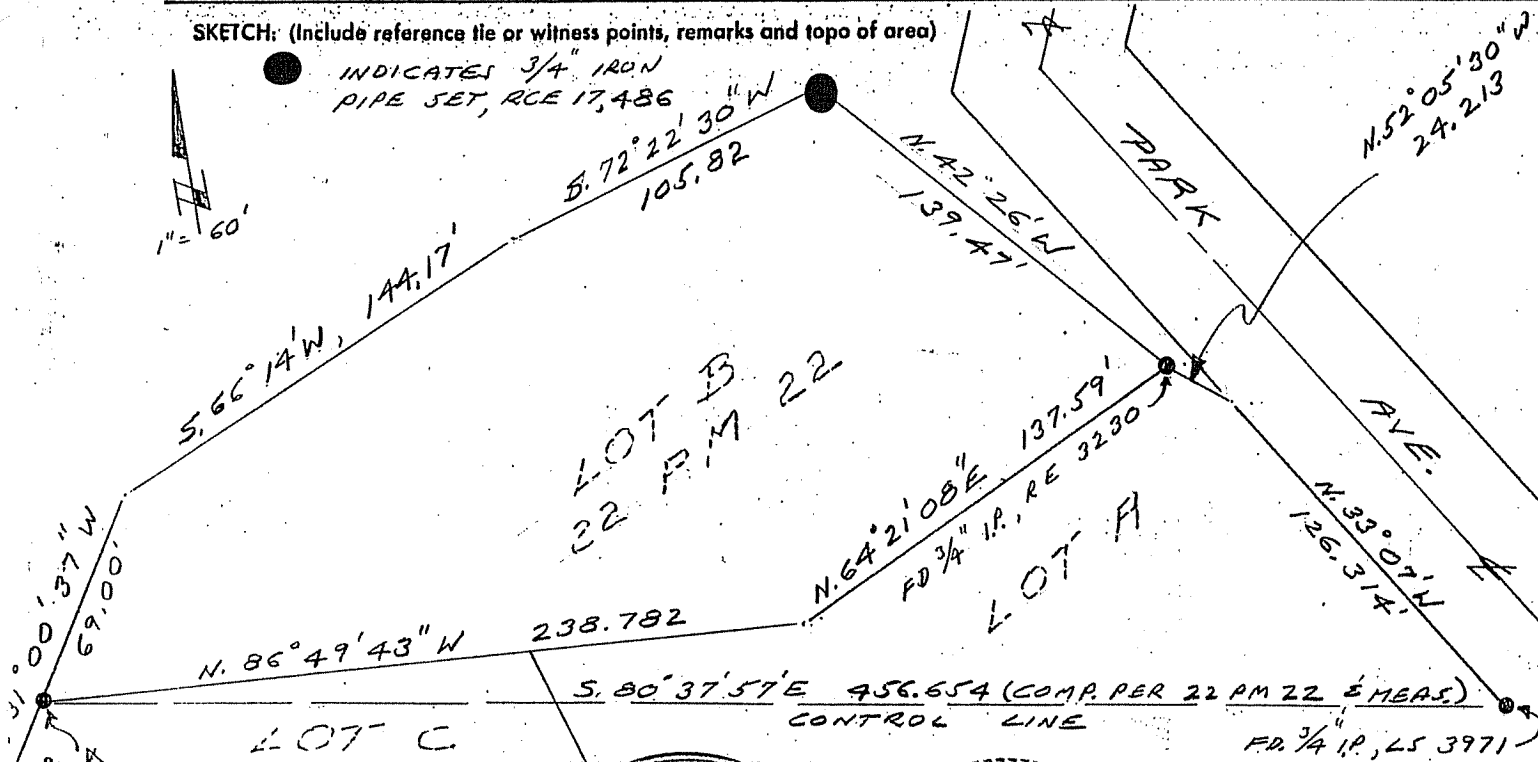
A. P. No. 15-231-19

PHYSICAL DESCRIPTION OF MONUMENTS, REBUILT OR PERPETUATED

Set 3/4" iron pipe tagged RCE 17,486 as indicated

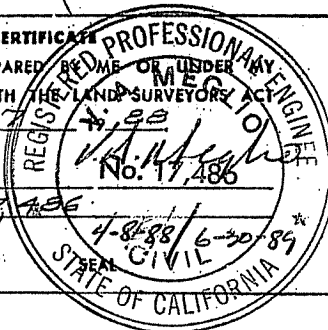
CALIFORNIA COORDINATE SYSTEM ORDER: FIRST SECOND THIRD
 STATIONS USED: NG5 (USC & GS) STATE COUNTY OTHER STATION _____ STATION _____
 ZONE _____ ELEVATION _____ NORTHINGS (Y) _____ EASTINGS (X) _____

SKETCH: (Include reference tie or witness points, remarks and topo of area)



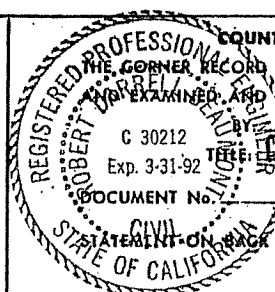
SURVEYOR'S CERTIFICATE

THIS CORNER RECORD WAS PREPARED BY ME OR UNDER
 DIRECTION IN CONFORMANCE WITH THE LAND SURVEYORS ACT
 ON APRIL 7 1988
 SIGNED: [Signature]
 L.S. or R.C.E. No.: REE 17,486



COUNTY SURVEYOR'S CERTIFICATE

THIS CORNER RECORD WAS RECEIVED 4/7 1988
 AND EXAMINED AND FILED 4/8 1988
 REGISTERED PROFESSIONAL ENGINEER
 ROBERT M. McLEOD
 C 30212
 Exp. 3-31-92
 DOCUMENT No. _____
 STATEMENT ON EACH OF SHEET



YES NO

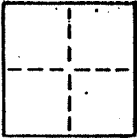
CORNER RECORD

7 SHEET 4 OF 5

COUNTY OF _____ T. _____ R. _____ MERIDIAN CALIFORNIA

CORNER TYPE: GOVT. CORNER MEANDER RANCHO CONTROL OTHER

CORNER IDENTIFICATION — DATE OF VISIT February 25 19 88



CORNER — LEFT AS FOUND FOUND AND TAGGED REESTABLISHED OBLITERATED CORNER REBUILT

PHYSICAL DESCRIPTION OF CORNER FOUND; EVIDENCE AND METHOD USED TO IDENTIFY OR REESTABLISH

Found 3/4" iron pipe monuments as shown on Book 22 of Parcel Maps Page 22,

Marin County Records

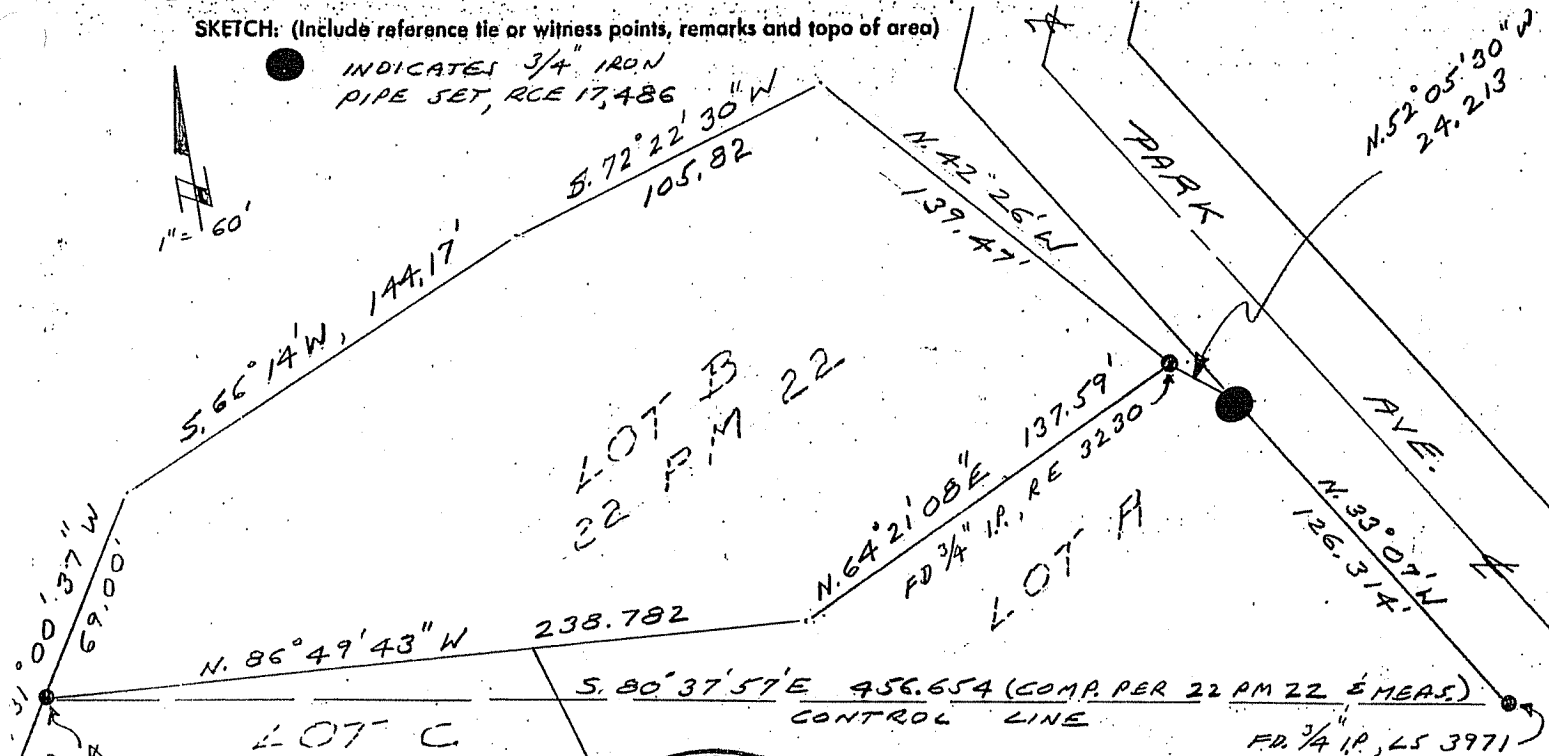
A. P. No. 15-231-19

PHYSICAL DESCRIPTION OF MONUMENTS REBUILT OR PERPETUATED

Set 3/4" iron pipe tagged RCE 17,486 as indicated

CALIFORNIA COORDINATE SYSTEM ORDER: FIRST SECOND THIRD
 STATIONS USED: NG5 (USC & GS) STATE COUNTY OTHER STATION _____ STATION _____
 ZONE _____ ELEVATION _____ NORTHINGS (Y) _____ EASTINGS (X) _____

SKETCH: (Include reference tie or witness points, remarks and topo of area)



SURVEYOR'S CERTIFICATE
 THIS CORNER RECORD WAS PREPARED BY ME OR UNDER MY SUPERVISION IN CONFORMANCE WITH THE LAND SURVEYORS ACT ON APRIL 7 1988
 SIGNED: V. H. Meghoo
 I.S. or R.C.E. No.: REE 17,486
 REGISTERED PROFESSIONAL ENGINEER
 No. 17,486
 4-8-88/6-30-89
 CIVIL
 STATE OF CALIFORNIA

COUNTY SURVEYOR'S CERTIFICATE
 THE CORNER RECORD WAS RECEIVED BY ME AND EXAMINED AND FILED APRIL 7 1988
 TITLE: REE 17,486
 REGISTERED PROFESSIONAL ENGINEER
 STATE OF CALIFORNIA
 YES NO

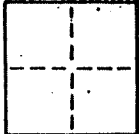
CORNER RECORD

SHEET 5 OF 5

COUNTY OF _____ T. _____ R. _____ MERIDIAN _____ CALIFORNIA

CORNER TYPE: GOVT. CORNER MEANDER RANCHO CONTROL OTHER

CORNER IDENTIFICATION — DATE OF VISIT February 25 1988



CORNER — LEFT AS FOUND FOUND AND TAGGED REESTABLISHED OBLITERATED CORNER REBUILT

PHYSICAL DESCRIPTION OF CORNER FOUND, EVIDENCE AND METHOD USED TO IDENTIFY OR REESTABLISH

Found 3/4" iron pipe monuments as shown on Book 22 of Parcel Maps Page 22,

Marin County Records

A. P. No. 15-231-19

PHYSICAL DESCRIPTION OF MONUMENTS REBUILT OR PERPETUATED

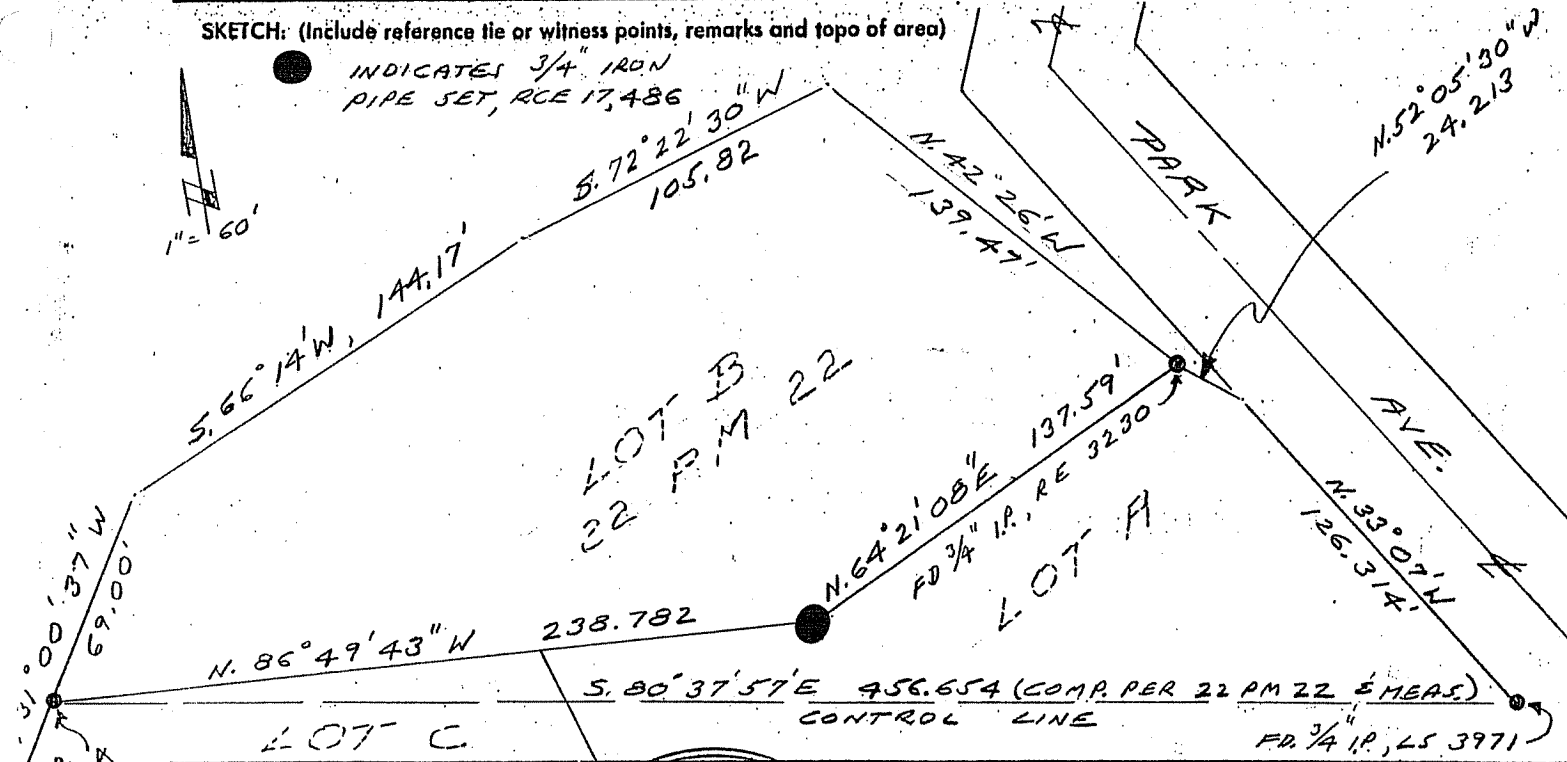
Set 3/4" iron pipe tagged RCE 17,486 as indicated

CALIFORNIA COORDINATE SYSTEM ORDER: FIRST SECOND THIRD

STATIONS USED: NGS (USC & GS) STATE COUNTY OTHER STATION _____

ZONE _____ ELEVATION _____ NORTHINGS (Y) _____ EASTINGS (X) _____

SKETCH: (Include reference tie or witness points, remarks and topo of area)

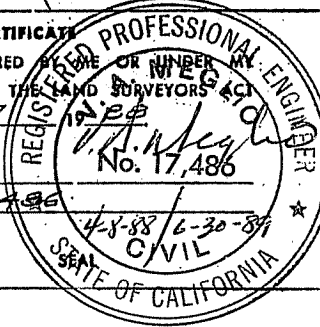


SURVEYOR'S CERTIFICATE

THIS CORNER RECORD WAS PREPARED BY ME OR UNDER MY DIRECTION IN CONFORMANCE WITH THE LAND SURVEYORS ACT ON APRIL 7 1988

SIGNED: REE 17,486

L.S. or R.C.E. No.: REE 17,486



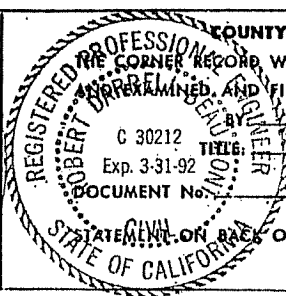
COUNTY SURVEYOR'S CERTIFICATE

THE CORNER RECORD WAS RECEIVED AND EXAMINED, AND FILED 4/8 1988

BY: DC. SWAN

C 30212 Exp. 3-31-92

DOCUMENT No. _____



YES NO