

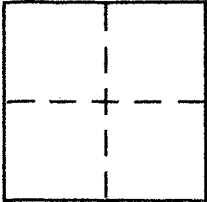
**CORNER RECORD**

Document Number APN 15-231-13

City of San Rafael

County of MARIN, California

Brief Legal Description AP 15-231-13 / 161 Deer Park Avenue 18 ROS 16



**CORNER TYPE**

Government Corner  Control   
Meander  Property   
Rancho  Other   
Date of Survey \_\_\_\_\_

**COORDINATES (Optional)**

N. \_\_\_\_\_  
E. \_\_\_\_\_  
Zone \_\_\_\_\_ NAD27  NAD83   
NAD83 Epoch \_\_\_\_\_  
Elev. \_\_\_\_\_  
Vert. Datum: NGVD29  NAVD88   
Meas. Units: Metric  Imperial

Corner - Left as found  Found and tagged  Established  Reestablished  Rebuilt

Identification and type of corner found: Evidence used to identify or procedure used to establish or reestablish the corner:

See Back

A description of the physical condition of the monument as found and as set or reset:

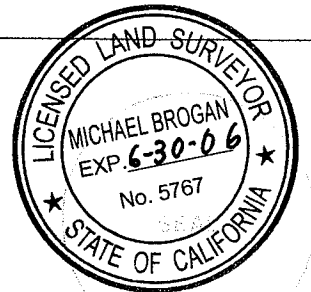
See Back

**SURVEYOR'S STATEMENT**

This Corner Record was prepared by me or under my direction in conformance with

the Land Surveyor's Act on August 9 2005

Signed Michael A Brogan P.L.S or R.C.E. No. LS 5767



**COUNTY SURVEYOR'S STATEMENT**

This Corner Record was received: AUGUST 15, 2005

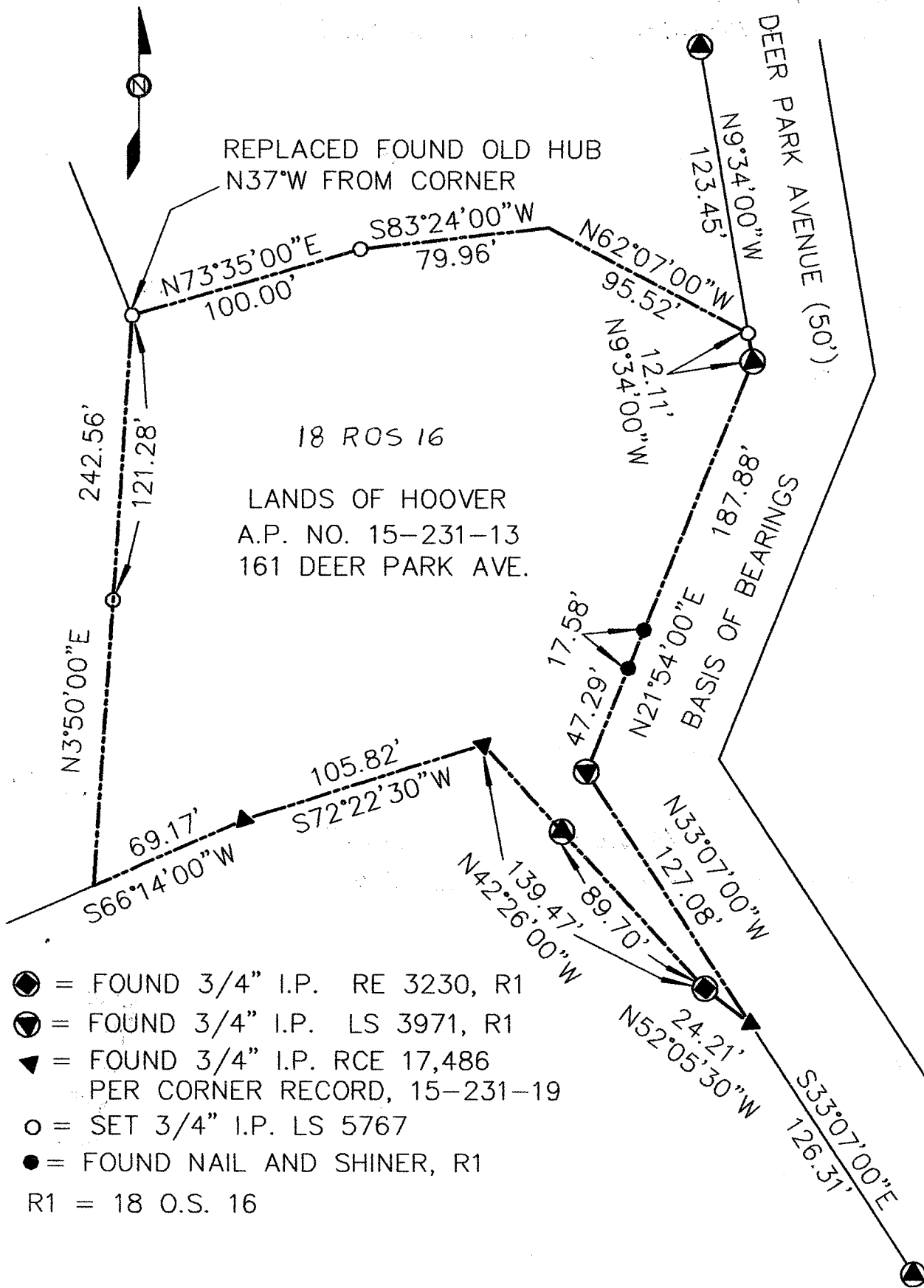
and examined and filed SEPTEMBER 15, 2005

Signed \_\_\_\_\_ P.L.S or R.C.E. No. 7128

Title COUNTY SURVEYOR



County Surveyor's Comment \_\_\_\_\_



N37°W FROM CORNER

N73°35'00"E 100.00'

S83°24'00"W 79.96'

N62°07'00"W 95.52'

N9°34'00"W 123.45'

N9°34'00"W 12.11'

N9°34'00"W 187.88'

N21°54'00"E 17.58'

N21°54'00"E 47.29'

N33°07'00"W 127.08'

N33°07'00"W 126.31'

S33°07'00"E 126.31'

N52°05'30"W 24.21'

N42°26'00"W 139.47'

N42°26'00"W 89.70'

S72°22'30"W 105.82'

S66°14'00"W 69.17'

N3°50'00"E 242.56'

N3°50'00"E 121.28'