

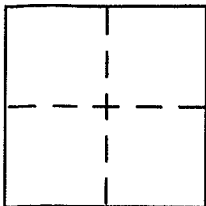
**CORNER RECORD**

City of SAN RAFAEL

Document Number APN: 015-231-11

County of MARIN, California

Brief Legal Description APN: 015-231-11



**CORNER TYPE**

Government Corner  Control   
Meander  Property   
Rancho  Other   
Date of Survey July 26, 2005

**COORDINATES (Optional)**

N. \_\_\_\_\_  
E. \_\_\_\_\_  
Zone \_\_\_\_\_ NAD27  NAD83   
NAD83 Epoch \_\_\_\_\_  
Elev. \_\_\_\_\_  
Vert. Datum: NGVD29  NAVD88   
Meas. Units: Metric  Imperial

Corner - Left as found  Found and tagged  Established  Reestablished  Rebuilt

Identification and type of corner found: Evidence used to identify or procedure used to establish or reestablish the corner:

SEE PAGE 2 OF 2

A description of the physical condition of the monument as found and as set or reset:

SEE PAGE 2 OF 2

**SURVEYOR'S STATEMENT**

This Corner Record was prepared by me or under my direction in conformance with the Land Surveyor's Act on July 29<sup>th</sup> 2005

Signed [Signature] P.L.S or R.C.E. No. 6784

**COUNTY SURVEYOR'S STATEMENT**

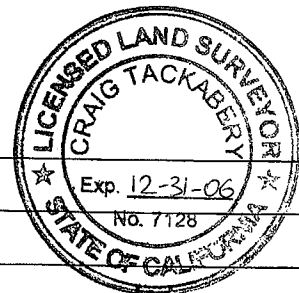
This Corner Record was received AUGUST 26, 2005

and examined and filed SEPTEMBER 16, 2005

Signed [Signature] P.L.S or R.C.E. No. 7128

Title COUNTY SURVEYOR

County Surveyor's Comment \_\_\_\_\_



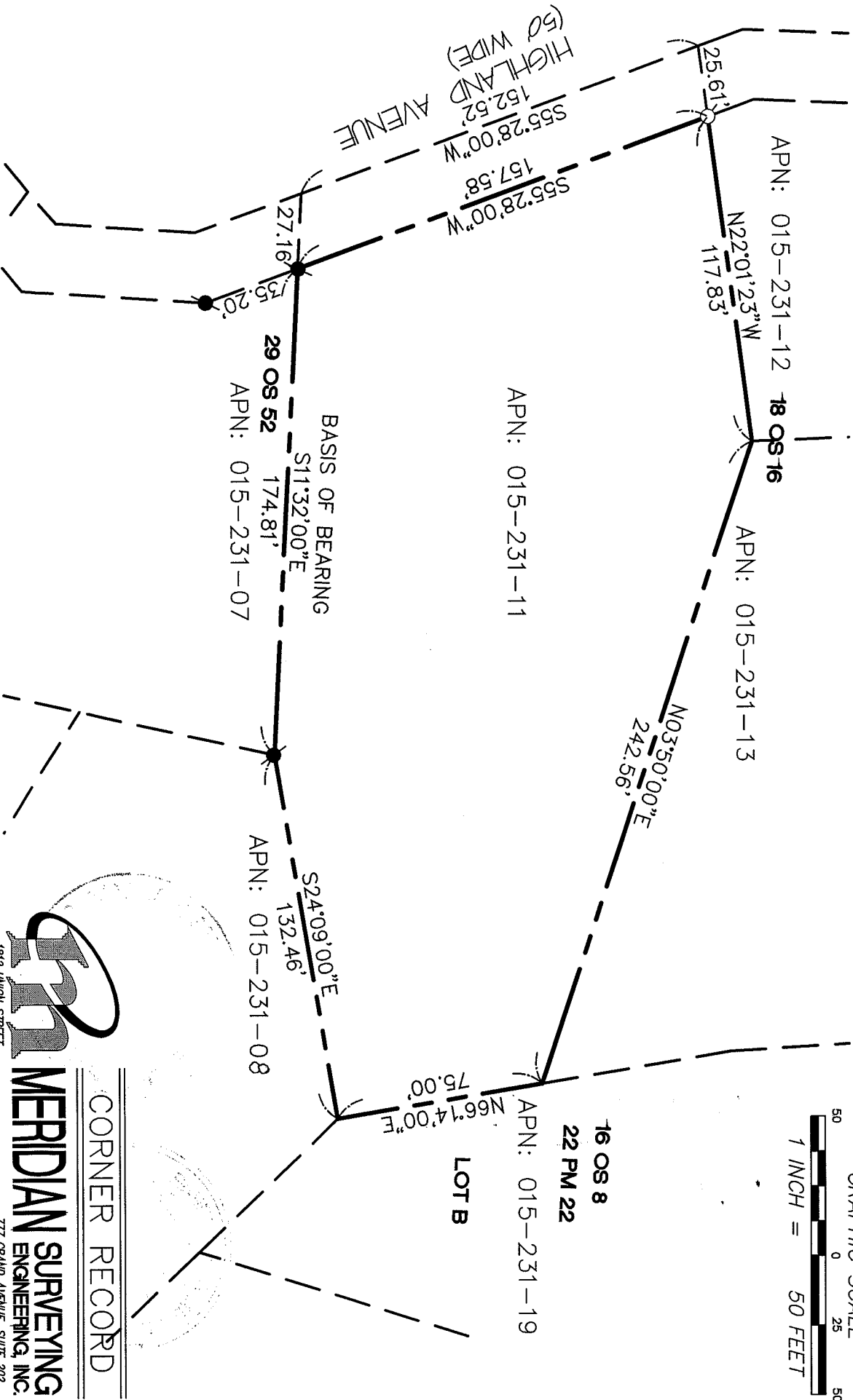
**LEGEND**

- FOUND 3/4" IP WITH PLUG,  
LS 3971
- SET 5/8" REBAR WITH  
CAP, PLS 6784

NOTE  
RECORD=MEASURED

**REFERENCE**

"RECORD OF SURVEY, LANDS OF  
LAMB..., SAN RAFAEL, CALIFORNIA"  
FILED FOR RECORD 11 OCTOBER 1991  
IN BOOK 29 OF SURVEYS, AT PAGE  
52, MARIN COUNTY RECORDS.



**Meridian Surveying Engineering, Inc.**  
 1812 UNION STREET  
 SAN FRANCISCO, CA 94123  
 (415) 440-4131

**Meridian Surveying Engineering, Inc.**  
 777 GRAND AVENUE, SUITE 202  
 SAN RAFAEL, CA 94901  
 (415) 486-6460

05065  
 info@meridiansurvey.com